

CHAPTER 4

Inserting and Testing Defined Trading strategy template Using NeuroShell Day Trader Professional

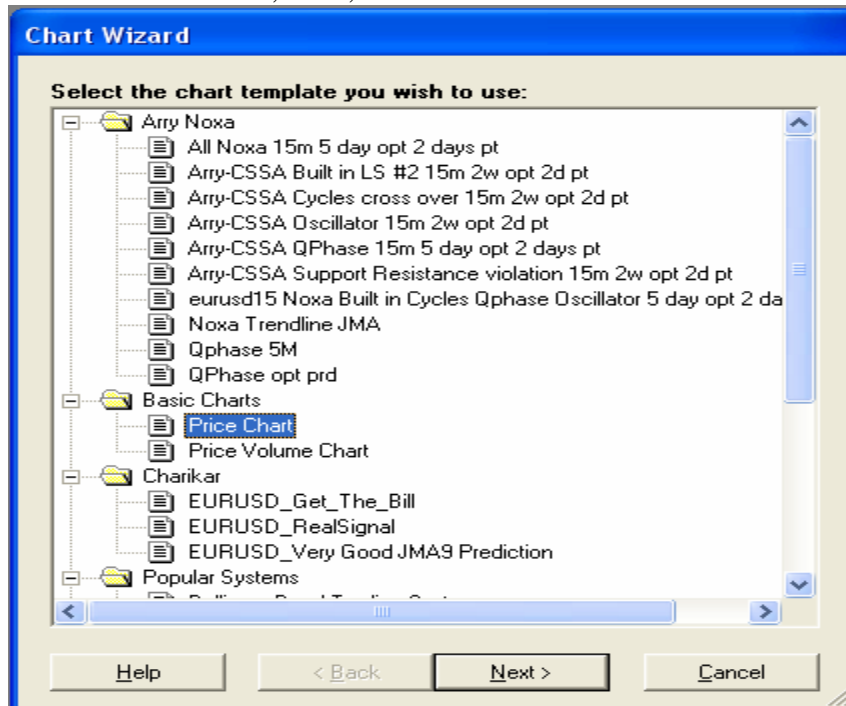
Copyright © Arry Andriana, March 2008

This free e-book is only for educational purpose, any presentation on this material shall not be used as a real trading advice. The owner has no responsibility for any losses of using this e-book. No part of this e-book modified into any format without owner permission.

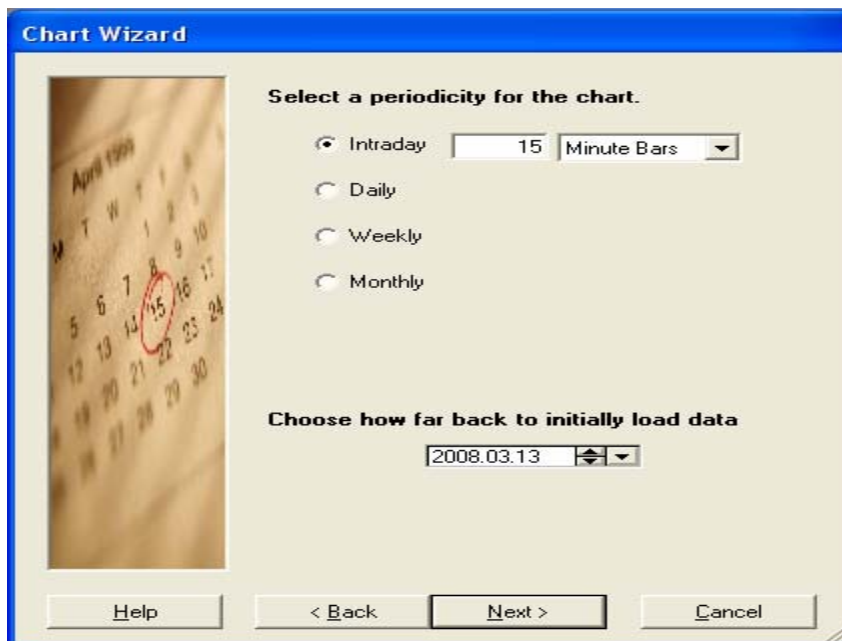
The following procedure used to insert a defined trading strategy which is already available as a template. This template can be created and modified within Neuroshell.

Here we assumed that the chart will be updated using real time data from data vendor, broker data or DDE server.

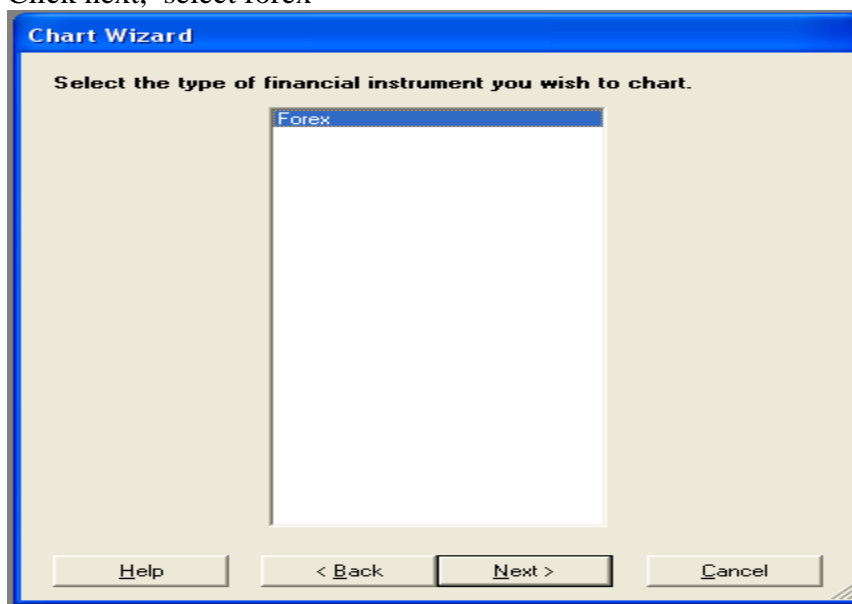
1. Select menu File, New, select Price chart on chart wizard click Next



2. Set Intraday data



Click next, select forex



Click next

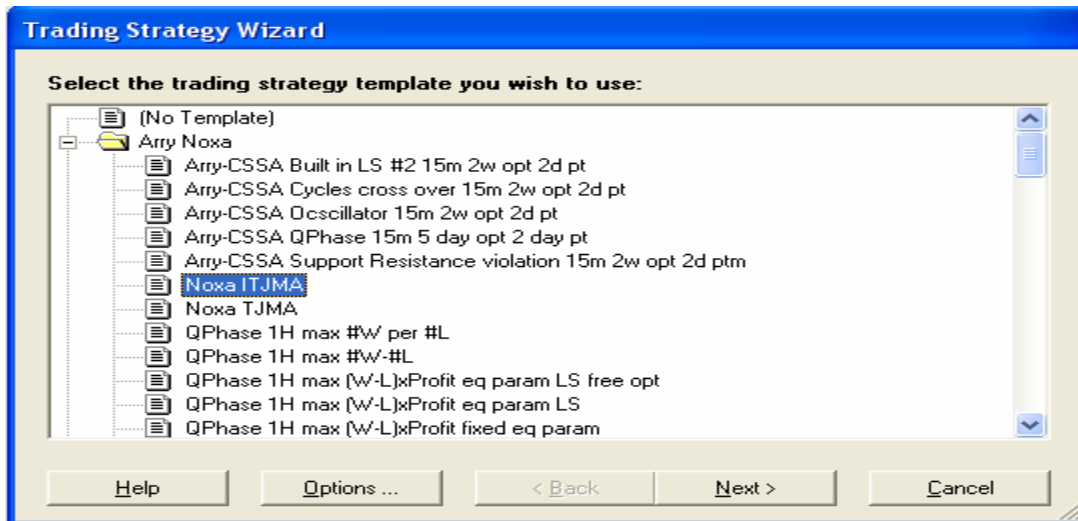
Select the symbol then click Finish.

A new chart will be displayed. If DDE server is activated then the last candle will start with red color (on the last bar) and moving as the actual price.

To be advised the WSG file cleaned out first, especially if the DDE server has been disconnected, otherwise the candle price may jump.

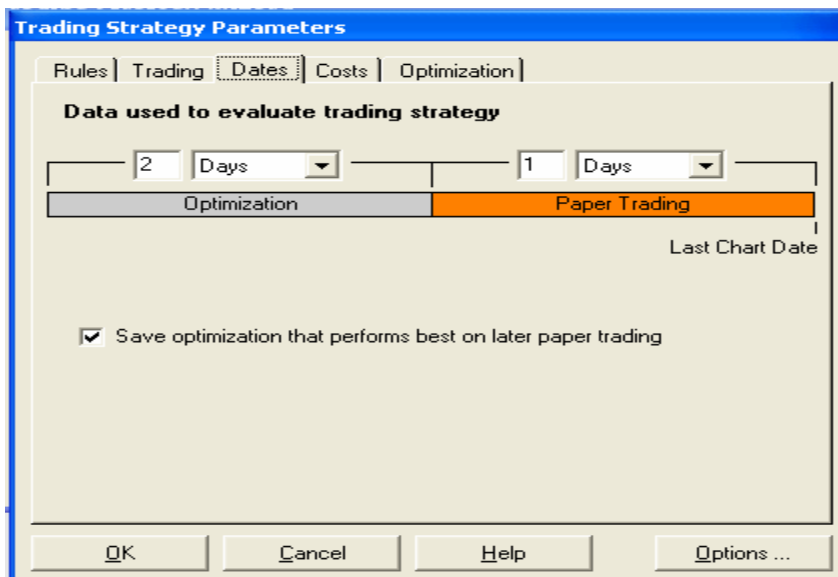
Inserting trading strategy

1. Click Insert, New trading Strategy, Select the strategy wizard want to choose.
2. Example, I inserting here one of my own trading template call "ITJMA".

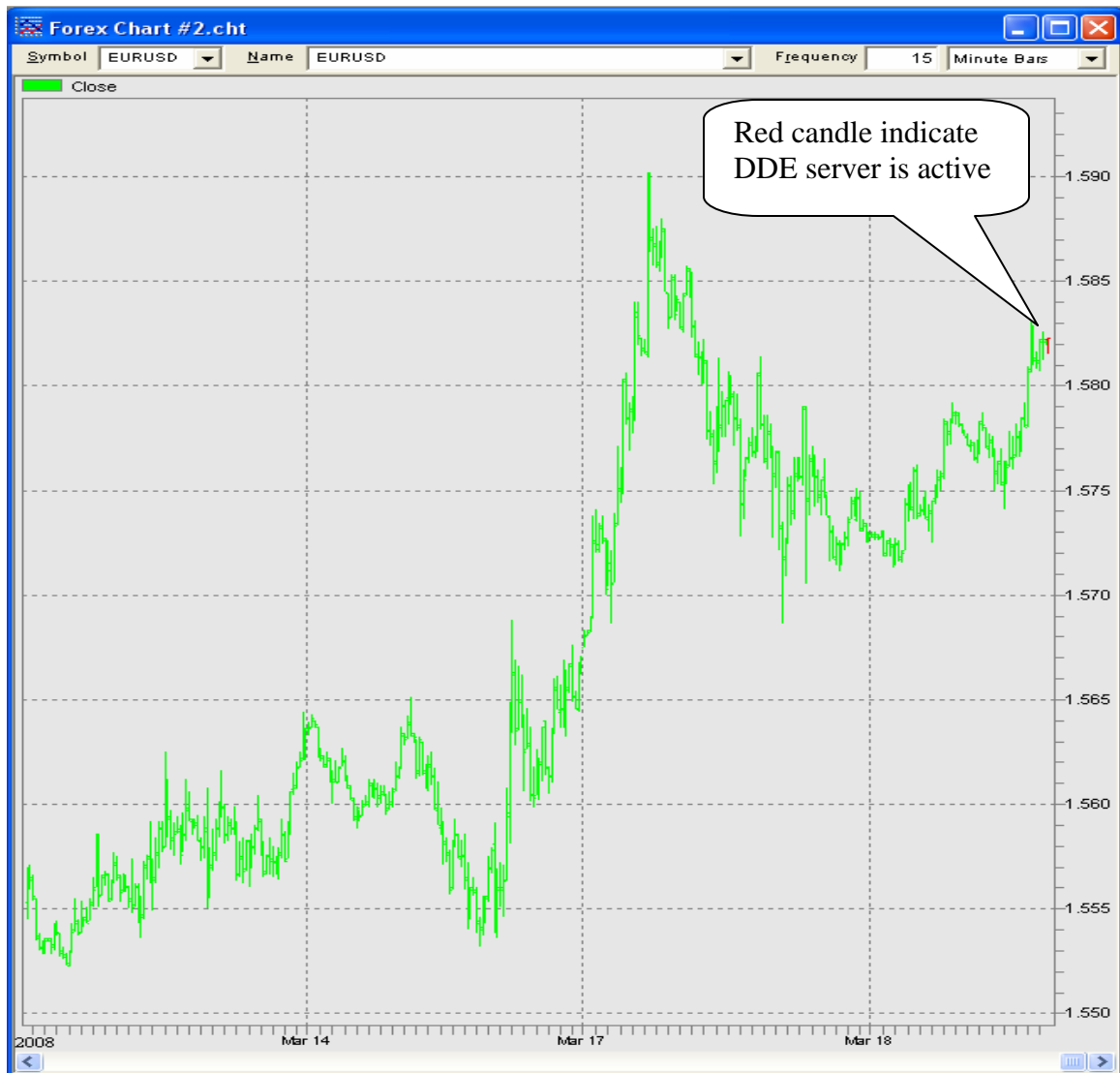


Click Next (assume that the Long/Short entry and exit have been confirmed on the strategy/without additional modifications)

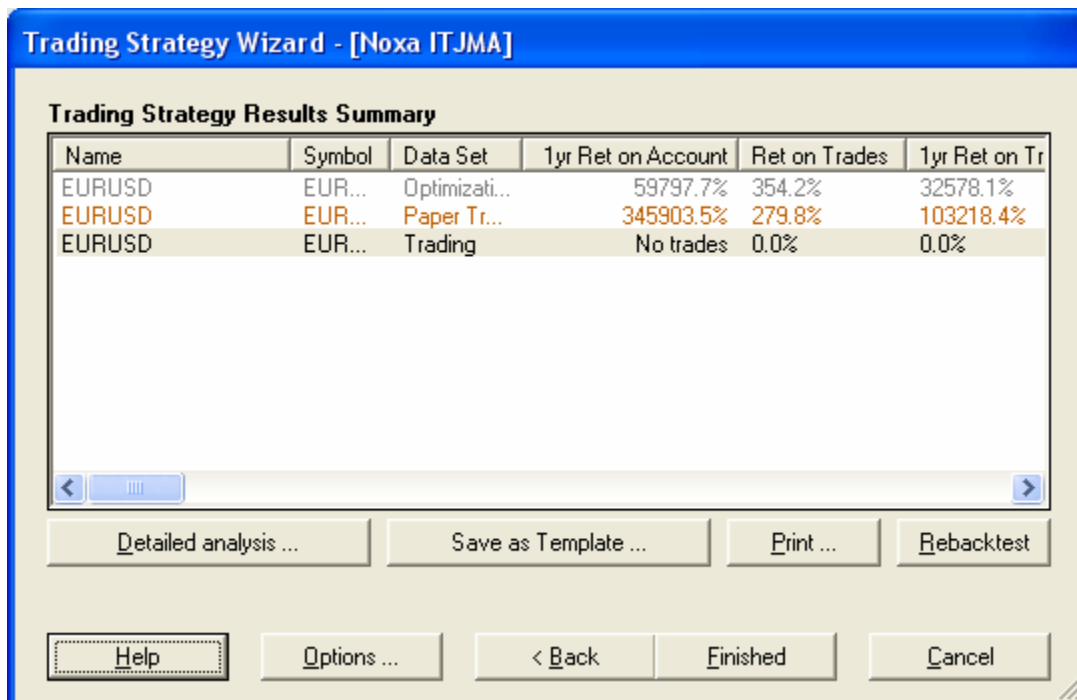
Select Modify Trading strategy to modify the Date if necessary, here is the sample



Click OK after string trading strategy modification completed, click next then Neuroshell will perform training/optimization and paper trade simulation.



Here is the sample after optimization finished



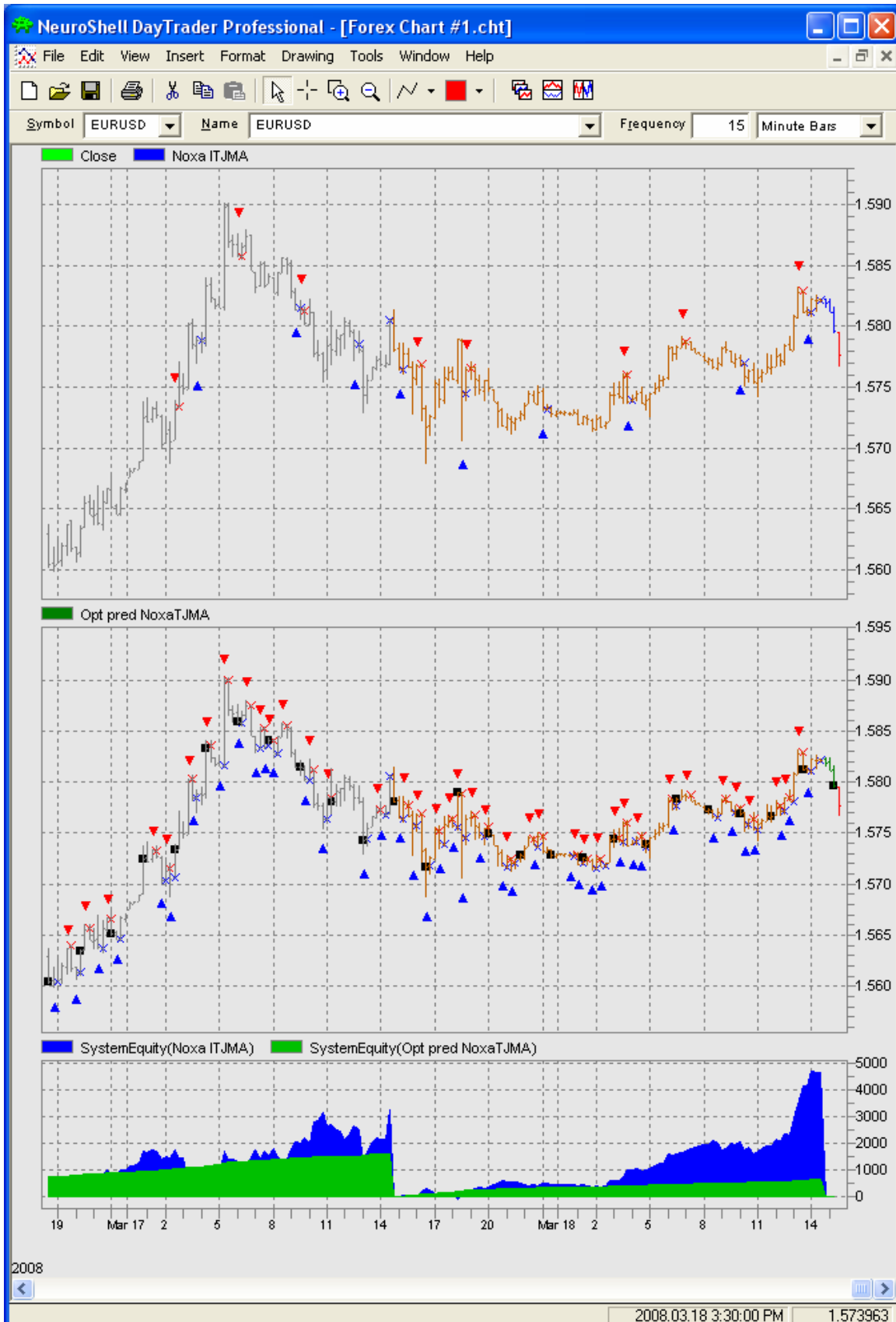
Here we note that there will be no trade defined, let the chart updated by it self. And the chart will display the inserted trading strategy.

After certain period then you can analyze whether your trading strategy is profitable or not, compare winning and loosing trade, return on trade, etc.

Here below is a sample for updated chart, you will see during testing with real data the candle formed as different color. In sample below:

- Green color: the original candle (Close) data.
- Gray color: the training/optimization period.
- Orange color: Paper trading period.
- Blue (on Top chart) or Green (bottom chart) for passed new real time data
- Red for new candle which being formed by new real time data.

Above color will be displayed if the paper trade has been chosen on the Trading Strategy Parameter Dates.



In addition, you can compare also whether your displayed data in the Neuroshell is updated as the DDE server. On below chart, I use MT4 to feed my Neuroshell.

