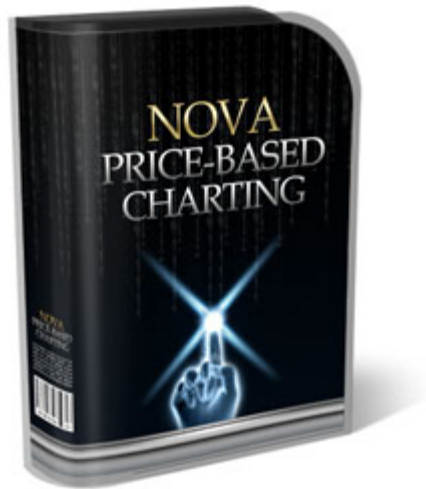


Nova Price Based Charting Software Installation Guide



For additional trading tools & training, go here

[Nova Code Trader](#)

1. Installation with auto-installer

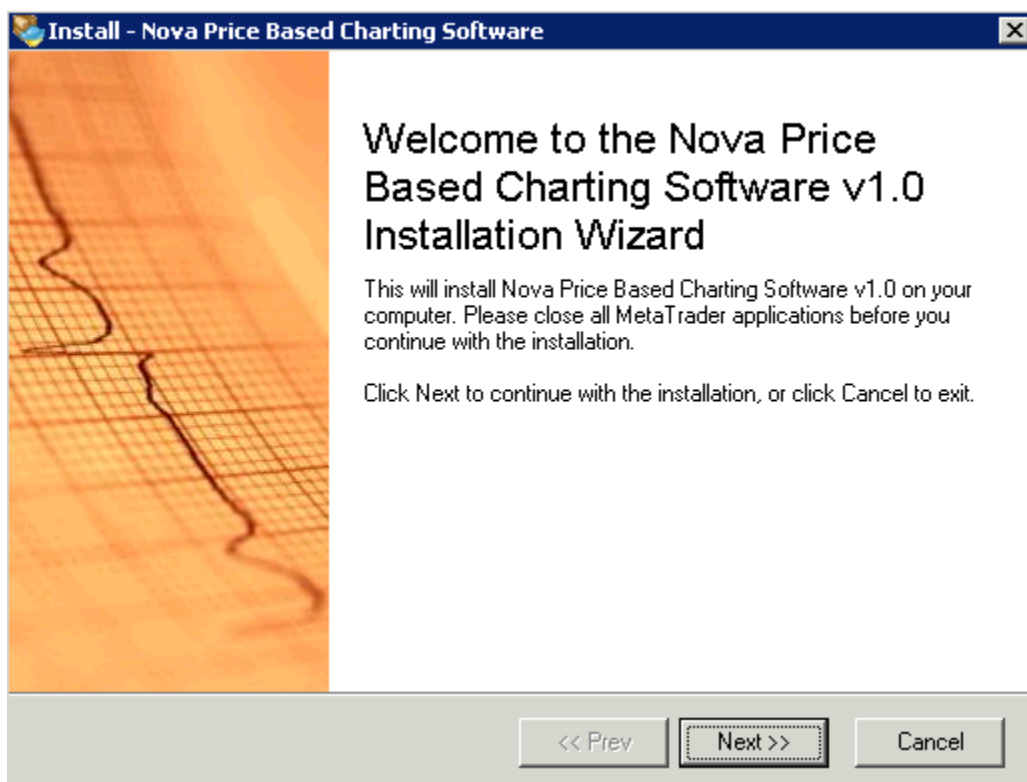
Download the auto-installer **novachart.exe** file from our website and save it on your computer.

Go to the folder where you've saved the downloaded file in the previous step and double click on it to launch the auto installation process.

You need to follow the instruction generated by the installer on your computer screen to complete the process.

Below is what you might see on your screen

Step 1



Just Click Next To Continue

For additional trading tools & training, go here

[Nova Code Trader](#)

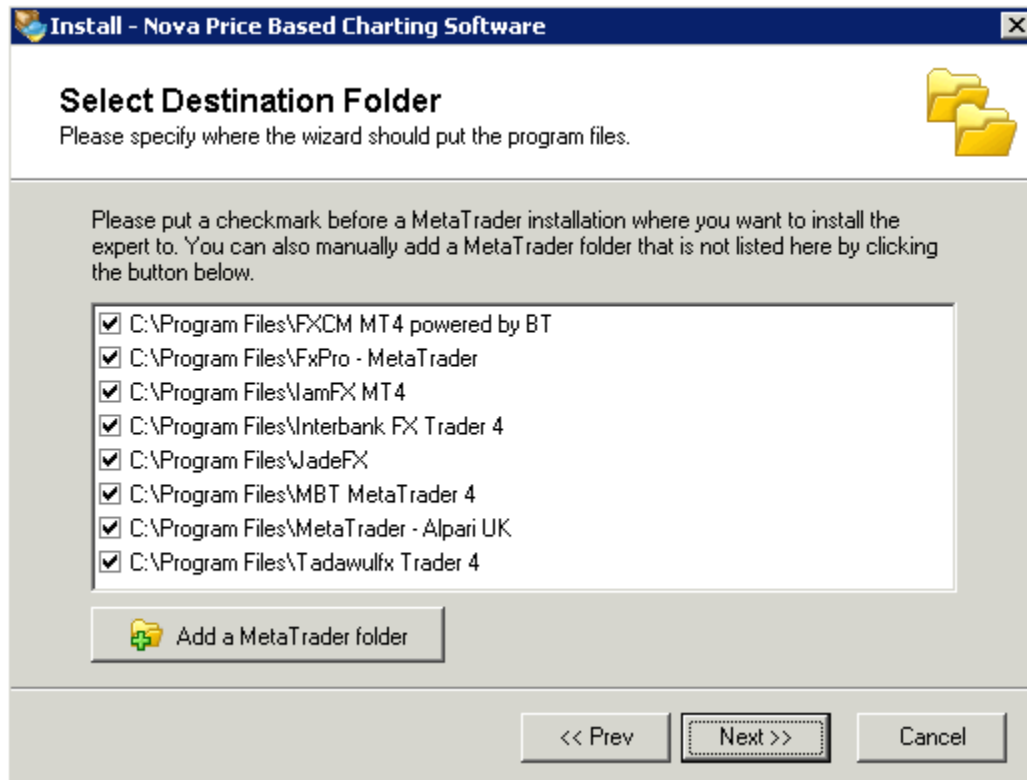
Step 2



Click I accept...and click next to continue

For additional trading tools & training, go here
[Nova Code Trader](#)

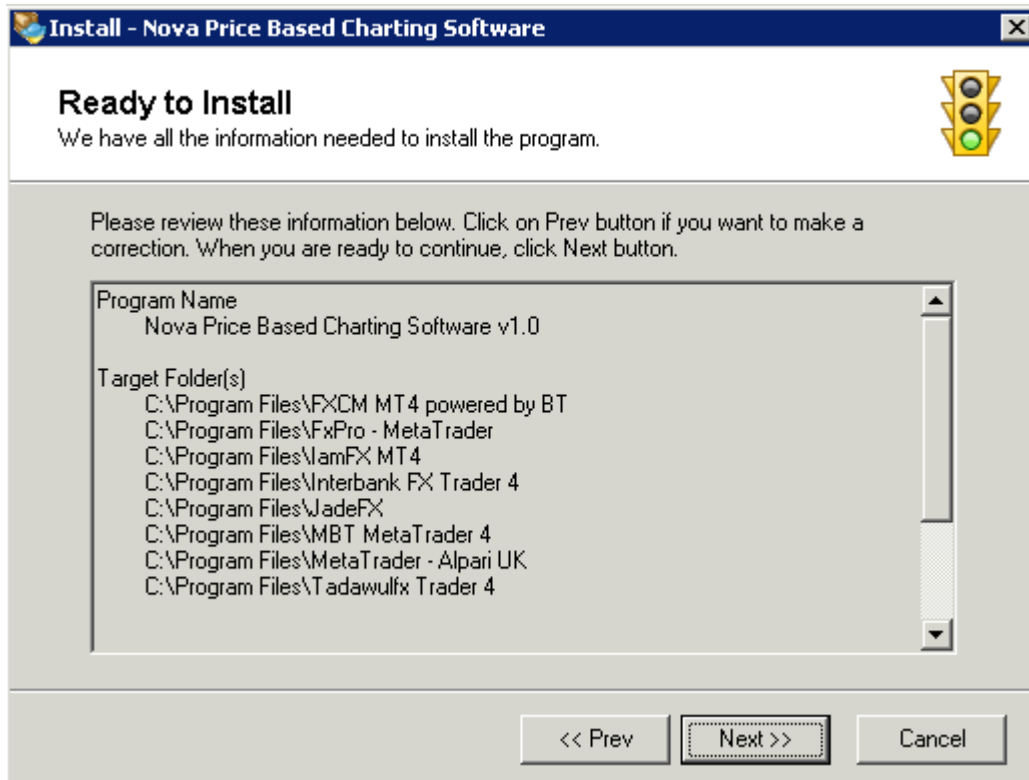
Step 3



The installer will find your Meta Trader 4 location automatically. If it is not listed here, click Add a Meta Trader folder button and point to the folder where your Meta Trader 4 installed on your computer. Then click Next to continue

For additional trading tools & training, go here
[Nova Code Trader](#)

Step 4

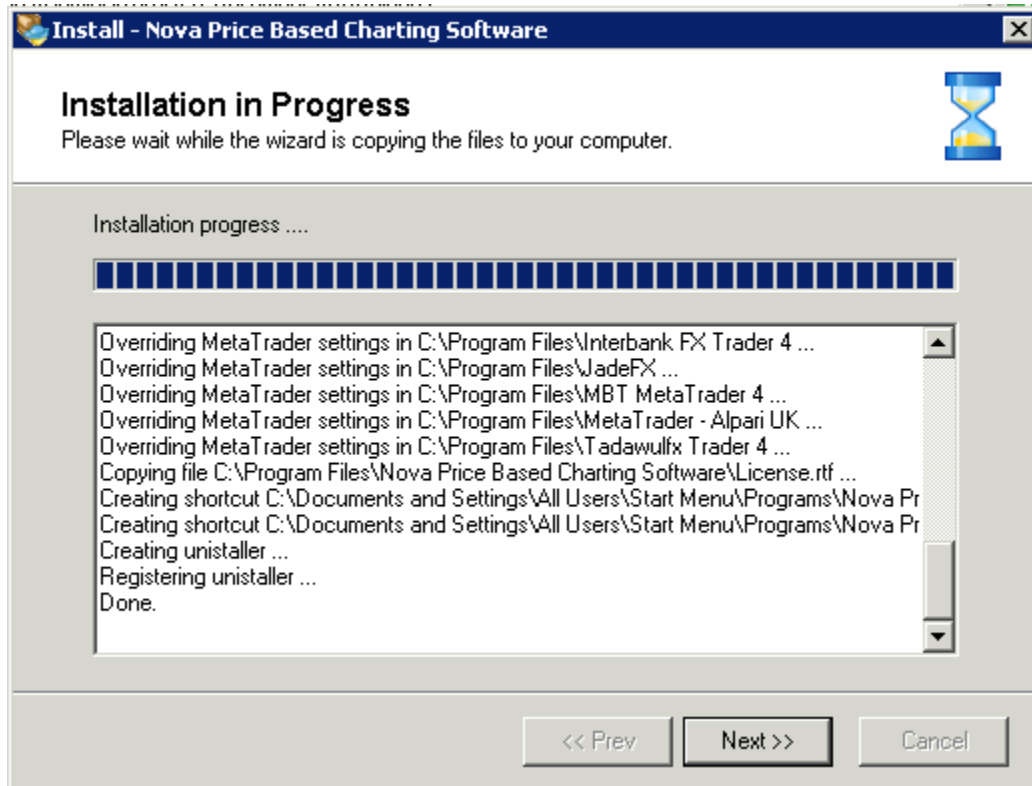


Just click Next to Continue

For additional trading tools & training, go here

[Nova Code Trader](#)

Step 5

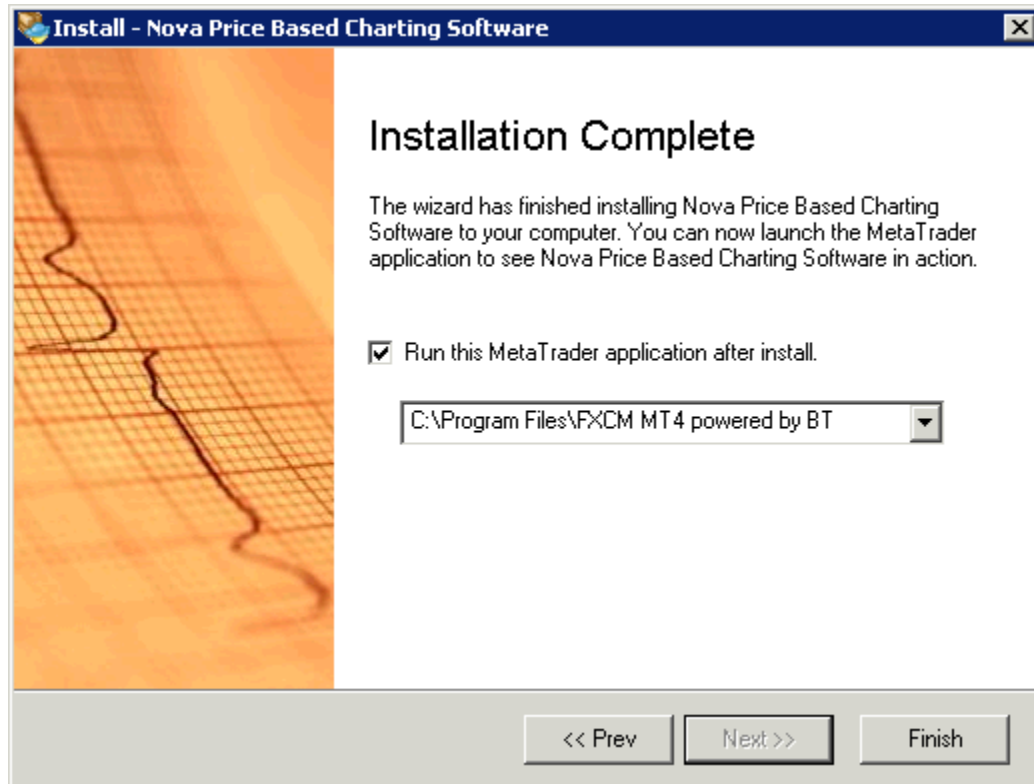


Click Next to Continue

For additional trading tools & training, go here

[Nova Code Trader](#)

Step 6



Click Finish to complete.

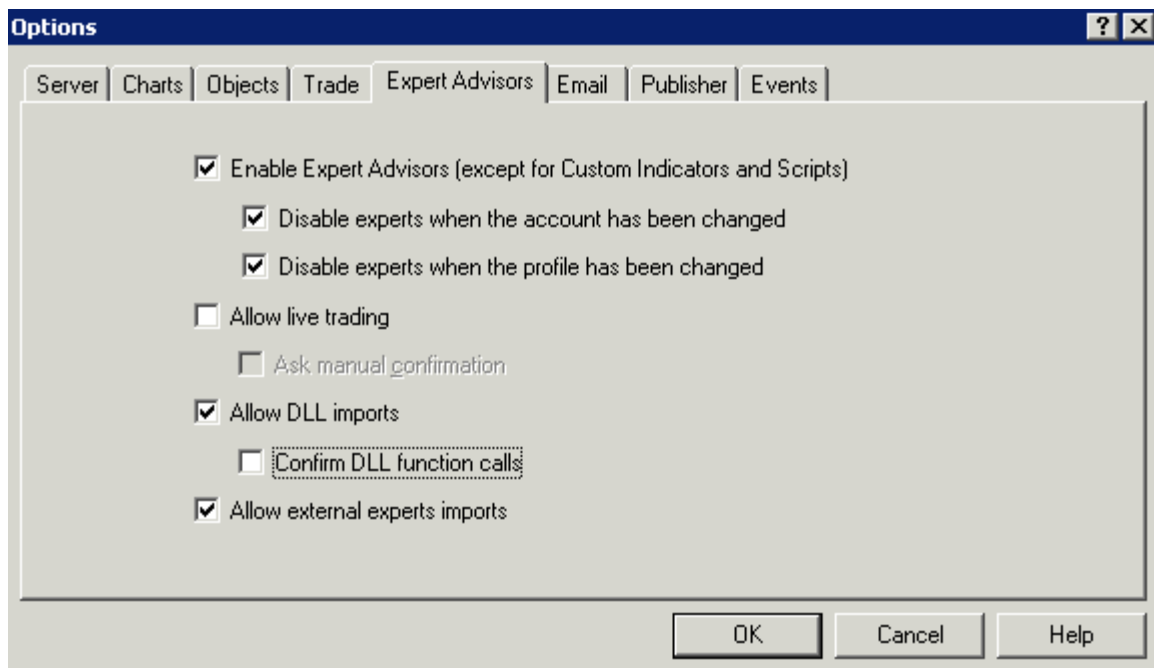
Congrats! Your Nova Range Bar script has been installed!

To use the range bar chart script, make sure that you have allowed for DLL imports: Tools->Options->Expert Advisors 'Allow DLL imports' should be ticked and 'Confirm DLL function calls' unticked.

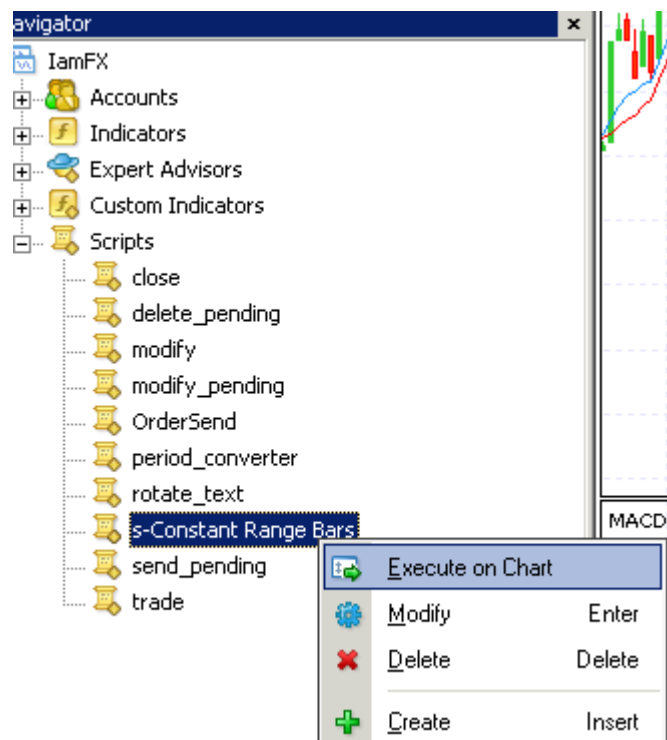
And "Allow external experts imports" ticked.

For additional trading tools & training, go here

[Nova Code Trader](#)

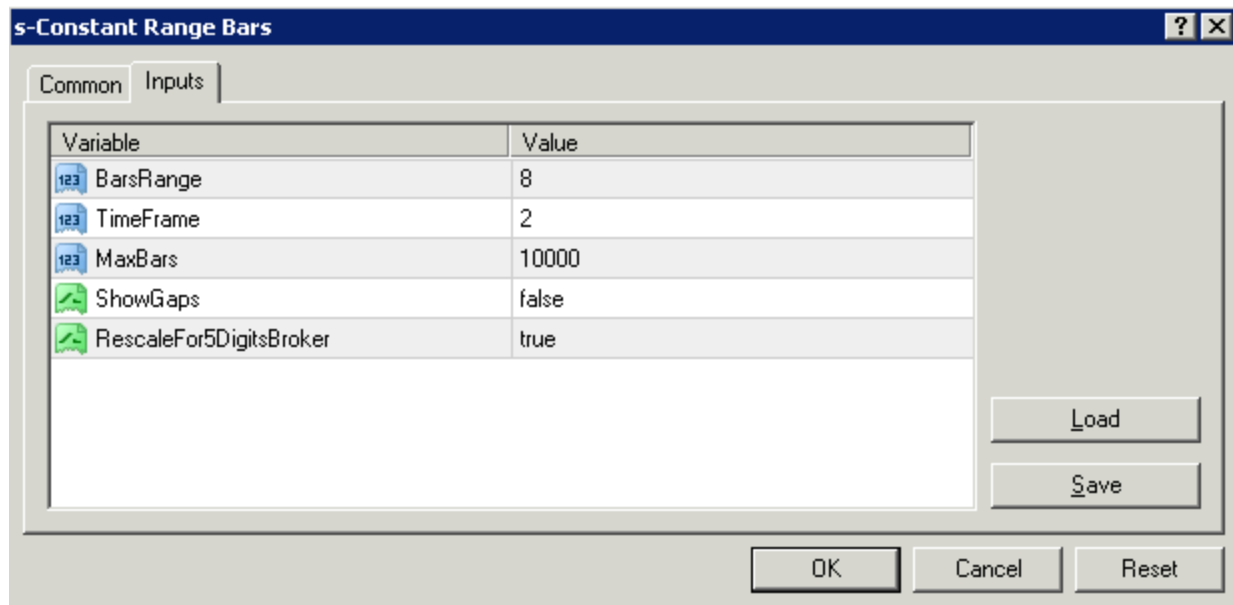


Then from the Navigator Panel, expand the Script node, right click on s-Constant Range Bar and choose Execute on Chart



For additional trading tools & training, go here

[Nova Code Trader](#)

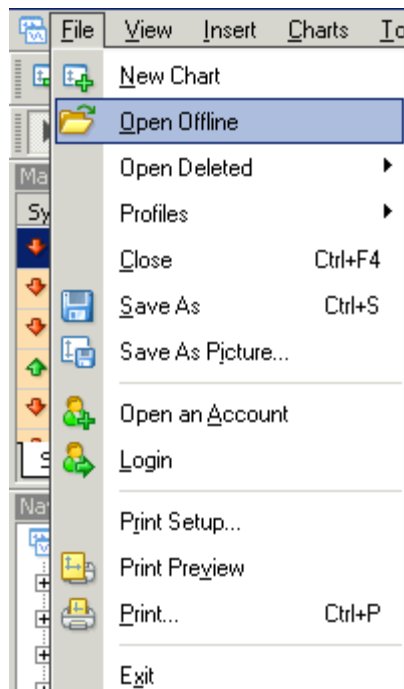


The Inputs:

Bars Range: leave at default or enter the range of the bar you want.

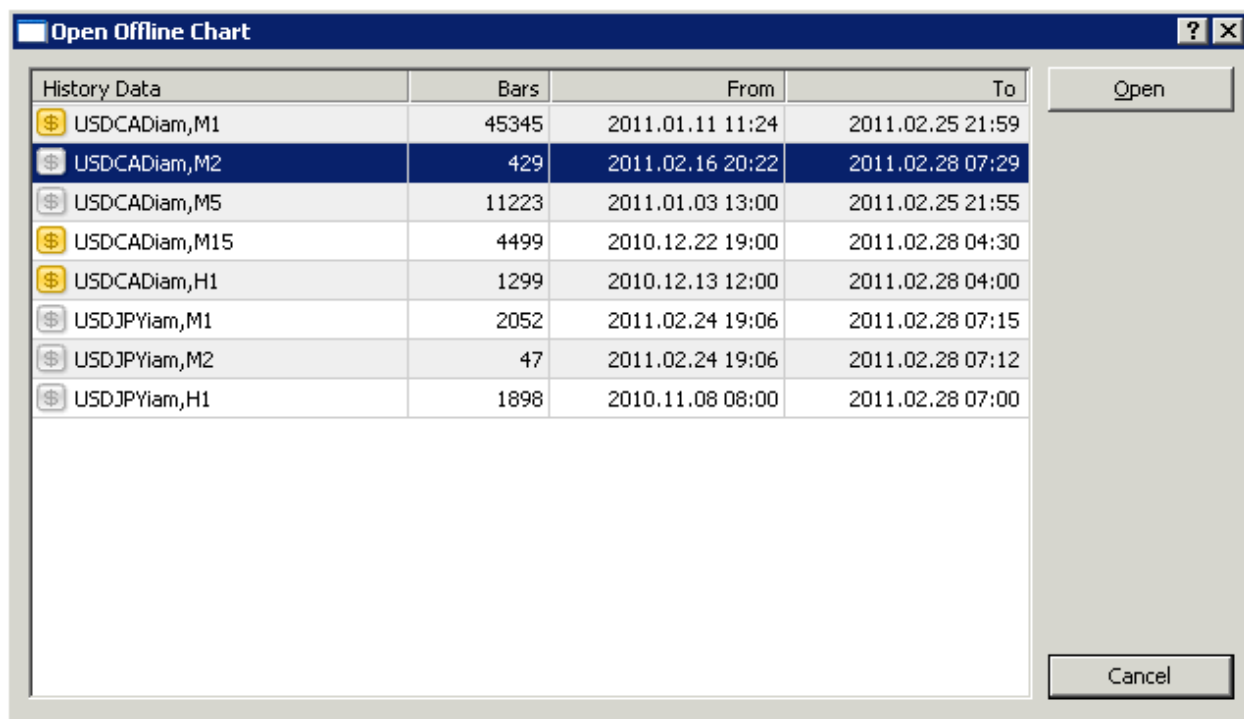
Then go to **File->Open Offline->Symbol,M2** contains desired chart.

(If M2 time frame conflicts with other chart, simply change TimeFrame input)



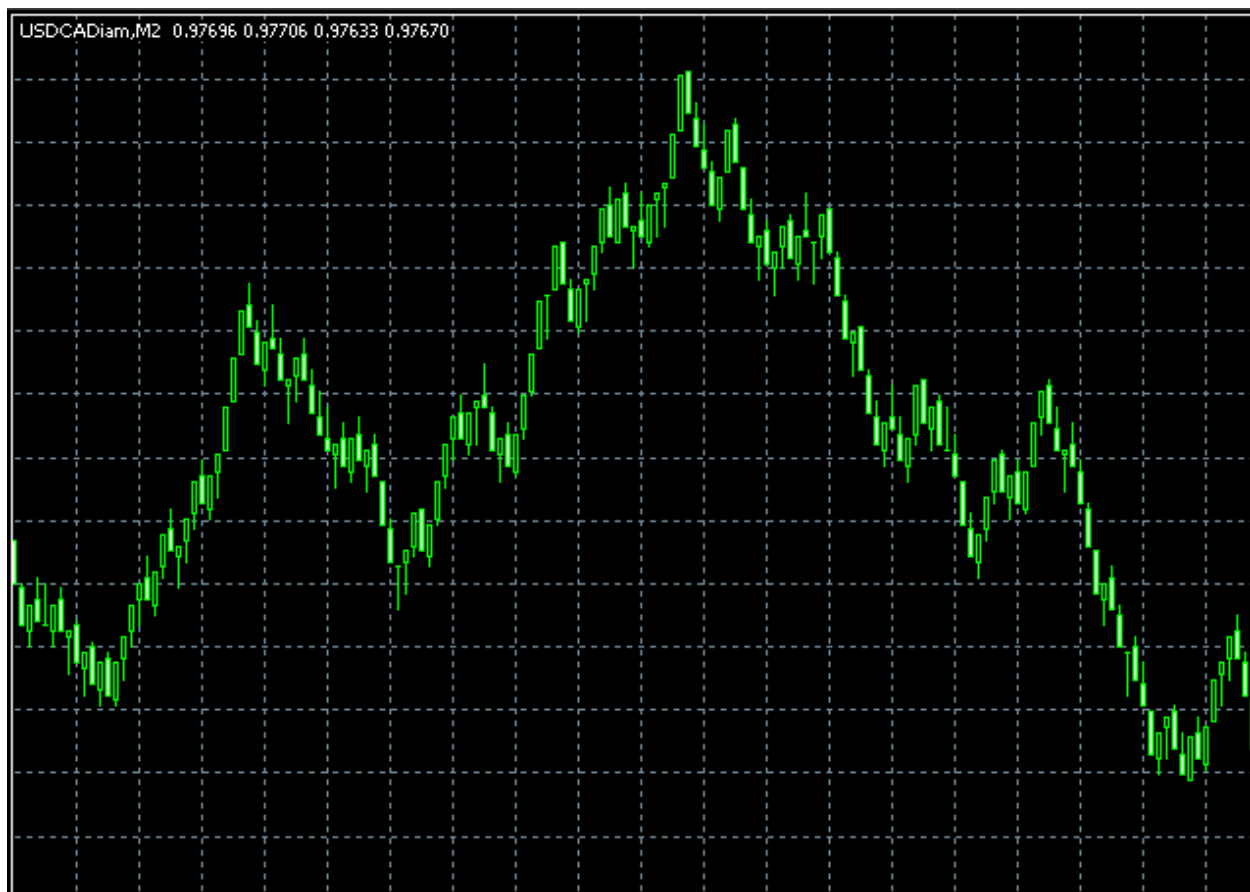
For additional trading tools & training, go here

[Nova Code Trader](#)



For additional trading tools & training, go here

[Nova Code Trader](#)



For additional trading tools & training, go here
[Nova Code Trader](#)