

بِسْمِ اللَّهِ الرَّحْمَنِ الرَّحِيمِ



**SnR × SnD × PA Mastery**

*Price Is Everything 1.0*

*Some Bullshit from here & there*

People know me by the name of [AshiQ](#). I have started trading journey on 2014 from forex factory (FF). My foundation of trading came from some old thread of FF like TMS >James16group >price is everything >romancing the price >RTM> Malaysian community specially BBMA and some people who trade [PA with SnR](#) & after learning all the different stuff from different people I got to know that to become a consistence on trading your need few thing in order to make a proper trading plan. So here I'm sharing an idea how or what you need to learn step by step. You believe it or not you really need all of those to become an perfect trader, maybe you will ignore it for now to look for shortcuts & fancy things from fancy people but after years of and being frustrated you will agree with me and only then you will realize the important of this statement. Let's move forward will share step by step process and then in idea how you can arrange it ....

**Your Trading Plan should be like this:**

**1. Identify your Direction.**

\* Whatever you are comfortable with like Price Action/SnR /SnD\* EG / BBMA.

**2. Choose Your Zone you want to Trade. (Direction=High probability/Counter = Money Management)**

\* You can Use EG/SnR/BBMA

- Perfect Setup (AQZone)

**AQzonex = EG/EF zones with logic.**

- MTF AB \*\*\*

- MTF EG

- MTF HEG \*\*\*

- Golden EG

- MCEG

-MCEG

**3. Whatever your Zone is you always need Hints (Confirmation) from Market to understand your Setups have probability to work.**

\* Some people Use BBMA.

\* Some people Use Engulfing.

\* Some people use Rejection.

**4. The final process is entries. You should have your own entry criteria.**

\* People Use QM (Various way)

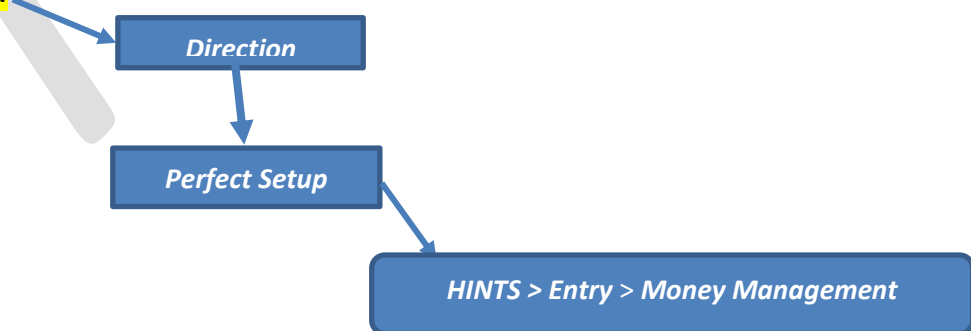
\* BPE (Various way)

\* TL BO with EG & Entry

and many others way...

*So just go through the PDF you will get an idea how you can set it. Read until you can't understand each thing & obviously lots of practice.*

**So in short term you need**



*Market phase to know the direction and prepare yourself if you are trading with trend or trading counter trend.*

*SnR/SnD(EGs) to know which area trading focusing to take decision*

*Perfect setups to find the important area of trading where price can give reaction*

*Confirmation is very important to know the probability of your chosen area to work*

*And then place your entry with the rules you follow or the entry method.*

*The last part always is mindset which is very important to follow.*

**Below I have shared some of my perfect setups that can help you to take decision for trading. Master one setup and use it and see the results. For details I'm keeping this as open discussion... Join the discussion area and master it ...**

**For more example and learning**



**@AQzoneFx**

# Trading Plan

## Direction: Market Phase

- MSnR
- SnD( Engulfing)
- BBMA

## Perfect Setup: sharing some of my best tools that I use.

- Strong Zone
- Golden EG
- MTF AB
- MTF EG

## Confirmation: Use what you know or find what is useful.

- BBMA?
- Engulfing?
- Rejection?

## Entry:

- QM
- Gap
- TLBO & EG

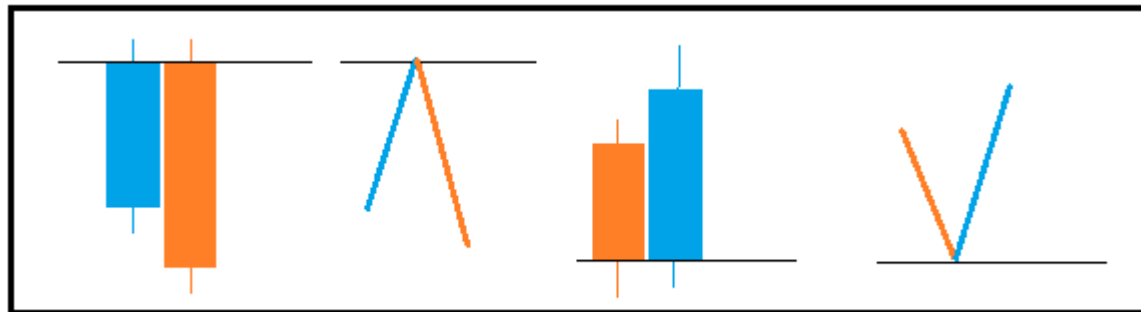
## Momentum: check how price is coming

# Direction (Part 1)

## ❖ SnR view:

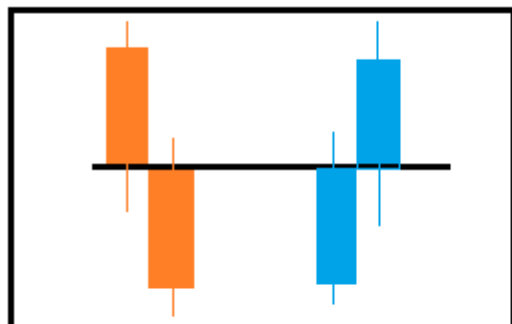
(1) Classic & (2) Gap (Open-Close) (3) BO and (4) HNS (LS)

1) **Classic:** Classic is A & V type.



Classic A V

1) **Gap** (Open-Close)

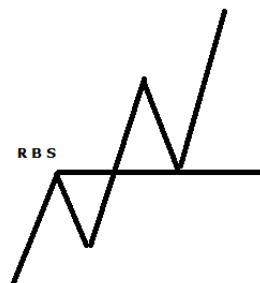


Gap SnR

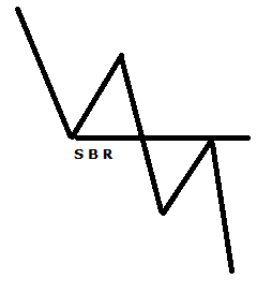
3. **BO** (Breakout SnR)



Gap BO

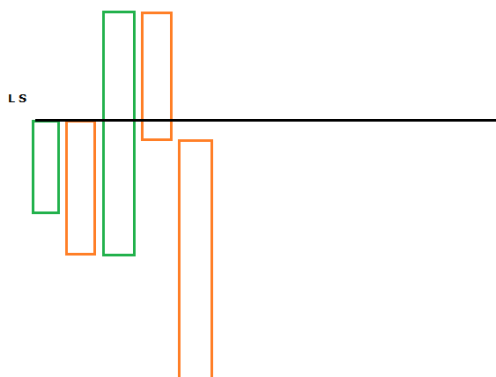


RBS



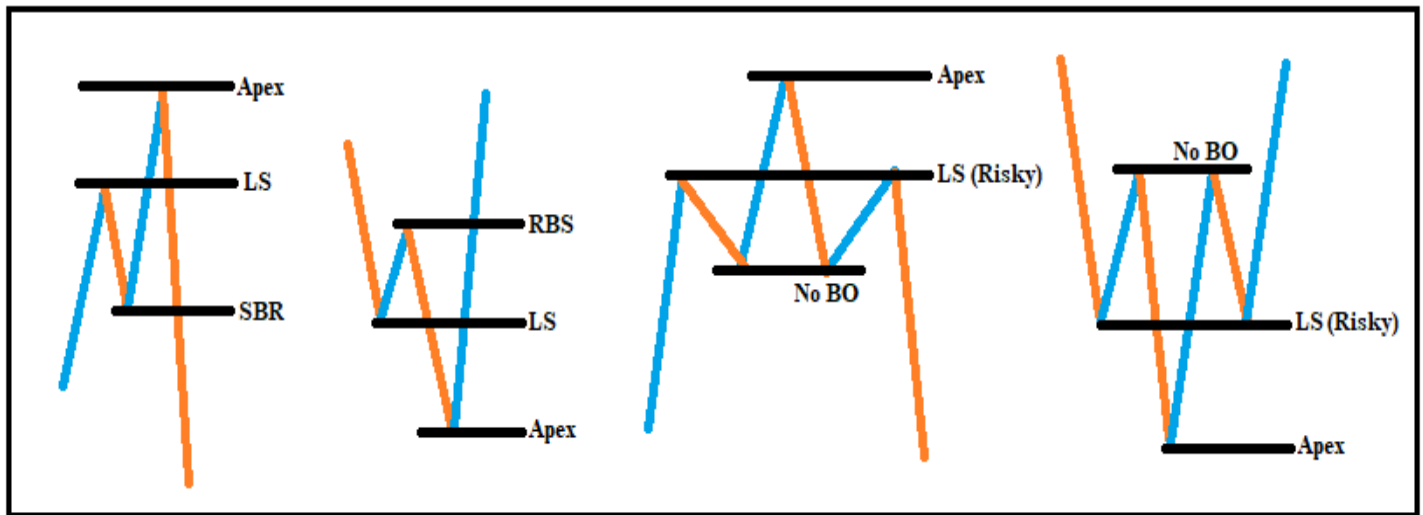
SBR

4. **HnS** (L S)



LS

## Types of SnR:



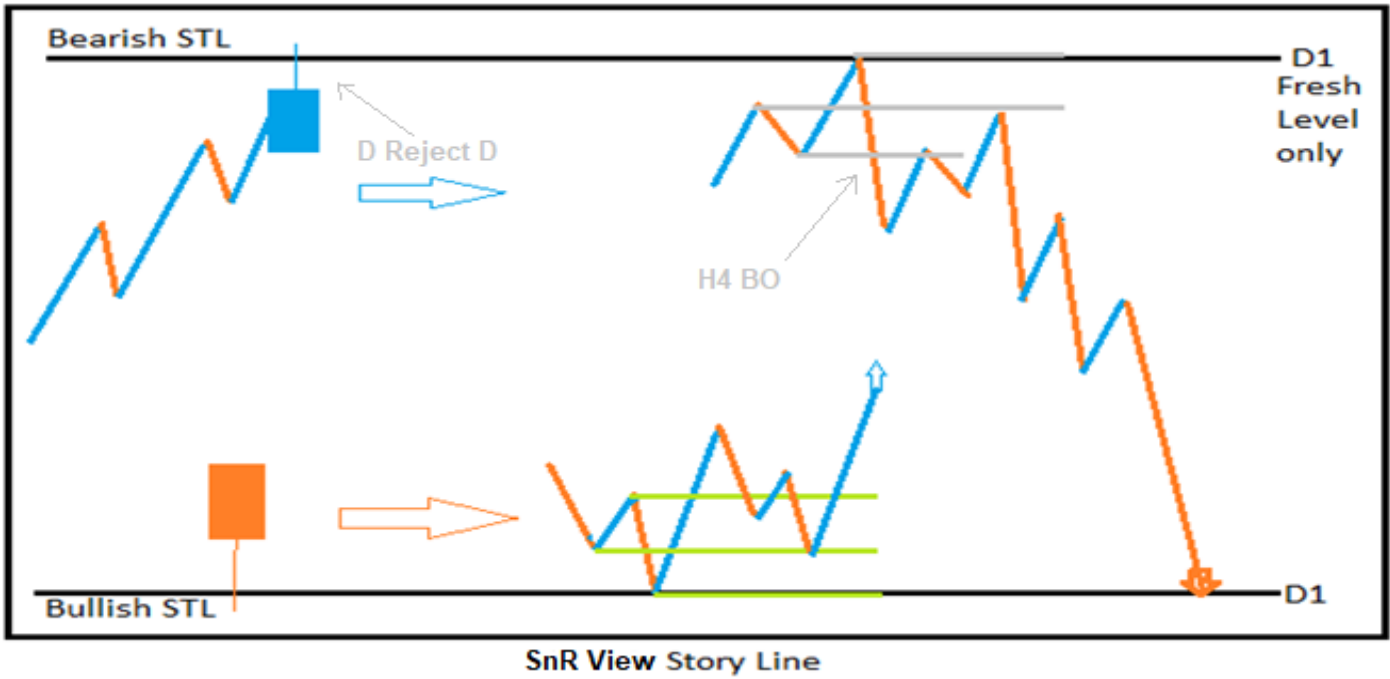
Types of SnR

### ▪ SNR view Story Line

We use W & D Story Line.

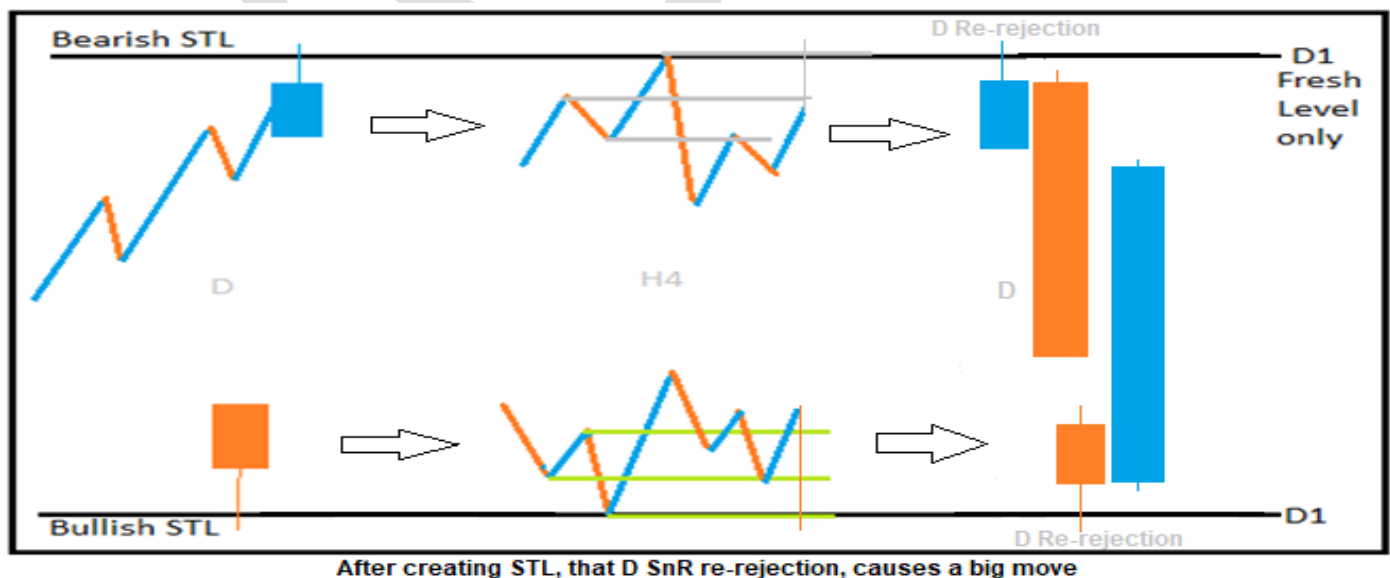
- **Weekly Story Line:** W rejects W, D Classic SnR Breakout, Weekly STL starts...
- **Daily Story Line:** D rejects D, H4 Classic SnR Breakout, Daily STL starts.....

Daily STL example--



**Note:** Monitor Daily Fresh Level on H4, If H4 rejects the Daily level, it's probable that, the price will respect that D SnR & start STL from here. If price breaks the Daily fresh level hold the trade till the next Daily fresh level.

\*After creating Storyline, when price Re-rejects that Daily SnR, Happens a big move. Ex:-



- **EG view:**

**There is several way to use EG here I will share only one way to find direction which is –**

**Direction (Storyline):** TF: Monthly/Weekly/Daily

-Look for engulfing (EG)/Engulfing Failed (EF)

-Price need to enter zone direction

-Then Make a Confirmation Direction

**Confirmation of Direction (COD):** TF: Weekly / Daily / H4

**One TF below Direction TF**

**Reaction:** newly created EG within direction TF (1<sup>st</sup> Confirmation).

**Reversal:** After EG there will be an EF (Old) (2<sup>nd</sup> confirmation).

Monthly Direction - Weekly Confirmation

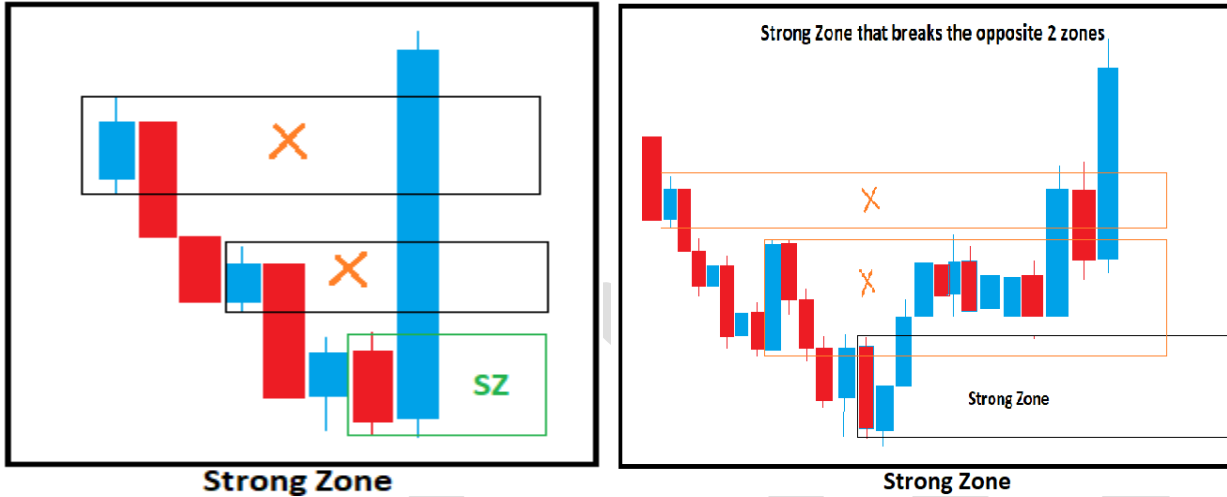
Weekly Direction - Daily Confirmation

Daily Direction - H4 Confirmation

# Setups

## ❖ (1) Strong Zone:

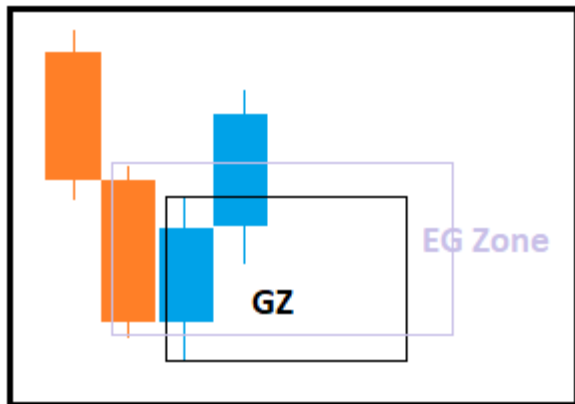
Is an EG zone that breaks opposite 2 EG.



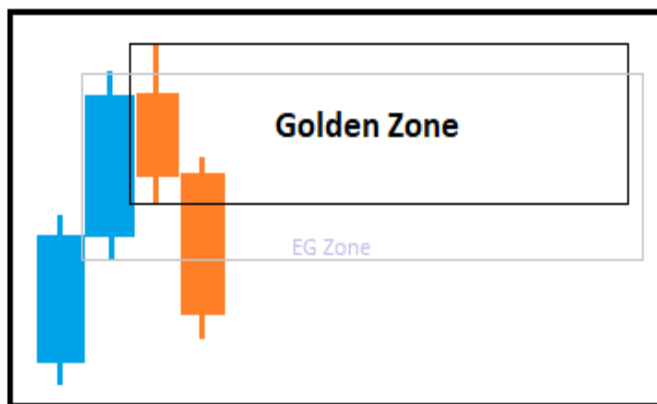
*This is something you can use as confluence for other perfect setups which will be more accurate and stronger than normal engulfing setups.*

## ❖ (2) Golden EG:

GEG is in H1 EG's 1<sup>st</sup> CS area in which, H1 EG is made by 2 CS.

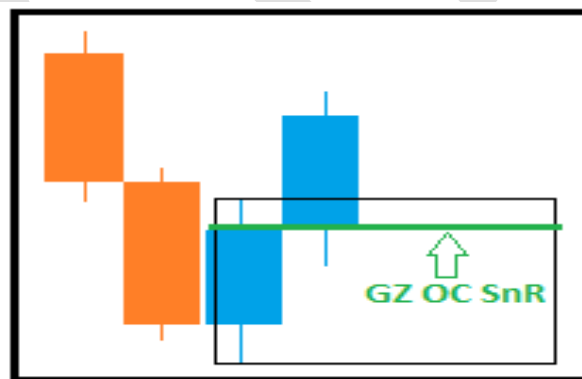


Golden Zone Buy



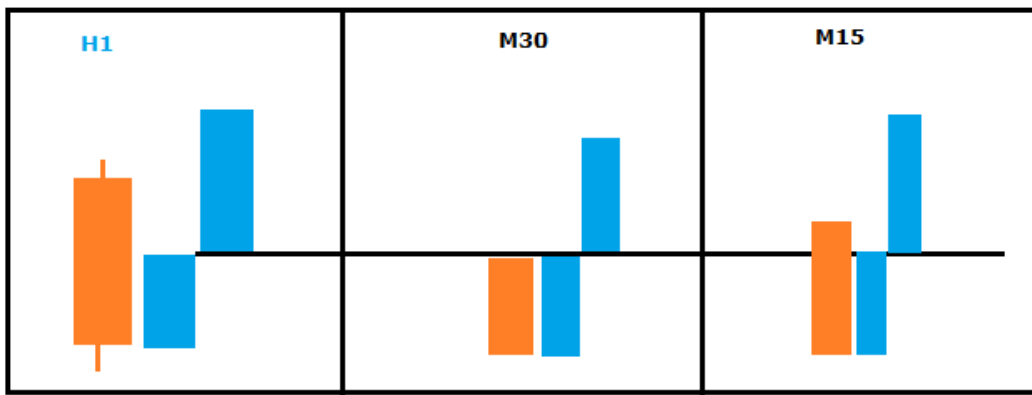
Golden Zone Sell

\***Golden EG OC SnR:** Open-close SnR within Golden EG is the entry point.

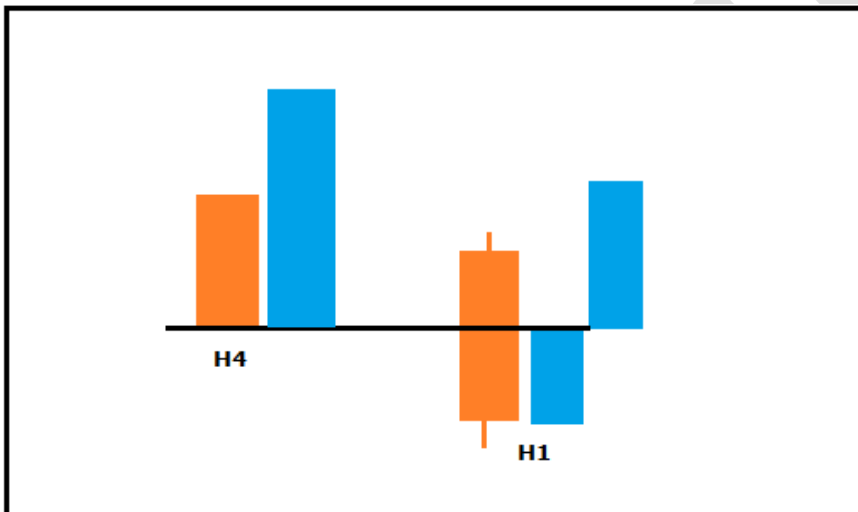


Golden Zone OC SnR

\*If GZ OC SnR is same at 3 TF such as H1-M30-M15, price will react at this SnR.



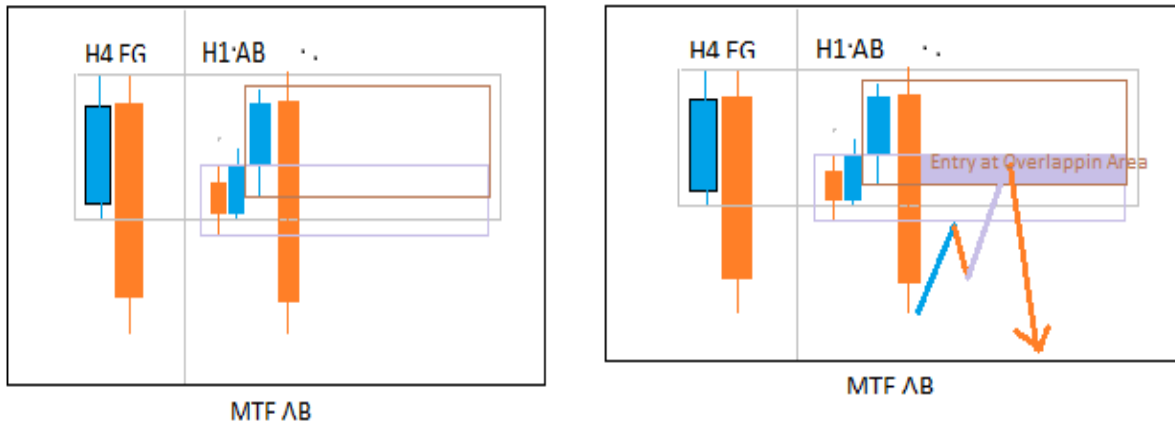
2<sup>nd</sup> Type which is strong is IF H4 have classic SnR and H1 is Golden EG ...



- There is 2 way to trade Golden zone 1 is direct entry another is confirmation entry.

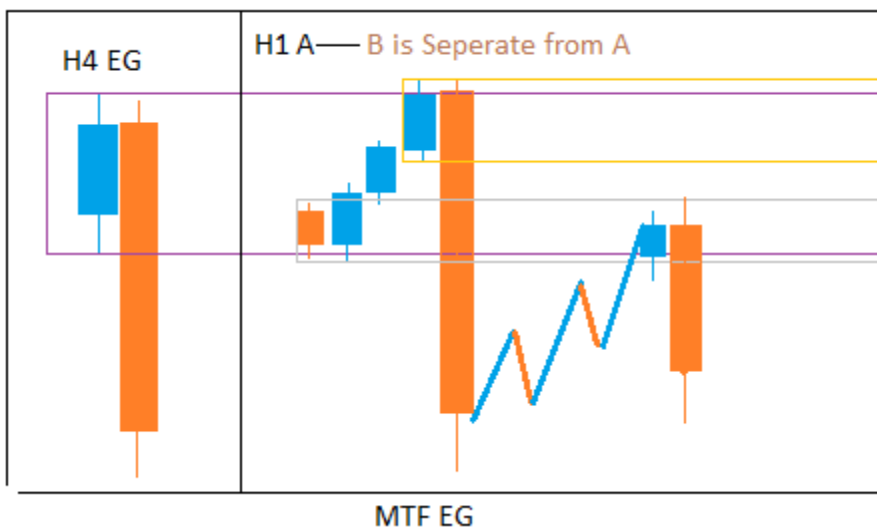
❖ (3) MTF AB:

H4 EG is created with H1 AB adjacently in H1 TF. For Day trading mostly use H1 EG to M15 AB adjacently. For example, H1 EG zone is in M15 created AB. Entry will be at AB overlapping zone.



❖ (4) MTF EG:

H4 EG is created in H1 A and separately created B, not adjacently.



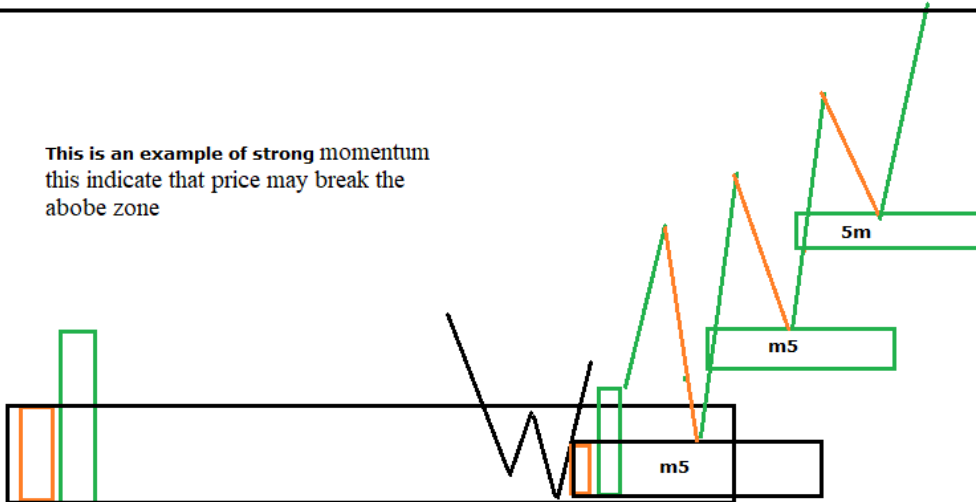
# Execution

## ❖ Momentum Checking:

Not to create EF in m5 TF, that means in m5, every EG is respected. If it is, the following H1 zone (price is going towards) most probably will Breakout. By momentum checking we can be more confident in holding a trade till the end of the volatile move/trend. \*It is mostly helpful for swing trading.

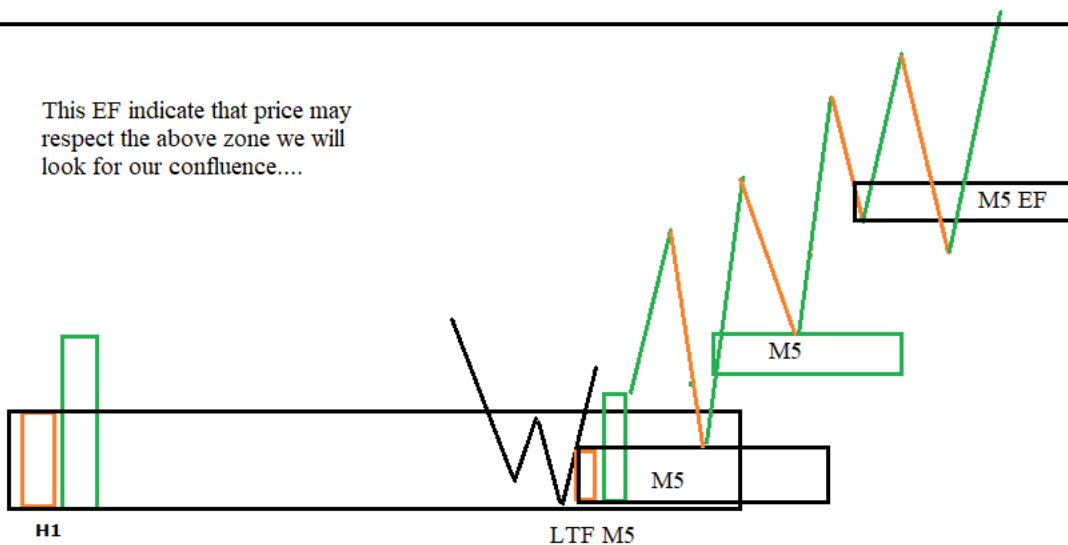
H1 Zone as example

This is an example of strong momentum this indicate that price may break the above zone



HTF ZONE

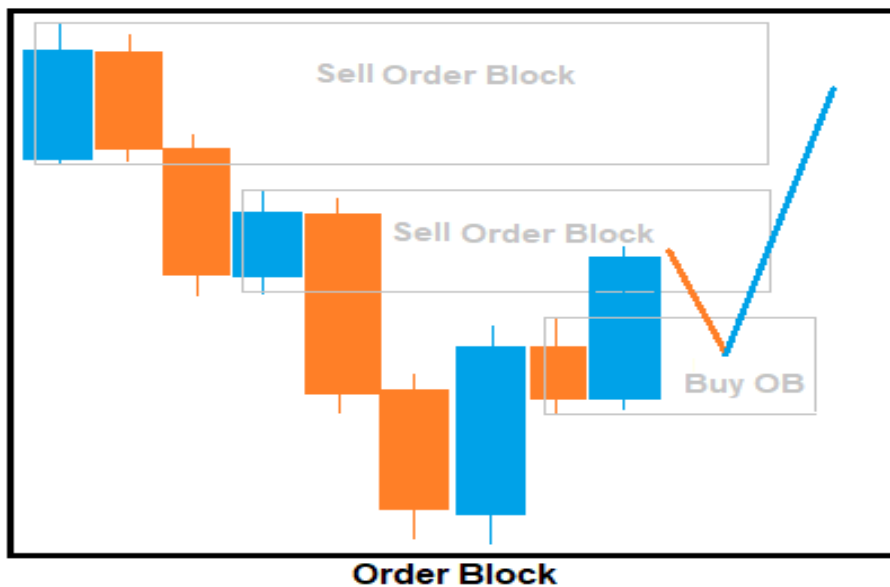
This EF indicate that price may respect the above zone we will look for our confluence....



❖ **Trouble areas:**

Trouble Area is Road Block Area. Opposite every EG zone is Road Block. Example:-

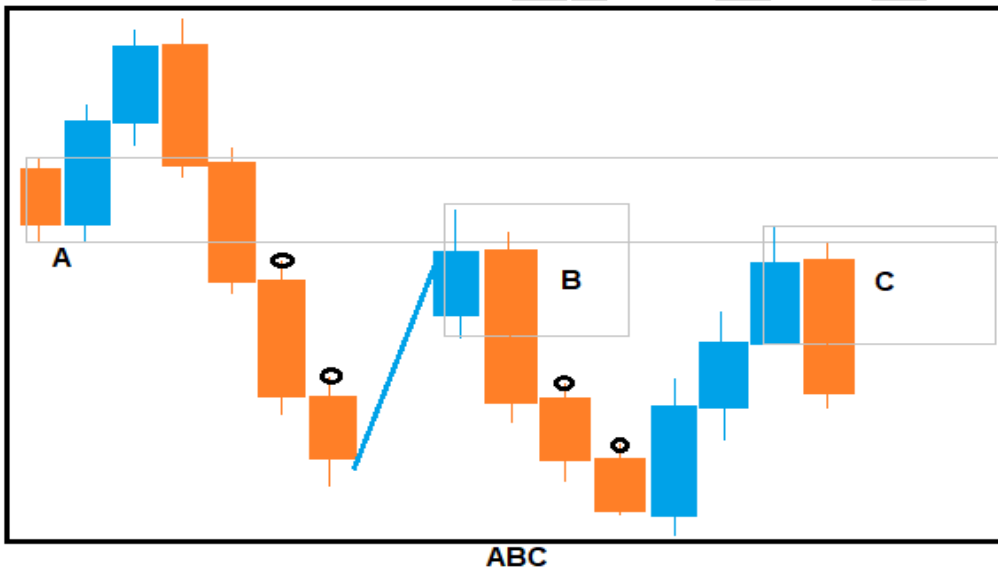
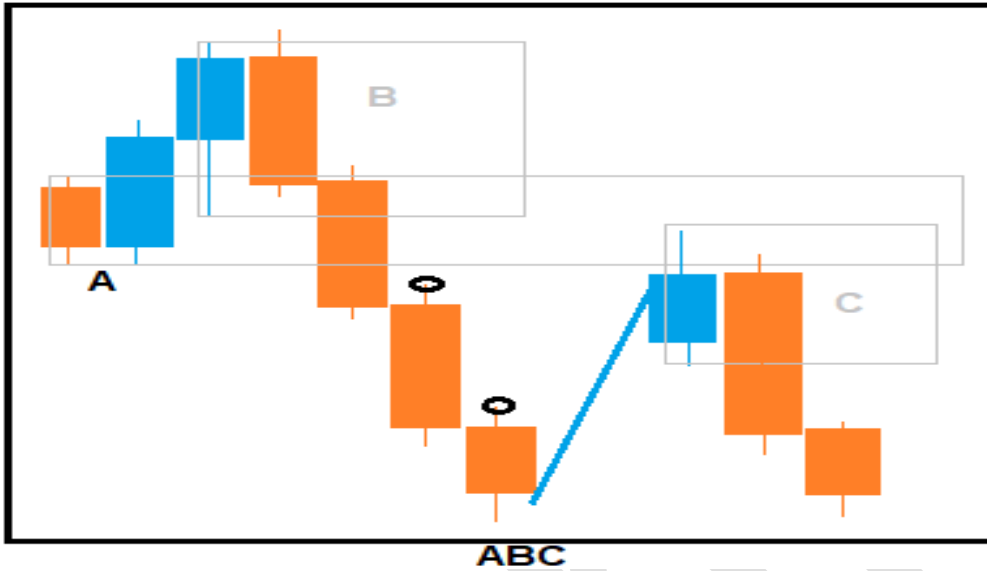
Order Block = Road Block ☺



Useful when taking entry's ....

❖ ABC: Strong confirmation on LTF when it appear.

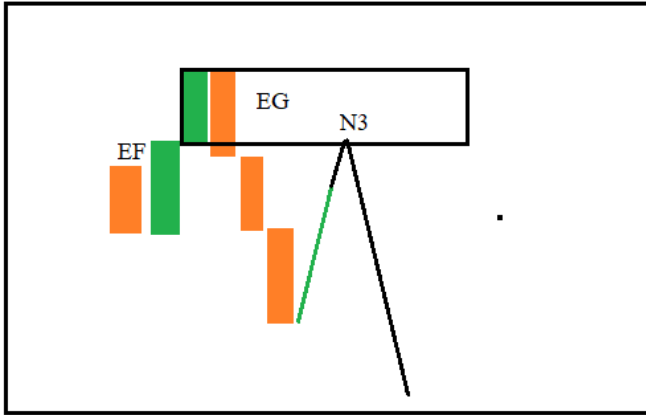
ABC is a set of 3 EGs. 1<sup>st</sup> one is EF and it's a zone. B & C are opposite EG, these two are touched with EF zone.



❖ EG/EF: Greats tool as confirmation.

EG stands for Engulfing & EF for Engulfing Fail.

Example:

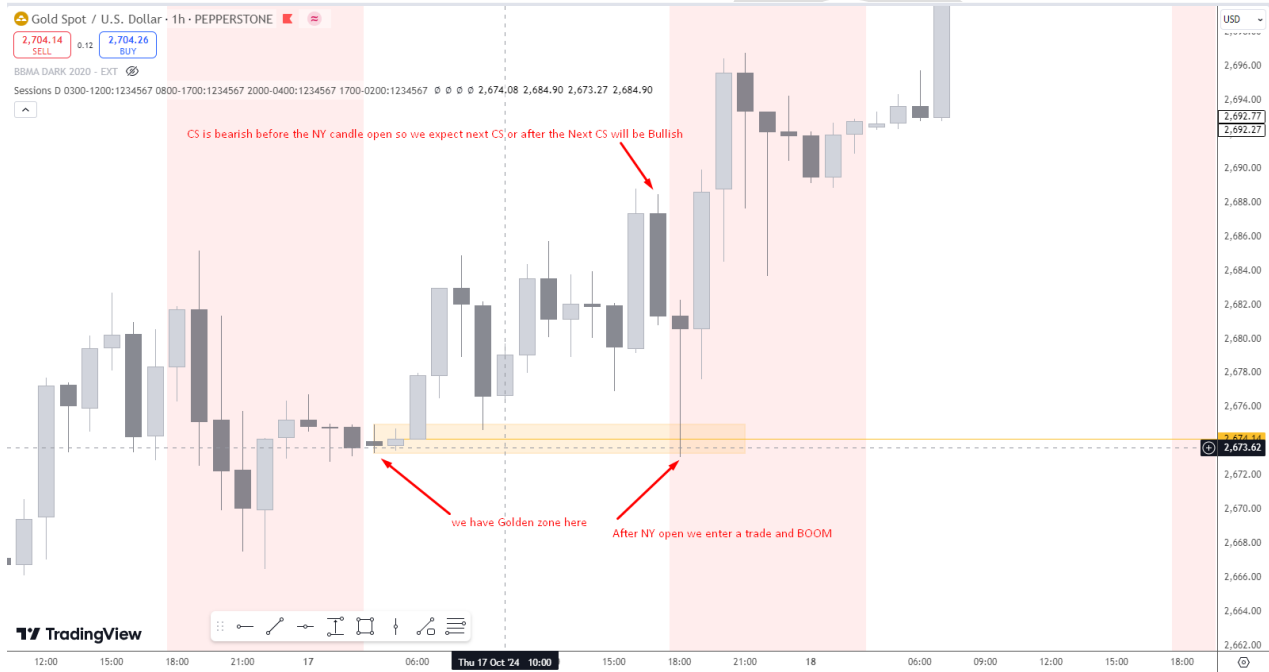


# Special Tools

## ❖ Session Trading: For Gold Chart Only

The H1 CS before starting NY session, happens 80% fake move. So if the prior candle of NY open is Bearish then we expect NY candle to be bullish and vice versa. But keep in mind sometime it may take 2/3 candle to happen session trading. More will be on live session .....

Real chart examples:



Some Note:

*I have shared some PDF before please collect those PDF to learn MSnR which is based on AKFX YouTube SnR series important key point of 1 to 10 videos and also there is one more PDF for Engulfing method where I shared EG as ABC to identify important zone.*

*"Don't limit yourself to just a few things — learn everything you can and implement it in your trading. You'll be amazed at how much it helps you in your journey."*

*"Forex trading is not a get-rich-quick scheme. The faster you accept this reality, the faster you'll build true consistency and long-term success."*

*Forex trading is not just about charts and profits — it's about discipline, patience, and self-growth. Every loss teaches you something, and every win reminds you why you started. Keep believing in your journey, because consistency will reward your dedication.*

*I don't know how long I will be active in group please pray for my health ☺ and stay connected in group maybe more is coming who know.... Allah Hafiz*

***I will share A2Z details of my trading strategy based on Price action\*SnR\*EG\*BBMA in future Insha'Allah Stay tuned***