

# Buy Bad Bunny Tickets 2025

Gigsberg Is A Secondary Ticket Marketplace. All Tickets Are Guaranteed And Secured!



TradingFinder > Education > Forex Education > Fractal & Inversion Strategy in ICT: 1-Hour, 5-Minu...

## Fractal & Inversion Strategy in ICT: 1-Hour, 5-Minute, and 1-Minute [Free Guide]

Categories: Forex Education ICT (Inner Circle Trader) Education Trading Sessions Education Trading Strategies Education

Article Level: Intermediate



Writer: Eda Kaya



Reviewer: Davit Kvaratskhelia



Fact checker: Rajesh Sharma



Modified: Jul 8, 2025

Comments: 0

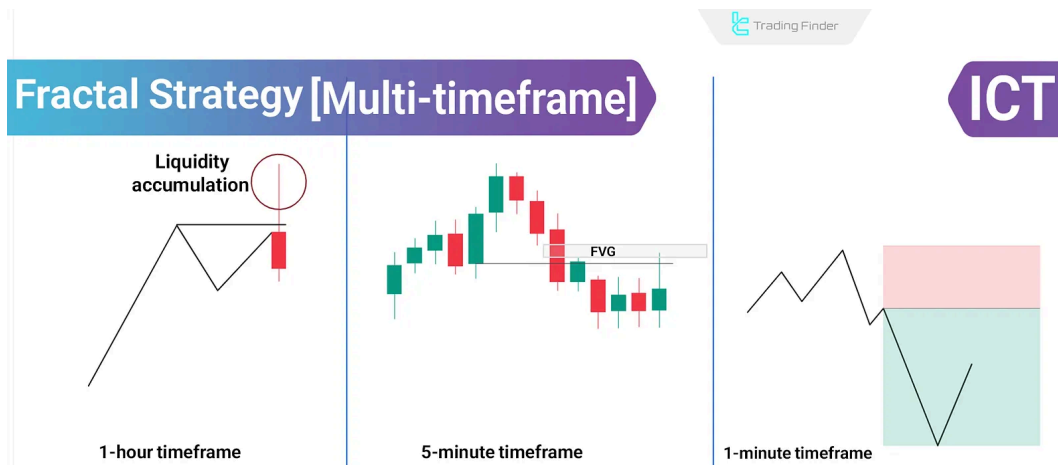
Views: 128

8 Min

The **Fractal model in ICT style** is a method for aligning price structure across **timeframes** and **entering reactive market zones**.

This model identifies a price structure **Inversion** by analyzing **higher timeframe** candles for **directional bias**, confirming structure on the **mid timeframe**, and **entering** on the **lower timeframe**.

.The **T-Spot**, or **entry zone**, is where the **wick** of the **higher timeframe** candle is expected to **form**.



Training on the use of Fractal and Inversion Strategy in ICT Style

### ?What Is the Fractal and Inversion Strategy in ICT Style

The **Fractal and Inversion Strategy in ICT style** is a multi-timeframe approach for analysis, **confirmation**, and **market entry**

In this model, the price movement structure is repeated across timeframes, and by aligning their **direction**, traders can find **high-probability, low-risk entries**

#### **:Process of Applying the Fractal Strategy**

**Identifying Reversal Zone on Higher Timeframe:** Begin with a higher timeframe like 1H or Daily to **find potential price reversal zones**. These areas are typically identified after liquidity is collected and **;** candlestick rejections are observed

**Receiving Structural Confirmation on Mid Timeframe:** Next, confirm the price structure on a mid- **2** ; timeframe (like 5M) to validate potential entry

**Entry on Lower Timeframe:** Finally, enter the trade on a lower timeframe such as 1M once price **3** . exhibits a valid structural **Inversion** or confirmed reversal in the predefined zone

## **High Timeframe Analysis in Fractal and Inversion**

.In the **Fractal model**, the initial market bias is determined from higher timeframes such as 1H  
This step forms the foundation for **lower timeframe** decisions, as entries without a confirmed higher  
:timeframe direction are **baseless**. **Three Primary Methods for Identifying Bias**

### **Liquidity Sweep**

A quick break and rejection of a **major high or low** in the higher timeframe suggests smart money **activity**

**For example**, if the candle breaks the **previous day's high** but fails to **hold** and **closes below** it, this **may signal the end** of the bullish move

### **Rejection**

After sweeping liquidity, a **confirmed price rejection** from the liquidity zone is needed, usually shown by **a close in the opposite** direction (e.g., a bearish close after a high sweep)

### **Change in State of Delivery**

Look for a behavior shift, often **identified** by a **strong close that surpasses previous candles** (e.g., a **strong bearish candle breaking past prior bullish candles**)



Using Liquidity Sweep in Fractal and Inversion Strategy in ICT Style

### Confirming Structure in Mid Timeframe (e.g., 5-Minute)

After determining the higher timeframe bias, it's critical to get a **structural confirmation** in the mid-frame (e.g., 5M). Without a reversal structure here, the entry on lower timeframes lacks validity

#### ?What Does Breaking Up Close or Down Close Candles Mean

In ICT's Fractal model, **structural change confirmation** often requires breaking through a set of defined candles that reflect the previous trend

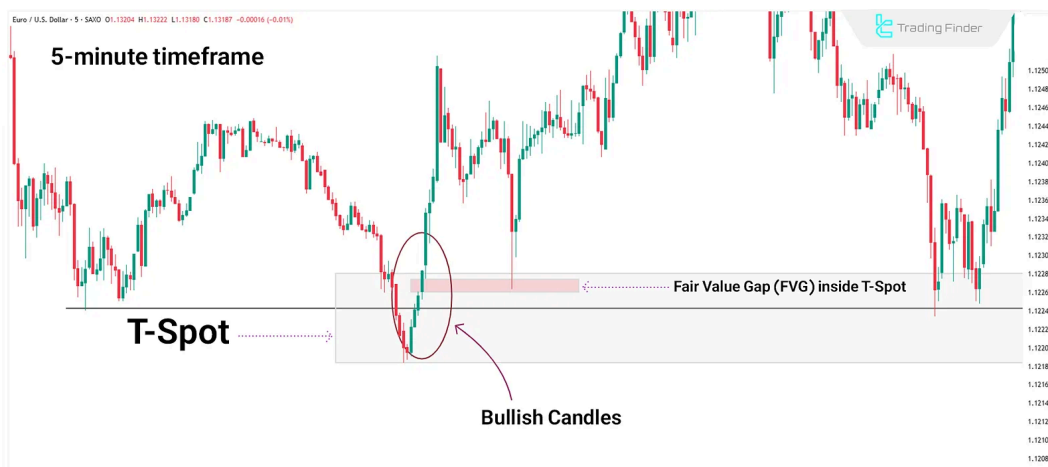
**Up Close Candles:** Bullish candles closing above the open price ⚡

**Down Close Candles:** Bearish candles closing below the open price ⚡

### Defining the T-Spot Zone

The **T-Spot** is the expected wick formation area of the higher timeframe candle. It is the **only valid entry zone**, determined after establishing bias and structural confirmation on the mid-time frame (e.g., 5M)

T-Spot becomes valid when the price breaks through several bullish or bearish candles and forms areas like **Fair Value Gap (FVG)** or **Order Block (OB)** in the **middle** of that **break**



Formation of Fair Value Gap at T-Spot in Fractal and Inversion Strategy in ICT

### Entry Using Fractal and Inversion on Lower Timeframe (1-Minute)

After identifying bias on the high timeframe and confirming structure on the mid timeframe, entry is valid only if a confirmed **Inversion** appears in the **T-Spot** on the 1-minute chart

.This is the ideal point for **entry** with **tightstop-loss** and **highR:R**

### Entry Types in Fractal Strategy

:After the appearance of the "**Inversion**," two types of entries are possible in the Fractal Strategy

**Close Entry:** After the Inversion candle closes and confirms the signal ⚡

**Retest Entry:** Upon price retesting the broken level, allowing for tighter SL and better R:R ⚡

.The choice depends on price behavior, **T-Spot positioning**, and **distance** to the target

### Stop Placement in Fractal Strategy

:Stops must always be set beyond the **Inversion level**

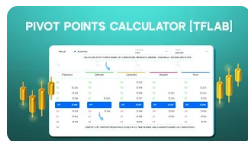
**Longs:** Below the last wick low ⚡

**Shorts:** Above the last wick high ⚡

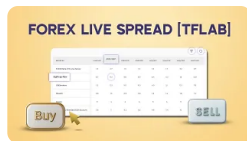


Finding Lower Timeframe Entry in Fractal and Inversion Strategy in ICT

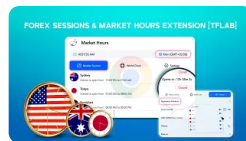
#### You May Like :



Forex Pivot Points Calculator Tool; 150+ Instruments Across 6...



Forex Live Spread Tool [Compare Spreads of 70 Currency Pairs...



TradingFinder "Forex Sessions & Market Hours" Extension



Crypto Market Watch Mini App for Telegram – Market Watch for...

### ?What's the Difference Between Inversion and Breakout

**Inversion** means a **confirmed price reversal** from a specific zone, where the price first breaks a level (like a short-term high/low) and then immediately returns and closes in the opposite direction

Unlike a breakout, which is merely a level break, **Inversion** includes **breach, return, and close** in the .opposite direction—indicating a real market **reversal** and not just a liquidity sweep

## Conclusion

The **Fractal model in ICT style** aligns timeframes for reactive entries. First, identify directional bias in the **higher timeframe** through liquidity collection and rejection. Then, confirm a structural shift in the .mid-time frame by **breaking prior candles**

Entry is only valid when the price shows a confirmed **Inversion** within **T-Spot** on the **1-minute chart**. .This strategy allows for precision entries, tight stops, and better risk control

## FAQs

- What does the Fractal Model mean and why is it used in ICT? ∨

It refers to the repetition of price structure across timeframes. In ICT, this enables directional analysis on higher TFs, confirmation on mid TFs, and entry on lower TFs. ∨
- What's the difference between Inversion and Breakout? ∨

Breakout is only the level break. Inversion includes the break, return, and close in the opposite direction, marking true reversal. ∨
- Can you enter if Inversion occurs outside T-Spot? ∨

No, Entry is valid **only** when Inversion occurs inside T-Spot. Anything else contradicts the model's logic. ∨
- How to detect structural alignment across timeframes using Fractal model? ∨

Bias on Higher TF (e.g., Daily or 4H)  
Structural break on Mid TF (e.g. 15M or 5M) ∨
- When to choose between Close Entry and Retest Entry? ∨

Confirmed Inversion on Lower TF (e.g., 1M)  
If the market moves fast, Close Entry is better. If price is slower or R:R is tighter, retest entry is more suitable. ∨
- How many candles are required for structural confirmation on mid timeframe? ∨

Usually 2 to 4 Up/Down Close candles, provided a strong break exists. ∨
- Does this strategy work in all markets? ∨

Yes, but best performance is in **liquid and well-structured markets** like forex and gold. ∨
- Which timeframes should this model be used on? ∨

Standard combo is 1H/5M/1M. But can also scale to Daily/1H/15M as needed. ∨
- What tools are recommended for identifying FVG or OB at T-Spot? ∨

Platforms like TradingView with ICT indicators or manual price action annotations. ∨
- Can this strategy be applied to higher timeframes? ∨

Yes, The fractal model is multi-layered and repeatable. Just adjust timeframe scales accordingly (e.g., Daily, 4H, 15M). ∨



5 From 5.0

(1)

Rate this post



Table Of Content



What Is the Fractal and Inversion Strategy in ICT Style?

High Timeframe Analysis in Fractal and Inversion

Confirming Structure in Mid Timeframe (e.g., 5-Minute)

Entry Using Fractal and Inversion on Lower Timeframe (1-Minute)

What's the Difference Between Inversion and Breakout?

Conclusion

Top Posts



What is an ICT Order Block and How to Trade It?

Ram Nisha | Dec 23, 2024

8,742 Views



Break of Structure (BOS) on ICT

Eda Kaya | Dec 22, 2024

8,139 Views

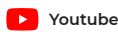
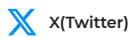


Turtle Soup Strategy from ICT Style

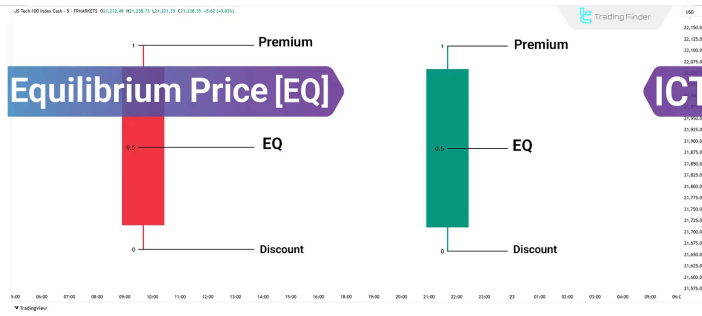
Arjun Mandal | Dec 23, 2024

8,180 Views

Our Social Media



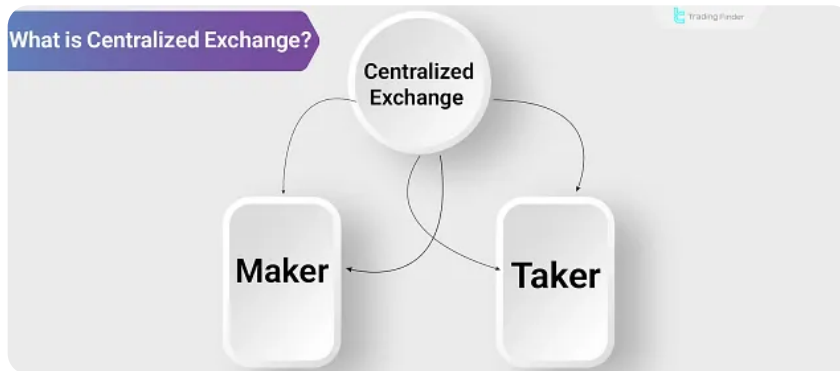
Latest Articles



### ICT Style Price Equilibrium: How to Calculate & Use It with PD Array Components

Forex Education

Rajesh Sharma | Jul 14, 2025



### What is a Centralized Exchange? High Liquidity & Diverse Financial Services

Cryptocurrency Education

Nino Gogochashvili | Jul 13, 2025



### Pivot Point Indicator: Calculation Via Floor, Camarilla, Woodie, and Fibonacci

Forex Education

Rajesh Sharma | Jul 13, 2025



Complete training in financial markets such as "Forex," "Stock Market," and "Cryptocurrencies" only becomes comprehensive with tested trading tools and strategies. "Trading Finder," with its experience, aids traders and investors in gaining a correct understanding and deep learning. The training programs are designed based on tools for traders of all levels, from "beginner to advanced."

English (EN) ▾

[Our Team](#)

[Jobs](#)

[Report a Bug](#)

[Advertisement](#)

[Affiliates](#)

[Our Scores](#)

[Indicators & Oscillators](#)

[Products](#)

[Financial Market Education](#)

[Trading Tools](#)

[Trading Tools](#)

**Risk Disclosure:**

Participating in financial markets involves high risk, which can result in the loss of part or all of your investment. There are no

[Show More](#) 

**Disclaimer:**

[TradingFinder.com] assumes no responsibility for any potential losses or damages. All decisions are the sole responsibility of

[Show More](#) 

**Disclosure of revenues and advertisements:**

The "TradingFinder" platform offers various services, some of which, like introductions, are free, while others, such as our

[Show More](#) 

[Privacy Policy](#)

[Risk Warning](#)

[Cookies Policy](#)

[Copyright and Idea Submissions](#)

[Terms and Conditions Agreement](#)