



The Characteristics of an A+ Setup

@_notbarney99

Ellia Roger

*If you are going through Hell
KEEP GOING!
Why would you stop in Hell?*

SPECIAL TOPIC

EG + SNR + MTF

(SETUP)

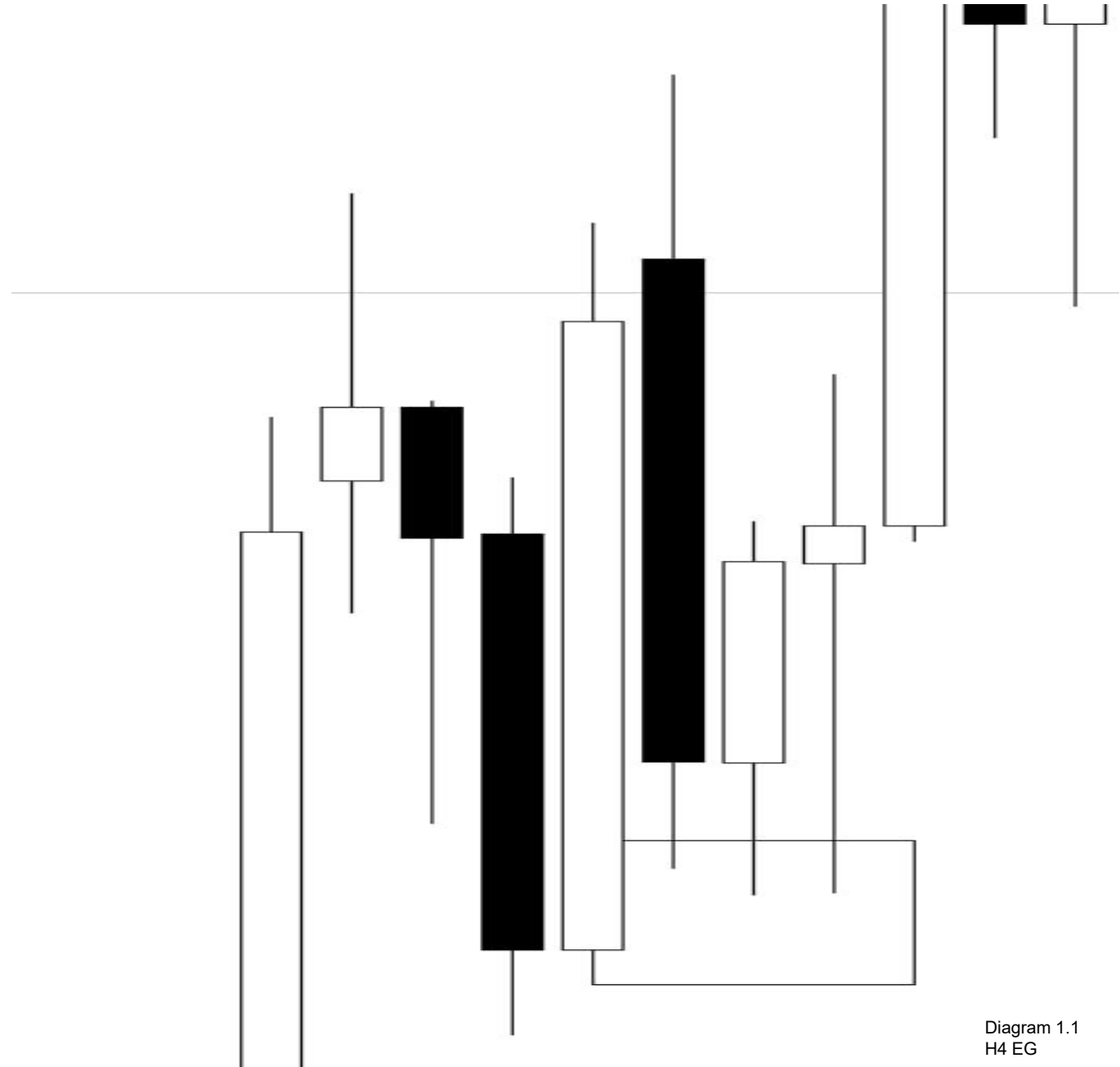


Criteria 1

Anchor Timeframe

- *The **Anchor timeframe** will be the first thing you spot to simplify your decision making .*
- *It will usually be 1 or 2 timeframes above the **Structure Timeframe** .*
- *In this timeframe you are required to Identify :*

An Engulfing



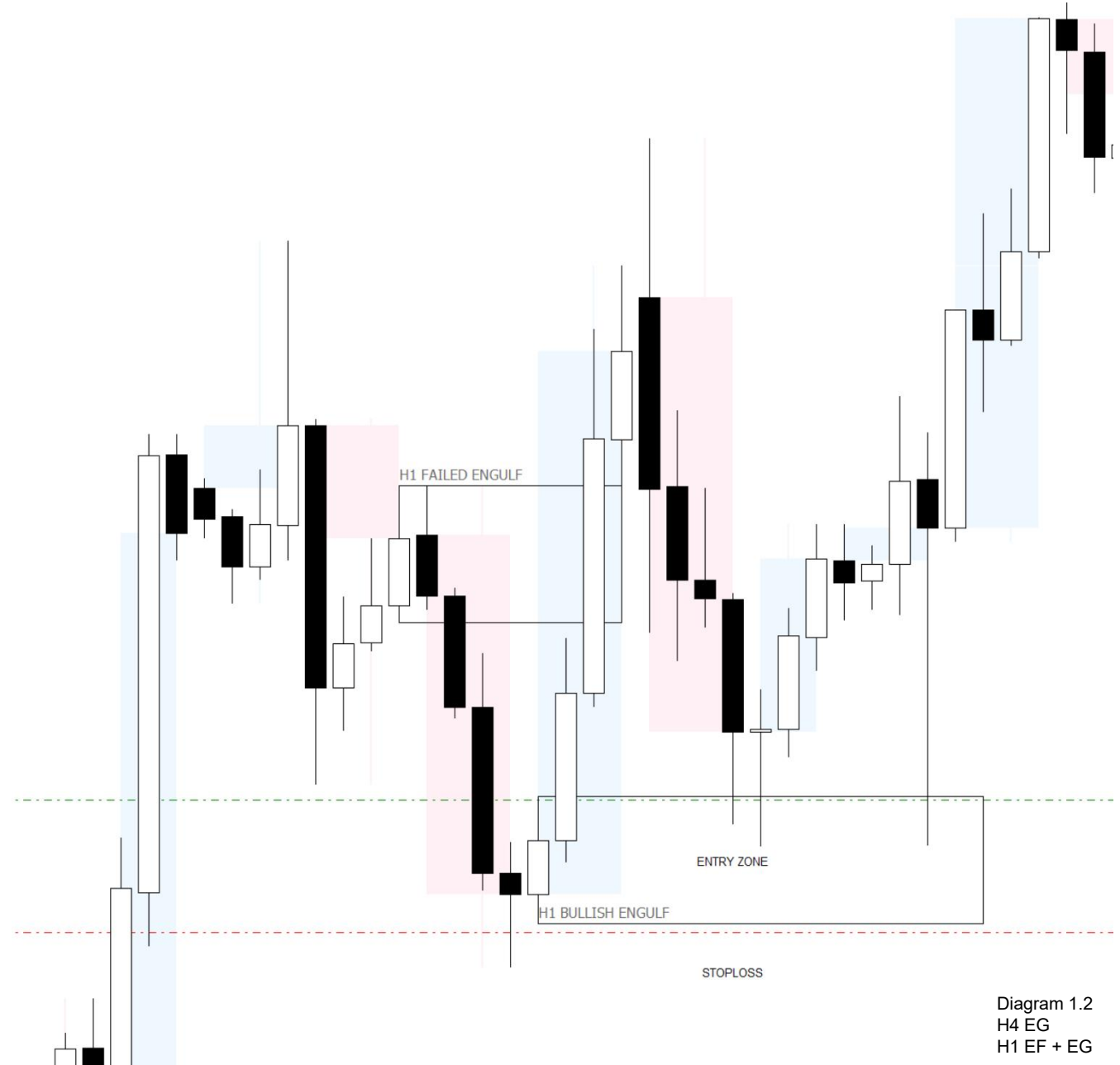


Criteria 2

Structure Timeframe

- *The Structure timeframe is the **Decision timeframe** whether the Anchor timeframe provides an A + Setup or Not .*
- *Stick to a **Golden ratio of 1:4 Min - 1:8 Max** when Swapping between timeframes*
- *In this timeframe you are required to Identify :*

A Failed Engulfing + Engulf





Criteria 3

Optimal Entry Timeframe

- *1 or 2 timeframes lower from Structure timeframe*
- *Locate a the **Lowest/Highest Continuation Structure** within the **Breakout Range***
- *Continuation Structure is usually reffered as : **Hidden Base***
- *If price decides to close below the **Hidden Base Zone** (**Exit ! Immediately**)*

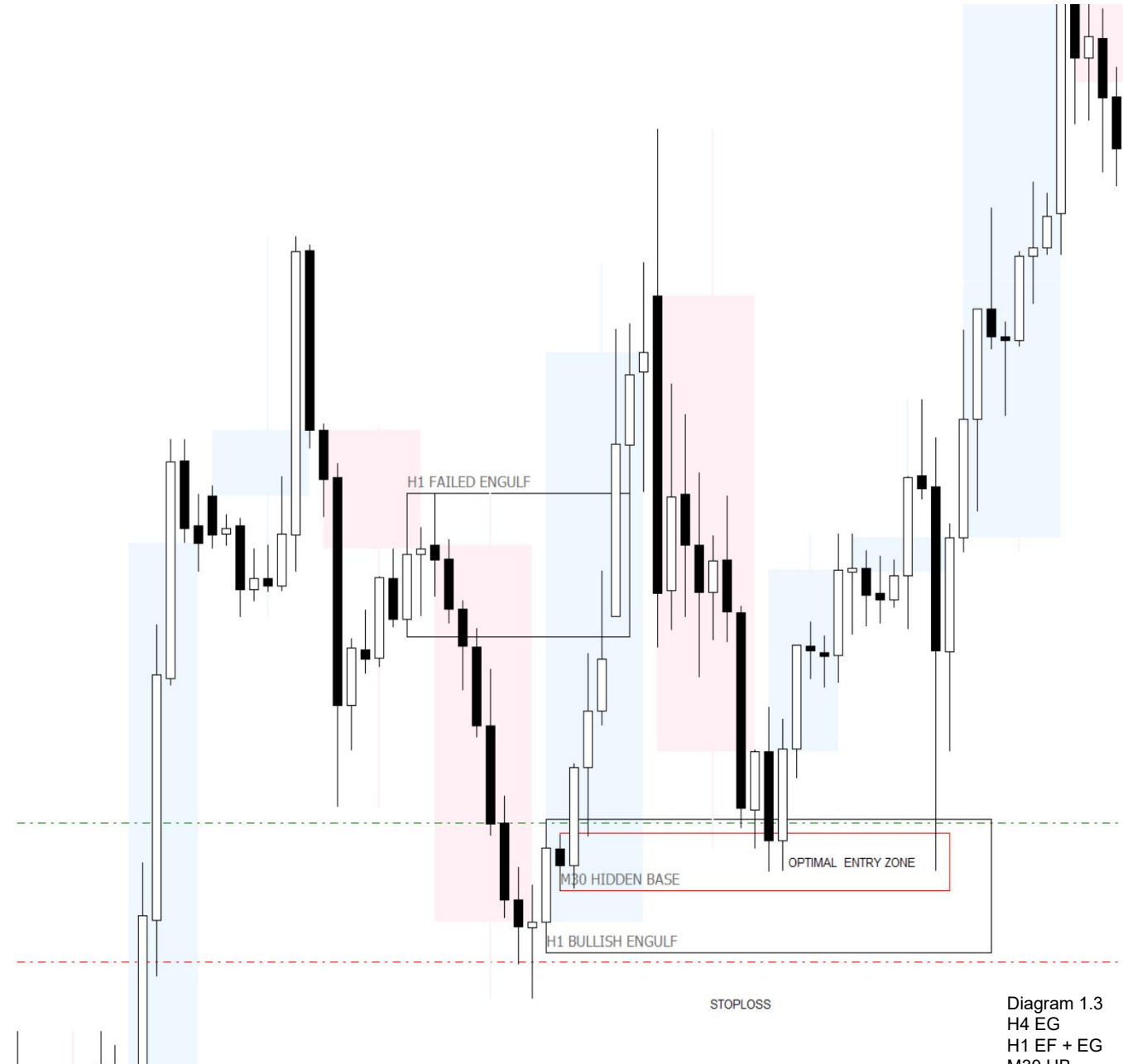


Diagram 1.3
H4 EG
H1 EF + EG
M30 HB



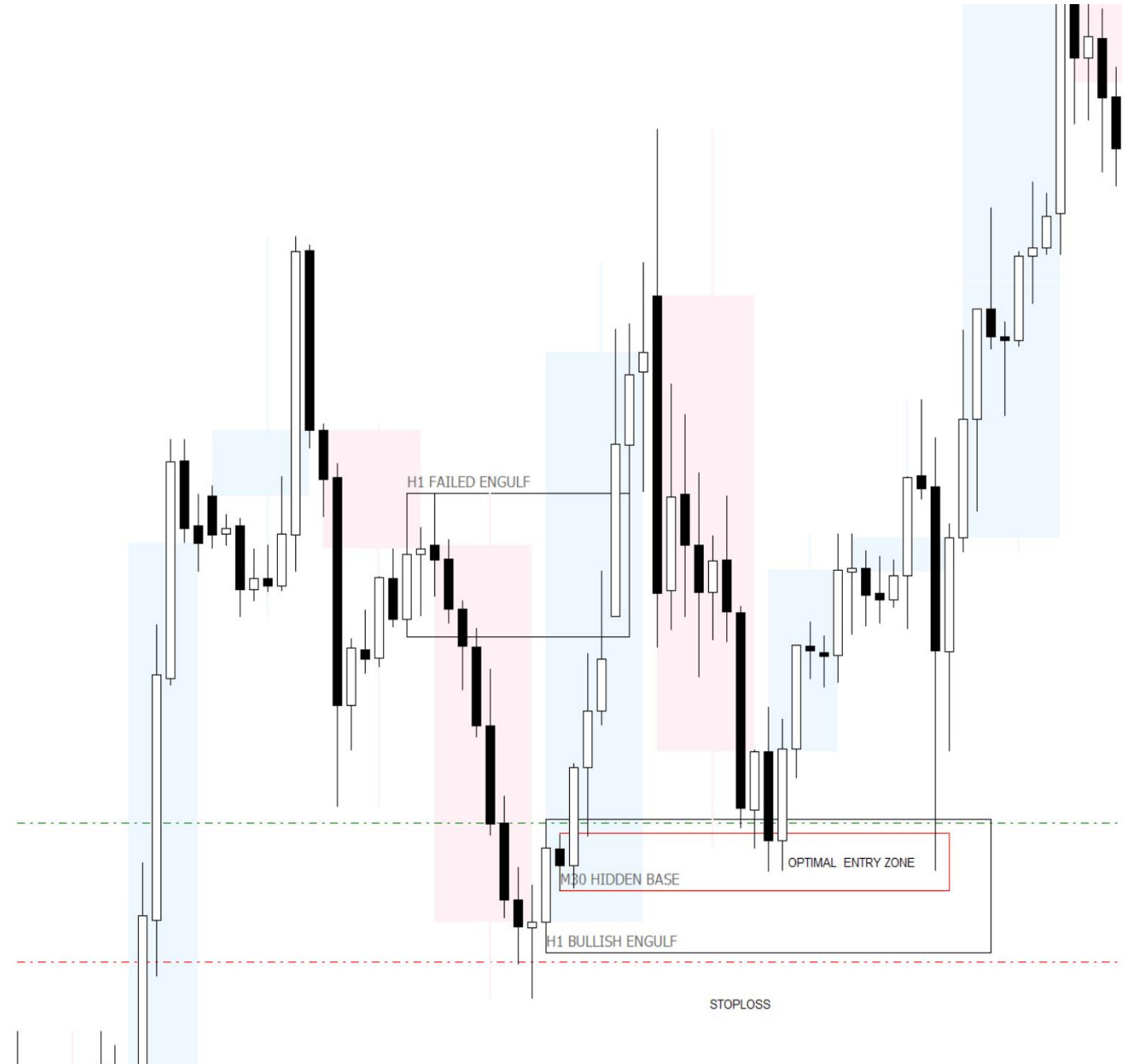
Abstract

Step By Step

1. Identify your **Engulfing**
2. Validate the Structure inside the Engulfing Candle :

Engulfing fail + Engulf

3. Within the **Structure Range** locate your **Hidden Base** in the lower timeframe
4. Finally , Take the Shot





*If you don't go after what you want ,
you'll never have it .*

If you don't ask , the answer is always no .

*If you dont step foward you're always in the same
place .*

"Courage above all things , is the first quality of a Warrior"

BARNEY.

"Signing out"