

# DISCOUNT & PREMIUM



# Discount & Premium

1

Range High & Low

2

Discount & Premium

3

Why?

4

Premium PD Array

5

Discount PD Array

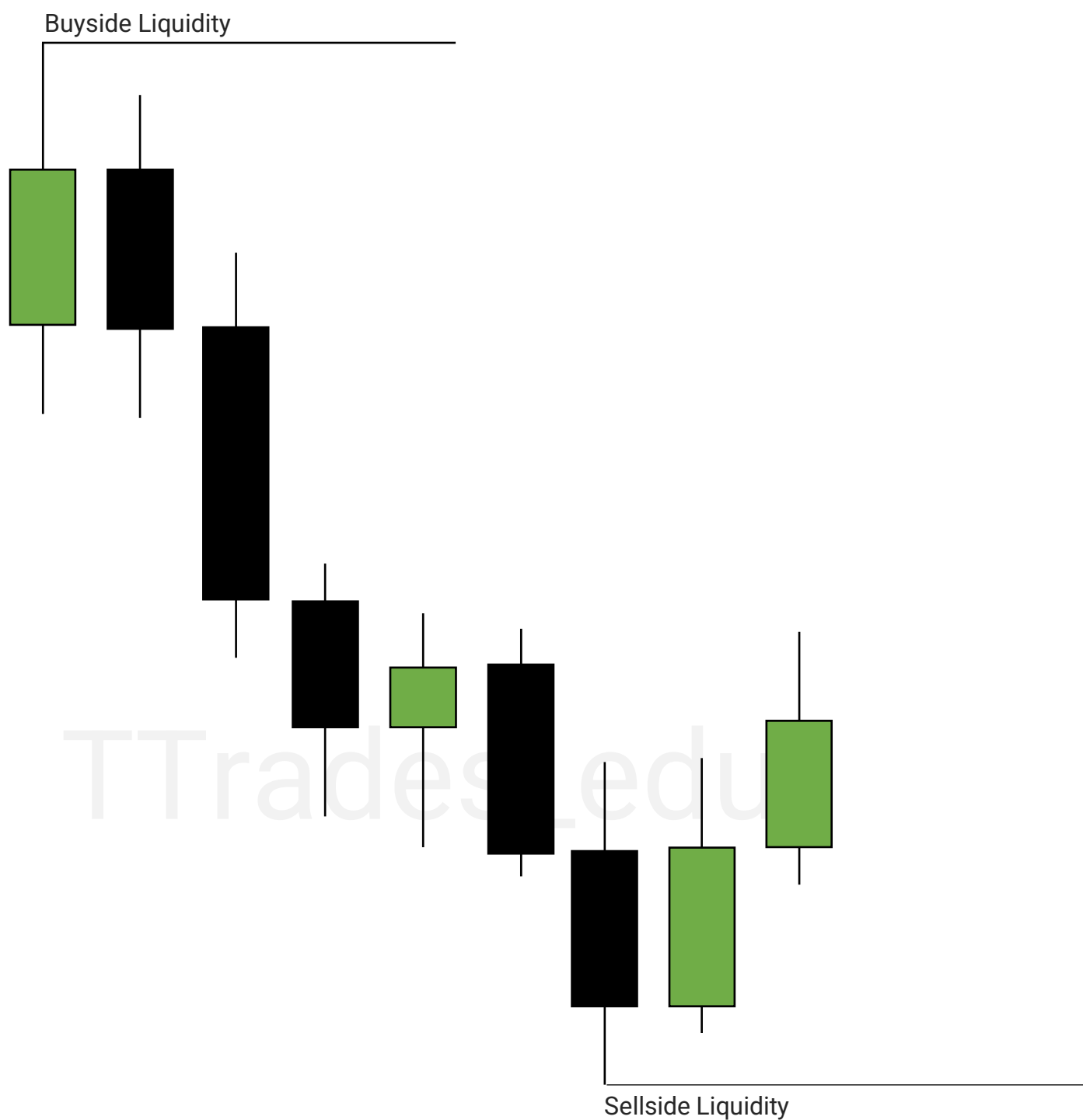


## Range High & Low

Discount and premium is based off the range high to the range low.

An easy way to view a range is to look for where sell side and buy side liquidity is resting.

[Liquidity PDF](#)

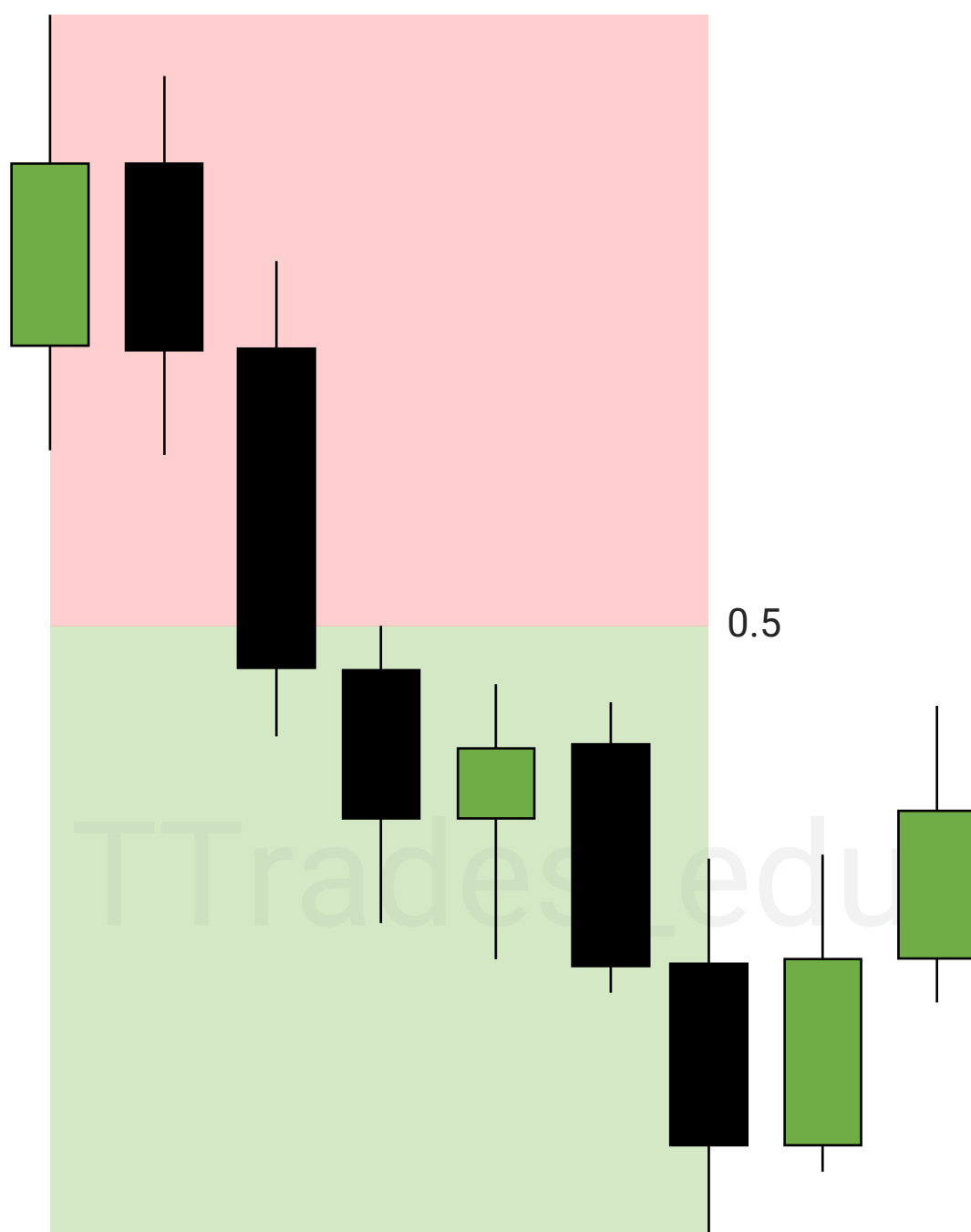


## Discount & Premium

A Gann Box or Fibonacci can be used from the high to the low, marking out the middle of the range, or 0.5.

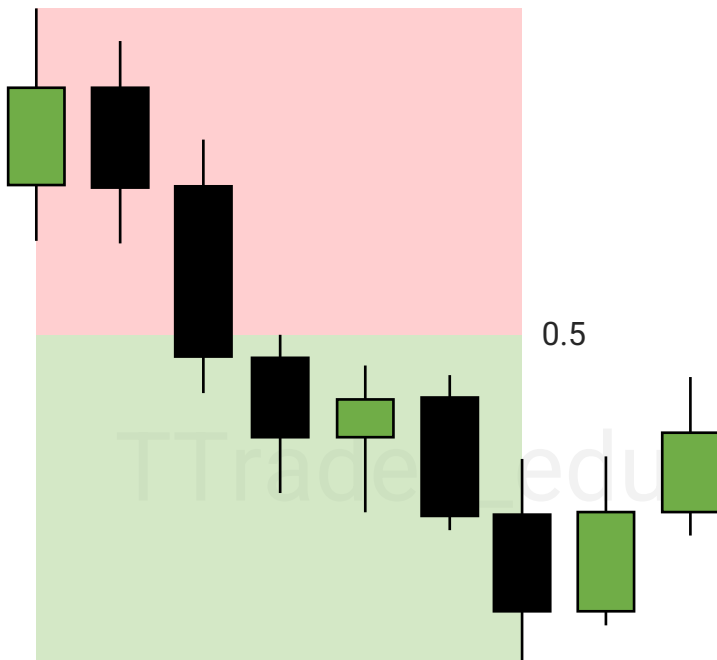
The top 50% or above the 0.5 is considered a **premium**.

The bottom 50% or below the 0.5 is considered a **discount**.

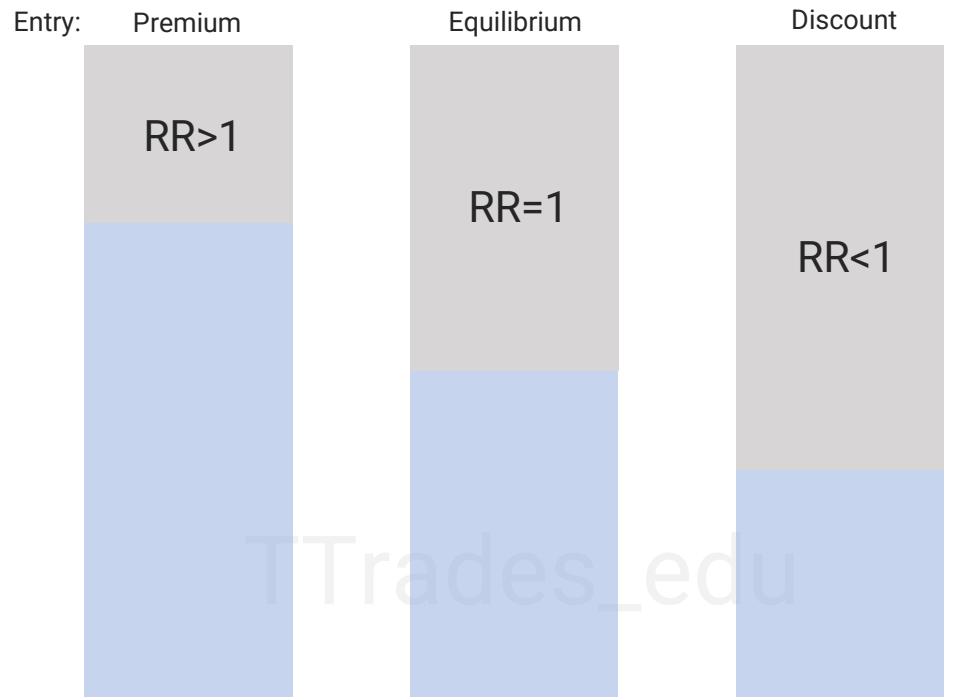


# Why?

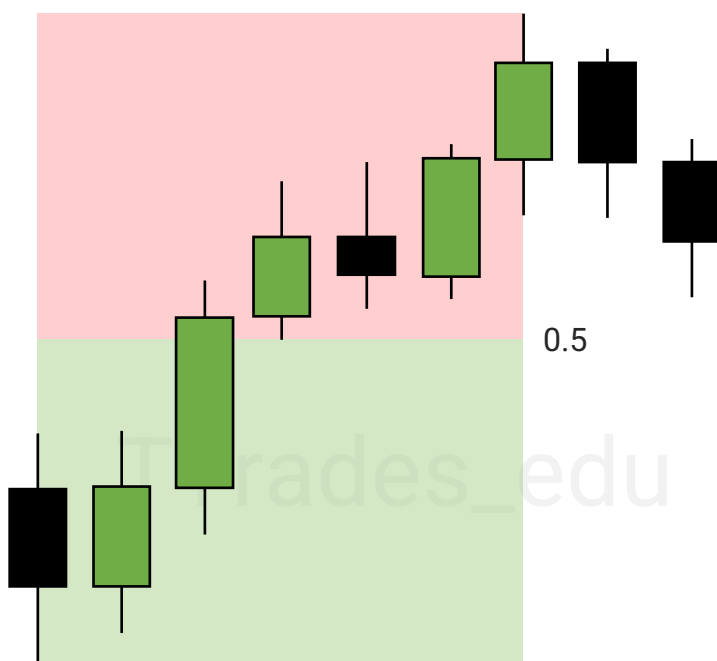
## Short



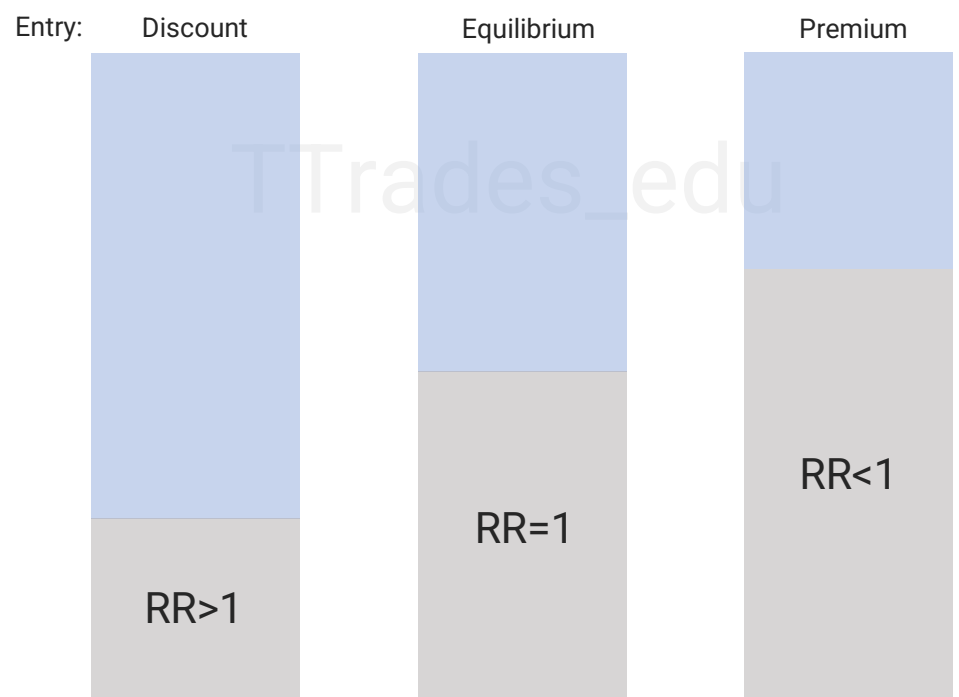
Short positions in **premium** give better reward to risk than a short at equilibrium (0.5) or a short in discount.



## Long

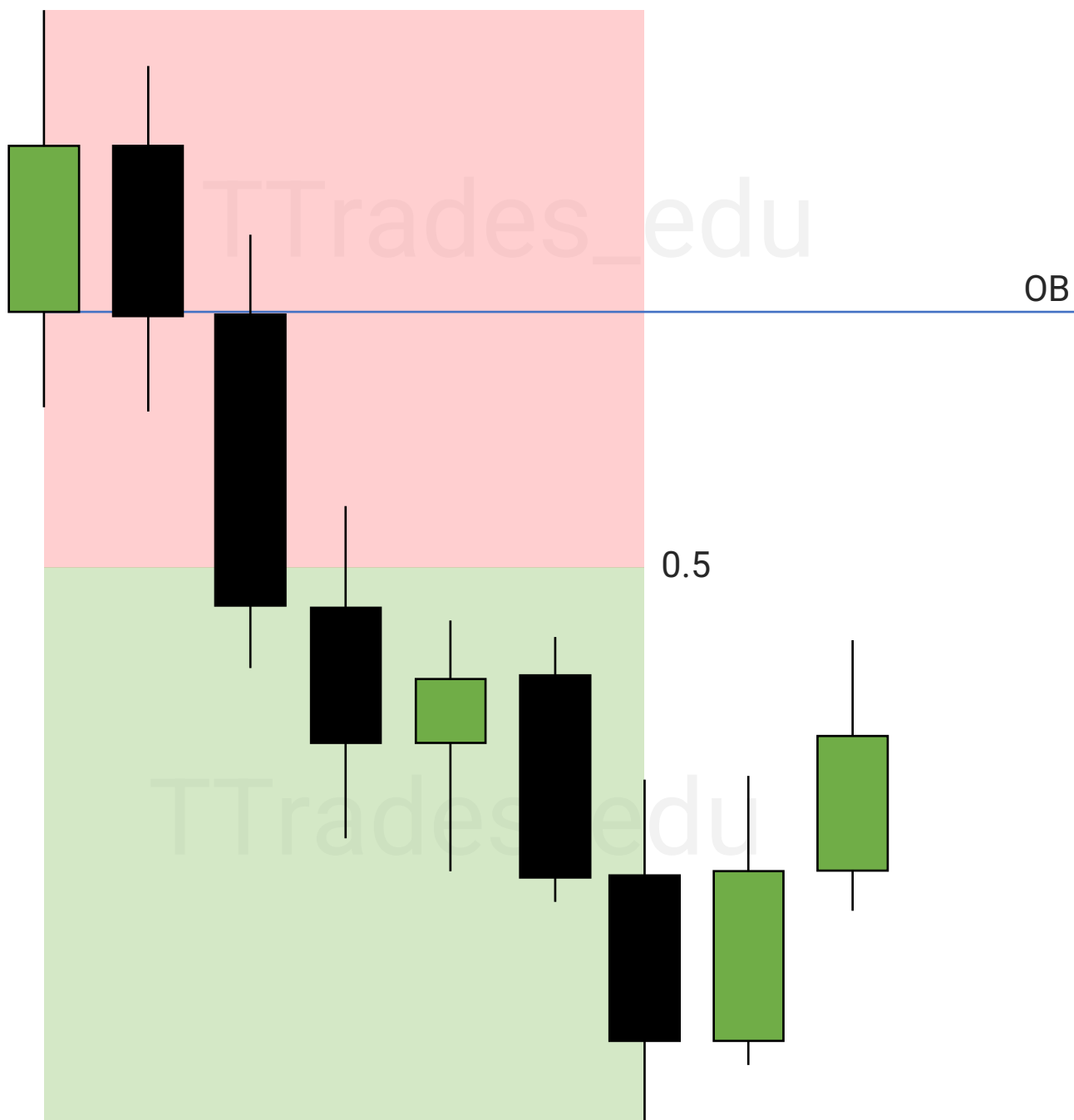


Long positions in **discount** give better reward to risk than a long at equilibrium (0.5) or a long in premium.



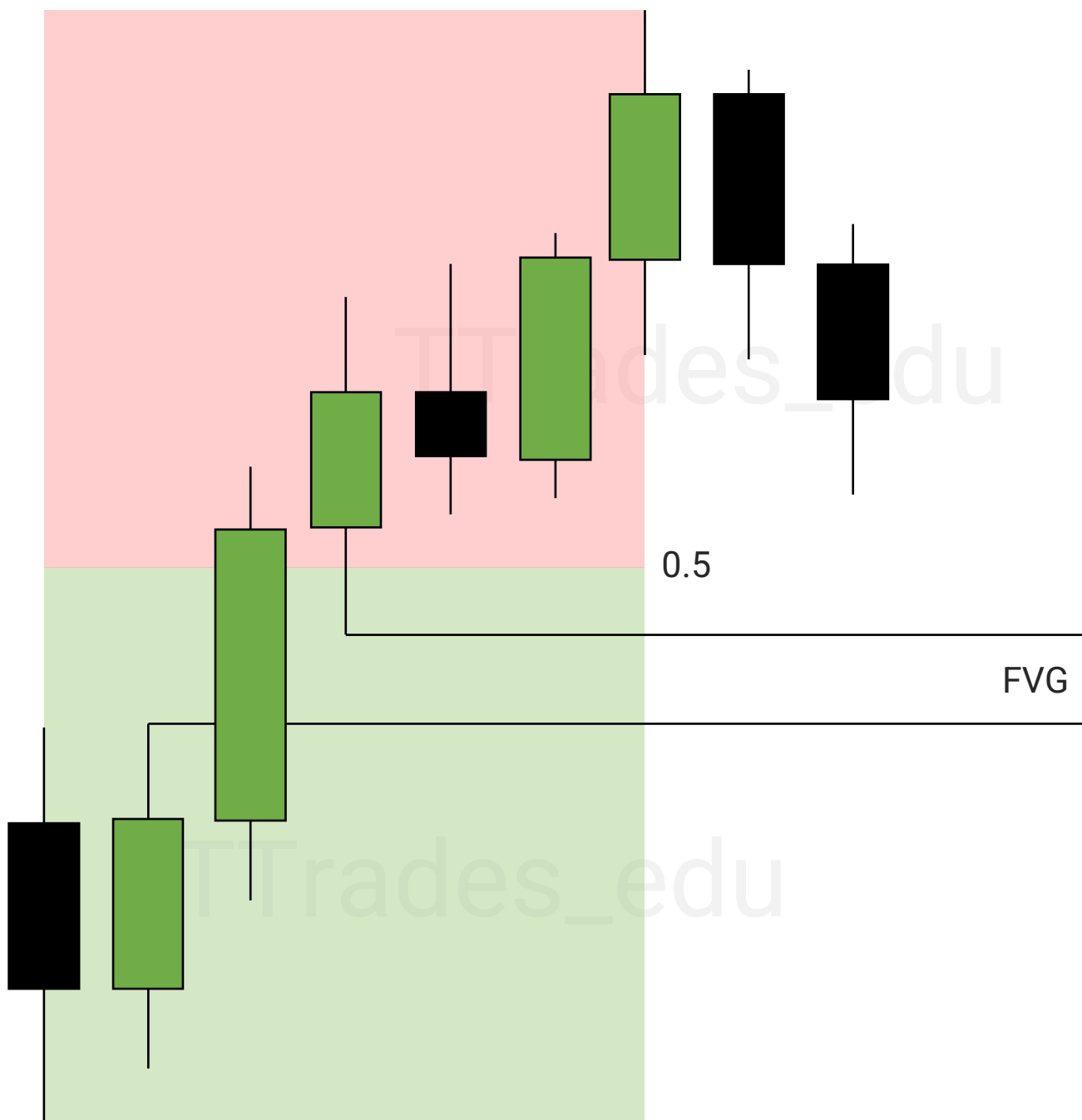
## Premium PD Array

Premium arrays, or PD arrays in a **premium** are used to frame a short setup.



## Discount PD Array

Discount arrays, or PD arrays in a **discount** are used to frame a long setup.



# Resources

[Discount & Premium Video](#)

[YouTube](#)

[Discord](#)

[Twitter](#)

[Affiliate Links](#)

