



# INDUCEMENT CYCLES

Ebook 2.00

# ***INDUCEMENT CYCLES***

---

## **Introduction**

Manipulation in prices in the forex market is a violation of the terms of agreement between two or more parties. It is a form of market manipulation that seeks to benefit one party at the expense of another. Manipulation in the forex market can be done in various ways, such as false rumors, false statements, and price manipulation. It can also be done by trading on inside information or by using high-frequency trading algorithms. It is important to be aware of the potential risks of manipulation in the forexmarket, as it can have serious legal and financial consequences.

TRADING in the financial markets can be a profitable endeavor, but it also carries certain risks. One of these risks is the potential for manipulation of prices by banks and other financial institutions. This type of manipulation can have a significant effect on the markets, as it can cause prices to move in an unnatural direction. In this book, we will explore the different types of manipulation that can occur in the financial markets, and how they can be prevented. We will examine the different techniques used by banks and other financial institutions to manipulate prices, and how TRADERS AND INVESTORS can protect themselves from these practices. By understanding the different types of manipulation, investors AND TRADERS can be better informed and more aware of potential risks in the financial markets.

## **INDEX:**

**-INDUCEMENT MARKET STRUCTURE**

**\*PHASE 1 LOGIQUE**

**\*PHASE 2 LOGIQUE**

**\*FAKE PHASE LOGIQUE**

**\*PHASE 4 LOGIQUE**

**-MONEY TRANSFER TIME AND MECHANICAL**

## **MARKET**

*The basis of the trade to buy cheap and sell expensive is to purchase products or anything at a lower cost than their market value and then resell them at a higher price. This is a common strategy employed by many businesses, as it allows them to make a profit on the difference between the purchase and sale prices. By buying products at a lower cost than they are worth, businesses can maximize their profits. This strategy can be used in any market, including stocks, commodities, real estate, and digital assets.*

*The trade buy cheap and sell expensive is a fundamental concept in trading, investment, and entrepreneurship. It is based on the idea of buying low and selling high, which is a basic principle of economics. This strategy involves finding undervalued assets and then reselling them at a higher price, thus making a profit. This strategy can be used to both generate income and grow capital. By buying low and selling high, investors can increase their returns and build wealth over time. However, it is important to remember that buying low and selling high is not a guarantee of success. The success of this strategy depends on the investor's knowledge and ability to identify undervalued assets and then resell them at the right time.*

**THAT WHY WE NEED STRUCTURE TO KNOW IF THE PRICE CHEAP OR EXPENSIVE**

**FORGET THE DIRECTION OR U NEED TO KNOW THE DIRECTION TO TRADE THAT DISTRACT YOUR FOCUS**

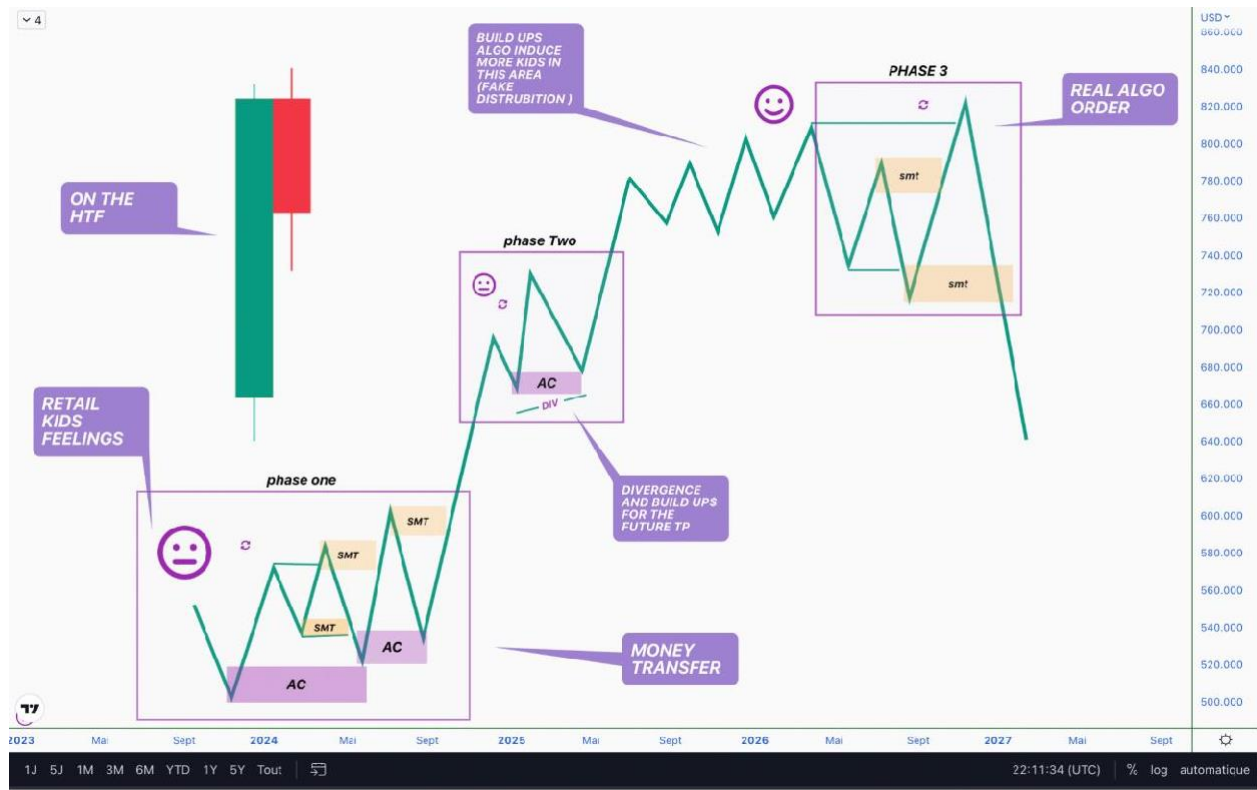
*Distracting your focus in trading can lead to making poor decisions and can be detrimental to your success. To minimize distractions, it is important to create a trading plan and stick to it. This plan should include setting specific goals, identifying risk levels, and determining when to enter and exit trades.*

*Additionally, it is important to limit the amount of time you spend on the markets and avoid making trades when feeling emotional. Additionally, it is important to take regular breaks and step away from the markets when you feel overwhelmed or are not able to focus. Finally, it is important to stay informed on the markets By creating and following a trading plan, you can minimize distractions and increase your chances of success.*

*It is not necessary to know the direction of the markets in order to be successful in INTRADAY TRADING. While having some knowledge of the markets and their direction can be helpful, it is not essential. Successful INTRADAY trading and more on understanding the risks and rewards associated with different trades, and having a strategy for managing those risks. Additionally, it is important to have an understanding of TIME and technical aspects of the markets.*



## MARKET PHASES



### PHASE ONE OF STRUCTURE MONEY TRANSFER

### PHASE TWO PROTECTING THE ORDERS

### FAKE REVERSAL

### PHASE THREE TRAPPING MORE PPL



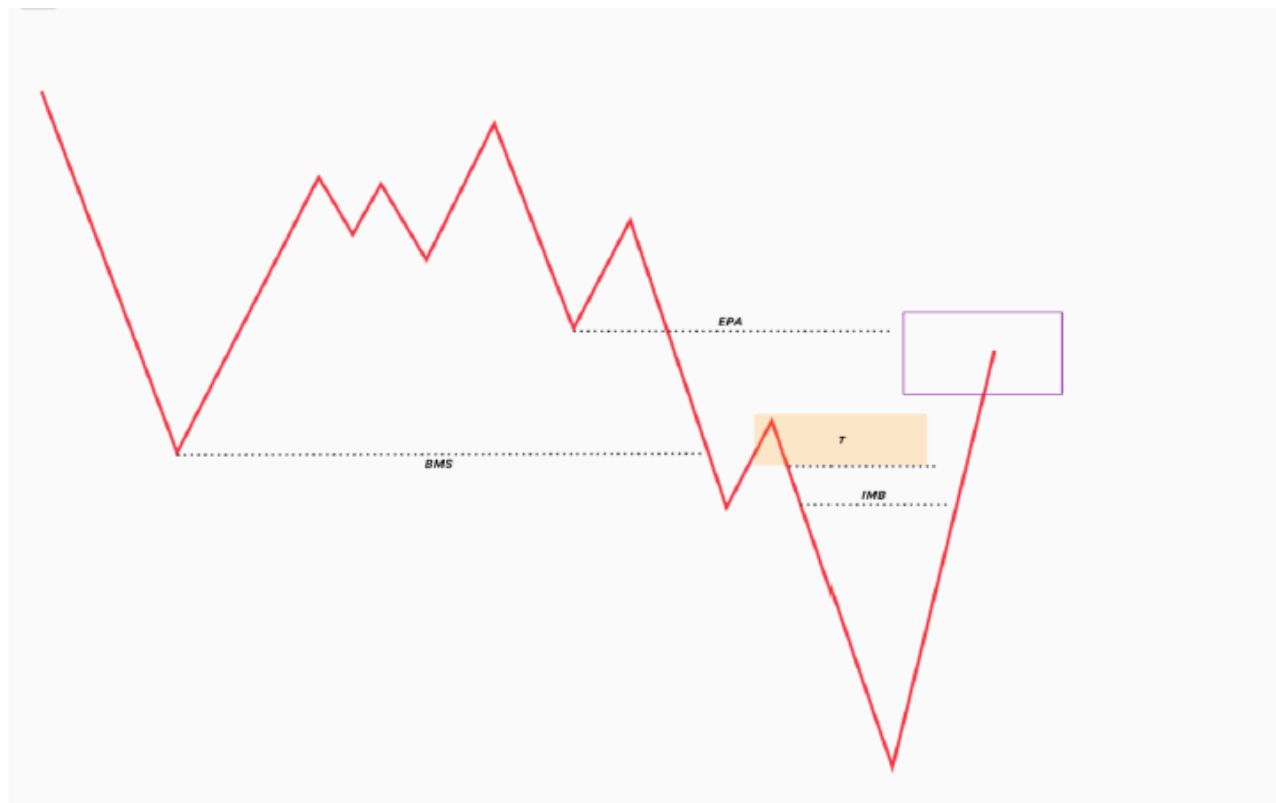


**MAJOR TRAP + MEDIUM/MINOR TRAP + CHC WITH IMB = BETWEEN MONEY TRANSFER**



## **EXTERNAL TRAP**

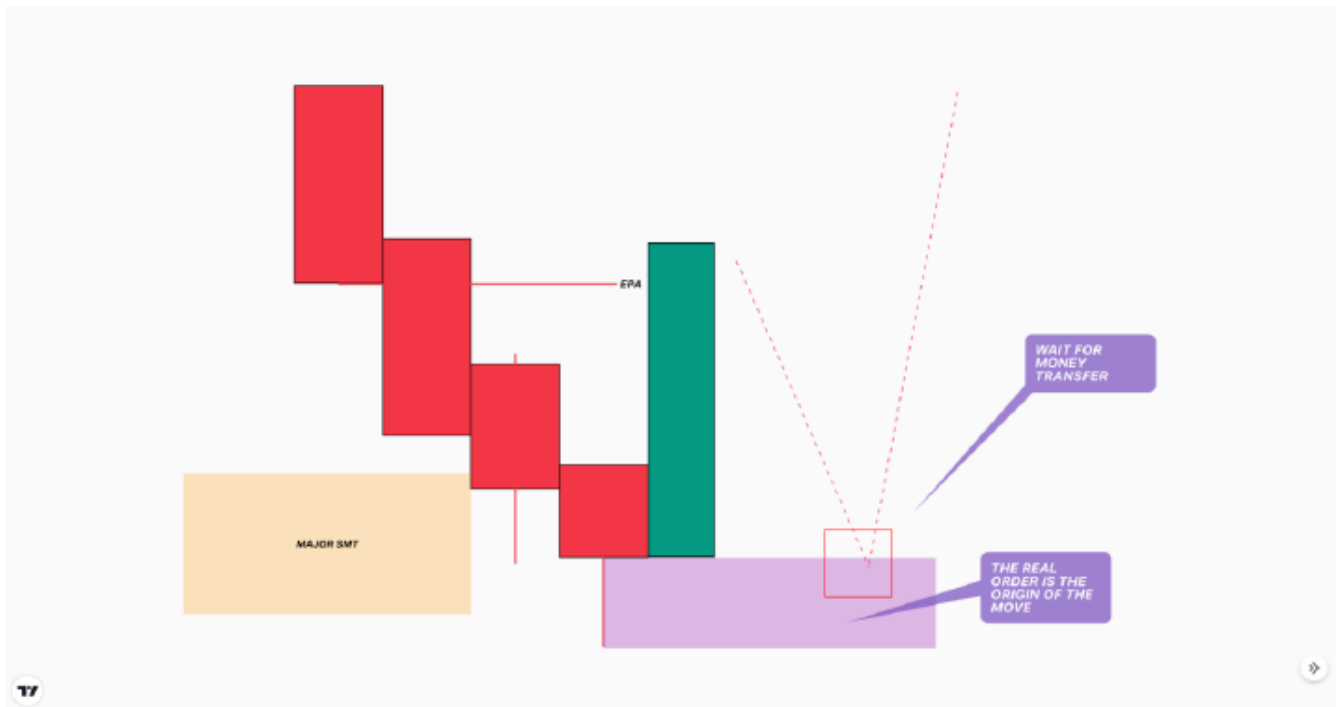
**THE FIRST THING WE WILL DO, IS WAIT FOR A MAJOR TRAP IN THE MARKET. THEN WE WILL CHANGE THE TIME FRAME TO LTF DIRECTLY.**



## **MAJOR INTERNAL TRAP**



## ENTRY MODELS



### TYPE 1

LTF entry confirmation.

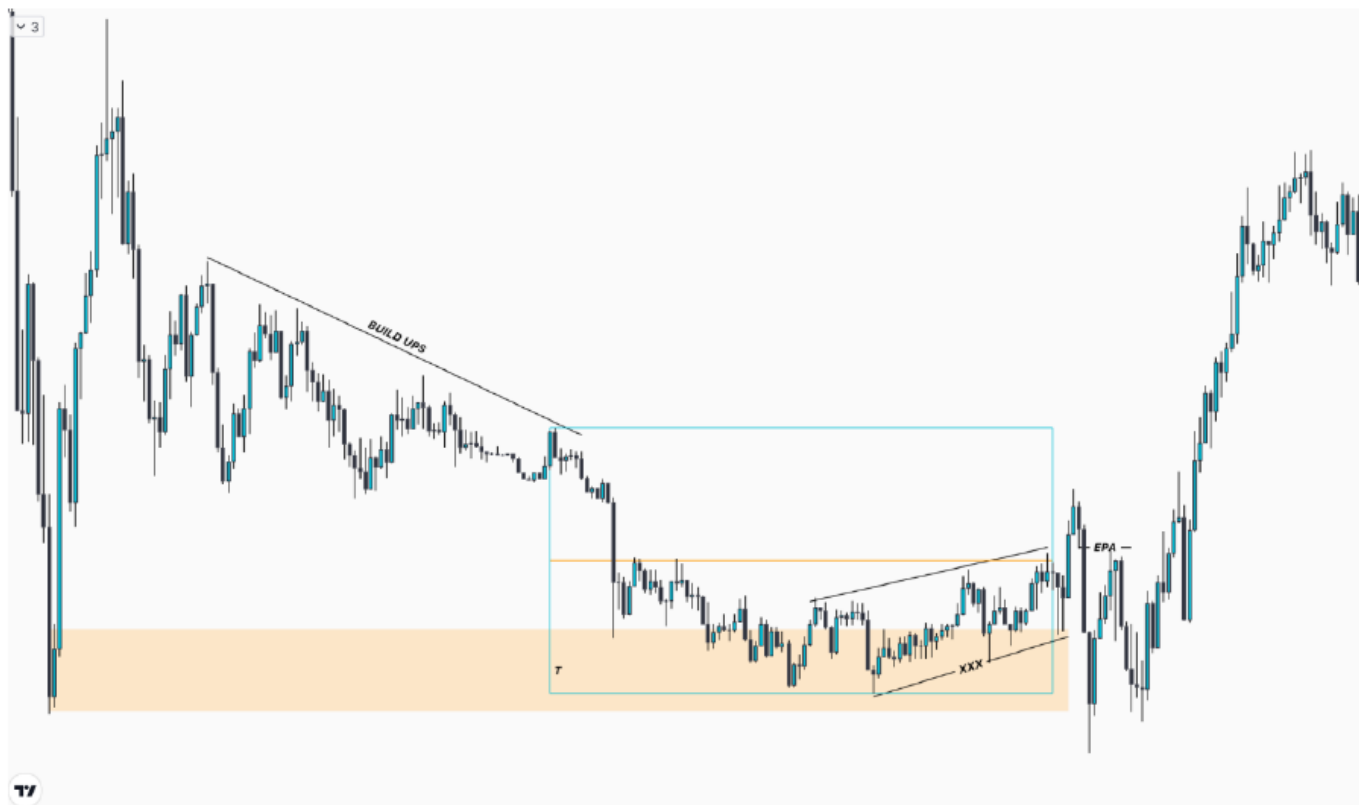
The order that cause the EPA is the real order. This Method is another type of Shift or Change of character.



## ***TYPE 2***

Entry with Limit Order.

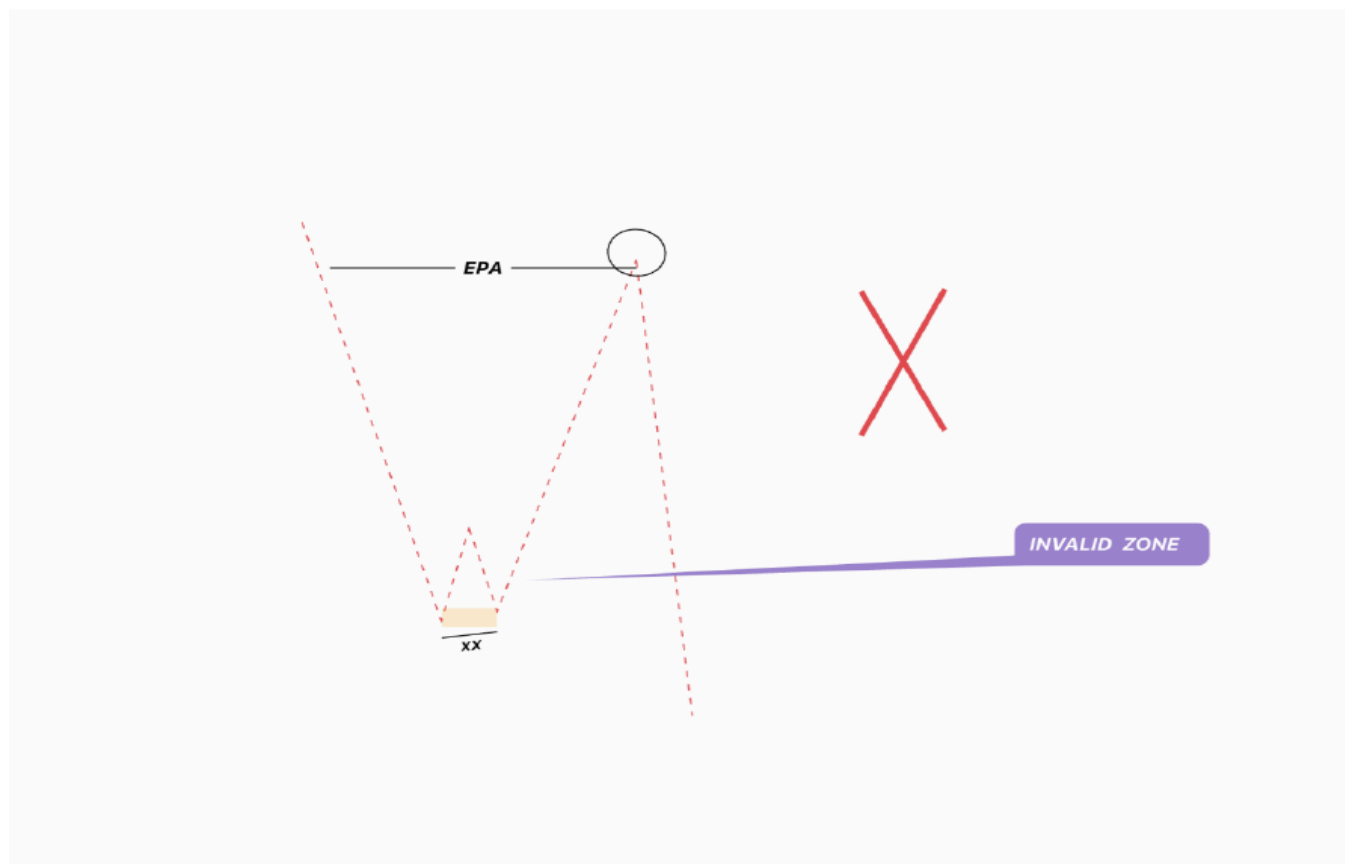
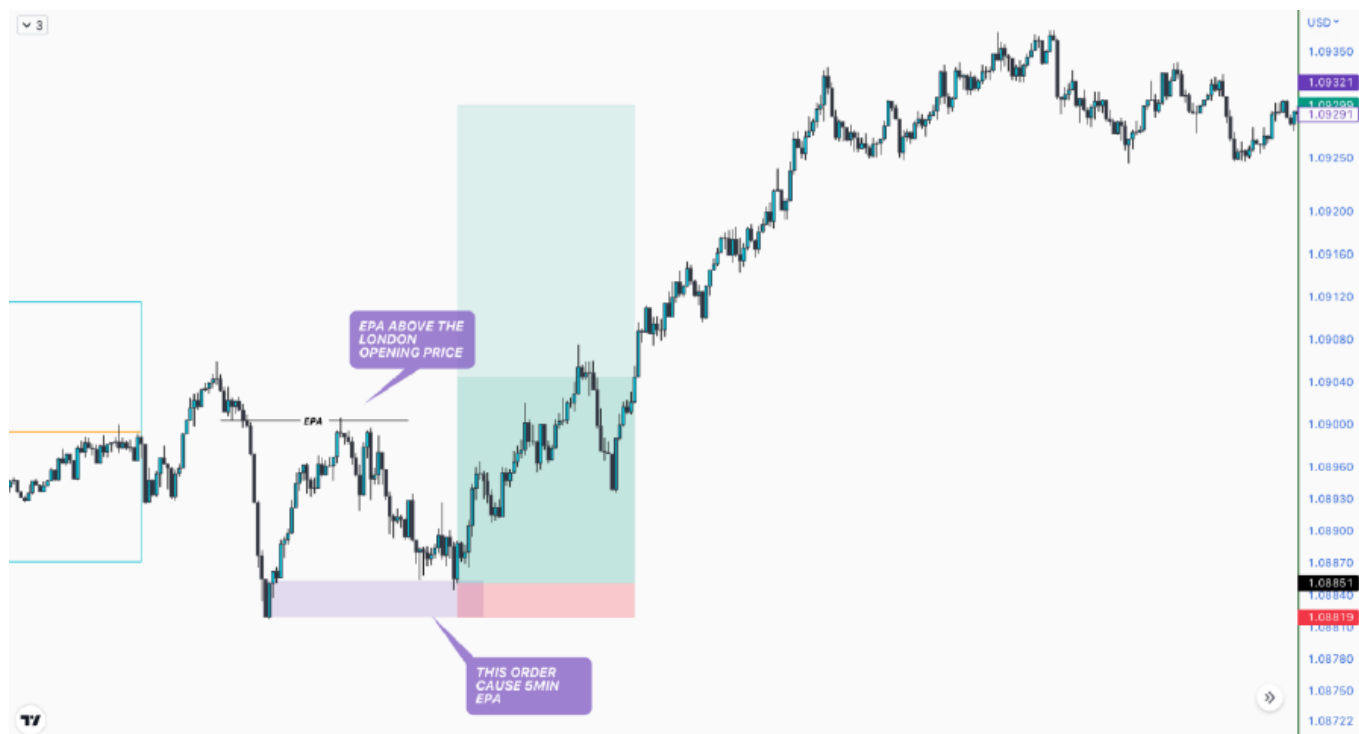
The real order is in the 90m cycle high, fake one is below the 90min cycle opening price.

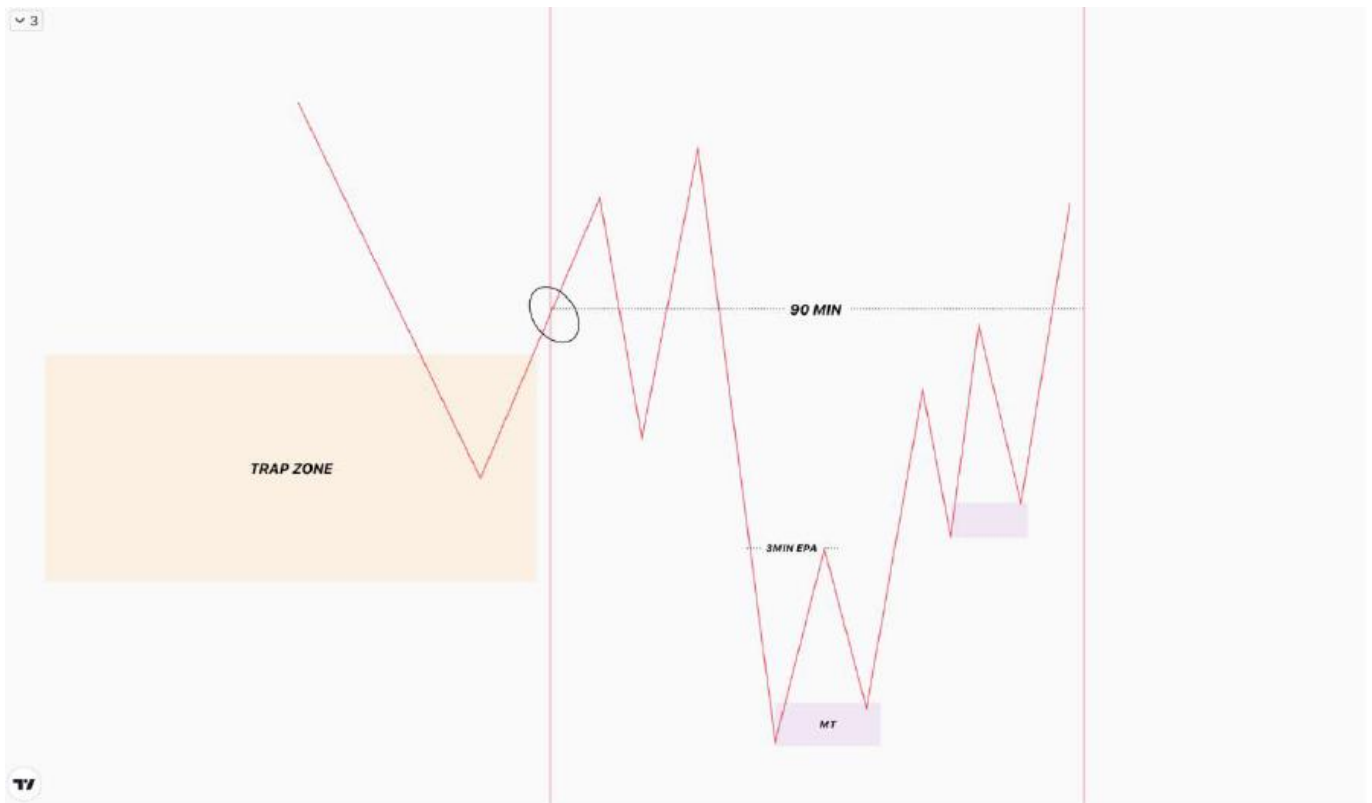
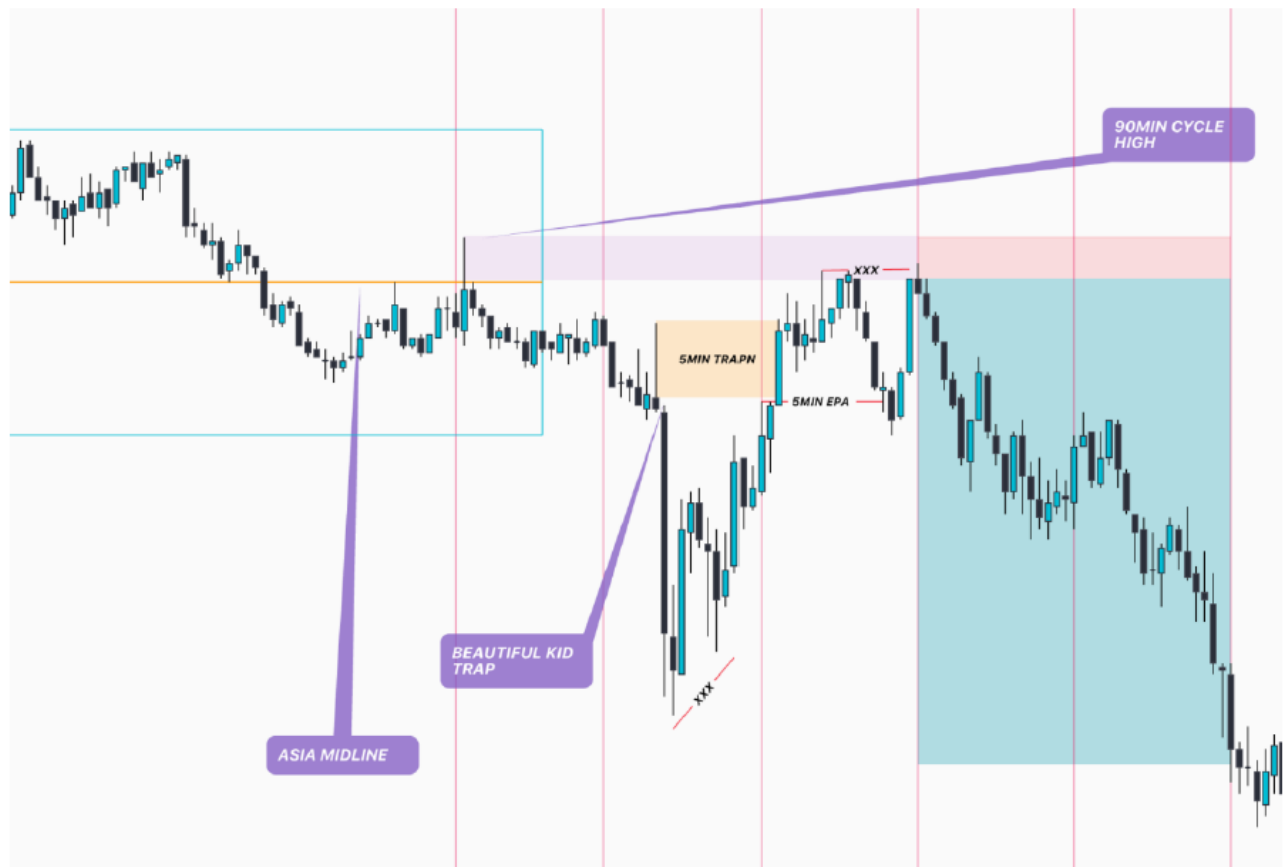


3MIN

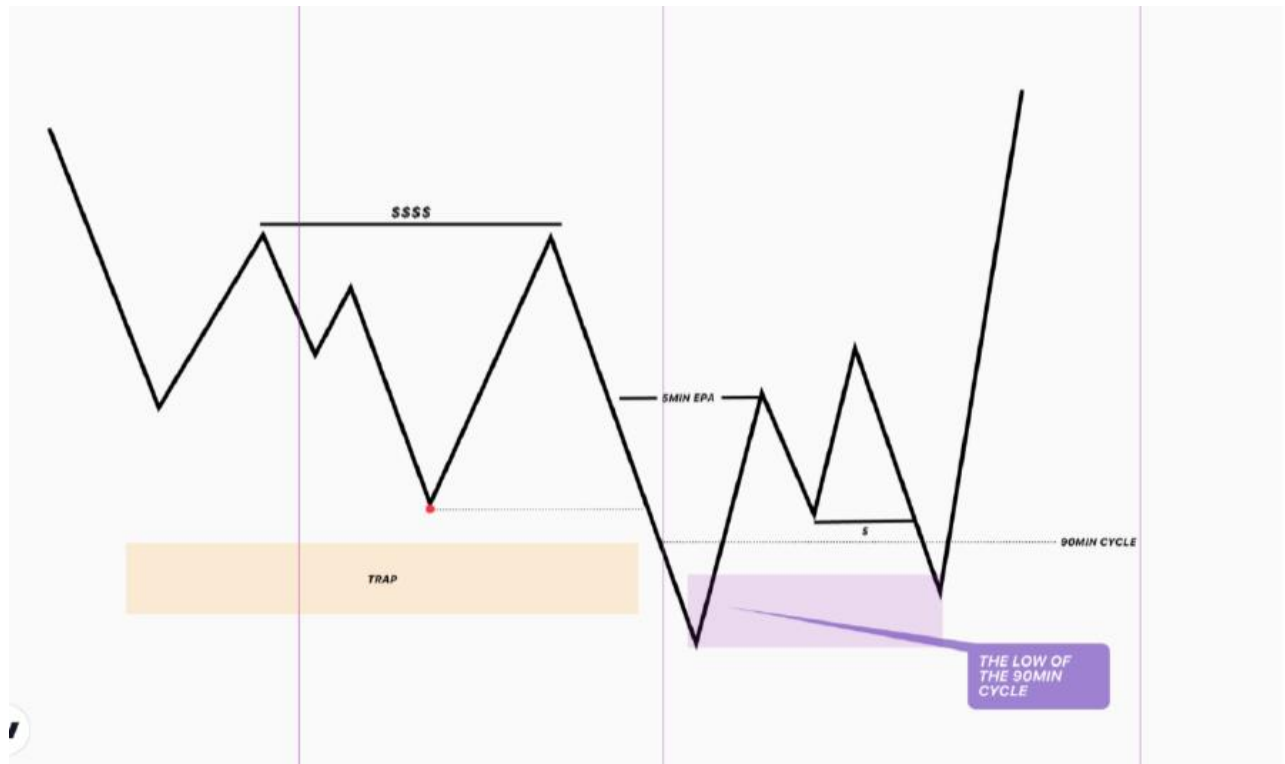
NOTE:

When you try to find the order that cause the EPA, start from HTF like 5m, then 3, 2m, and 1m. Remember that TRAPS are everywhere.

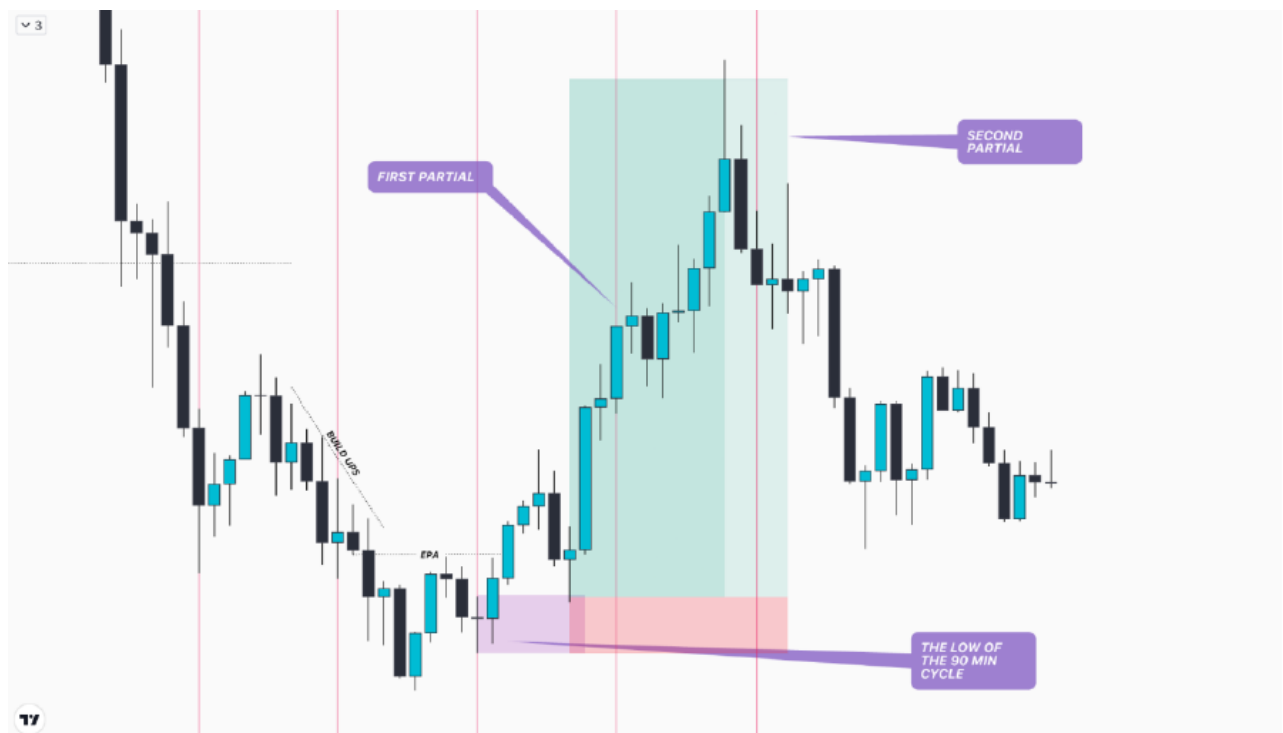




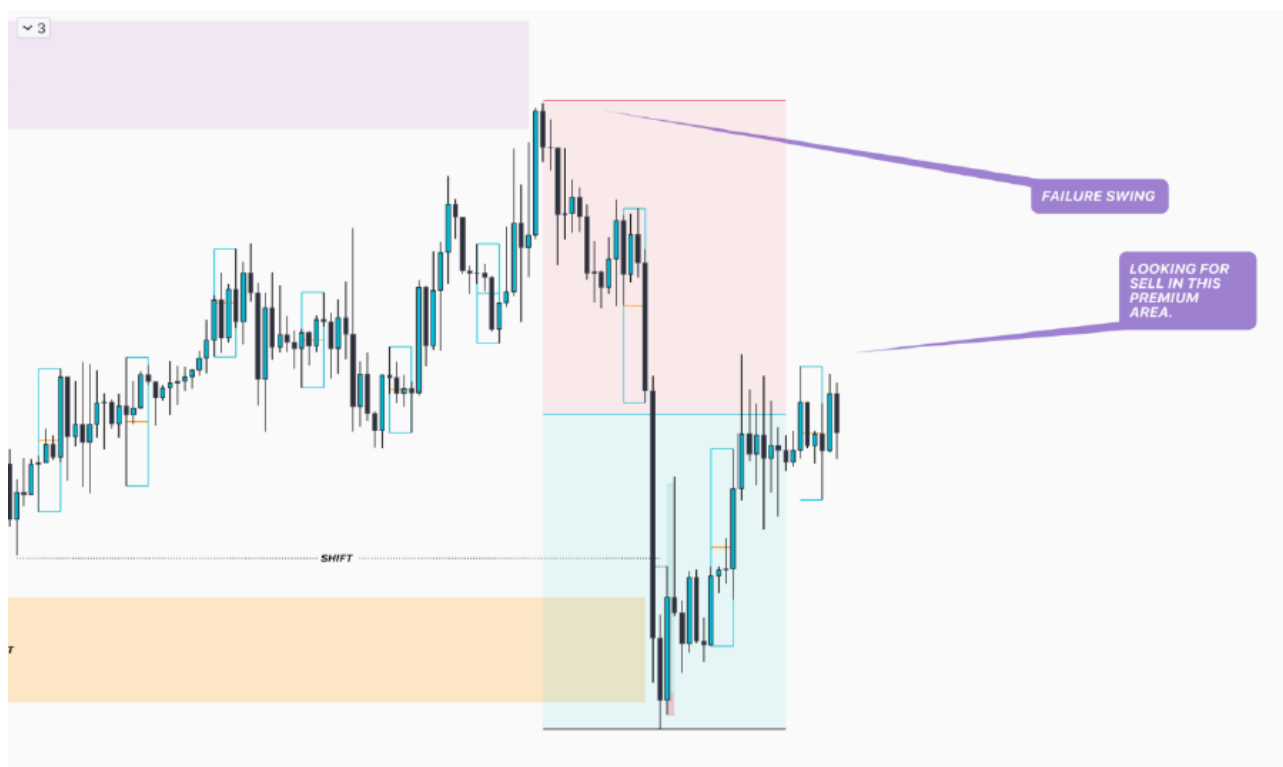
## ENTRY MODEL



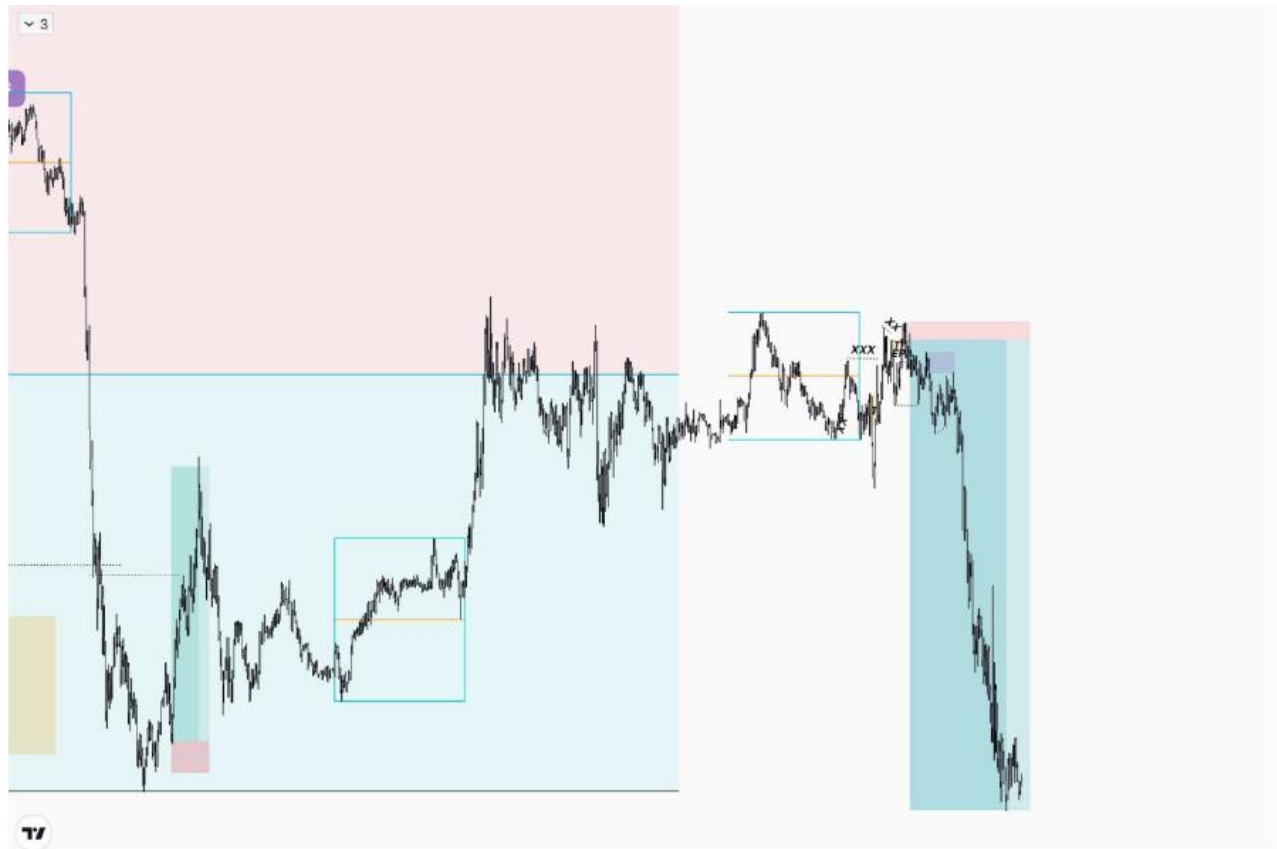
4H



**3M**



**4H**



3M

**I TARGET THE EXTERNAL LOW**

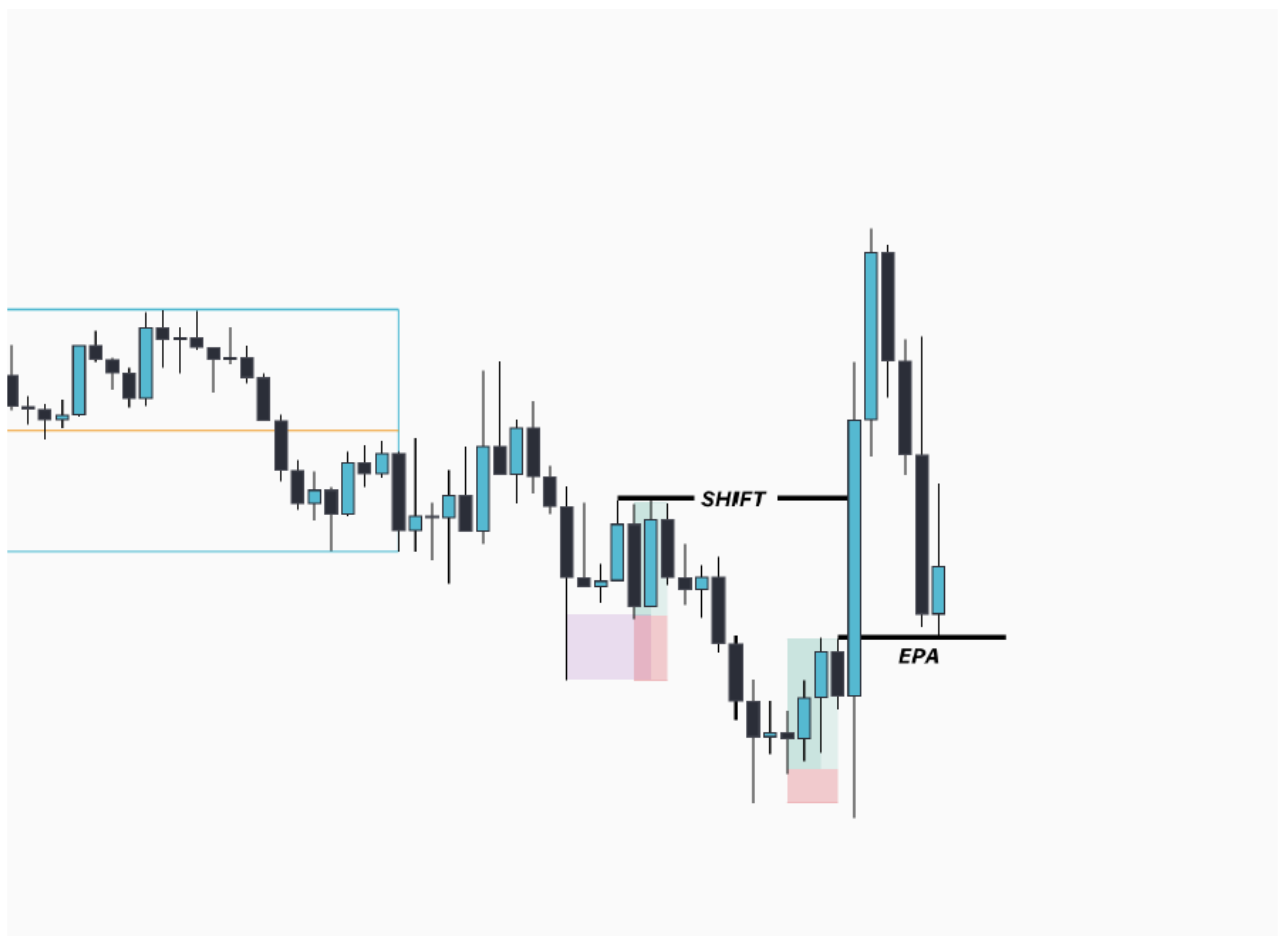


1H

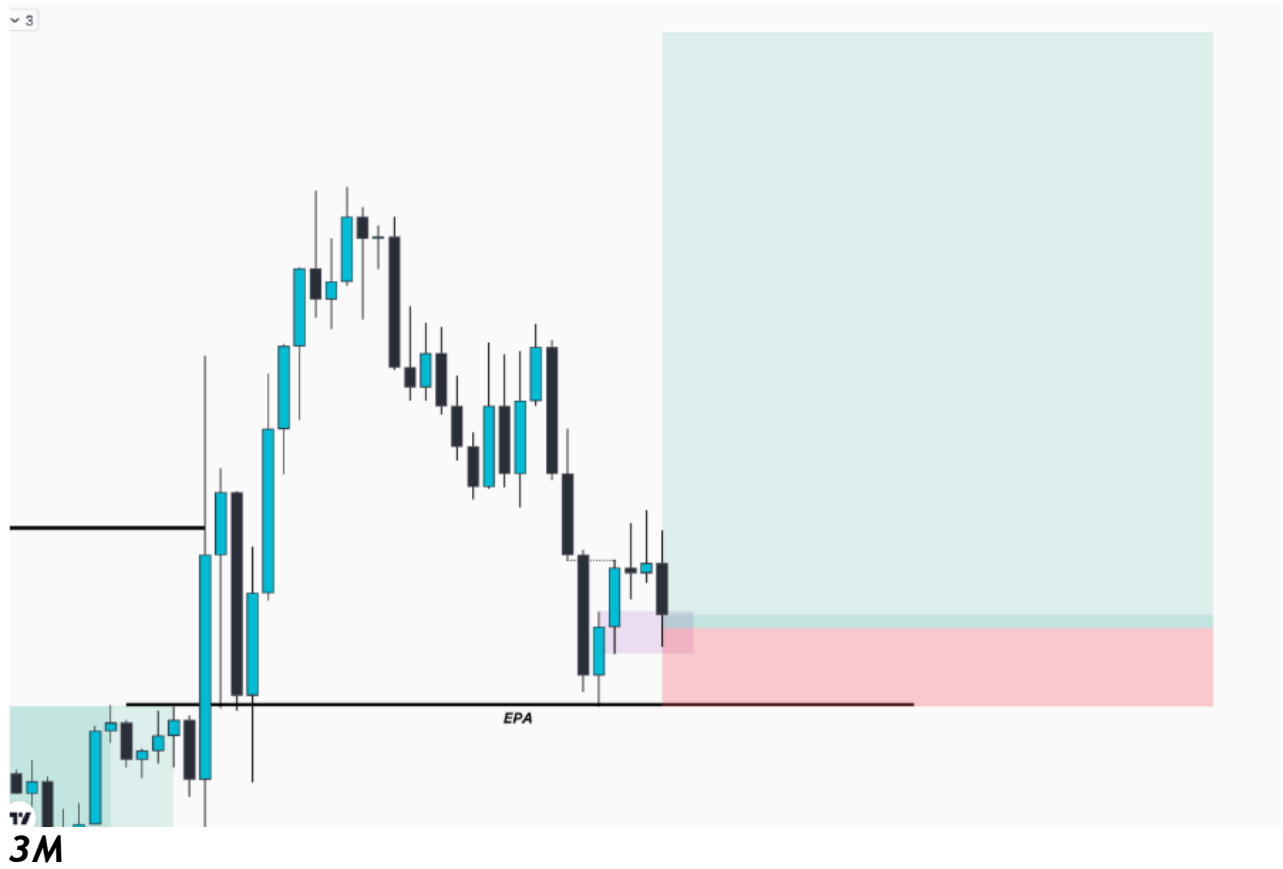


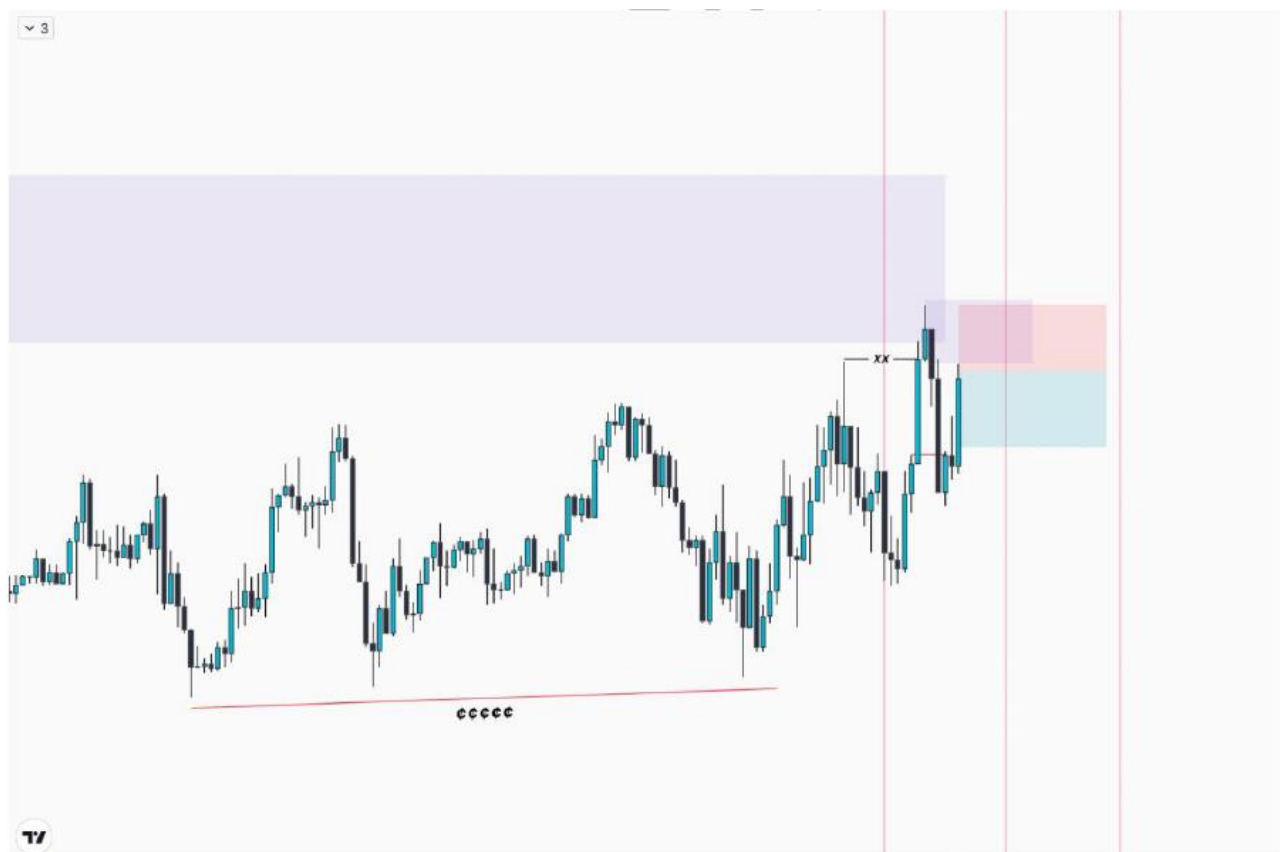
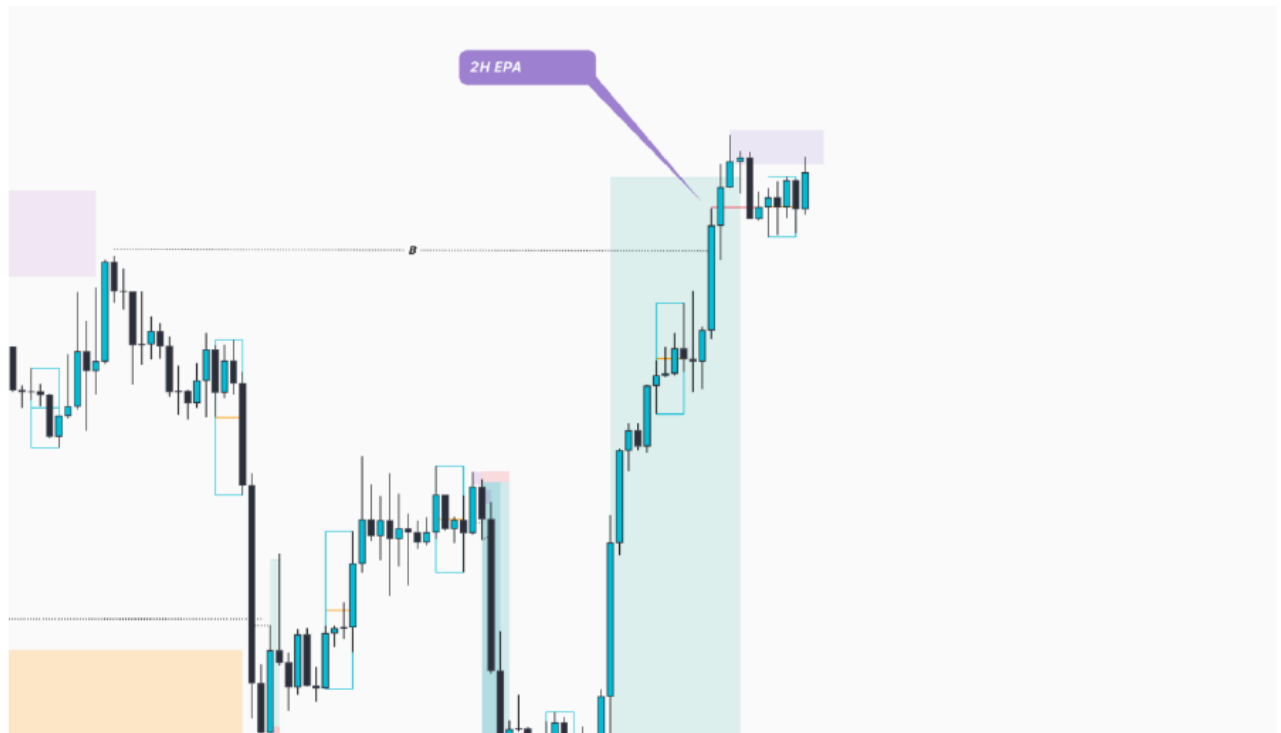


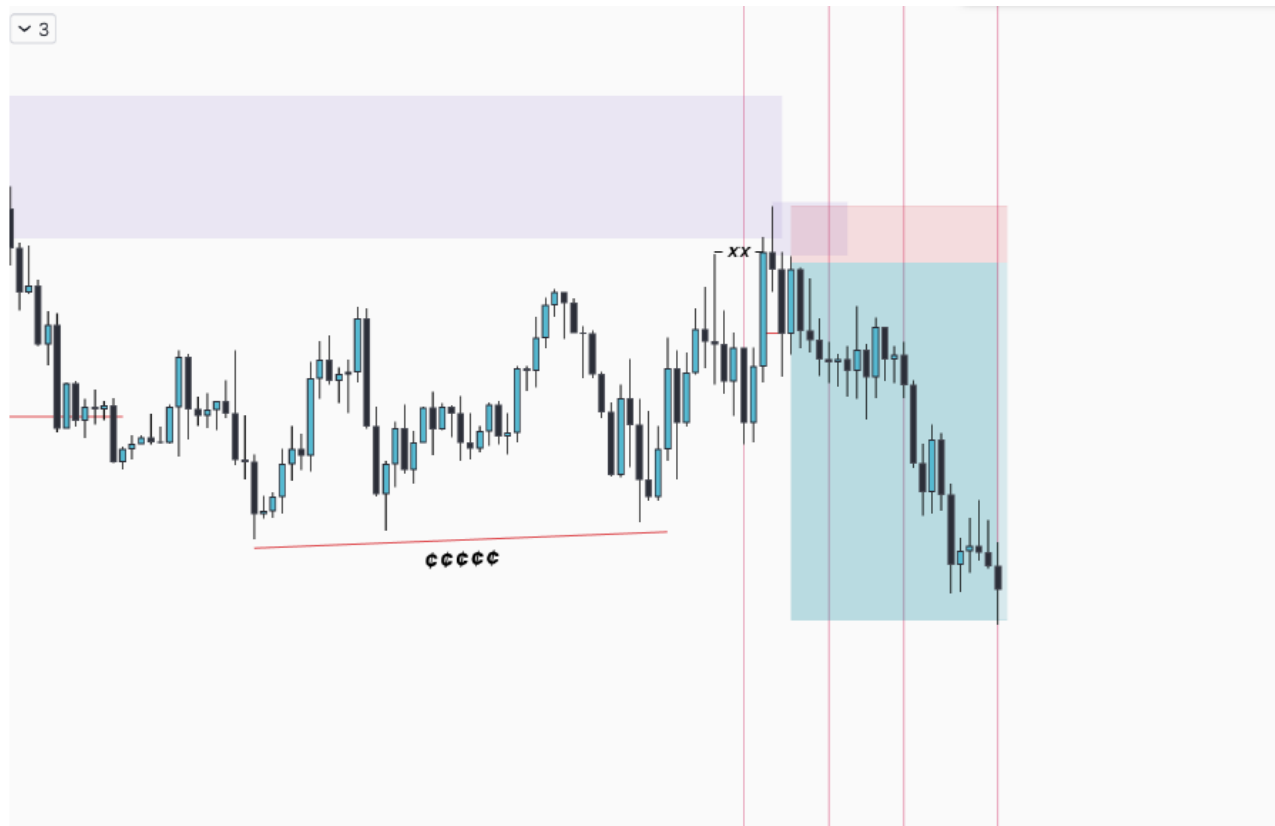
**3M**



**15M**







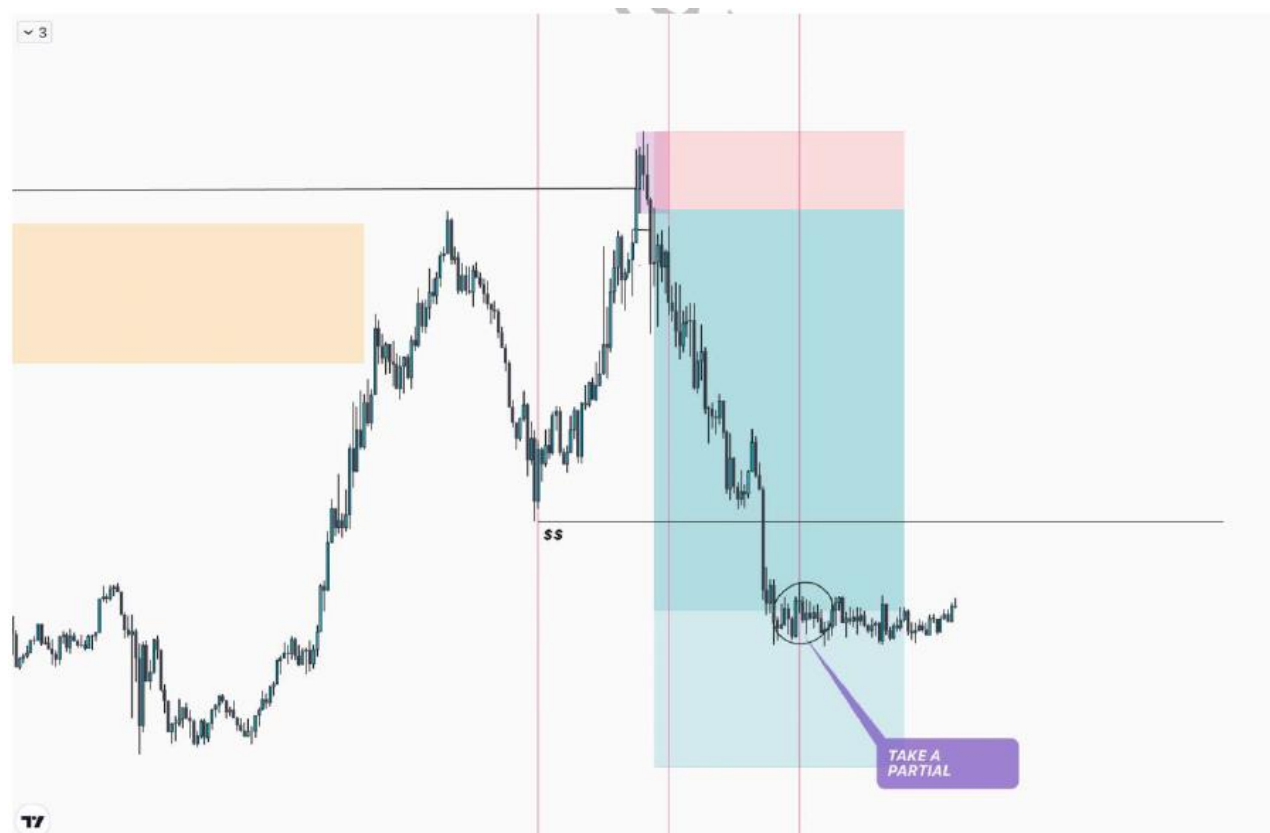
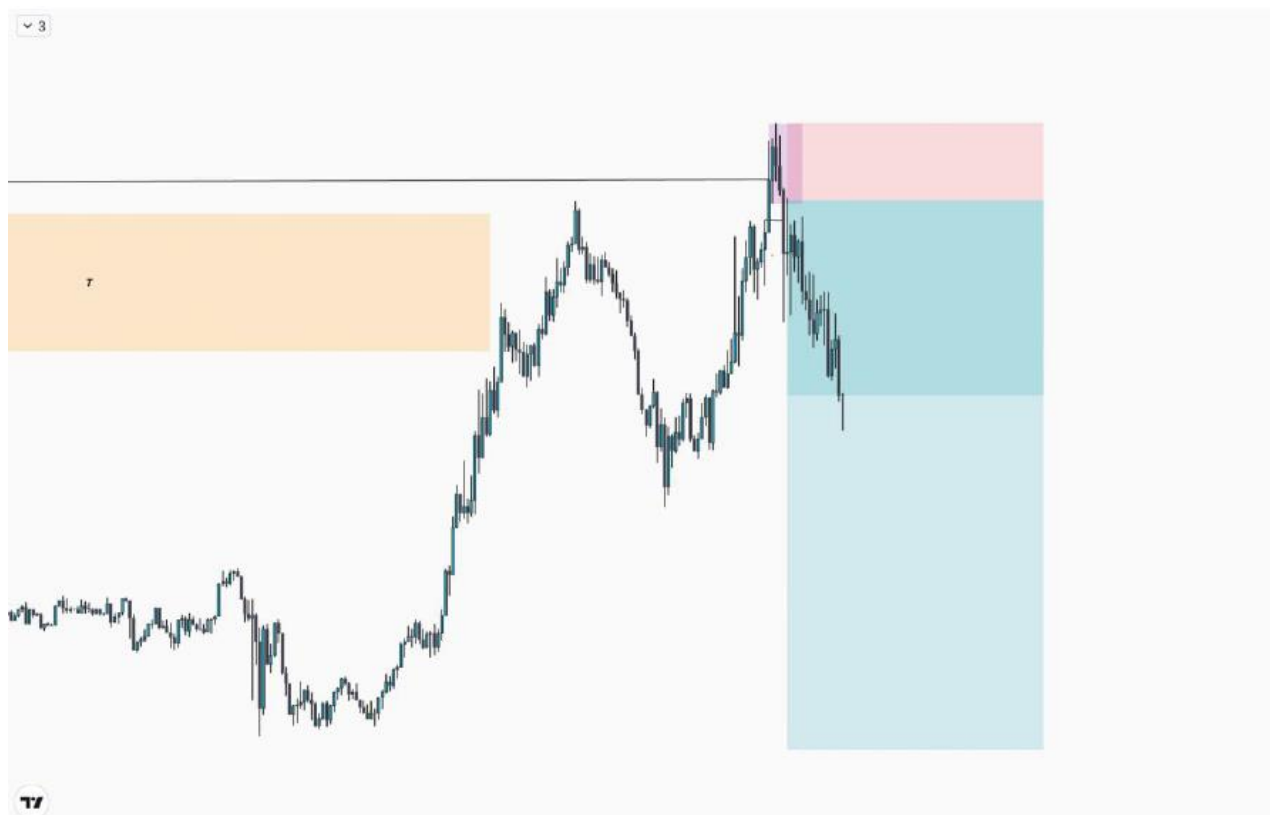
**3M**



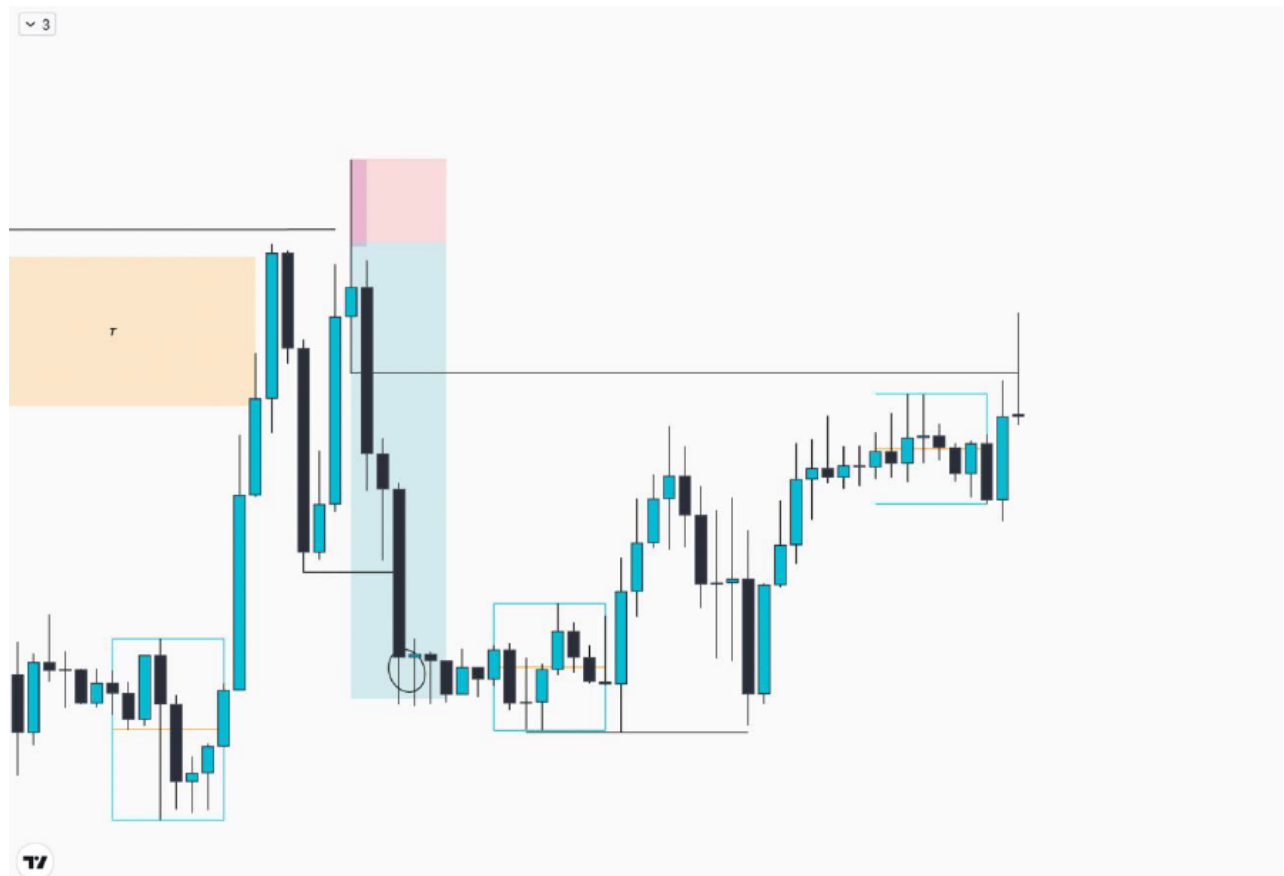
**4H**

As I previously mentioned, the market is like a war, and I would advise the trader not to enter into it without sufficient knowledge. My role here is to provide you with the rules for taking a trade, and not to explain each move or how to trade in this particular market. If you are trading in a ranging market, it is normal to take a risk and win. However, it is wise to wait for a clear vision before engaging in a full-fledged war. Therefore, using the knowledge we have, we should focus on a clear market structure to make it easier for you to understand. Personally, I don't need to work with market structure, but you do. As a beginner or learner, you need to use this simple method that I am providing you with.

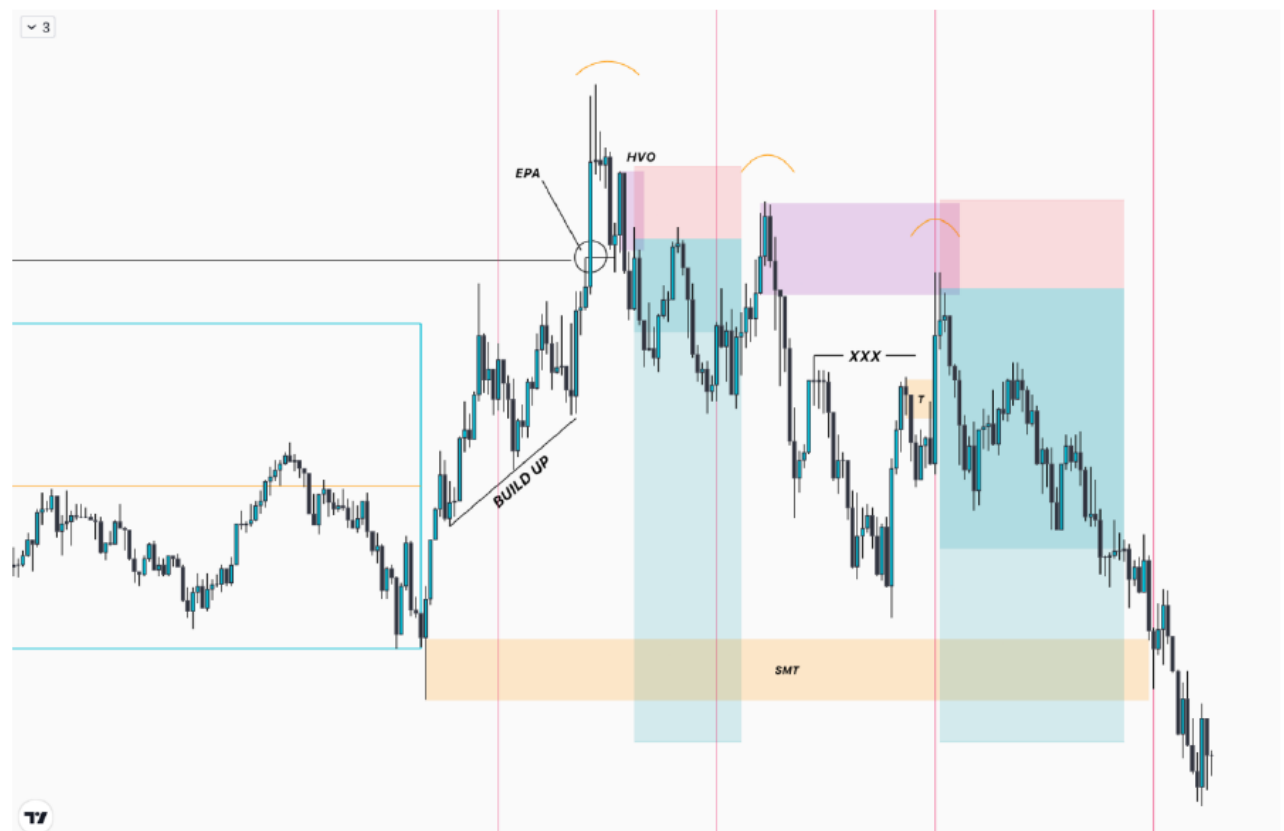




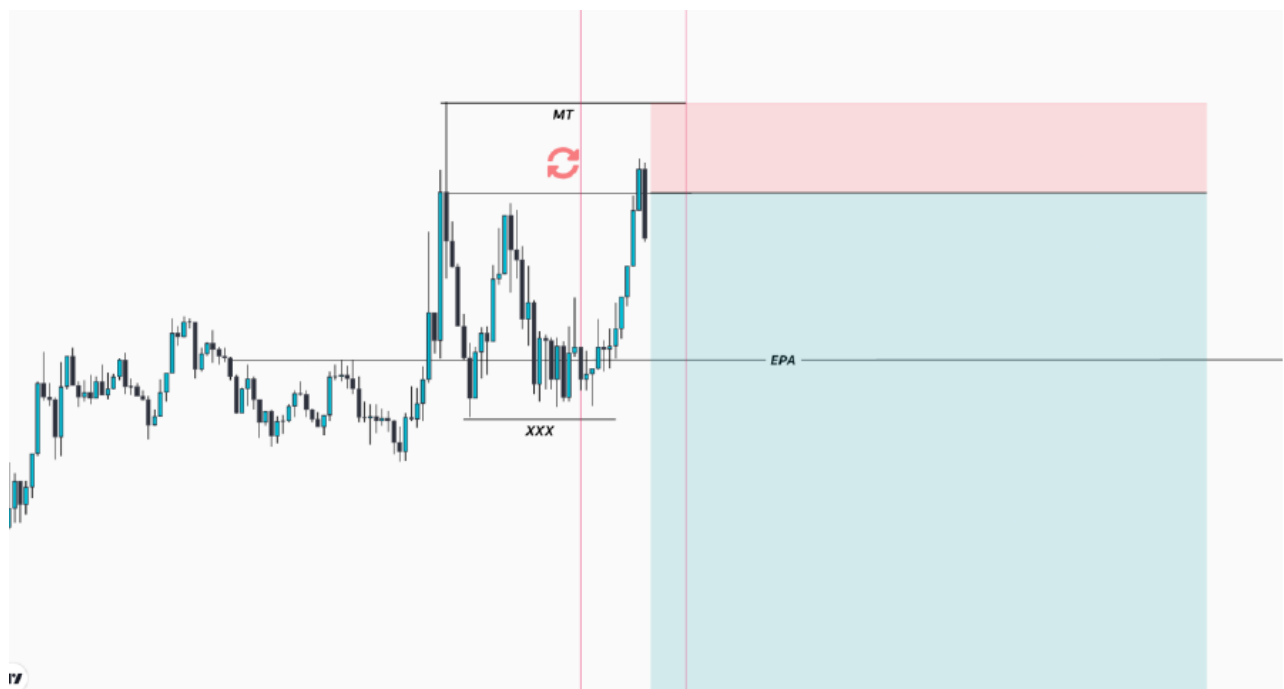
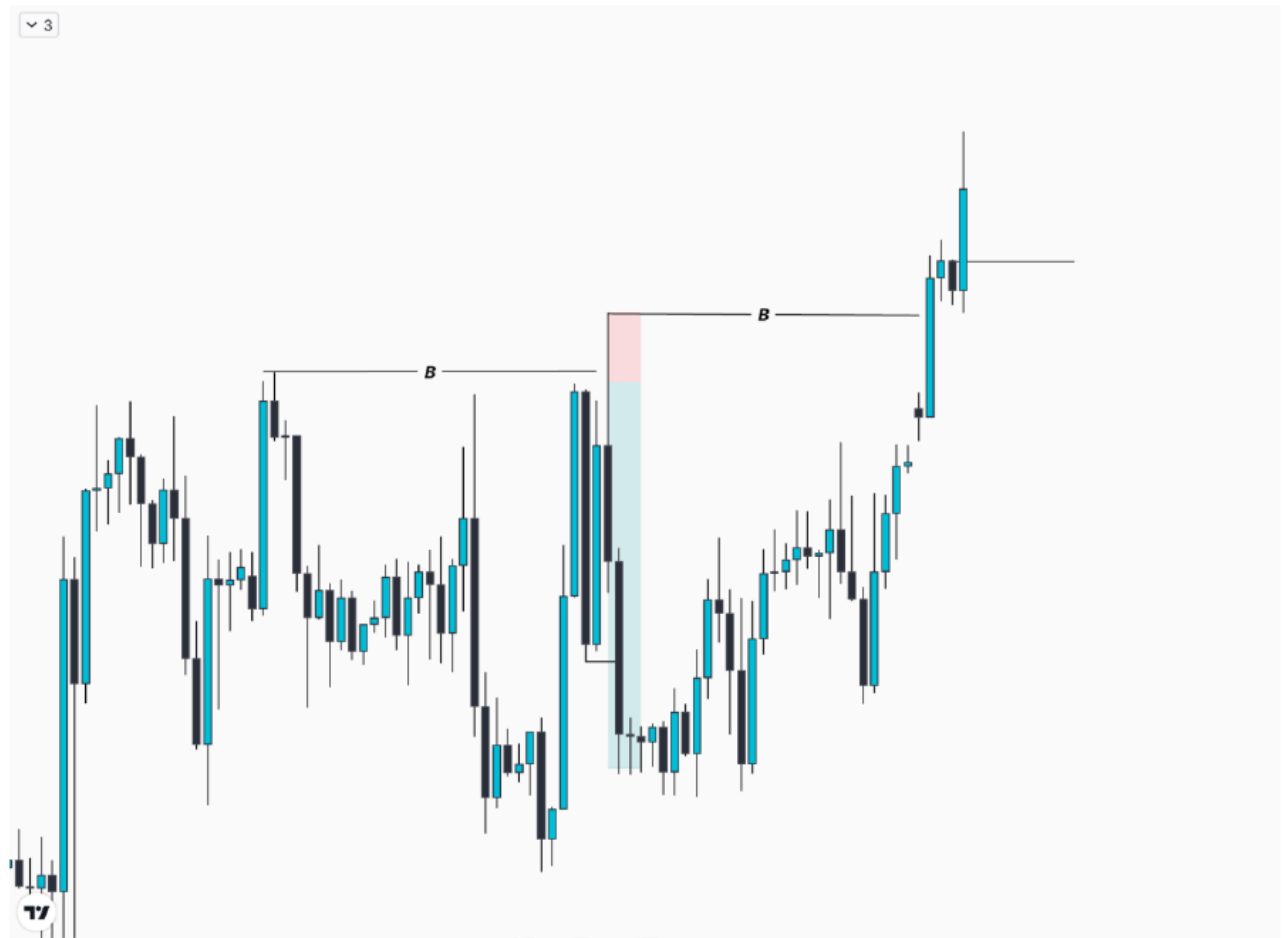
2M



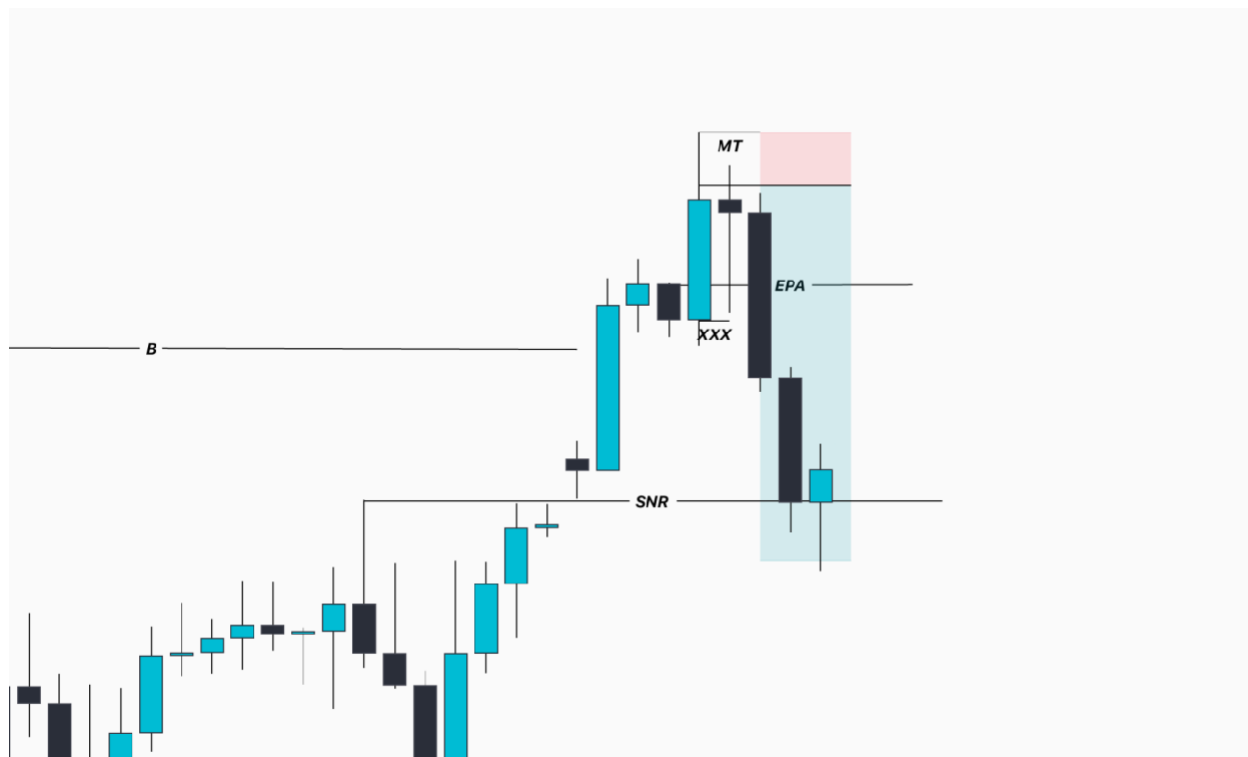
H1



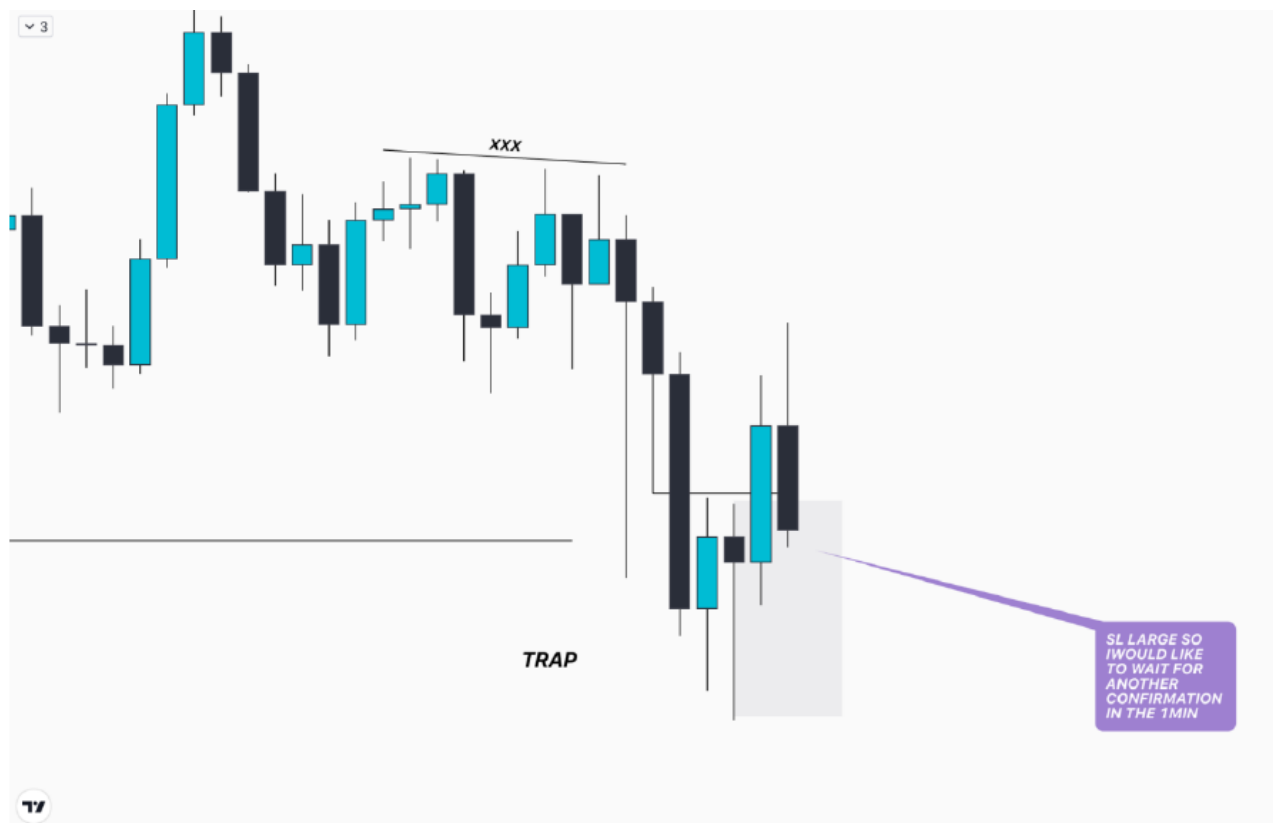
2M



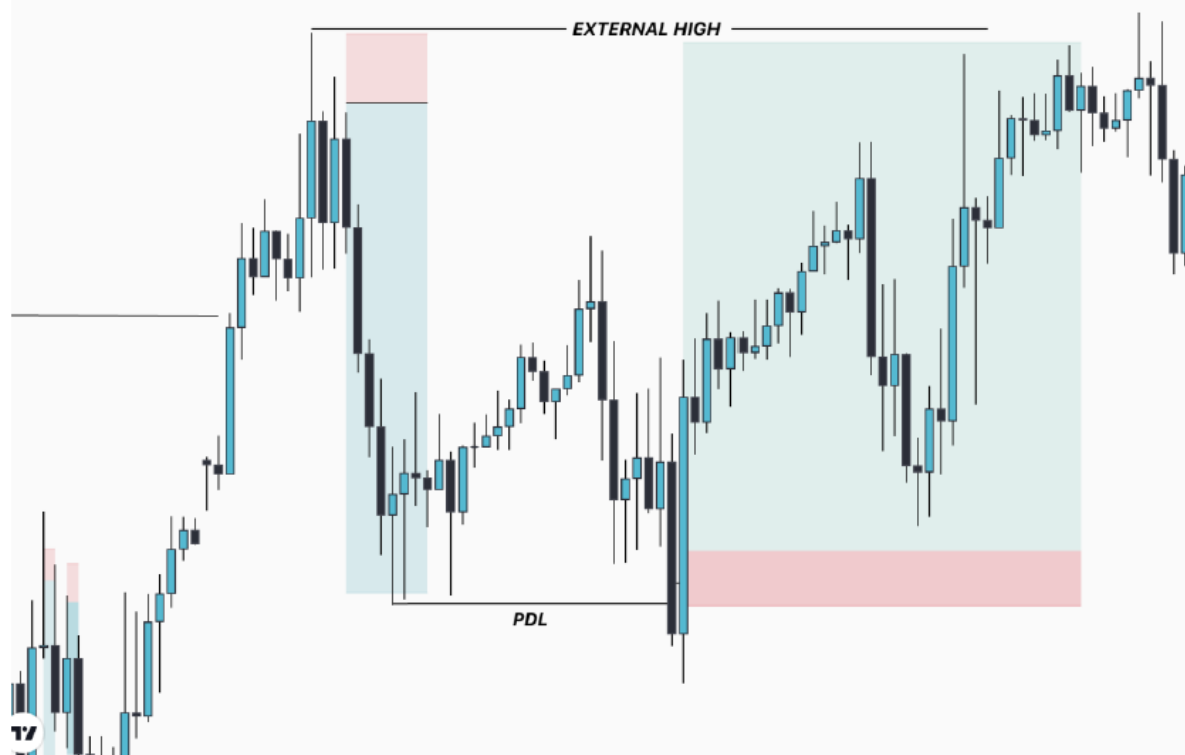




1H

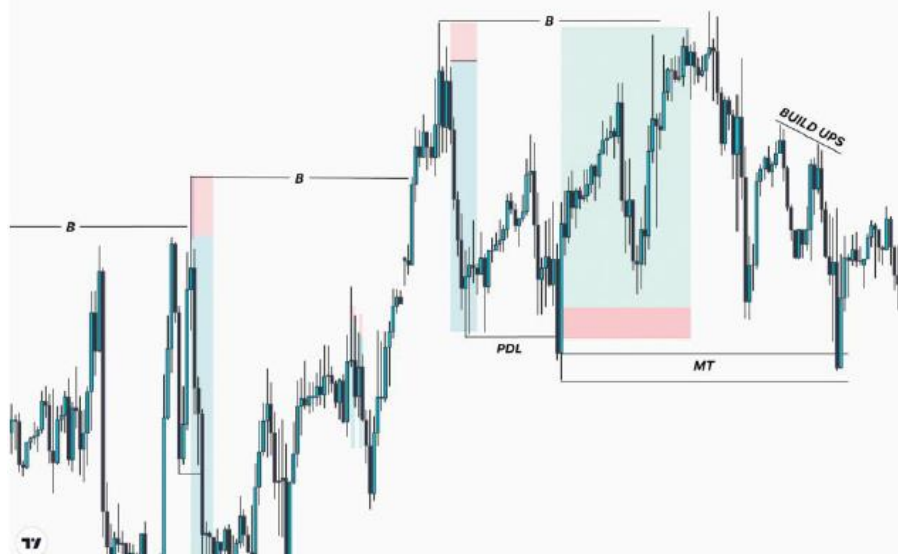


3

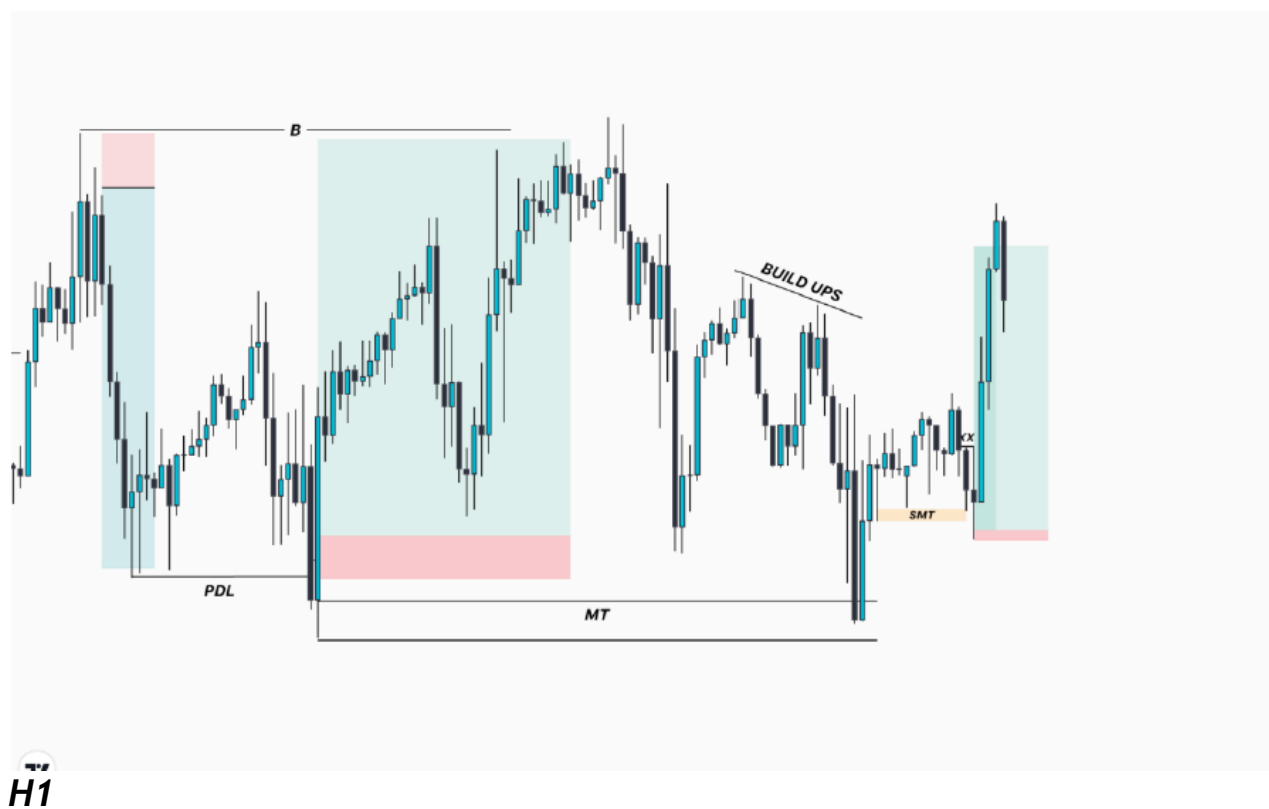


H1

3



H1

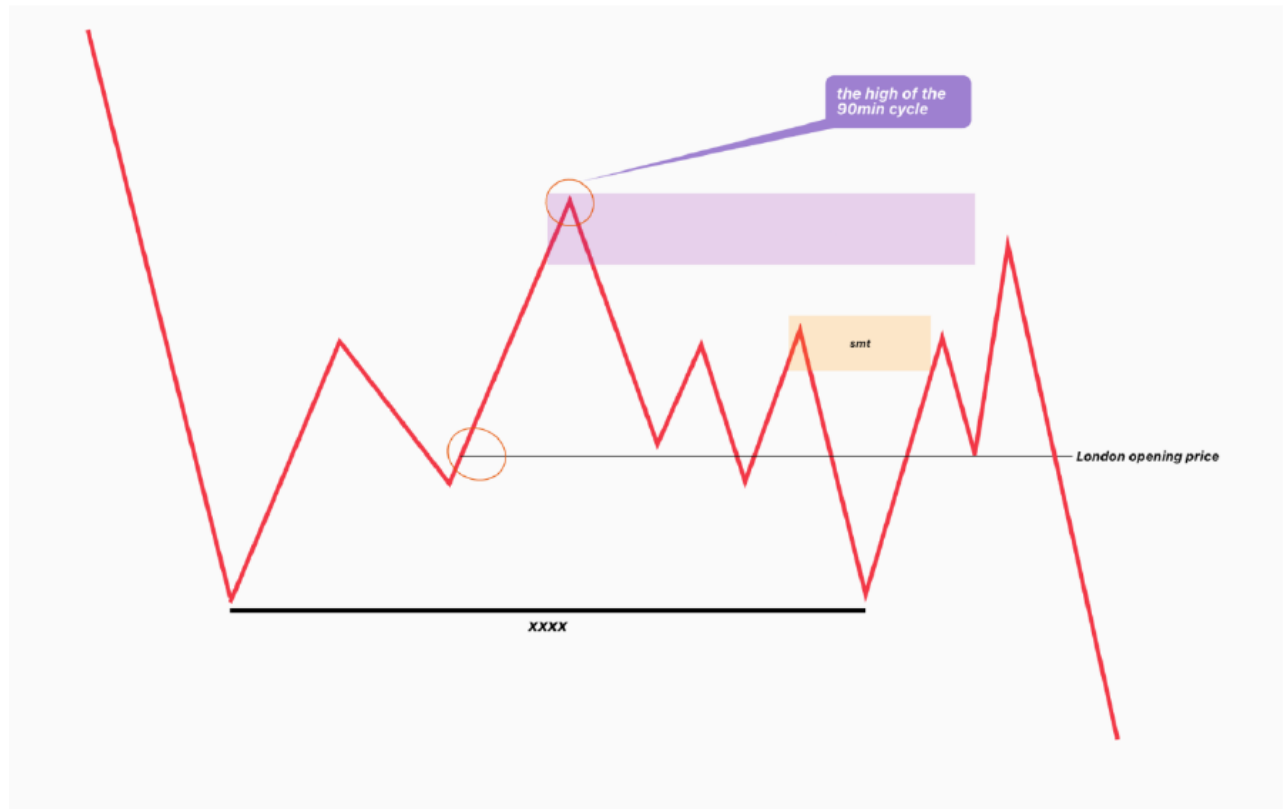




**H1**



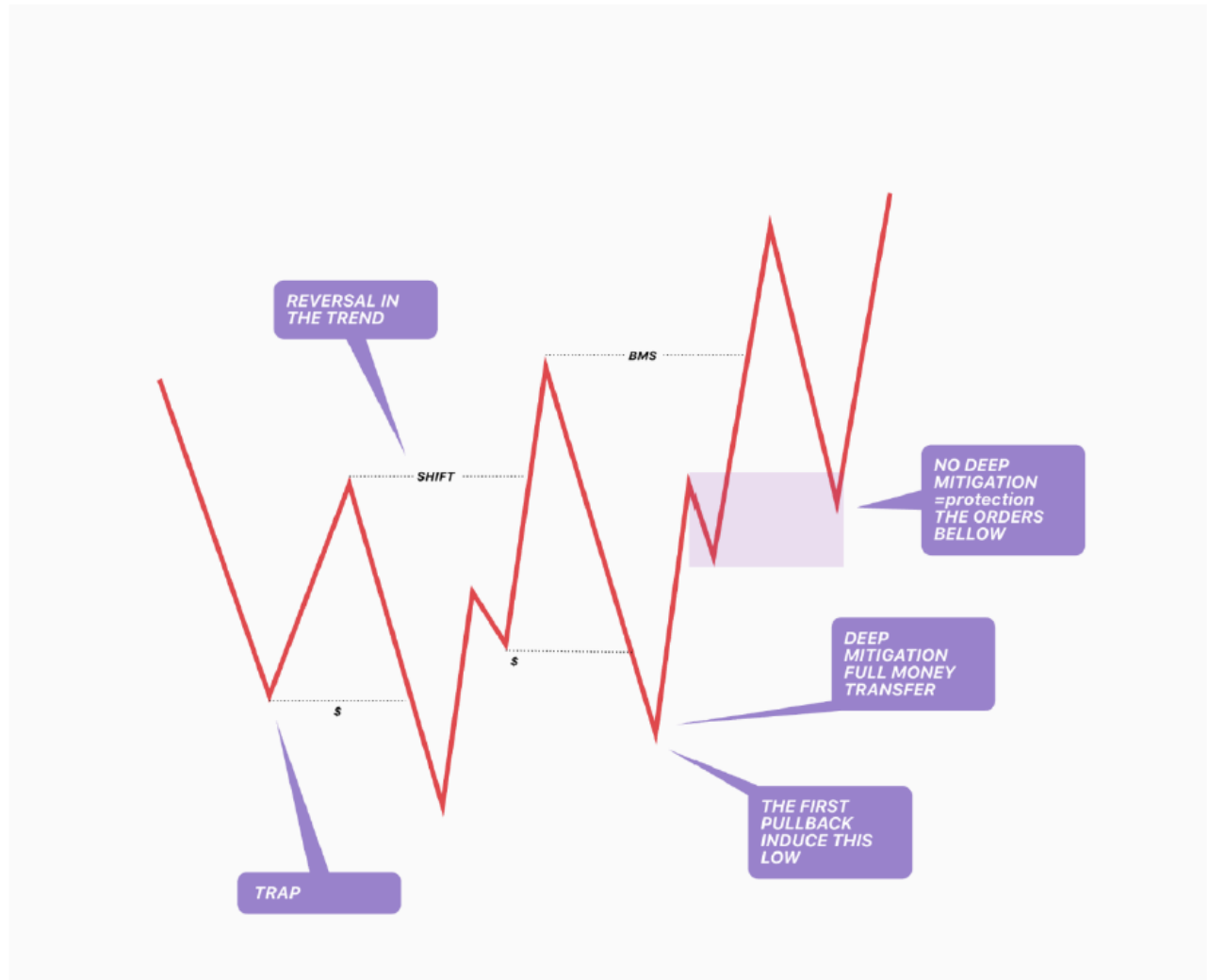
**M1**



## ENTRY TYPE 2

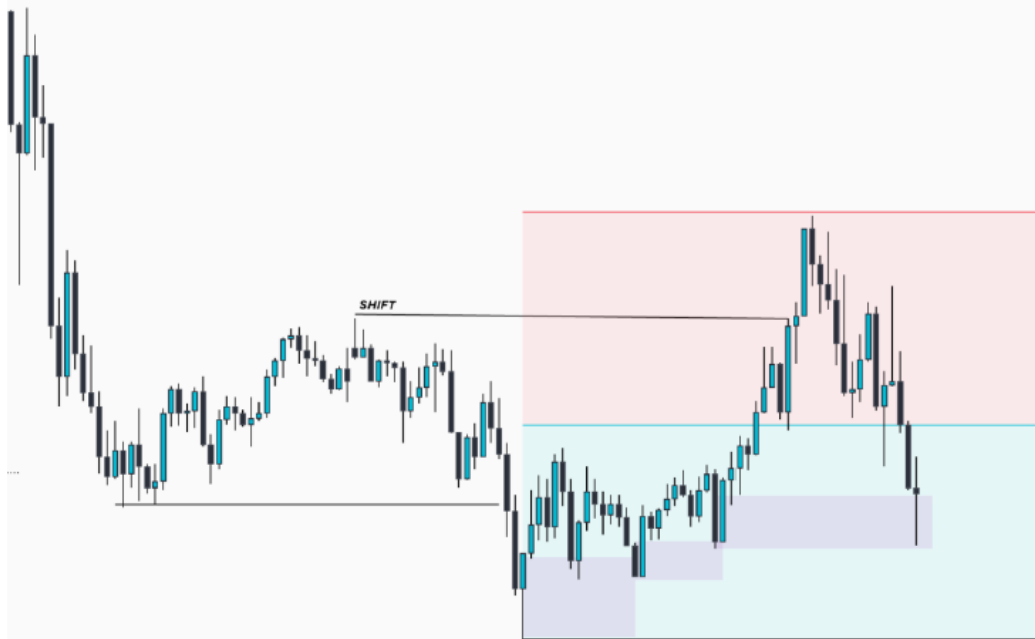
*Using the session opening price to define the discount and the premium range.*

**Following the transfer of money every 90 minutes, a new algorithmic order flow needs to be created.**



**THE BEGINNING OF THE TREND**

3



17

## 10M DEEP RETRACEMENT

3



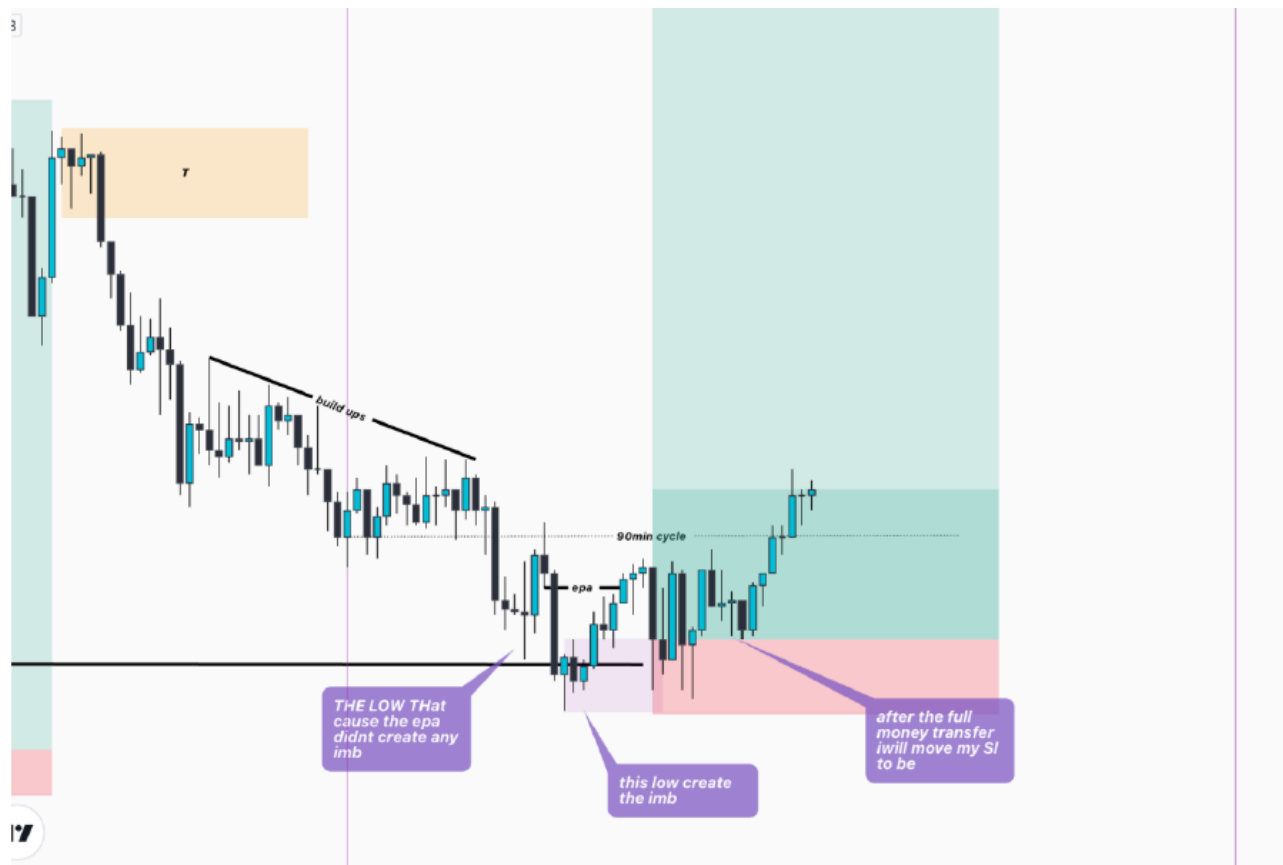
17

## 1M





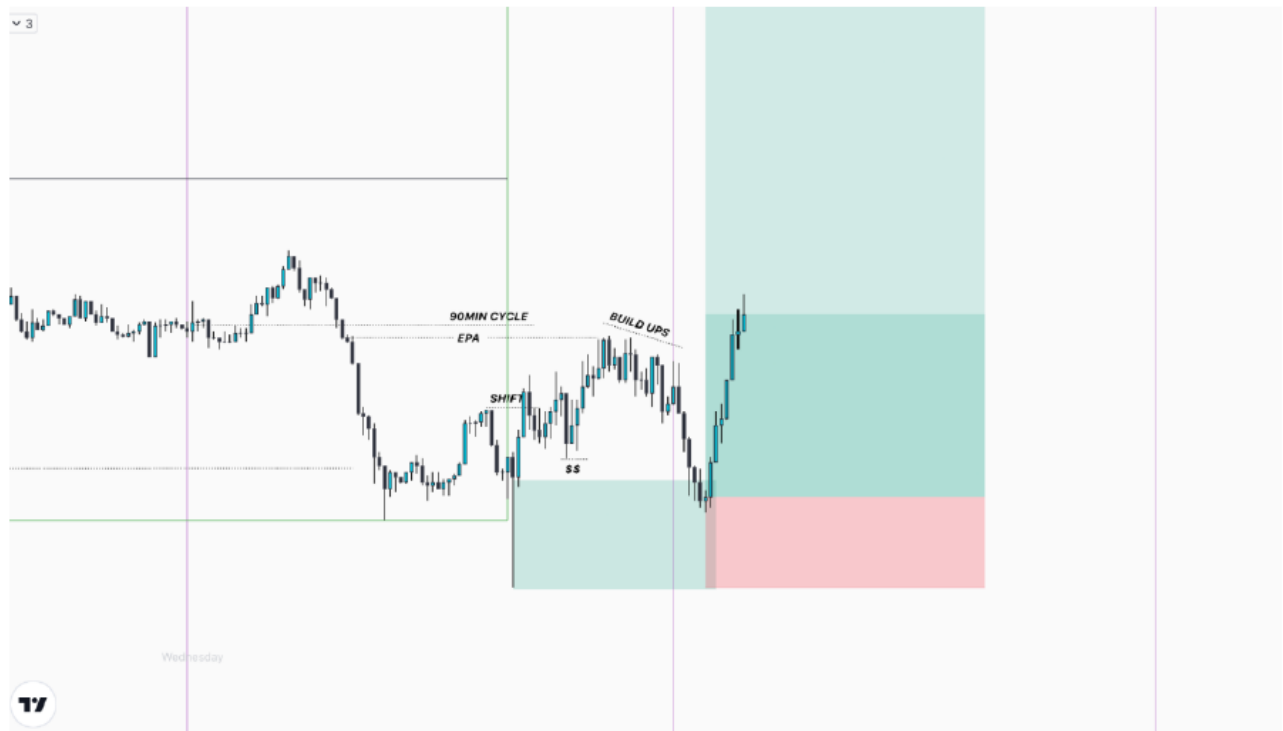
**10M Range**



**1M Entry**



**15M DIRECTION**

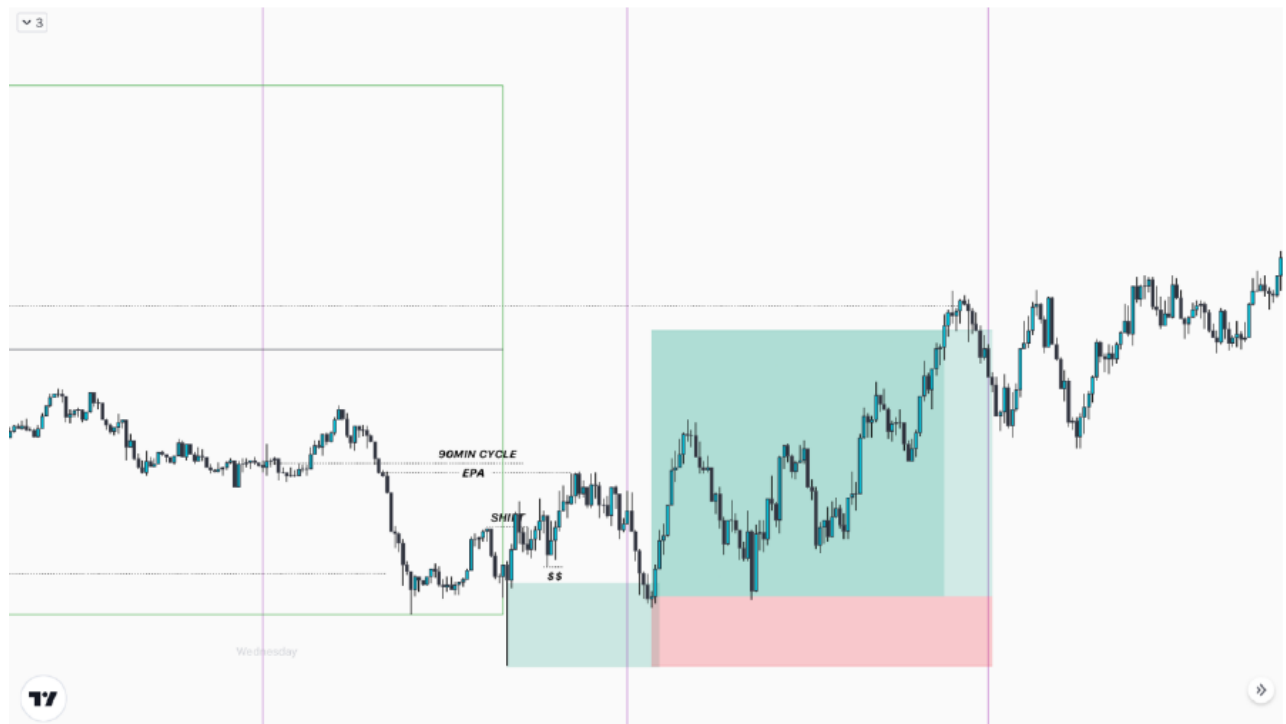


**OUR CONFLUENCES:**

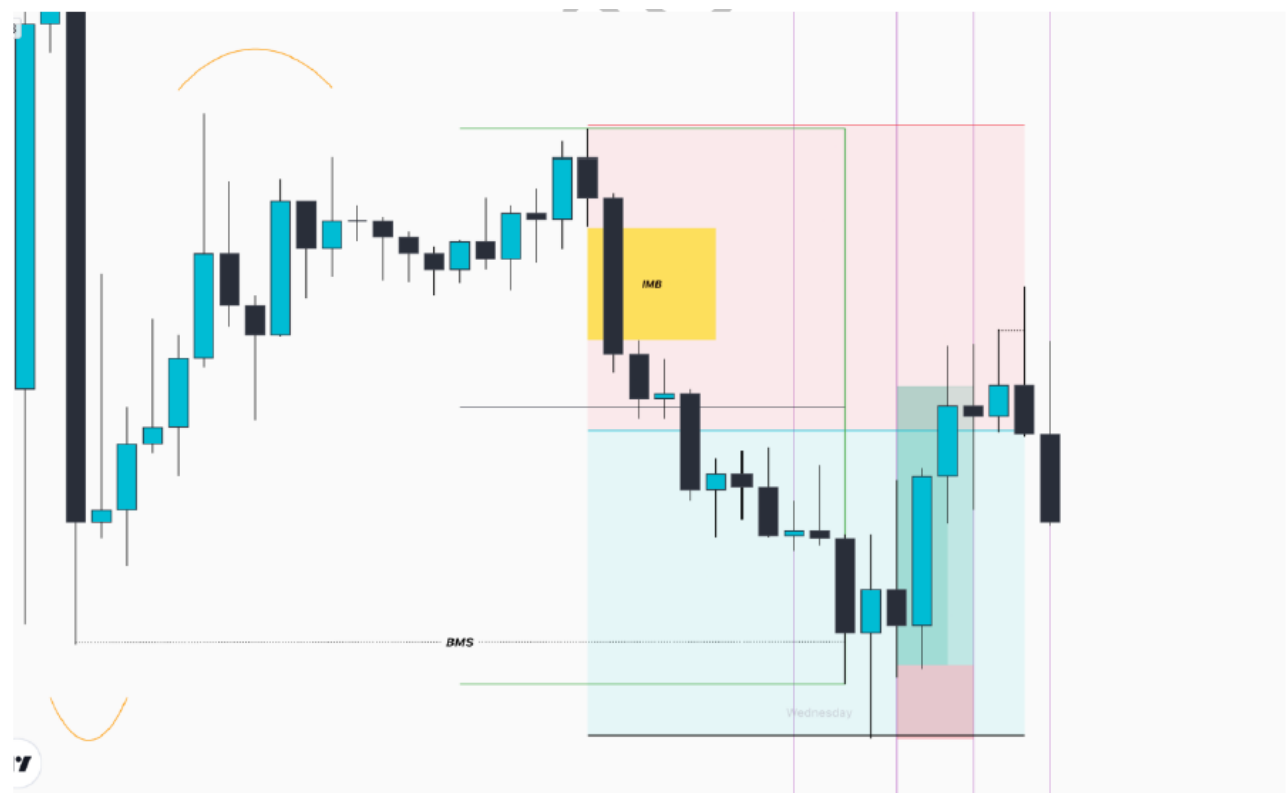
***\*HTF MAJOR TRAP***

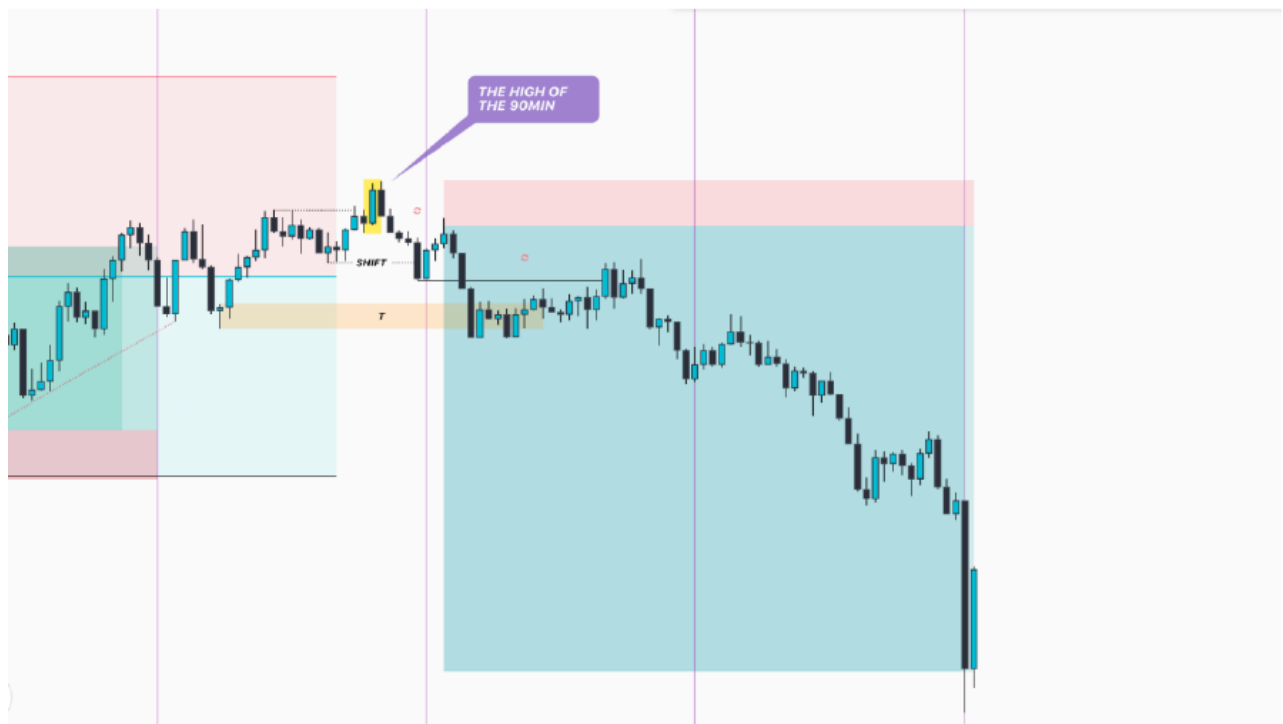
***\*TIMING 90M CYCLE LTF ALGO ORDER***

***\*LIQUIDITY AND BUILD UPS***



## 1M PULLBACK

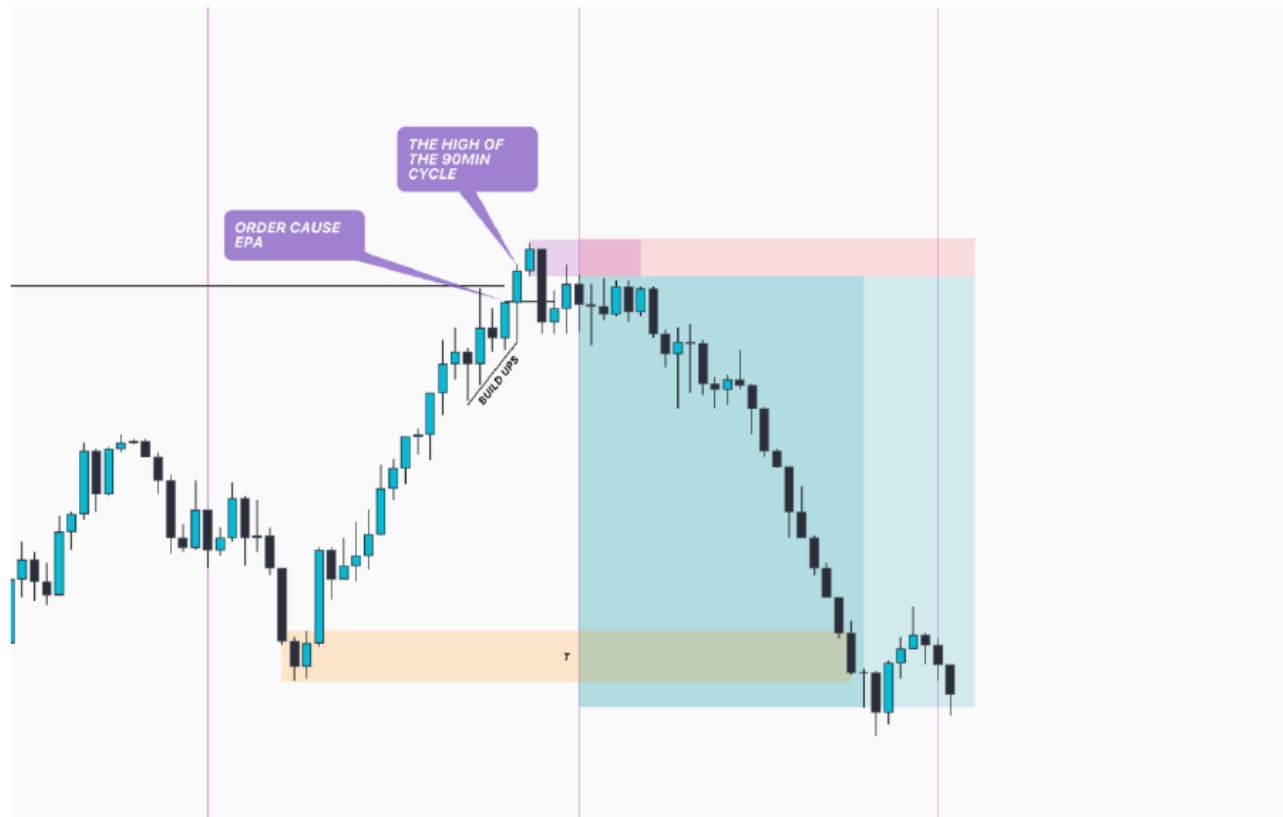




**3M MONEY TRANSFER**



**15M**

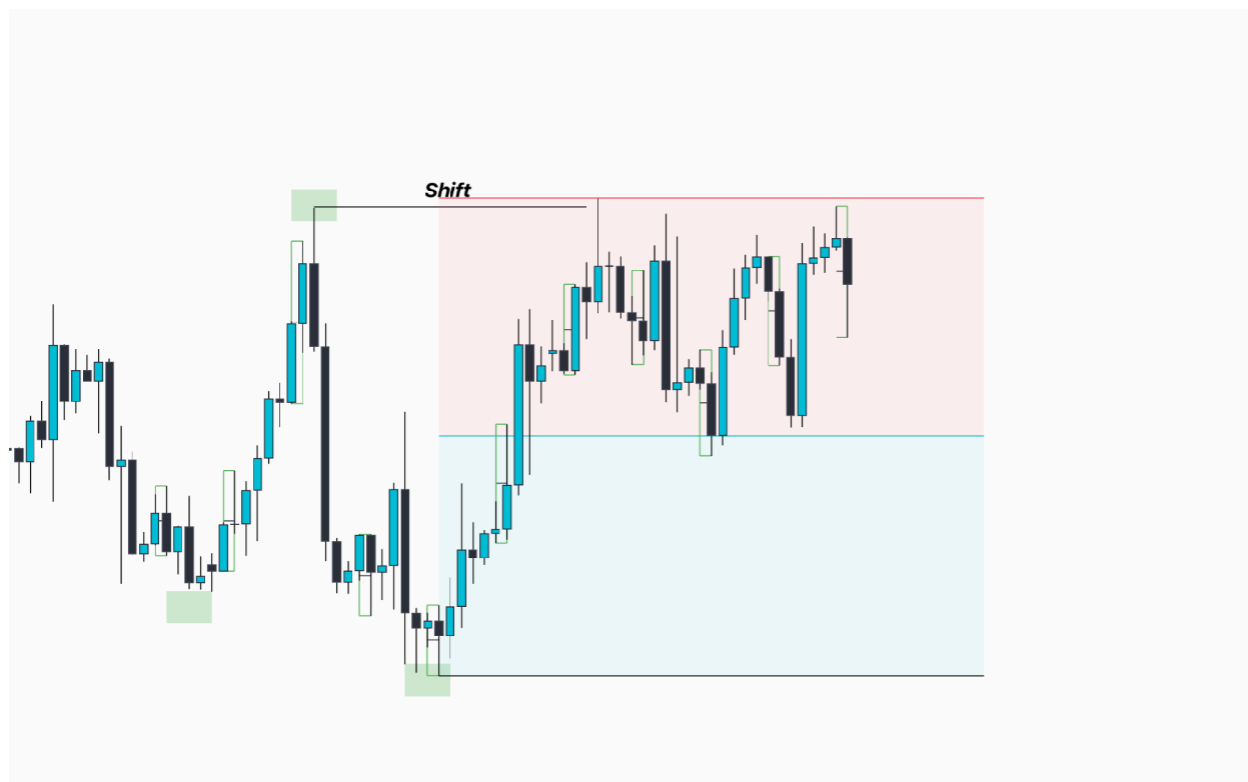


3M

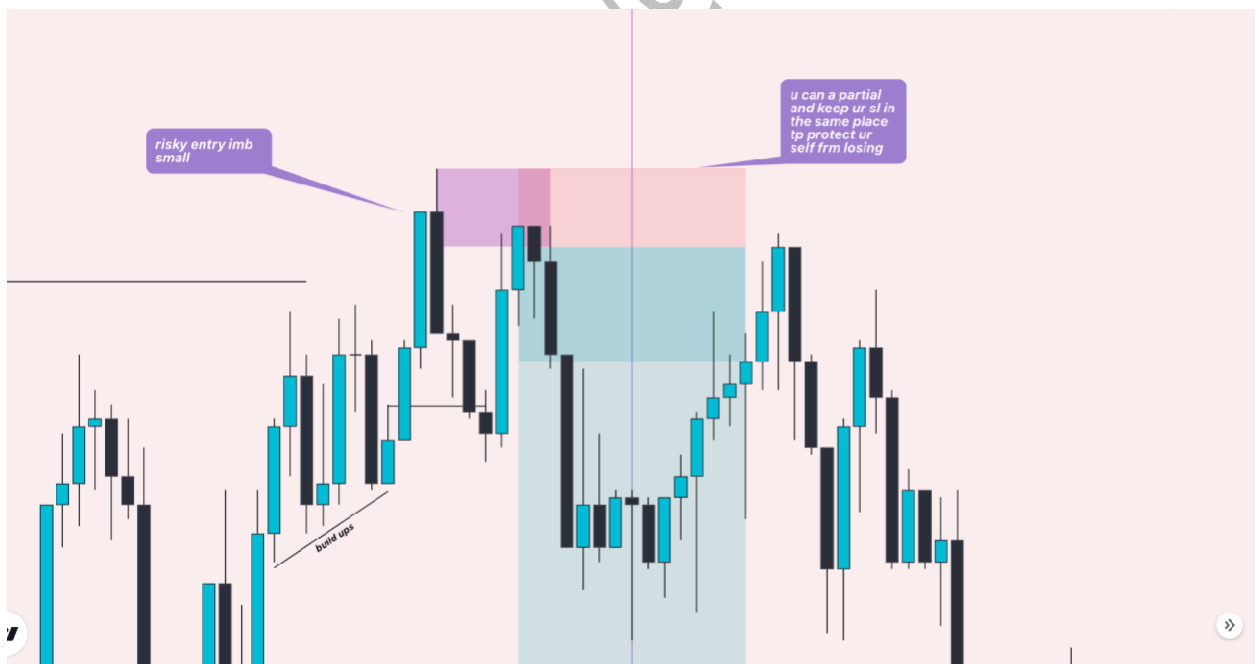
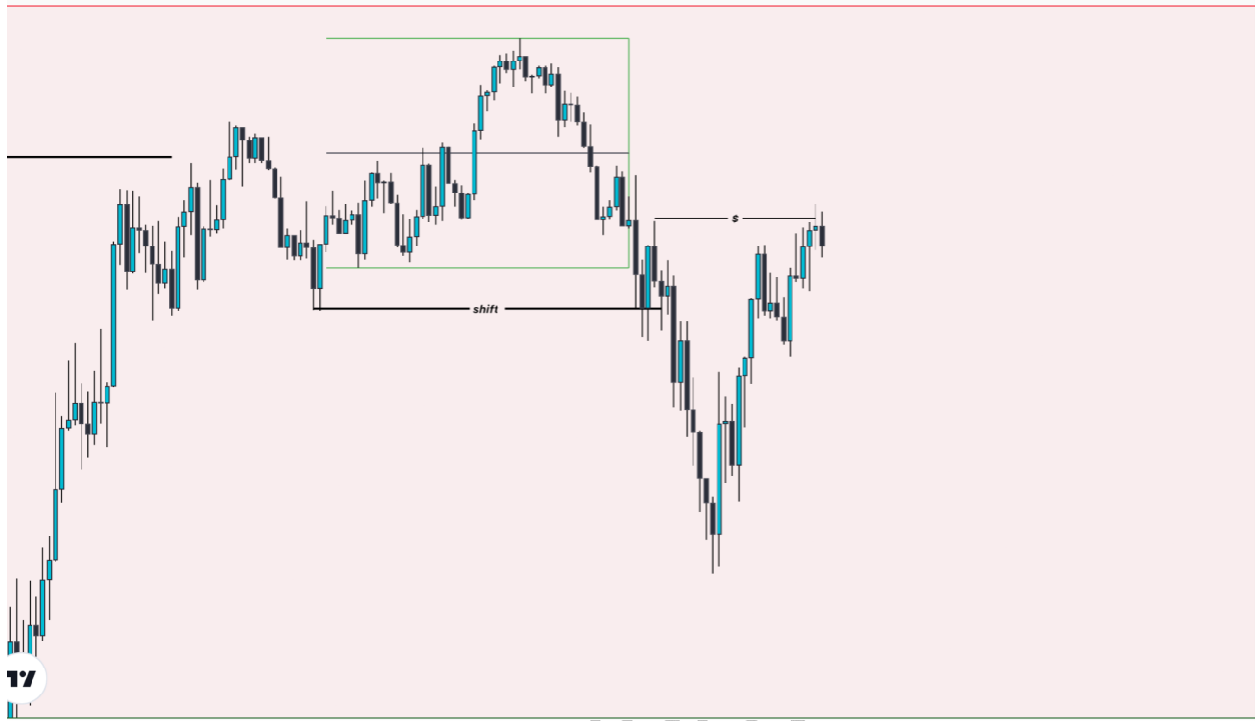


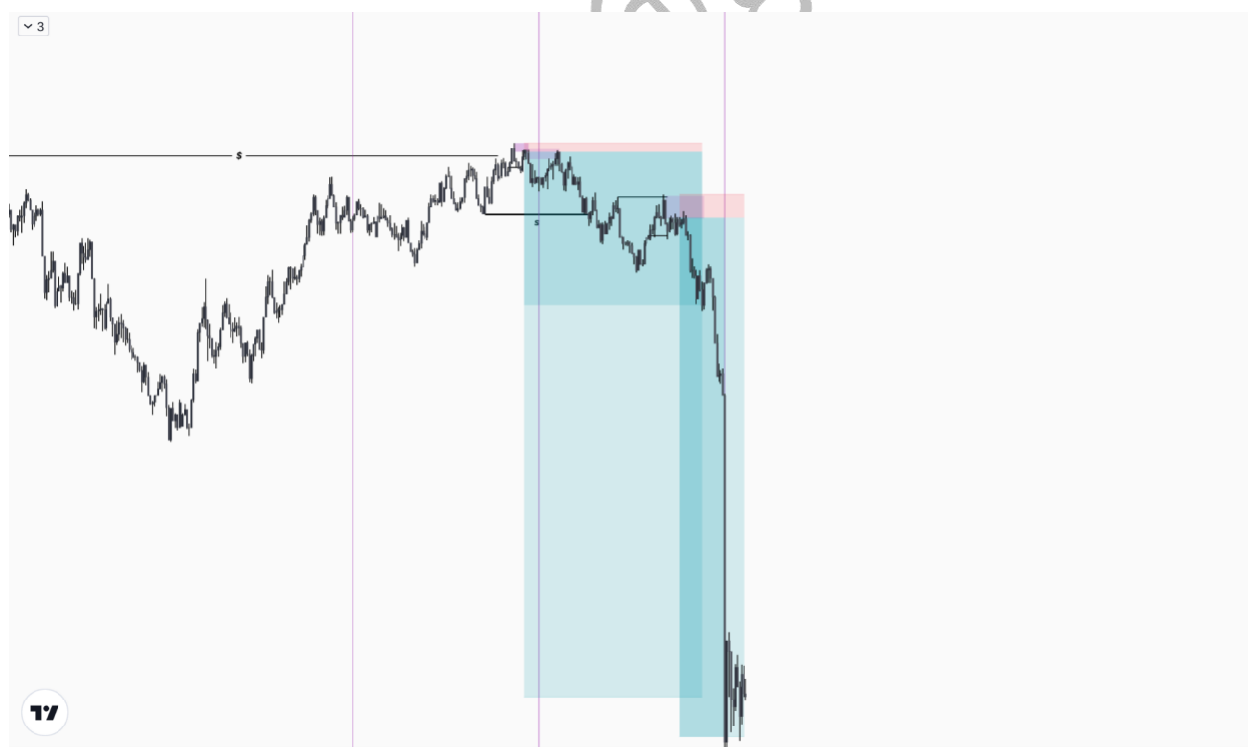


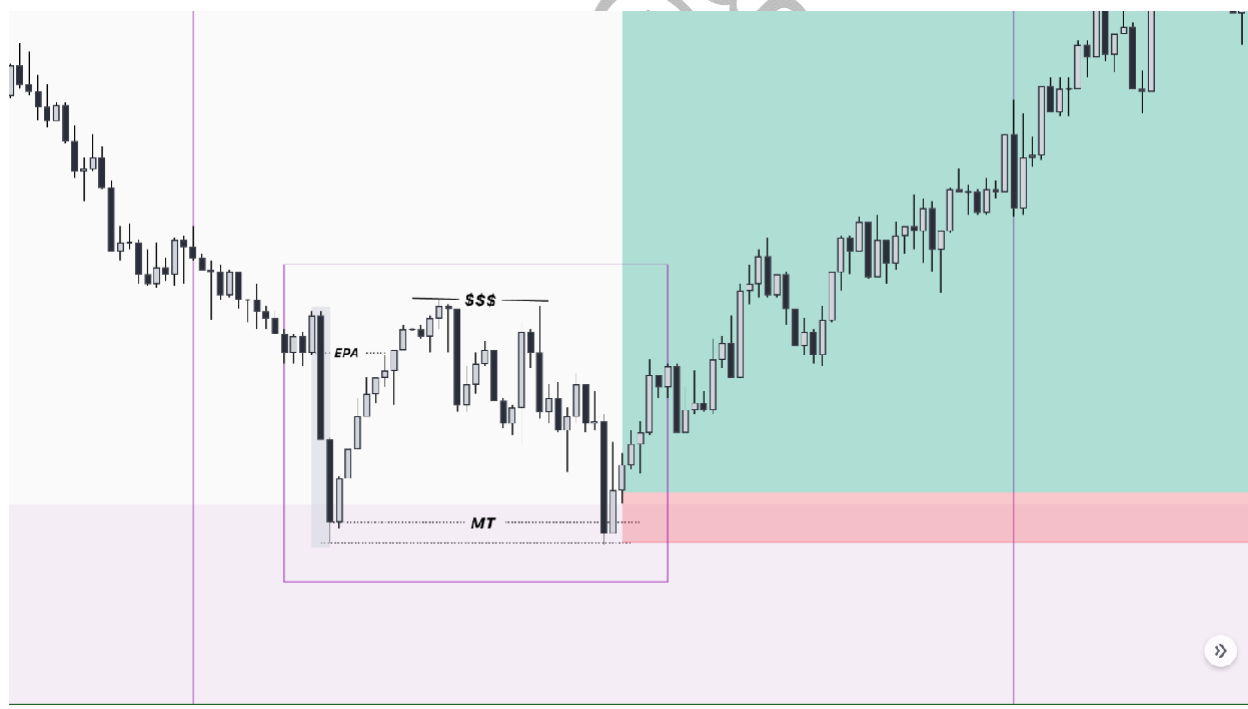
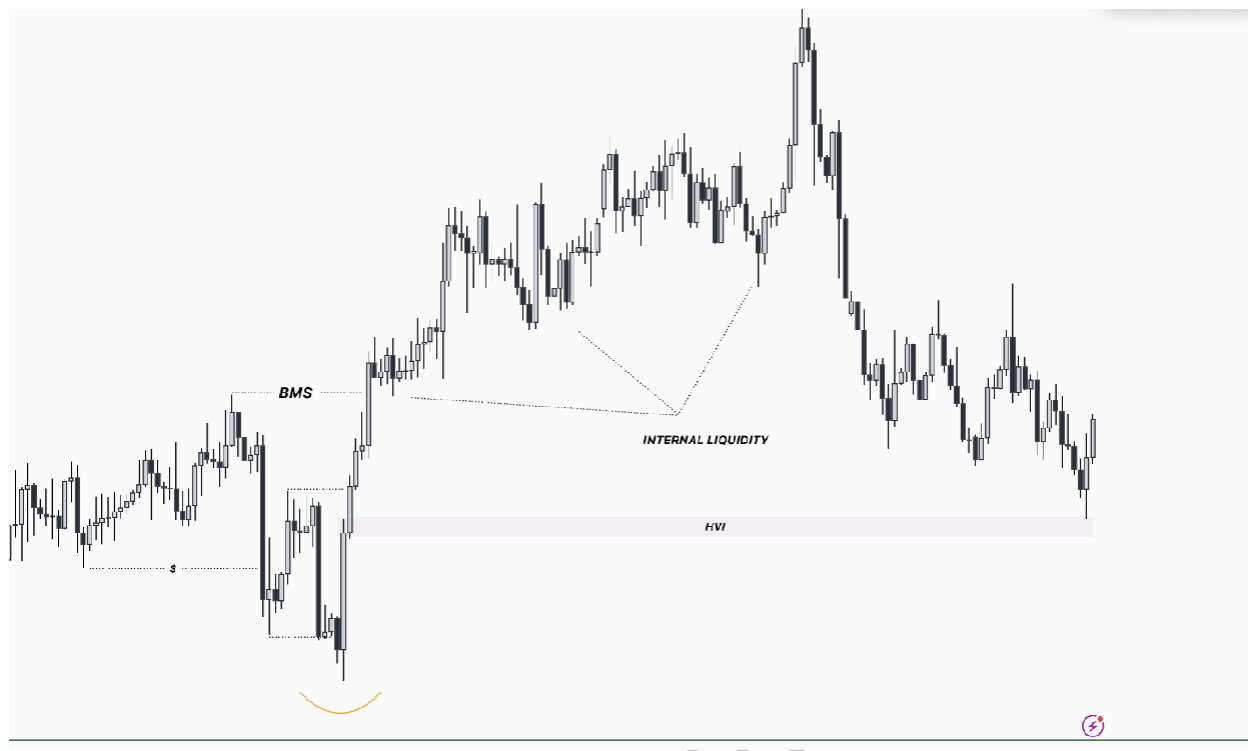
***GRAB HTF STRONG POINT OF LIQUIDITY (STRON HIGH)***

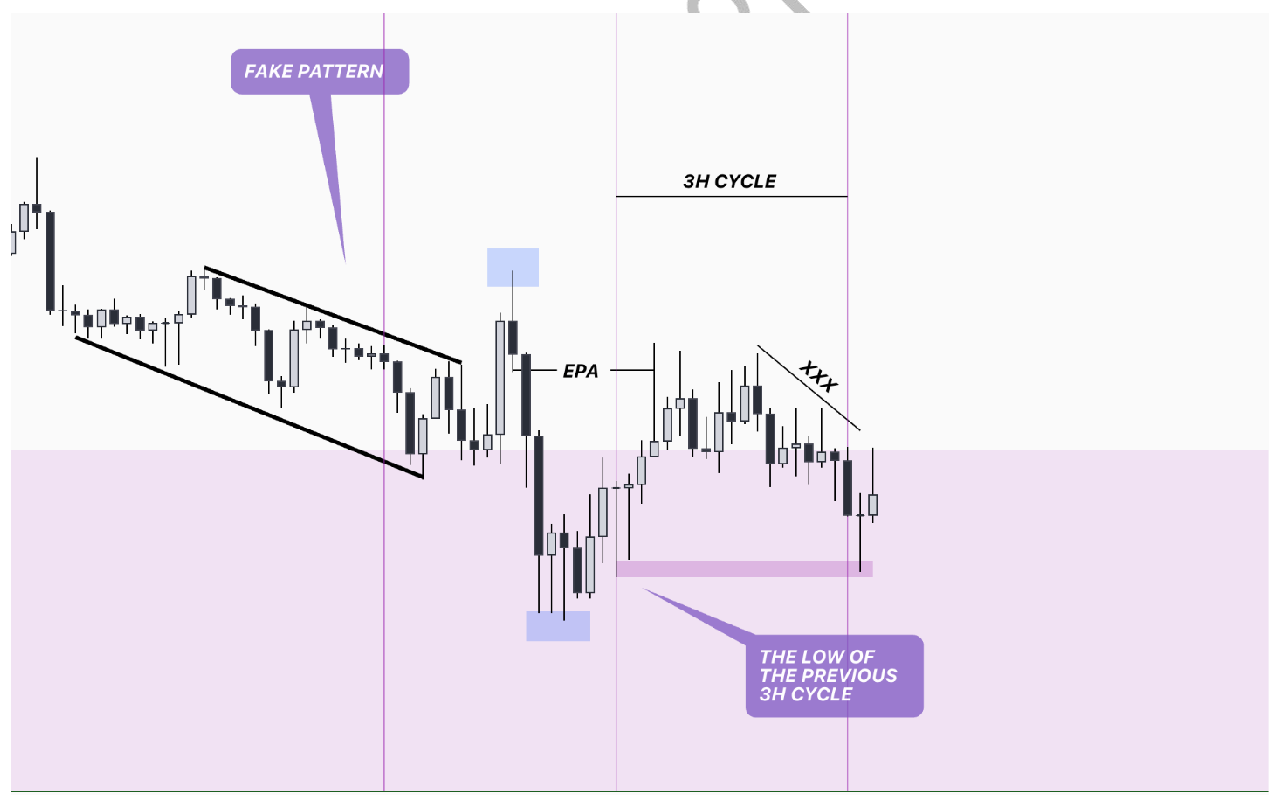
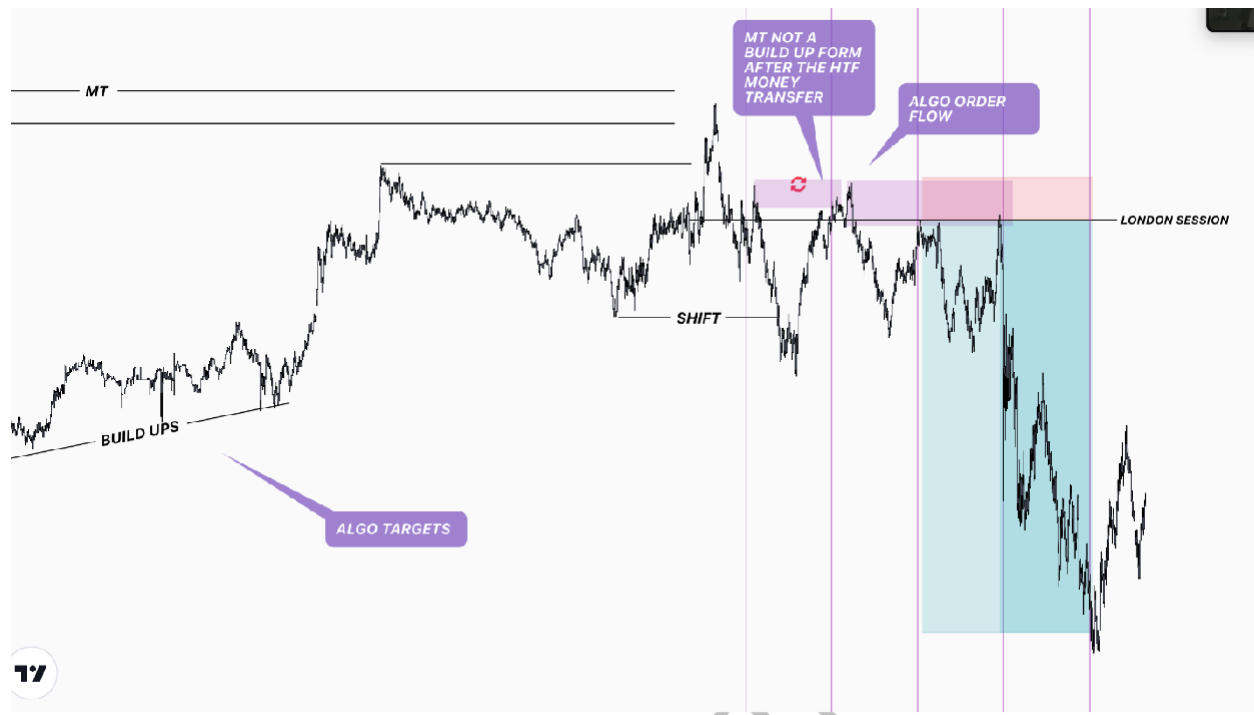


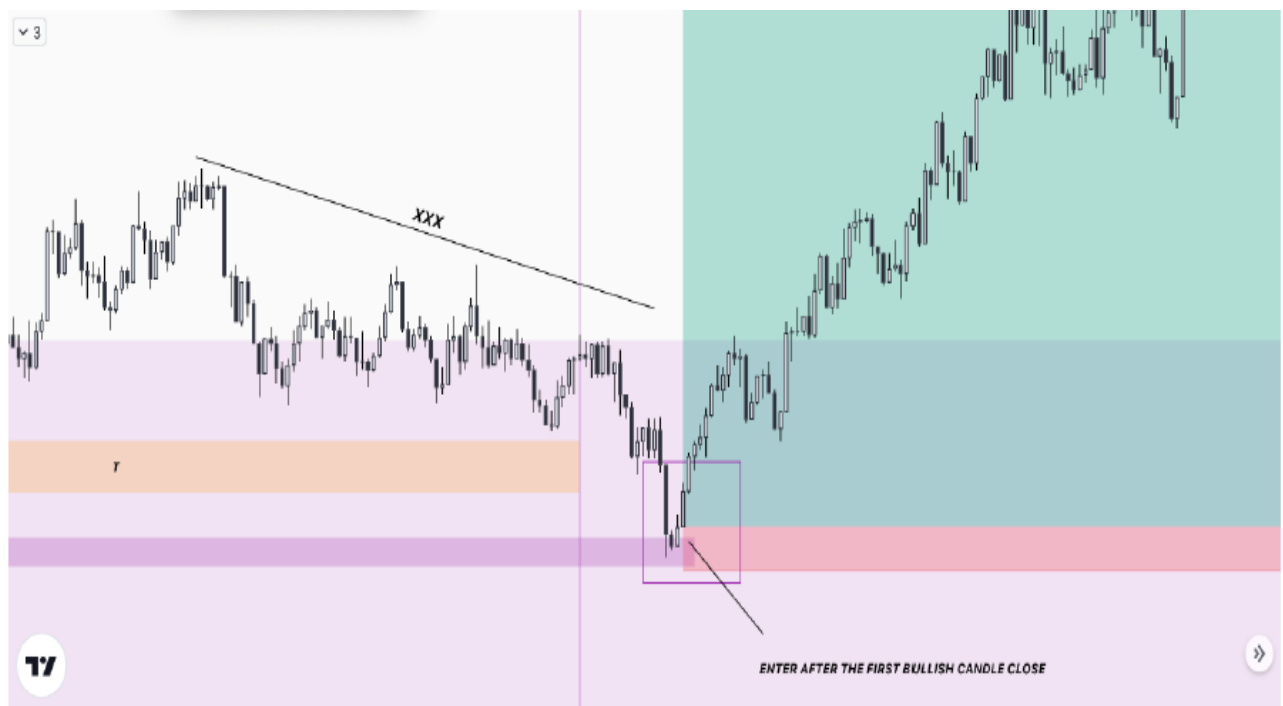
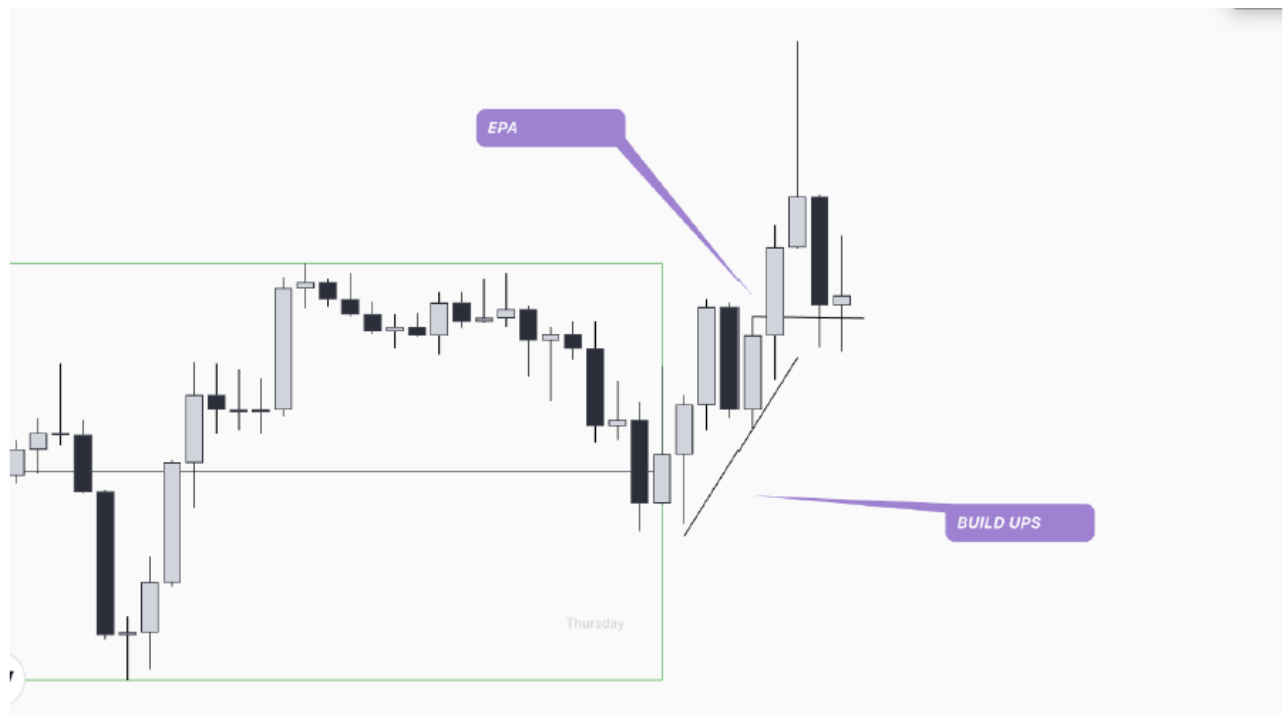


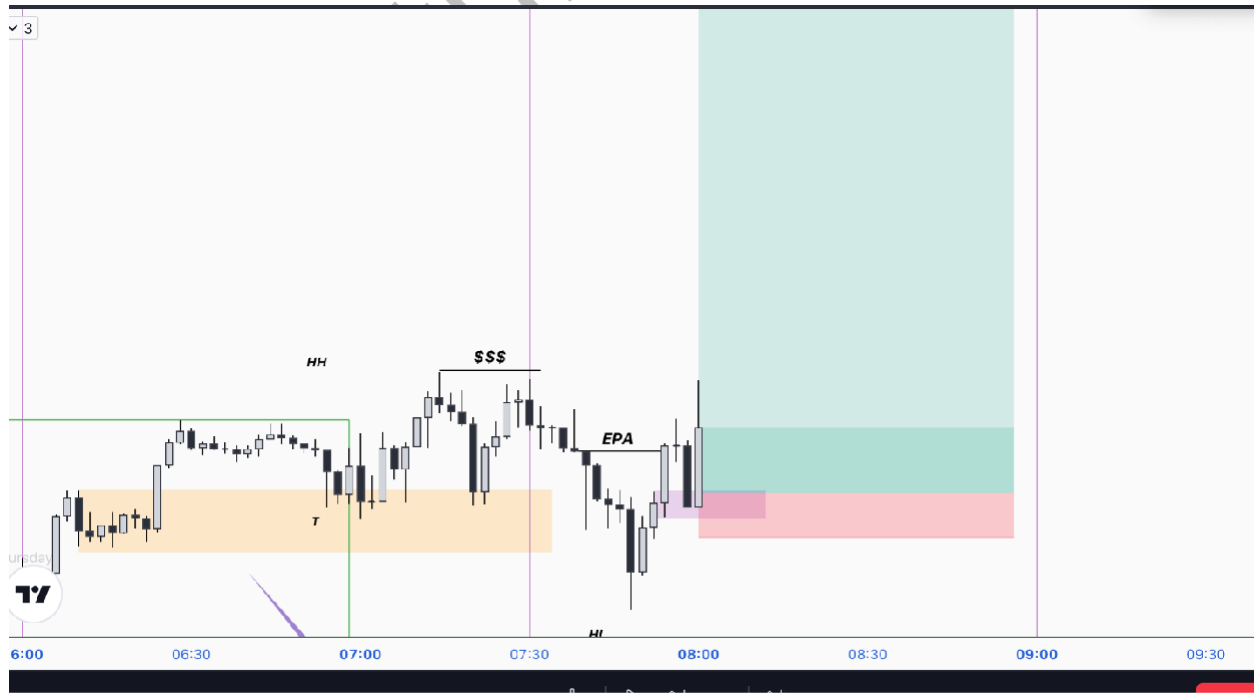














## **RISK MANAGEMENT**

### **INTRADAY TRADERS**

0.25% / 0.5%

Max daily drawdown 1.5%

### **SCALPERS**

0.5% or 1%

Max daily drawdown 2%

### **SWING TRADERS**

1% / 2%

## **OUR ENTRY RULES**

*\*HTF Direction.*

*\*Find the Trap.*

*\*LTF entry using 90m cycle method.*

*\*Use 4H or H1/15m/5m and 3m/1m for entries.*