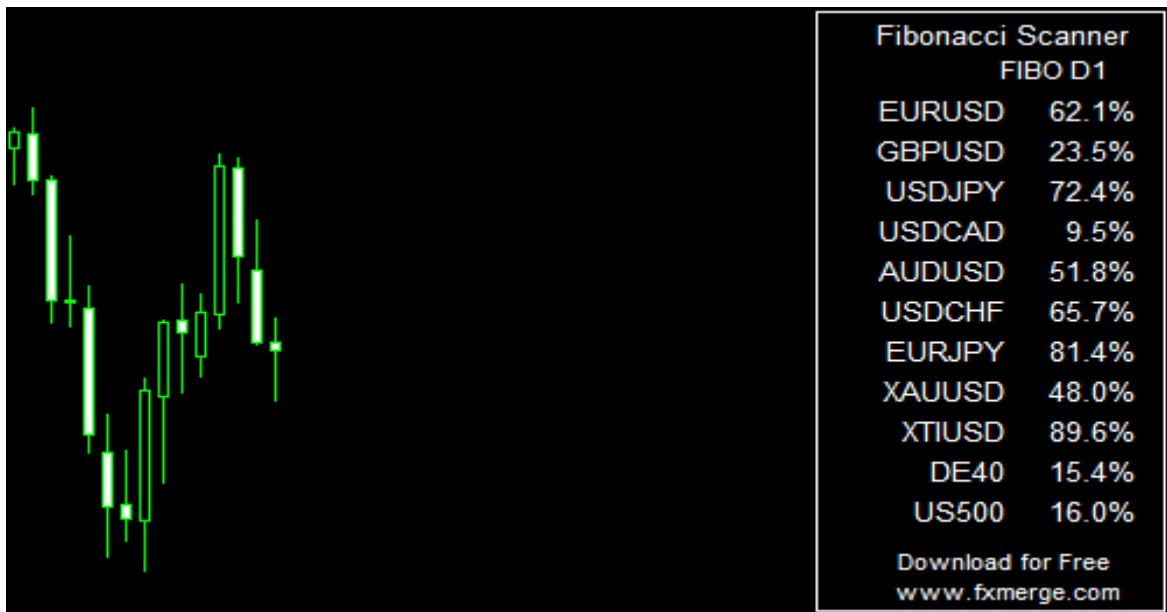


Fibonacci Scanner Indicator

This is a simple scanner which displays on the chart current Fibonacci value on chosen timeframe (daily, weekly or monthly). Fibonacci is calculated for current range of price from this timeframe. There are predefined symbols on which scanner is working - it can display values for all major instruments (major forex, indices, and metals), only some of them: EURUSD, GBPUSD, USDJPY, USDCAD, AUDUSD, USDCHF, EURJPY, XAUUSD, XTIUSD, DE30, US500 (default option) or CFD only. There is a possibility to set alerts (pop-up or mail) when price reaches chosen levels (%) from below or above (alerts are limited to one per chosen time interval i.e. one per day/week/month but resetting the indicator reset also limit for alerts). Version for MetaTrader 4 and MetaTrader 5.



Parameters of the scanner

- showOnlyCFD (true/false) – show only values for indices
- showAllPairs(true/false) – show all defined pairs
- TF (D1/W1/MN1) – choice for timeframe on which Fibonacci values are calculated

“Alerts settings”

- alertsCrossUp (true/false) – activation for alerting when price reach chosen level from below
- levelCrossUp (number) – chosen percentage for alerting when price reach this level from

below

- alertsCrossDn (true/false) – activation for alerting when price reach chosen level from above

- levelCrossDn (number) – chosen percentage for alerting when price reach this level from above

- PopUpAlert (true/false) – activation for displaying detected alerts as pop-up alerts on the platform

- EmailAlert (true/false) – activation for sending detected alerts as an email message
- textColor (color) – color of the text and panel visible on char