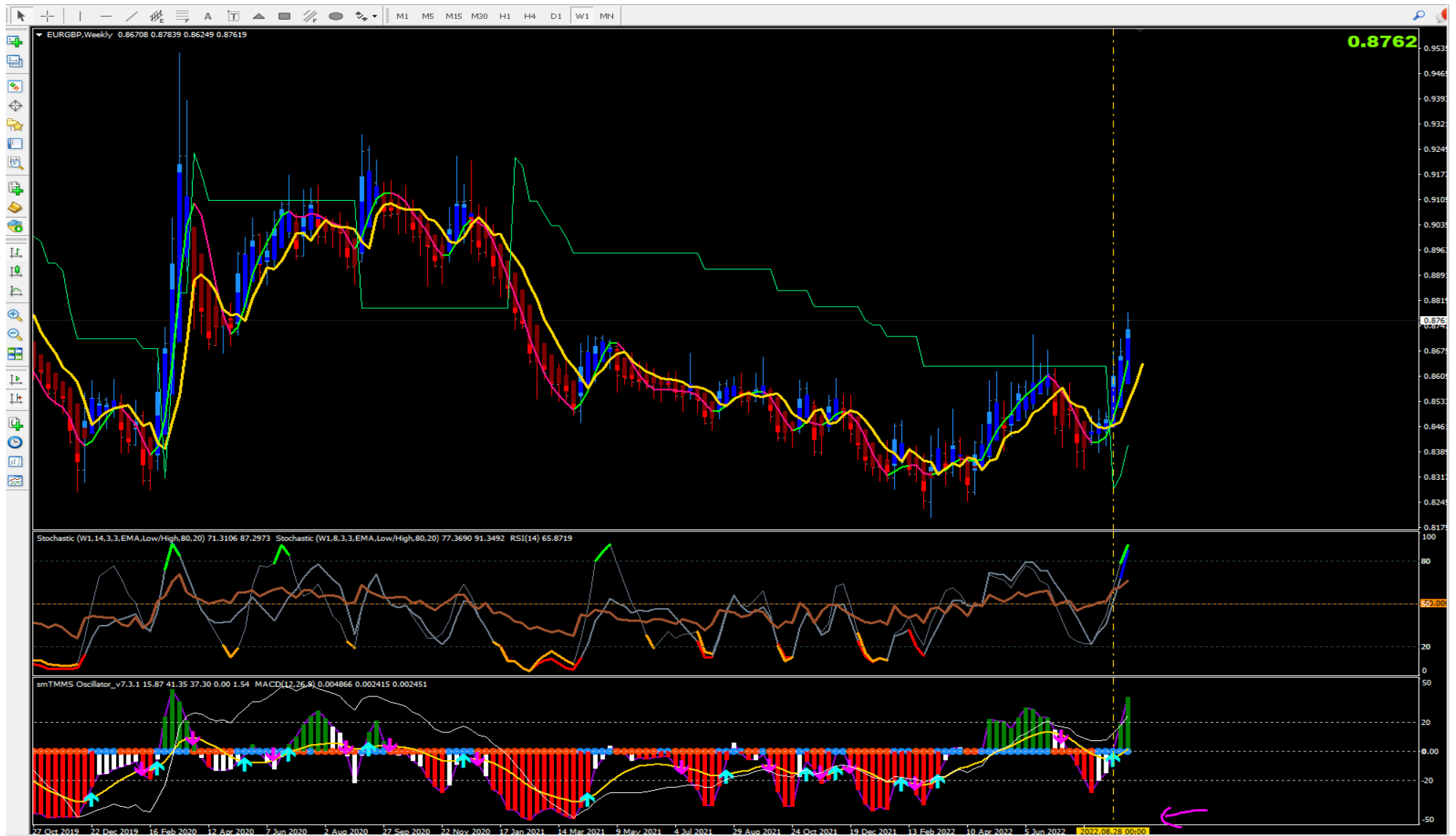


EURGBP W1

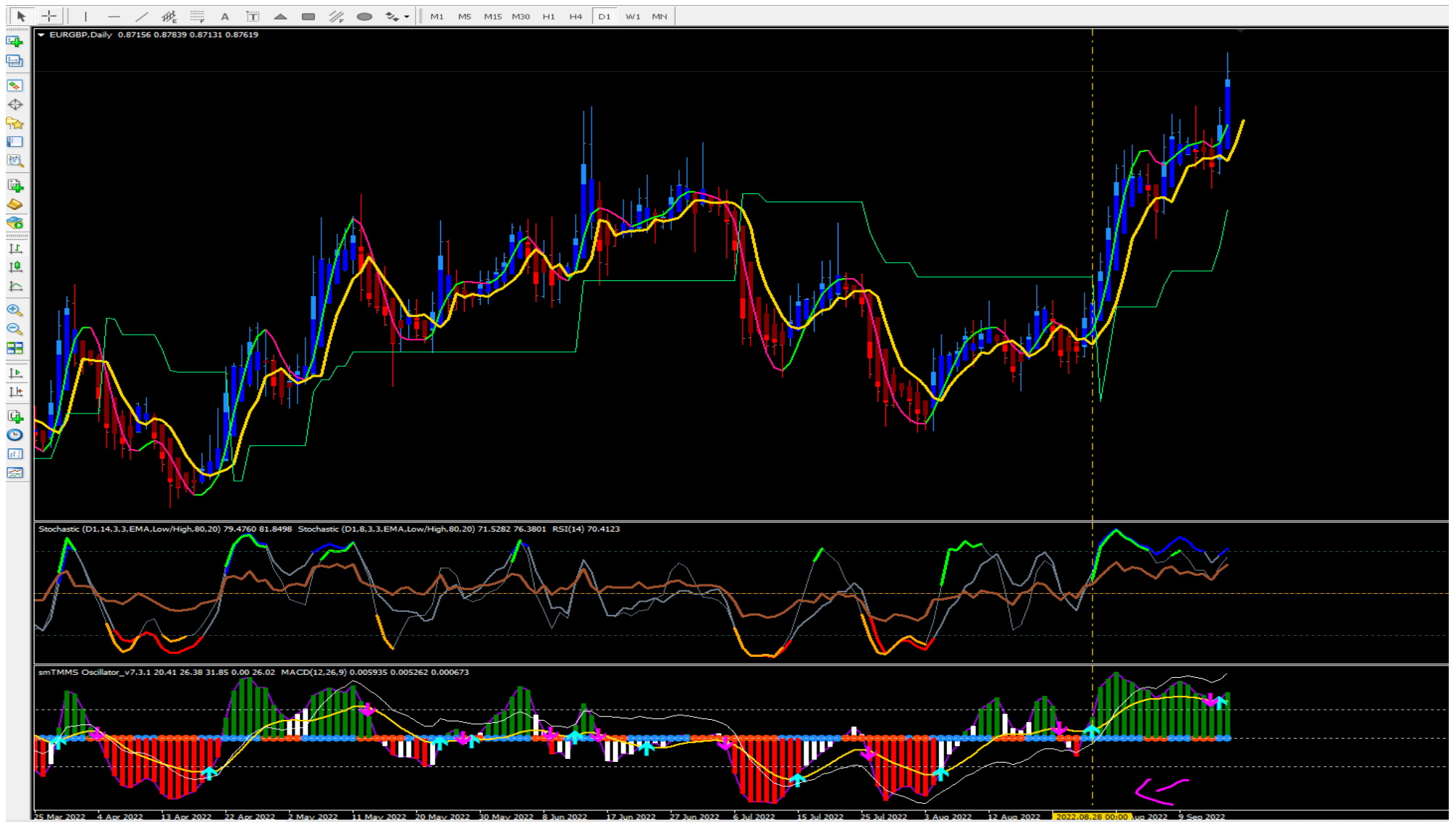
last weekly bullish candle closing above the MAX of the previous candle. Wick on min longer than that on max,
Resistance identified at 0.88626



Long signal Tms (r) triggered on 28/8 on W1

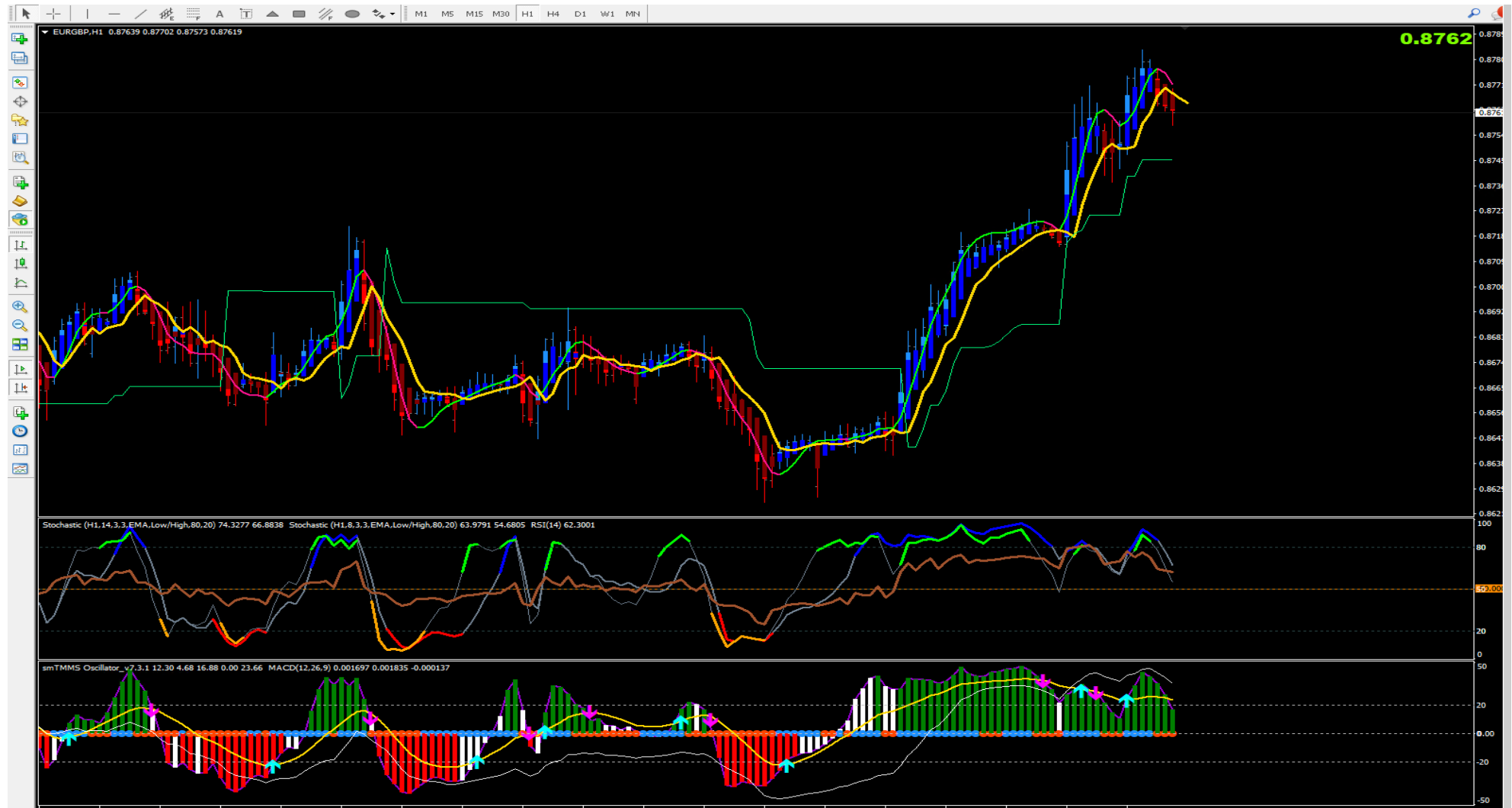


D1



H1

Pullback Coming? H1 would seem to say this



CONCLUSIONS

Let's see how London will open to understand how long the corrective phase will last, waiting for the buy entry signal. Important that H4 keeps its current setting.