

ASSALAMUALAIKUM..!

SALAM SEJAHTERA KEPADA ANDA SEMUA



AT HERE I WILL EXPLAIN HOW I DO SCALPING
WITH SIMPLE AND COMPACT DETAILS. THE WAY I DO SCALPING IS VERY EASY AND CAN BE
UNDERSTANDED VERY EASILY SINCE I HAVE DONE THE STEPS ONCE BY ONE SO YOU CAN

CARA SETTING MT4/MT5 DAN APLIKASI

INSERT STOCHHASTIC OSCILLATOR INDICATOR
WITH THE FOLLOWING SETTINGS;

- 1- K PERIOD; 3 / D PERIOD; 1 / SLOWING; 4
- 2- PRICE FIEND; CLOSE/CLOSE
- 3- METHOD; EXPONENTIAL
- 4- LEVEL; 90/50/10



PARAMETERS

32

1

4

Close/Close

Exponential

Main

3 pixel

Signal

3 pixel

Levels: 90, 10, 50

SCALP



Stochastic Oscillator



90

Description

10

Description

50

Description

Style

2 pixel



Set to default

SEKARANG GRAF MT4/MT5 ANDA AKAN JADI SEPERTI INI

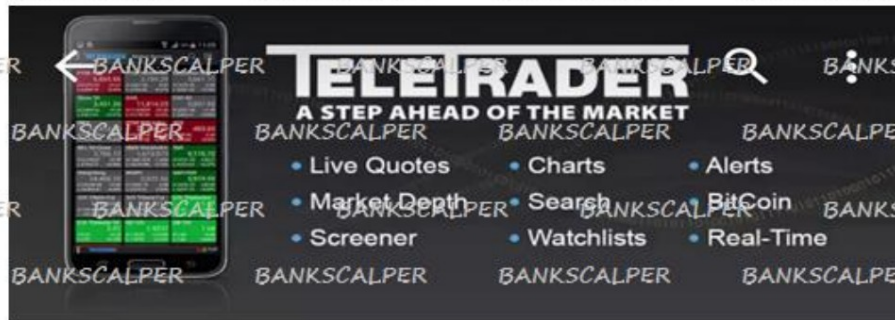


DOWNLOAD APLIKASI STOCK MARKETS

STEP 1



BUKA PLAY STORE ATAU IOS ANDA DAN SEARCH APLIKASI STOCK MARKET DAN DOWNLOAD



StockMarkets

Teletrader

3+

UNINSTALL

OPEN



Downloads



15,141



Finance



Similar

market,trade,stock,nyse,track,news,quote,
nasdaq,price,alert,chart,bitcoin



WHAT'S NEW

Major data upgrade

We are happy to announce that the
StockMarkets app now includes free Real-

STEP 2



KEMUDIAN KLIK TANDA RITE DI BAHAGIAN ATAS
SEBELAH KANAN



STEP 3



AKAN KELUAR SENARAI SEPERTI INI DAN ANDA CUMA PILIH PAIR SPOT CURRENCY SAHAJA.



STEP 4



KEMUDIAN AKAN TERPAJAR SPOT CURRENCY SAHAJA
SEPERTI INI.



PADA PAPARAN HADAPAN STOCK MARKET TERSEBUT TERDAPAT 3 WARNA BERBEZA

WARNA HIJAU

- MEANS THE CONDITION OF THE CURRENCY IS **STRONG BUY**

WARNA MERAH

- MEANS THE CONDITION OF THE CURRENCY IS A **STRONG SELL**

WARNA KELABU

- MEANS THE CONDITION OF THE CURRENCY IS **NEUTRAL**
(SIDEWAY)

THIS MARKET STOCK **APPLICATION** WILL BE USED AS AN **ACCURATE** INDICATOR OF THE **CURRENT** MARKET SITUATION AND I HAVE USED THIS APPLICATION A YEAR AGO WITH **VERY HIGH ACCURACY AND IS VERY** HELPFUL .

IF YOU LOOK AT THE GROUP YOU WILL SEE THAT I JUST DID **SCALPING** ON THE SAME PAIR EVERY DAY. THIS IS BECAUSE THE PAIR IS IN IN STOCK MARKET AND I JUST FOCUS ON THOSE PAIRS ONLY **BASED ON INSTRUCTIONS** IN THE STOCK MARKET. THE RESULT I DON'T NEED TO TELL YOU BECAUSE YOU HAVE SEEN FOR YOURSELF I HAVE PROVEN IT INSIDE GROUP BANK SCALPER. ON MY OWN MT5 I HAVE SET ONLY PAIR SUCH I WILL TRADE.



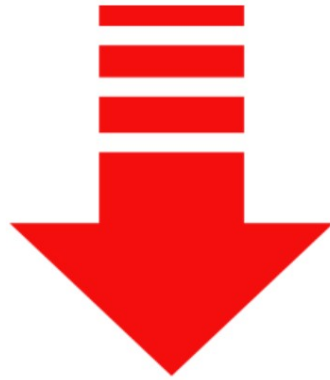
BAIKLAH SEKARANG SAYA AKAN MENUNJUKAN BAGAIMAN STEP BY STEP UNTUK Mencari ENTRY DAN Mendapatkan SETUP SIGNAL BUY DAN SETUP SIGNAL SELL. INI ADALAH POINT TERPENTING BAGAIMANA CARA SCALPING BANK SCALPER BERFUNGSI.

1. OPEN YOUR MT4/MT5 AND LOOK AT TF15.
2. SEE WHERE THE STOCH IS.
3. MAKE SURE STOCH 3.1.4 ON TF M15 IS WITHIN AREA 90 TO
STANBY ENTRY SELL.
4. MAKE SURE STOCH 3.1.4 ON TF M15 IS IN AREA 10 FOR STANBY
ENTRY BUY.
5. IF STOCH 3.1.4 (M15) IS IN AREA 90 STANBY FOR ENTRY SELL THEN PLEASE OPEN
THE STOCK MARKET APPLICATION AND MAKE SURE THE CURRENCY IS RED
(STRONG SELL)
6. IF STOCH 3.1.4 (M15) IS IN AREA 10 STANBY FOR ENTRY BUY THEN PLEASE OPEN
THE STOCK MARKET APPLICATION AND MAKE SURE THE CURRENCY IS GREEN
(STRONG BUY)
7. TO MAKE AN ENTRY BUY **HOW** FROM TF M15 CHANGE TO TF M1 AND SEE WHERE
STOCH 3.1.4 IS, IF TF 15 STOCH IS IN AREA 10 MAKE SURE THE TF M1 STOCH IS
UNDER LEVEL 50 AND YOU ARE UNDER LEVEL 50 CAN DO ENTRY BUY AND LAYER.
8. TO MAKE AN ENTRY SELL **HOW** FROM TF M15 CHANGE TO TF M1 AND SEE WHERE
THE STOCH 3.1.4 IS, IF TF M15 STOCH IS IN AREA 90 MAKE SURE THE TF M1 STOCH
IS IN AREA ABOVE LEVEL 50 AND YOU ARE ABOVE LEVEL 50 CAN DO ENTRY SELL
AND LAYER.
9. MAKE SURE THE STOCH POSITION IN TF M15 AND M1 ARE PARALLEL TO SELL/BUY AND
ALSO IN LINE WITH THE INSTRUCTIONS IN THE STOCK **MARKET. (YOU WILL GET SHARP
ENTRY)**



PENERANGAN SECARA BERGAMBAR

ADALAH SEPERTI DI BAWAH :



**SILA BACA STEP BY STEP DAN
FAHAMKAN KEMUDIAN CUBA DI DEMO
AKAUN SEBAGAI LATIHAN BEBERAPA
KALI SEBELUM CUBA DI REAL**

AKAUN...!!!



ENTRY SELL

STEP 1



PASTIKAN STOCH 3.1.4 BERADA PADA LEVEL 90 PADA TF M15
CONTOH (USDCAD)



STEP 2



PASTIAN STOCK MARKET USDCAD MERAH (STRONG SELL)

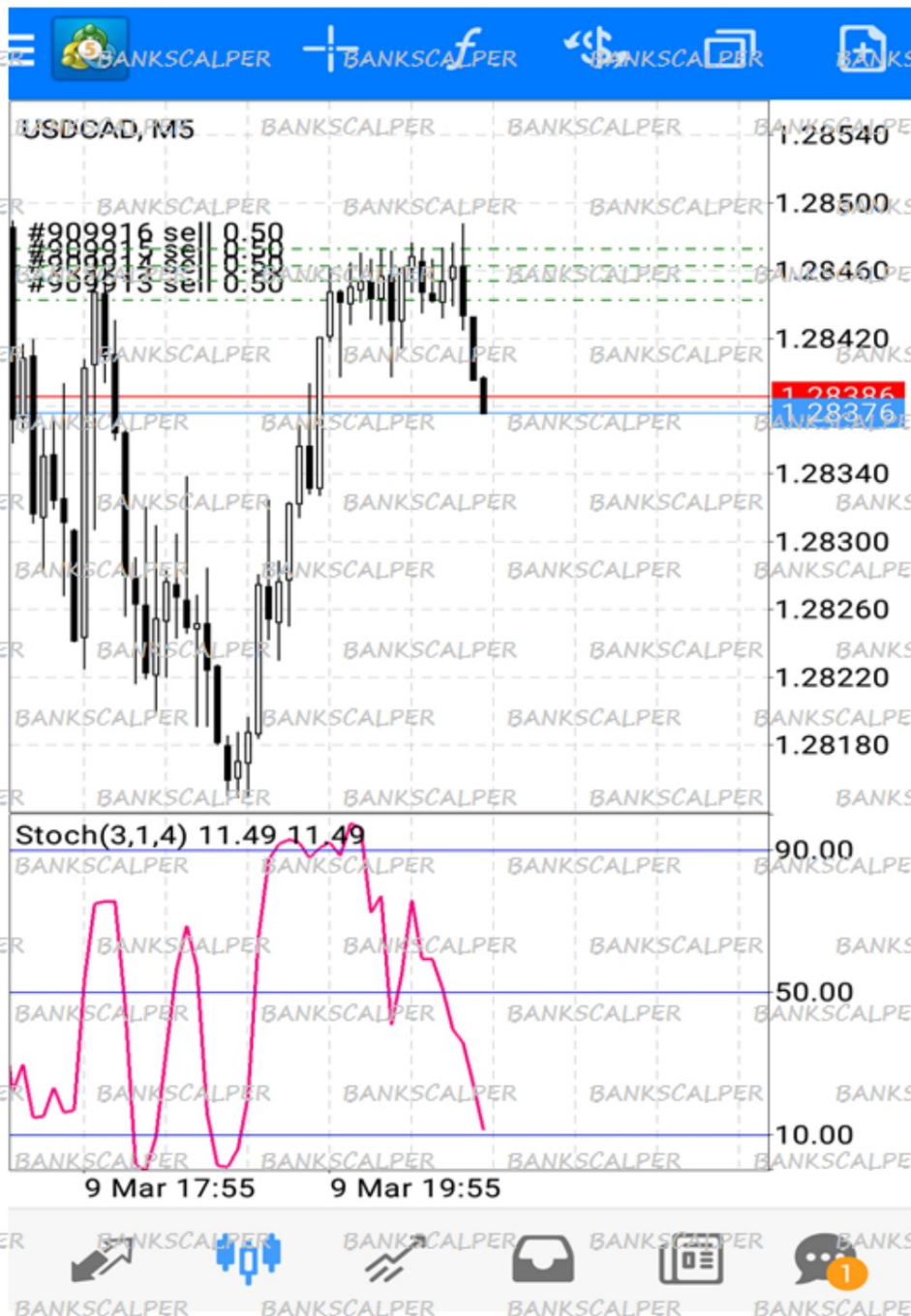
TELETRADER			Market Overview		
Rate on Google Play					
EUR/USD Spot			EUR/GBP Spot		
1.23206			0.88892		
H 1.23343 +0.00073			H 0.89262 -0.00239		
L 1.22733 +0.06%			L 0.88750 -0.27%		
GBP/USD Spot			USD/CHF Spot		
1.3860			0.9498		
H 1.3889 +0.0045			H 0.9534 -0.0012		
L 1.3788 +0.33%			L 0.94188 -0.13%		
USD/JPY Spot			AUD/USD Spot		
106.8095			0.7845		
H 107.0470 +0.5480			H 0.7854 +0.0055		
L 106.1645 +0.52%			L 0.7777 +0.71%		
USD/CAD Spot			NZD/USD Spot		
1.2844			0.7288		
H 1.2909 -0.0052			H 0.7298 +0.0025		
L 1.2815 -0.40%			L 0.7250 +0.35%		
USD/RUB Spot			BTC/EUR		
56.66170			7 240.0698		
H 57.12055 -0.43785			H 7,658.48006.3000		
L 56.58680 -0.77%			L 6,799.1201 -4.06%		
BTC/USD			Gold		
8 902.2100			1,323.10		
H 9,420.38983.1100			H 1,325.15 +0.80		
L 8,366.0000 -4.13%			L 1,313.36 +0.06%		
BCH/USD			F BTC 3/18		
977.1400			8,815.0000		
H.. -53.2600			H 9,445.000030.0000		
L 914.6400 -5.17%			L 8,890.0000 5.67%		
Silver			Platinum		
16.59			963.50		
H 16.69 +0.10			H 964.00 +10.50		
L 16.37 +0.60%			L 948.00 +1.10%		
Palladium			Copper BM		
996.00			WTI		
H 997.00 +18.50			Brent		
L 972.00 +1.89%					
Markets			Watchlists		
Portfolios			News		
More					

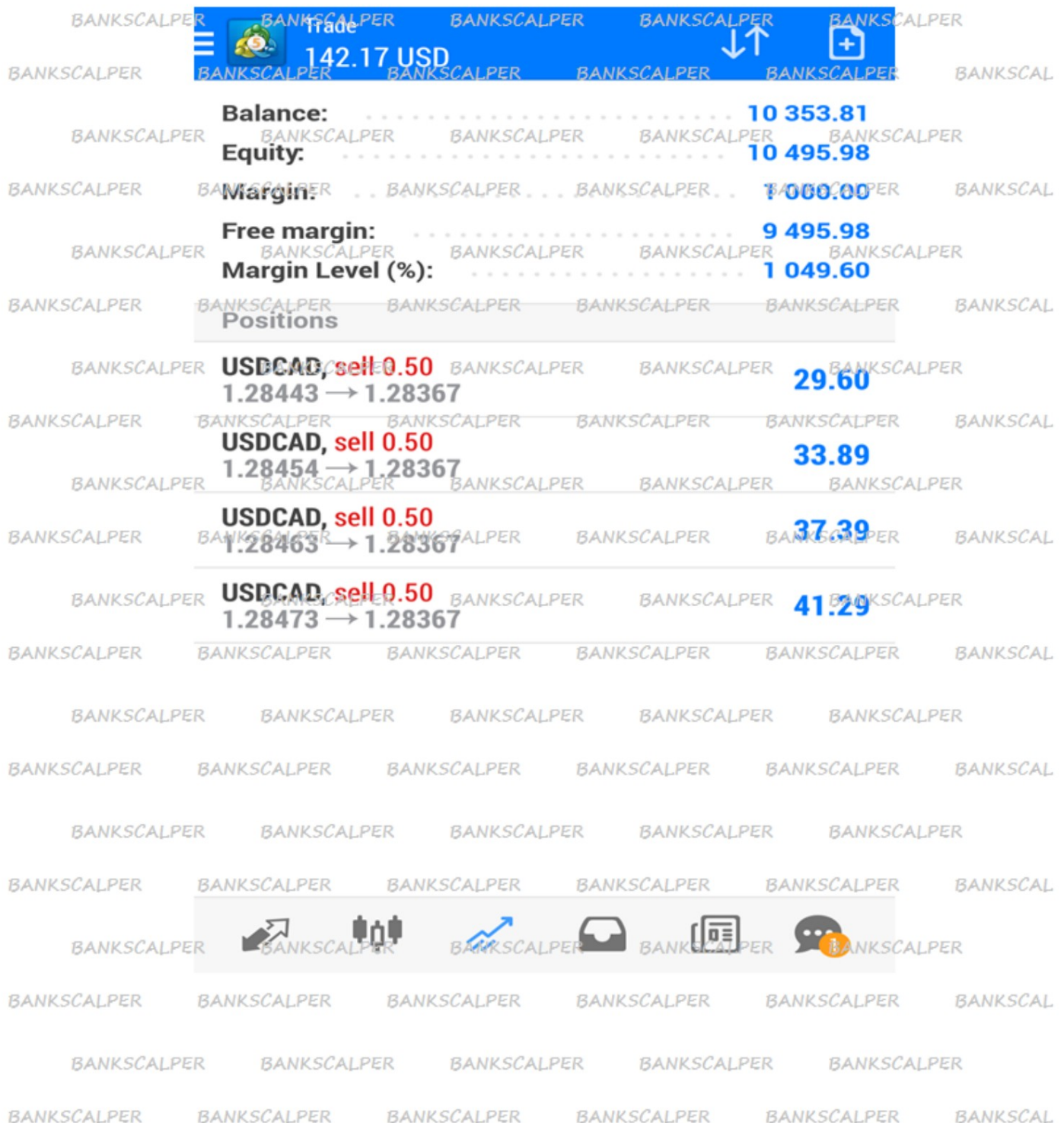
STEP 3

PASTIKAN STOCH 3.1.4 DI TF M1 BERADA DI LEVEL ATAS 50 DAN ANDA BOLEH ENTRY SELL. UNTUK KETEPATAN BOLEH TUNGGU STOCH DI M1 BERADA DI LEVEL 90 JUGA TETAPI ADA MASA STOCH TIDAK SAMPAI KE LEVEL 90 SO CUKUP STOCH BERADA DI ATAS LEVEL 50 SUDAH BOLEH SELL.



LIHAT HASILNYA





SAYA TIDAK MELETAKKAN TP DAN SAYA AKAN CLOSE ALL POSITION APABILA SEMUA ENTRY SUDAH BIRU ATAUPUN SUDAH CUKUP PROFIT SECUKUP RASA. INILAH GAYA SCALPING SAYA.

ENTRY BUY

STEP 1



PASTIKAN STOCH 3.1.4 BERADA PADA LEVEL 10 DITF

M15. CONTOH (GBPCAD)



STEP 2

**PASTIKAN STOCK MARKET GBPCAD HIJAU (STRONG BUY)
P/S UNTUK GAMBAR EURGBP INI TIADA DALAM STOCK MARKET GAMBAR
YANG DI PAPARKAN INI SEBAGAI ILUSTRASI SAJA YA. SEMASA ANDA TRADE
NANTI PASTIKAN PAIR ADA DI STOCK MARKET DAN PASTIKAN IA HIJAU...!!**



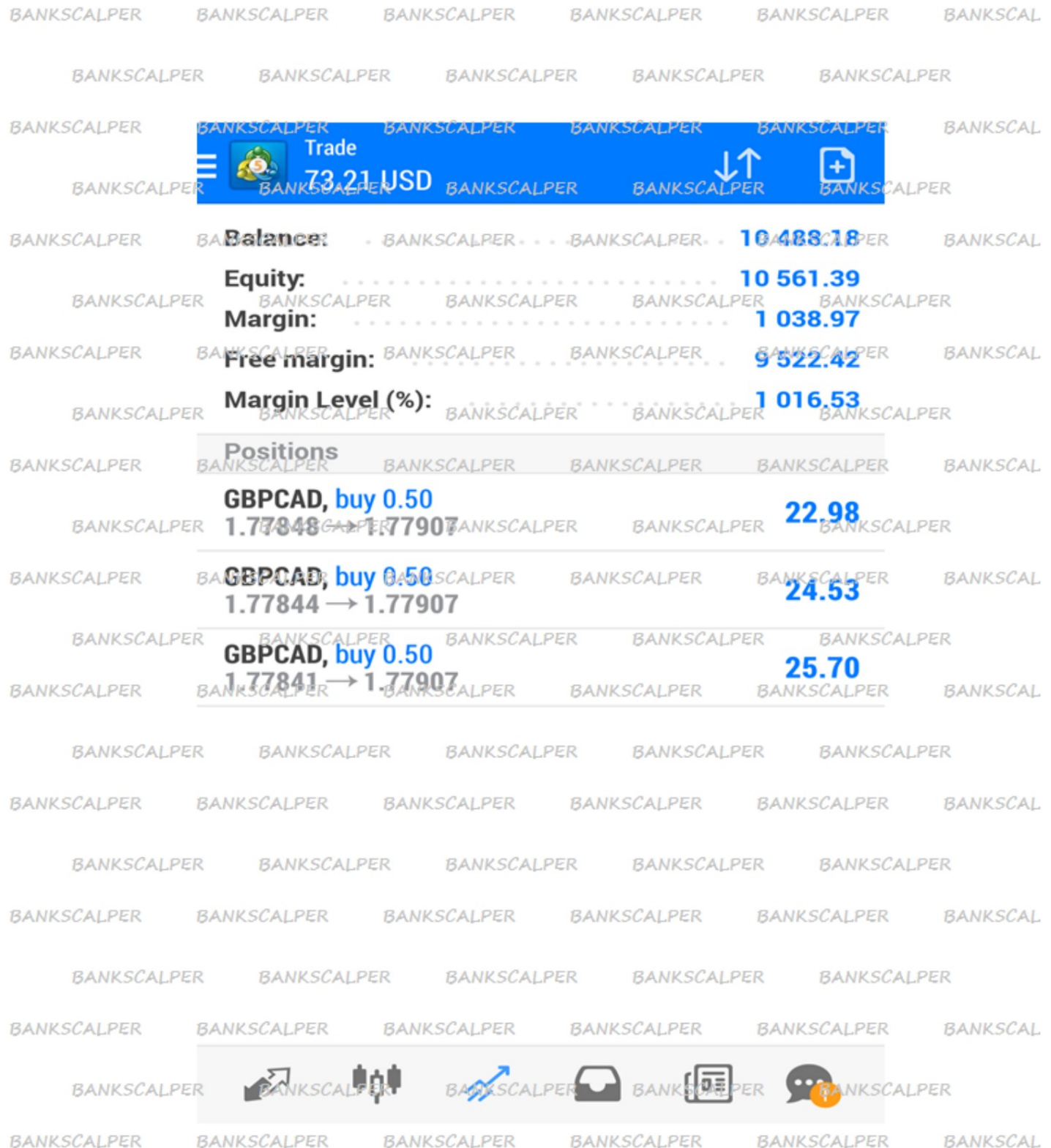
STEP 3

PASTIKAN STOCH 3.1.4 DI TF M1 BERADA DI BAWAH LEVEL 50 DAN ANDA BOLEH ENTRY BUY. UNTUK KETEPATAN BOLEH TUNGGU STOCH DI M1 BERADA DI LEVEL 10. JUGA TETAPI ADA MASA STOCH TIDAK SAMPAI KE LEVEL 10 SO CUKUP STOCH BERADA DI BAWAH LEVEL 50 SUDAH BOLEH BUY.



LIHAT HASILNYA





SAYA TIDAK MELETAKKAN TP DAN SAYA AKAN CLOSE ALL POSITION APABILA SEMUA ENTRY SUDAH BIRU ATAUPUN SUDAH CUKUP PROFIT SECUKUP RASA. INILAH GAYA SCALPING SAYA.

SEMOGA DAPAT MEMBERI MENAFAAT
YANG BERGUNA

SEKIAN

SEKIAN

TERIMA KASIH

TERIMA KASIH

