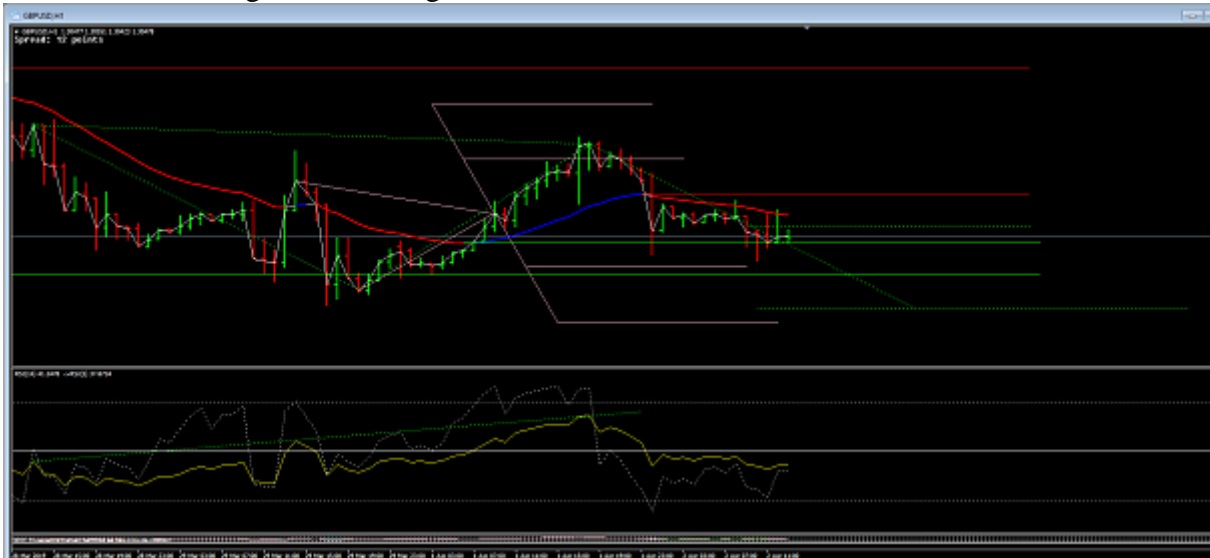


Nala66

Apr 2, 2019 6:19am | Post# 2639

1 Attachment(s)

The 1 hour is sitting on the average



Nala66

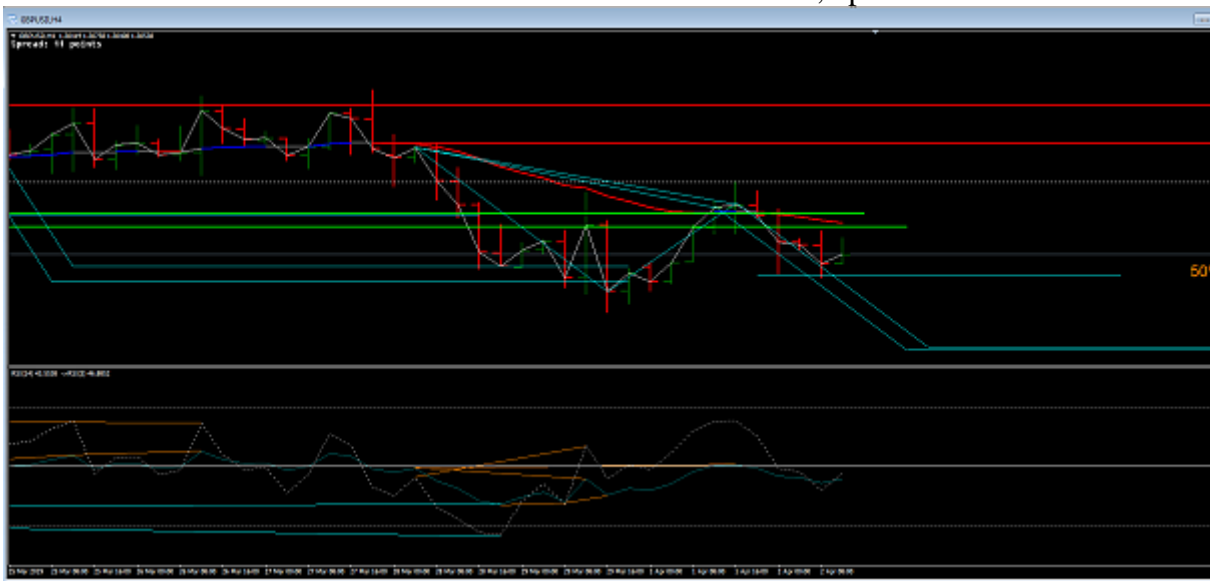
Apr 2, 2019 6:55am | Post# 2640

1 Attachment(s)

Notice on the 4 hour chart Jazz posted price has already found bear support.

Then look at my chart below and see how it has not found support.

This is because different brokers close the 4 h at different times, up to two hours difference.



Nala66

Apr 2, 2019 7:18am | Post# 2642

[Quoting huskyboy](#)

Disliked

{quote} Thx Alan for your time and strategy, but could you please explain why you took that first entry long. At that point i was looking to get in short and i believe i wasn't the only one 🙄

It was a bull divergence, but when I see it is not making the EMA I tighten the stop to BE. As for the 1 hour inference the price was at the swing average level a ZOO point.

Then there was another bull div which I did not take but then I did the third one.

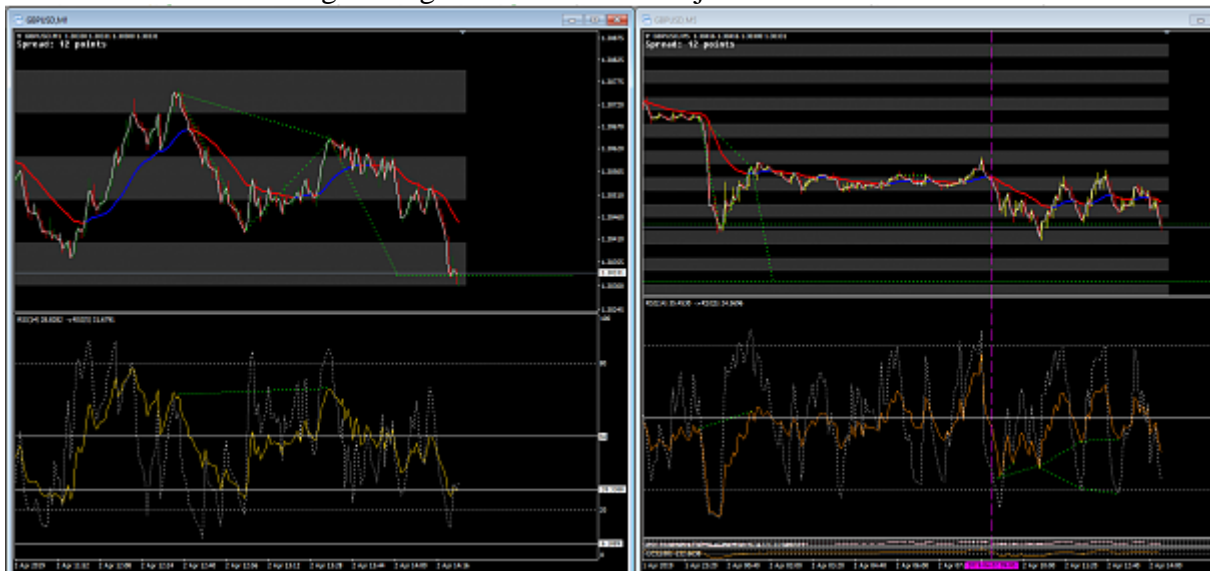
A funny thing about regular recurring divs like this is that price will generally return to the first incidence at least.

Nala66

Apr 2, 2019 7:26am | Post# 2643

1 Attachment(s)

Looks like that 5 min target is a goer now. The 1 min just hit.



Nala66

Apr 2, 2019 8:03am | Post# 2648

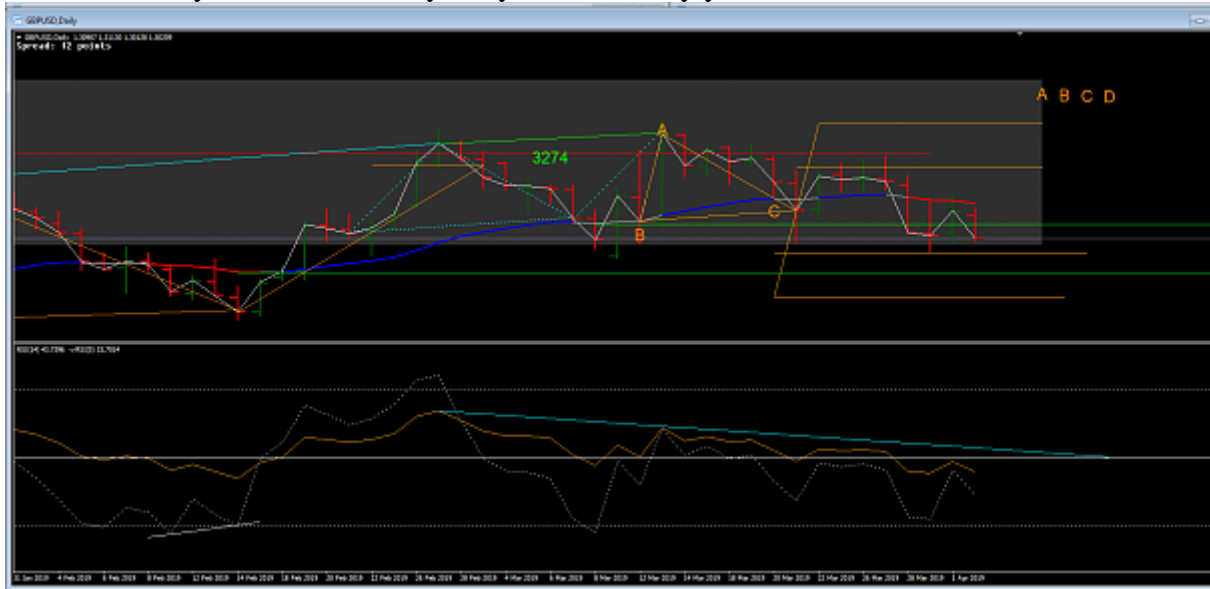
1 Attachment(s)

[Quoting huskyboy](#)

Disliked

daily target hit, out at ema swing low

Not sure what you mean here. My daily is miles away yet.



Nala66

Apr 2, 2019 7:07pm | Post# 2651

1 Attachment(s)

So overnight I see the bears failed to find support on the daily (so far) and the 4hour.

On the Daily it bounced off the 50% ABCD a couple of days ago.

On the 4H it bounced off the 50% ABCD

Stopping the further fall of average on both these charts

On the 1H price bounce off the 3009 average stopping the average making the 3040 average.

So that was a failed LL so we look for the success of a HH average.

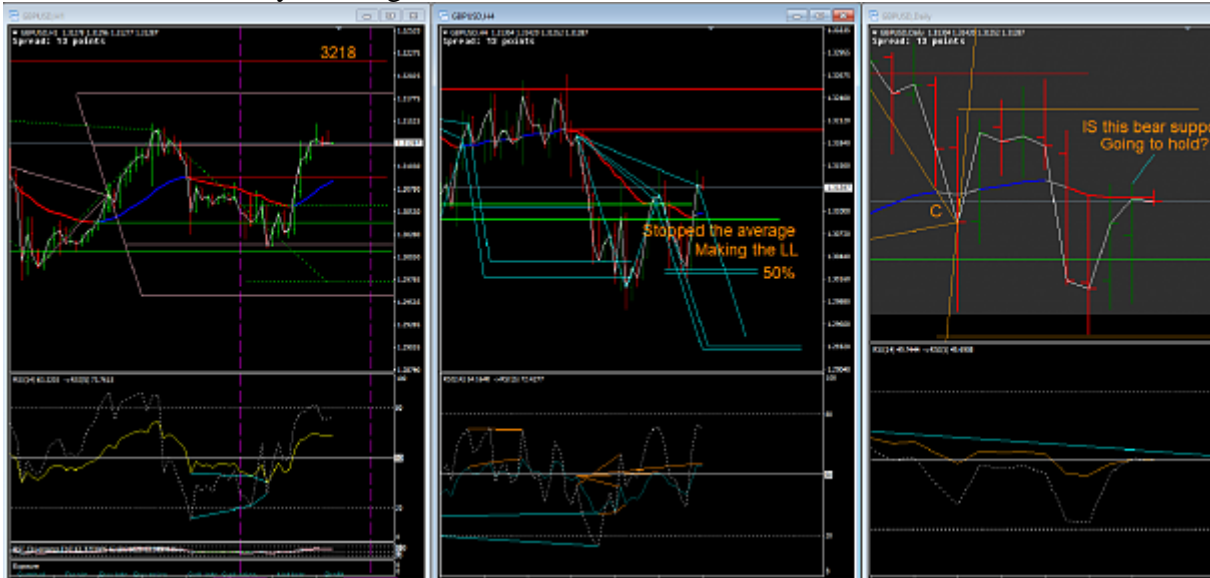
The question for today..

1) Is whether the daily bear support is going to hold or not as it is just below the EMA at the close.

2) Are the bulls looking for support now on the 4H

3) How much of a HH is the average going to make on the 1H, can price reach the 3218

We'll find out in today's trading session.



Nala66

Apr 2, 2019 11:07pm | Post# 2655

1 Attachment(s)

[Quoting davidmaree](#)

Disliked

{quote} 4H below Alan. Tried to redraw that daily divergence but still cannot get a touch using my data feed. {image}

Weird isn't it yet your 4H looks like mine with no bear support and currently with a bull support.

I don't put much faith in these long time frames, they are just a point of interest. When the action gets going the 5 min is plenty for me.

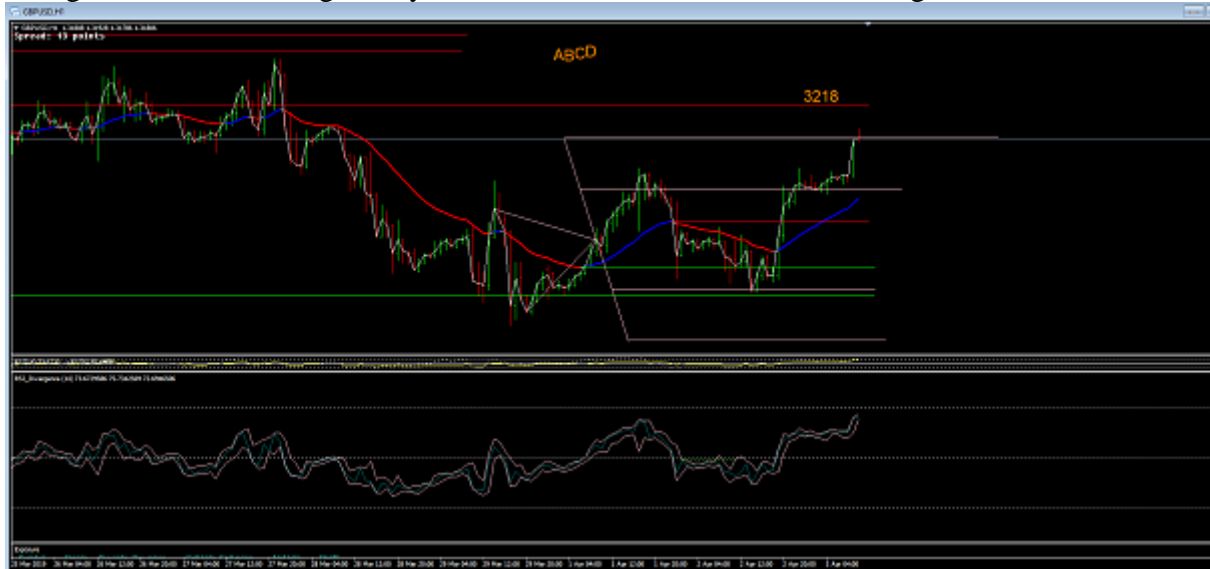


Nala66

Apr 3, 2019 3:17am | Post# 2660

1 Attachment(s)

Straight to the 1 hour target Maybe even the 3218 as I said this morning



Nala66

Apr 3, 2019 5:02am | Post# 2669

1 Attachment(s)

[Quoting forex_dimi](#)

Disliked

Alan I have a question in the morning trade. As mentioned this period I dont trade cable, but I am looking it just not to loose the "touch". As others mentioned I was looking also the short option (just before the yellow vertical line - is Frankfurt open), because of the divergence, but market didn't give the opportunity to take it. The long option would have been the rejection of the EMA in the rectangle? Was it another clue (in 5min chart) to take the long? {image }

It was full of clues. I keep repeating to you guys watch the average and compare it to the previous average. Don't compare price to average.

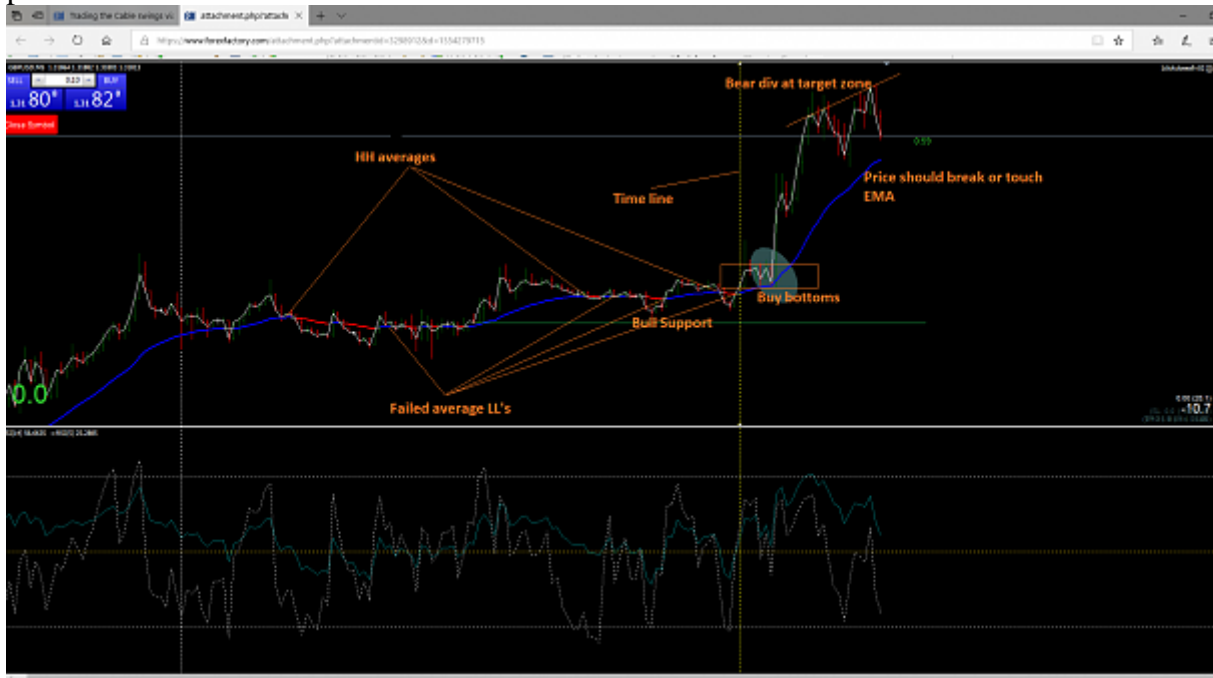
You just need to know if we are trading above the average or below it from a position of support,

See below the average is making HH's and HL's on the higher time frames price is trading above the average for the inference.

The bears tested the bull support a couple of time during the day but failed.

At our timeline we had a knot in the cotton so the bottoms of the rectangle were the buy

points.

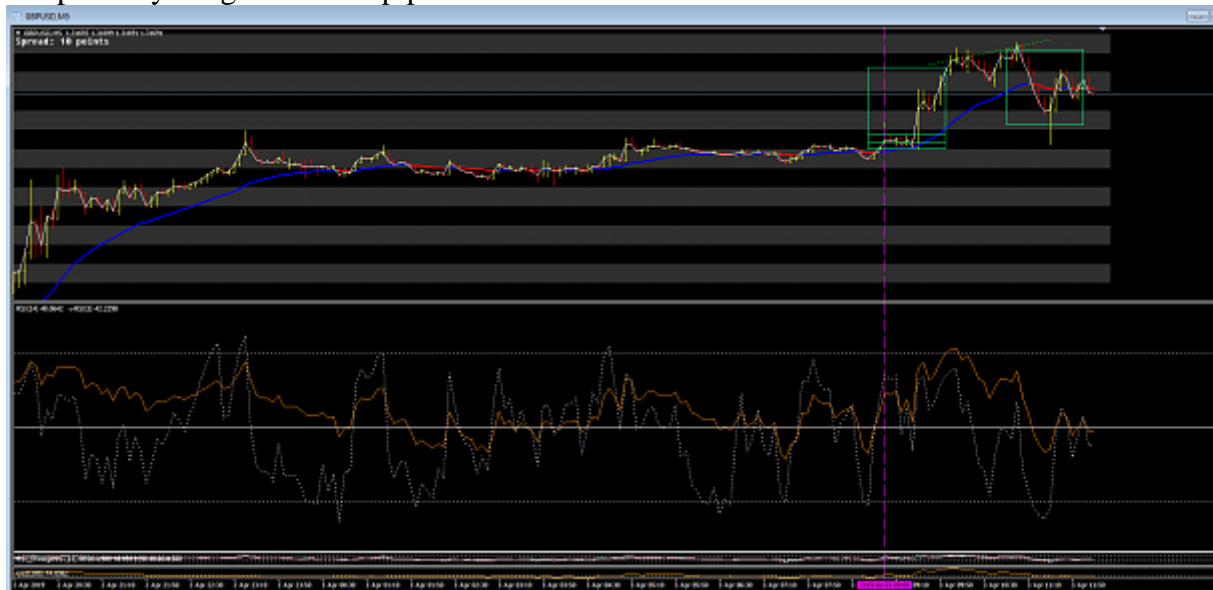


Nala66

Apr 3, 2019 5:11am | Post# 2670

1 Attachment(s)

I hope everyone got there 40 pips from the 5m div short.



Nala66

Apr 3, 2019 7:39am | Post# 2682

1 Attachment(s)

[Quoting forex_dimi](#)

Disliked

Have also question if ABCD patterns exist in the charts below. (in the 1st one the divergence is clear, just asking for the ABCD pattern if it is correctly drawn. {image} {image})

I don't know what your first chart is all about.

On the second chart you have completely missed the Continuation Div

If you guys insist on keep drawing sloping lines to connect the pivots you will be wrong most of the time.

Look where C is on the RSI and look where C on the price (Aqua level) Between the two vertical lines

On the larger ABCD this happened after the first target was hit and pushed up to the 50% level.



Nala66

Apr 3, 2019 8:25pm | Post# 2685

1 Attachment(s)

[Quoting forex dimi](#)

Disliked

{quote} I know it is getting annoying 🙄

The 4H chart looks to me like it is all drawn correctly. HOWEVER this is a 4 hour chart and they vary quite a lot according to individual brokers closing the bars at different times. I don't trust this chart too much because of that reason alone.

Here are both mine and your charts side by side and they are totally different structures.

Look at where mine found bull support and then overnight retested it. Your chart has none of that.

On the plus side you had that bull div at the bottom where I did not.

Crazy isn't it, how can we hope to make sense of 4 hour charts.

Only trust charts up to and including the 1 hour.



Nala66

Apr 3, 2019 9:12pm | Post# 2686

I am not at all bothered about what shape or form the market makes over the course of the 24 hour period.

For me my task is to make my 40 pips at the appropriate time and within a reasonable space of time. This is an efficient use of my time.

I don't care if the price moves 100's of pips, I am not sitting here day after day waiting for that to happen when I can get my 40 just about everyday in a short space of time.

I start to look for work around bar 108 on the 5 min chart which says 0900 on the chart. I don't move it because of time differences, it stays the same always.

Starting work for me means looking at the averages and trying to work out the most likely direction. Then looking for signals to take me in that direction. If I am wrong the signal will fail and I will be stopped out usually for BE and then I can change my direction if need be.

So right time and place, signal, target, result, done and dusted. All the other stuff is just other stuff.

The reason for this other stuff is because many will not trust in the money management so they go off on a tangent with risk/reward, percentages and such hoping to milk every pip from the market. I too have done all this risk 1% to get 2% stuff and how many traders do that and fail I shudder to think. I have sat for days trying to get back just to BE on trades wasting a lot of time and carrying all the stress related to that and for nothing.

There is not much I haven't tried over the years and from that have gained a huge amount of experience. Now I have put all that experience into one package that works well for me. At a glance I can see a signal and I also know the risk but more importantly accept that risk. This is because I have faith in what I do and that faith only comes from experience.

I can't teach people to trade, there are so many variables. All I can do is show the key points I am interested in to make the profit I require.

Others may say they trade such and such, well that is just of a passing interest to me. My trading is so regimented it is actually boring, just a job to be done each day.

Gees another sermon...

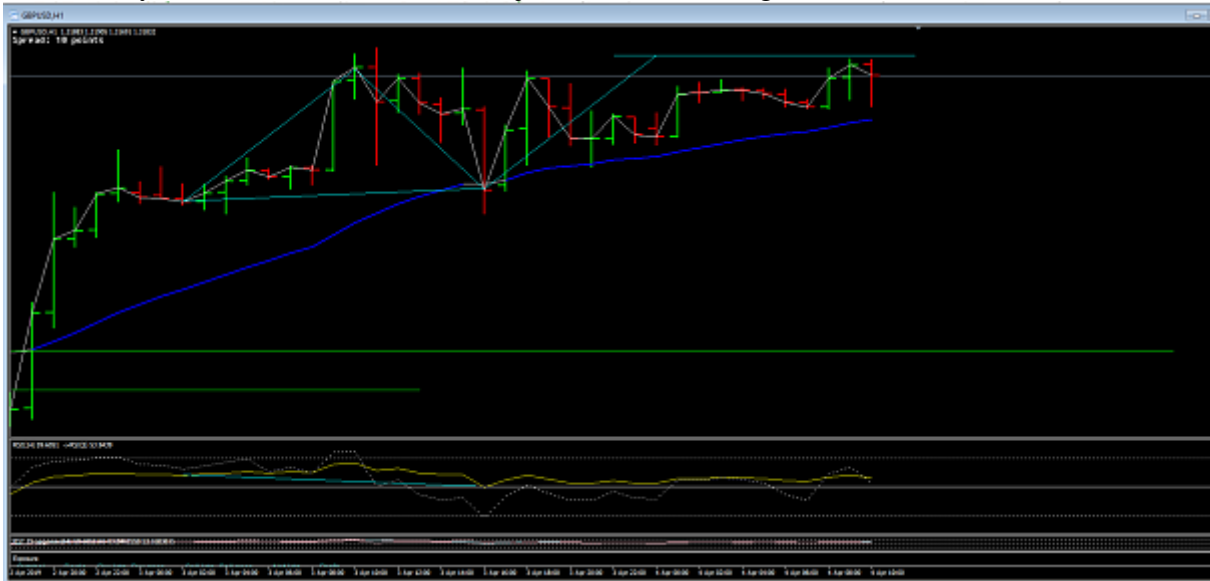
Amen

Nala66

Apr 4, 2019 3:52am | Post# 2729

1 Attachment(s)

I think Mayflower is correct it has been just short of the target so far.



Nala66

Apr 4, 2019 7:16pm | Post# 2739

1 Attachment(s)

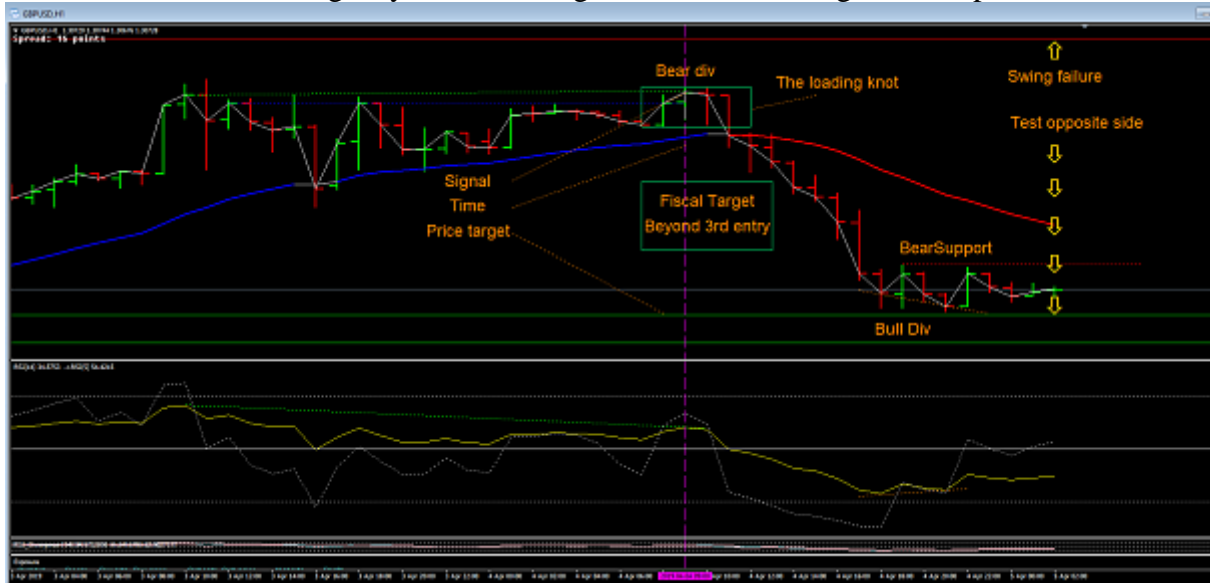
Putting the ABCD's aside, this one hour chart is an absolute classic textbook example of price movement.

- 1) Finds bear div
- 2) Stops and turns average causing failed HH swing
- 3) Fails on one side so test the opposite.
- 4) Price test swing low average.
- 5) Bears find support.
- 6) The bulls have a div but can't break the bull support.

- 7) So now we should see a price LL

What did I do about it? Watched the Crows get hammered again.

Note how I was the wrong way in the loading knot but still managed to scalp a few



Nala66

Apr 5, 2019 7:25pm | Post# 2751

1 Attachment(s)

Here you go continuing that 1 hour chart. See how price has acted exactly as it should.

Fails the average HH

Test the average LL

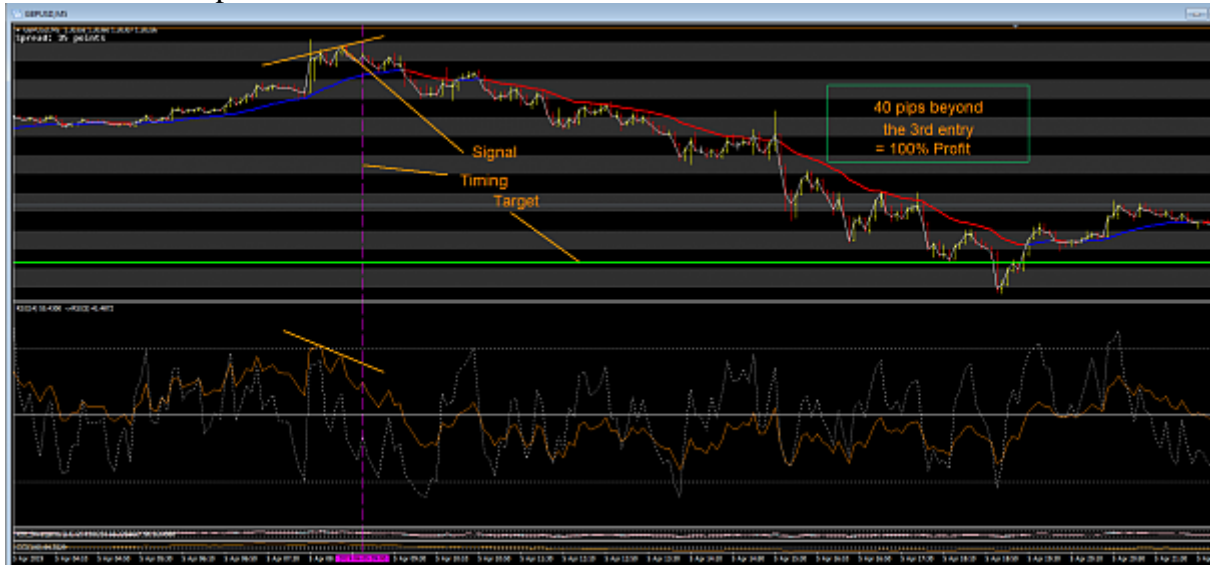


Nala66

Apr 5, 2019 7:37pm | Post# 2752

1 Attachment(s)

So how did that pan out on the 5 min chart



Jazz1964

Apr 6, 2019 4:14am | Post# 2754

1 Attachment(s)

there was quite a nice reaction to the H1 ABCD 50% and the AB=CD



Nala66

Apr 6, 2019 4:24am | Post# 2755

[Quoting quangvision](#)

Disliked

{quote} Hi Alan, How can you say "fails the average HH" while it not making average LL yet, for example? So the right way to say "fails average HH" ONLY WHEN you see it made average LL, right? I took the trade sell on the bar 12:00 H1 with inference is previous bar 11:00 closed below average and bar 12:00 opened right on the average.

This is unbelievable after all I have said. How on Earth can you get this so wrong!

Nala66

Apr 6, 2019 4:46am | Post# 2756

[Quoting Jazz1964](#)

Disliked

there was quite a nice reaction to the H1 ABCD 50% and the AB=CD {image}

Not bad at all Jazz you have now progressed to having all three points on the ABCD wrongly placed.

- A) You have not picked the highest high.
- B) Does not line up with the RSI pivot, but you have picked the right one on the price.
- C) Is wrong on the price and that point can't even be seen on the RSI, a pivot is blocking it.

Jazz1964

Apr 6, 2019 4:59am | Post# 2757

1 Attachment(s)

[Quoting Nala66](#)

Disliked

{quote} Not bad at all Jazz you have now progressed to having all three points on the ABCD wrongly placed. A) You have not picked the highest high. B) Does not line up with the RSI pivot, but you have picked the right one on the price. C) Is wrong on the price and that point can't even be seen on the RSI, a pivot is blocking it.

Aiii, thank you



Nala66

Apr 9, 2019 6:42am | Post# 2793

1 Attachment(s)

OK ... When the session begins I tend to watch the 5 min intently for the signals produced there.

For this I need to show the two RSI indicators.

The first was a bull RSI div (D1) but the run up ran into a bear div so we either close or hedge depending on your circumstance.

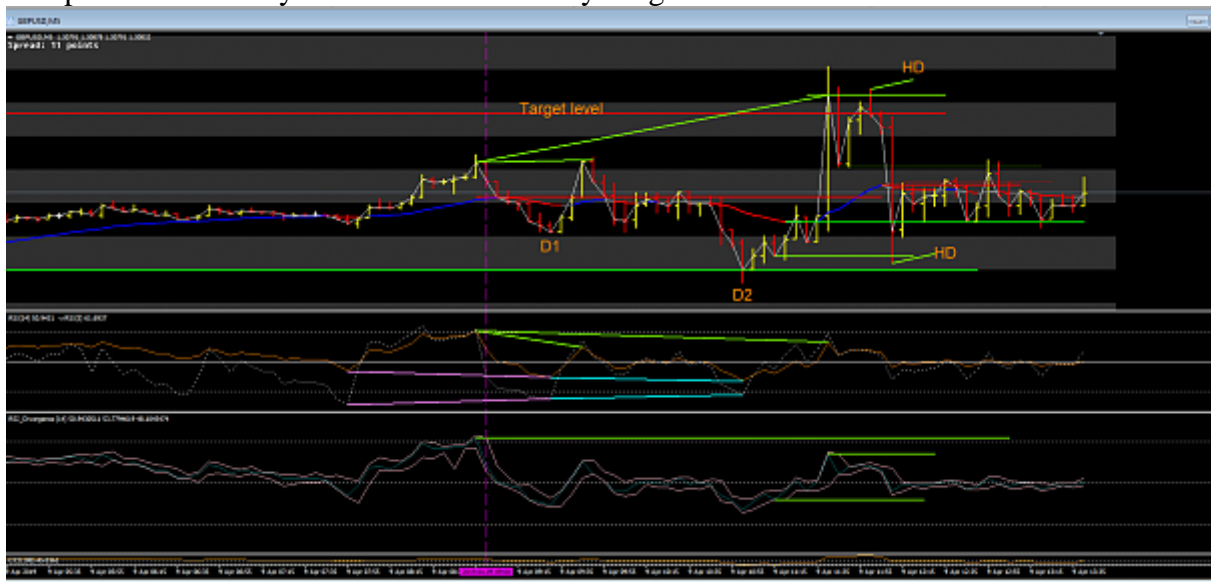
The run down went to another RSI div (D2) so it was now set up to pass the latest swing high average which it did convincingly with an impulse bar taking it to and above the target level.

This then pulled back because it was a reg bear div. but the bulls found support (dotted green).

From the support the price ran up and into trouble with A HD sending it back below the EMA where it then ran into another HD of a bullish nature..

Now the price action is contained between the two average swings.

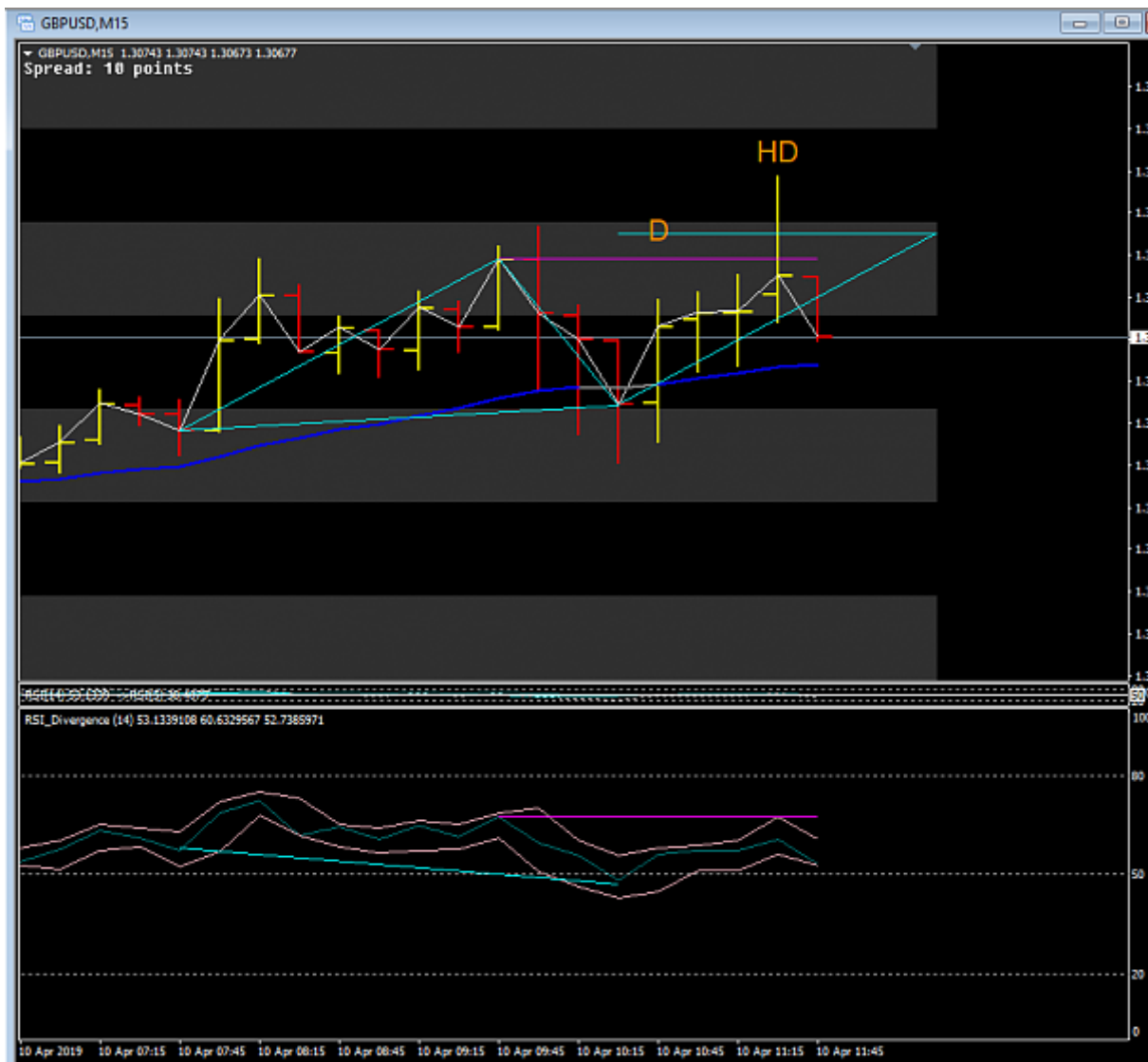
The point is that every move was indicated by a signal on the 5 min chart.



Nala66

Apr 10, 2019 4:48am | Post# 2821

1 Attachment(s)



Nala66

Apr 10, 2019 4:55am | Post# 2822

[Quoting ZenNy](#)

Disliked

hi there, is there a post in this interesting thread which summarise clearly specific entries and exits, something like this: Long entries: (on the 5m TF)prices below the 26 ema, RSI (5 and 14) oversold, both showing bullish divergence, RSI (5) > RSI (14). Long exits: (on the 5m TF)prices crosses above 26 ema, prices hits previous high, both RSI showing bearish divergence. Filter: Prices on the hourly time frame above the 26 ema. I thank you in advance. Not really if only life was that simple hey.

I have shown the key points to watch for and the underpinning reasons for everything I have stated.

Nala66

Apr 10, 2019 8:53am | Post# 2828

1 Attachment(s)

[Quoting ZenNy](#)

Disliked

{quote} Thanks anyway....I will read more...anyway went short 3080, targeting 3055...
Better if you state why you went short so we can see the reasoning behind it.

Something like this



Nala66

Apr 10, 2019 10:26pm | Post# 2833

1 Attachment(s)

[Quoting quangvision](#)

Disliked

{quote} Hi Alan, How can you always take very precise entry points? While I did see those signals and took the trade and lost. Can you give some ideas on these? Thanks 😊 {image}

I would ask why are you looking to short the market in the first place since the 1H has been above the EMA all day. You should be looking for the pull backs to go long.

Once the hour has reached a ZOO point then look to short.

Now if you are intent on taking the shorts on the 5m signals you have to bear in mind always these are just scalps or hedges because you are trading above the EMA. This means you have to move those stops to BE and be prepared to be stopped out. This happens a lot with scalps because you are just guessing that it is a turnaround point, sometimes you can be right

though.



Nala66

Apr 10, 2019 10:44pm | Post# 2835

1 Attachment(s)

I haven't put them all on this 1H chart but you should be able to see plenty of ZOO points here to be traded at the 5 min level.

If you just trade the 5m level alone without any reference to the 1H chart you may only be looking at a couple of pips.

Taking the inference from the 1H is going to produce many more pips per trade. It has a high probability of making the 40 pips. Some of your 1H inferences may fail also. We are dealing with probabilities here not certainties, I get stopped out heaps of times for BE's or small losses. That is par for the course when trading the trick is to push hard when winning and compound it for a huge risk/reward.



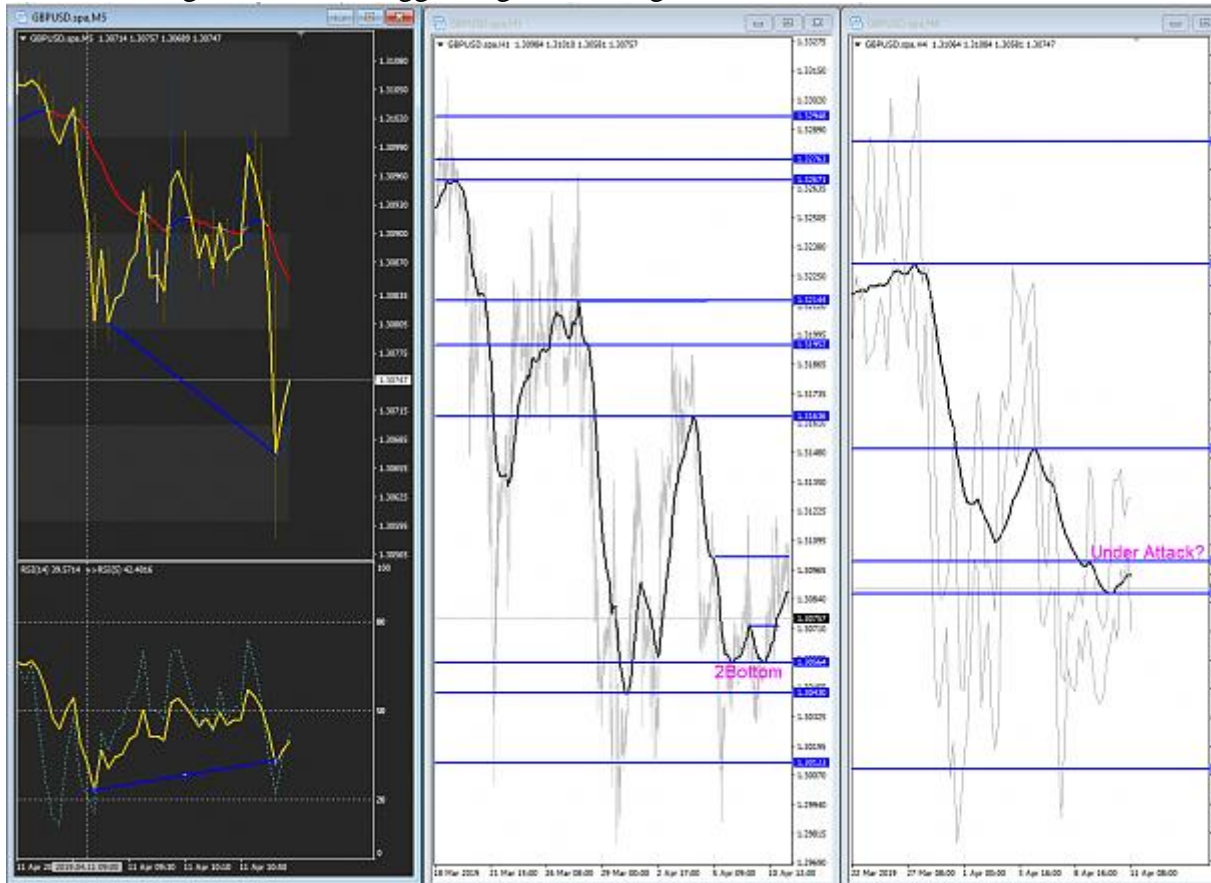
Jazz1964

Apr 11, 2019 4:35am | Post# 2846

1 Attachment(s)

The H1 guides with an EMA double or triple bottom and made a new high. The spike down stopped at H1 EMA swing low which was my ZOO

The M5 divergence was the trigger to get in a Long



Nala66

Apr 11, 2019 6:38am | Post# 2853

[Quoting Jazz1964](#)

Disliked

The H1 guides with an EMA double or triple bottom and made a new high. The spike down stopped at H1 EMA swing low which was my ZOO The M5 divergence was the trigger to get in a Long {image}

Exactly the way to do it...Well done Jazz

Nala66

Apr 11, 2019 6:50am | Post# 2854

1 Attachment(s)

[Quoting quangvision](#)

Disliked

{quote} Hi Alan, you got any trade executed for today yet?

Yep all done



Nala66

Apr 11, 2019 8:52am | Post# 2855

1 Attachment(s)
3 stage entry

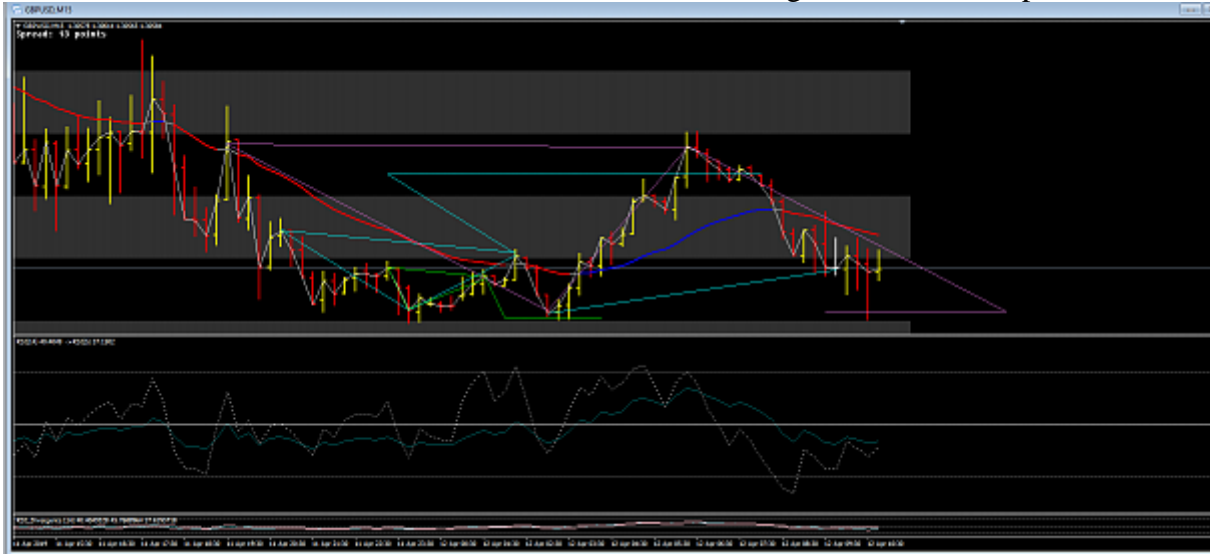


Nala66

Apr 12, 2019 3:50am | Post# 2863

1 Attachment(s)

If we look at this current 15m chart we see the latest three target have been setup and reached.



Nala66

Apr 12, 2019 3:56am | Post# 2864

1 Attachment(s)

[Quoting forex_dimi](#)

Disliked

{quote} Thanks for posting ABCD's those are really helpful, but I am not sure if this one is correct. I would appreciate whether Alan could comment if this is a right one

My 1H looks like this...



Nala66

Apr 12, 2019 5:57am | Post# 2871

1 Attachment(s)

[Quoting quangvision](#)

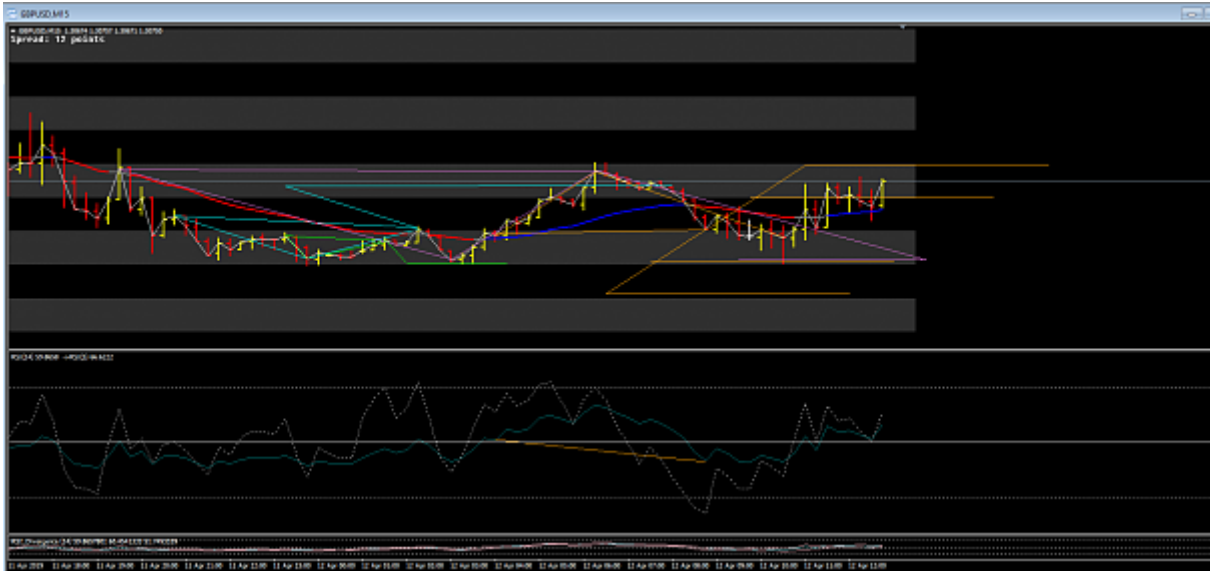
Disliked

{quote} Hi Alan, Is there any trade executed yet?

Not by me, the range just seems to be too tight to bother.

Take a look at this continued 15 min chart, the distances are nothing much to get excited

about



Nala66

Apr 12, 2019 8:30am | Post# 2873

1 Attachment(s)

Not that I am trading today, busy with other stuff.

It looks like it may make a run for this target on the hour since it has already tried three times.



Nala66

Apr 23, 2019 7:21am | Post# 2885

1 Attachment(s)

Hope you guys had a great Easter break I had a ball teaching the Grandkids to fish. We all caught and ate our catches.

Back to trading I see the 1 hour finally after nine days or so hit the continuation target to the south side.

Let's hope business picks up a tad from here.

I will start trading again tomorrow.



Nala66

Apr 24, 2019 1:28am | Post# 2887

1 Attachment(s)

[Quoting quangvision](#)

Disliked

{quote} Hi Alan, welcome back! There was nothing to trade much last several days 😊

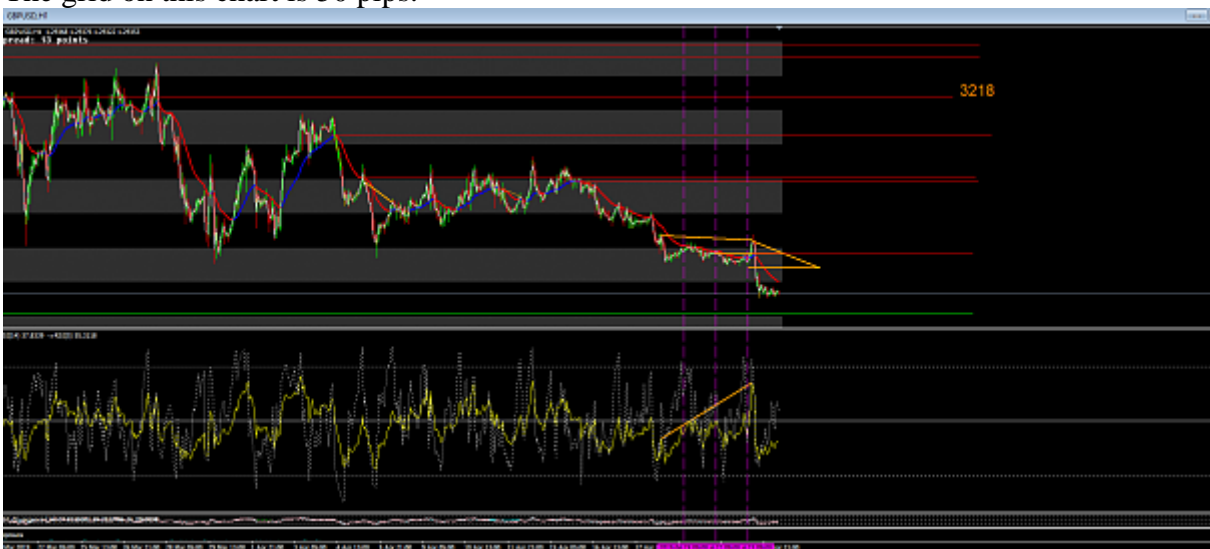
Yes I see that not much at all hey!.

I see there was a nice setup on the 1 hour yesterday for another continuation div that exceeded its target in a hurry.

So this makes me think business is looking up.

Just remember wait for the signals and don't try to guess the market.

The grid on this chart is 50 pips.



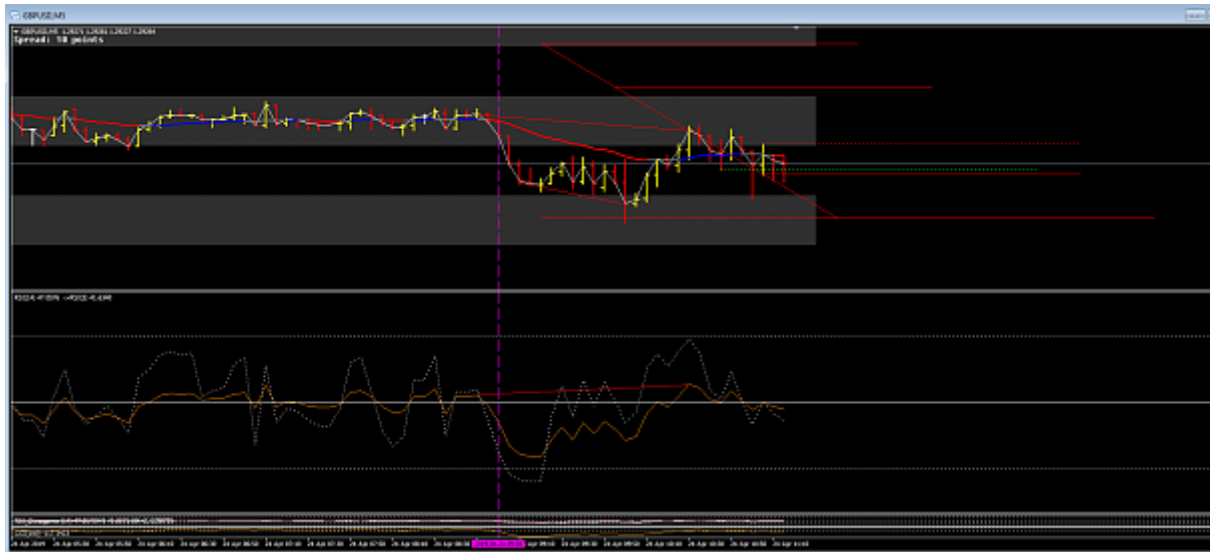
Nala66

Apr 24, 2019 4:13am | Post# 2892

1 Attachment(s)

I close longs the bears are trying hard to break this bull support. In fact the bears now have support on the 5 min.

This is ridiculous



Nala66

Apr 25, 2019 2:02am | Post# 2895

1 Attachment(s)

Well there you go it did make the 2904 average. Now let's see if the average can make this LL also.

On the 1H for a bullish trade we would now be looking for a div to take price back across the ema and for the bulls to find support there.

If nothing changes then it remains the same so currently we are still looking for bear trades.

The bears have supports at 2963 and 2930 whereas the next bull support is down at 2807.

Also on this 1 hour chart we have an AB = CD targeting 2857



Nala66

Apr 25, 2019 7:14am | Post# 2901

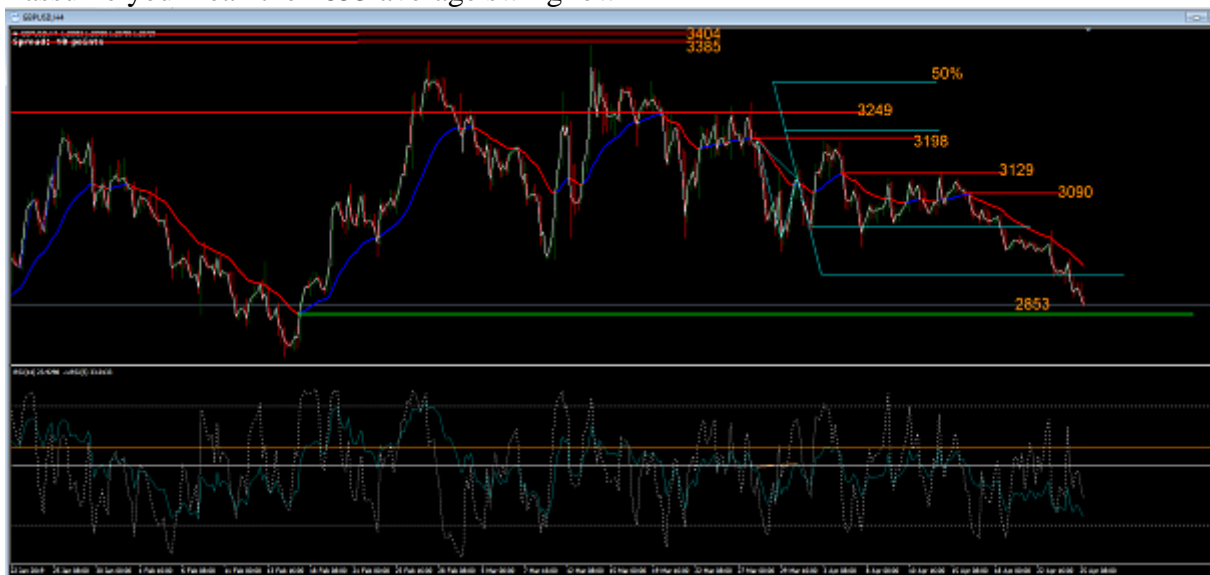
1 Attachment(s)

[Quoting mikeeating](#)

Disliked

almost at a H4 target

I assume you mean the 2853 average swing low



Nala66

Apr 26, 2019 12:44pm | Post# 2911

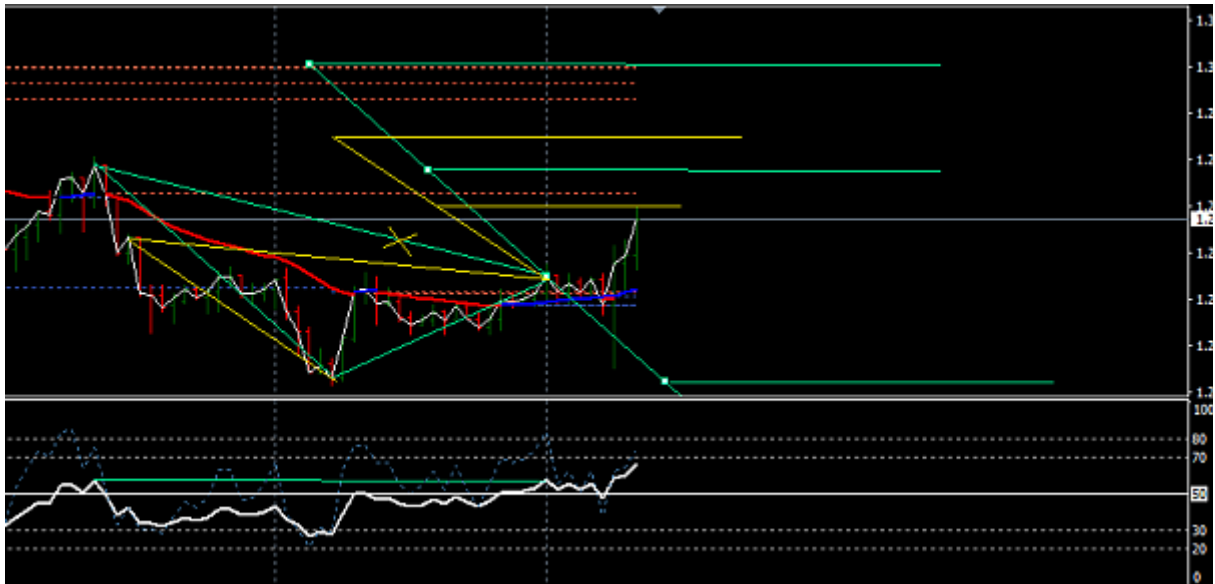
1 Attachment(s)

[Quoting priyank20](#)

Disliked

{quote} Hey Alen, Is this correct, on 1 hour {image}

When drawing these you must look at the pivot being attacked. We cannot just select the ones that look nice



Nala66

Apr 26, 2019 12:48pm | Post# 2913

1 Attachment(s)

In the case above it cannot be true because the yellow line I drew does not have a line of sight on the RSI.

Now if you look at my plotting on my 1 hour you see we have two signal (blue completed and yellow in progress)



Nala66

Apr 27, 2019 3:45am | Post# 2916

1 Attachment(s)

[Quoting priyank20](#)

Disliked

{ quote } I appreciate your patience,Alen. What is line of sight on RSI?

The line drawn must not cut through any point of the RSI it must have a clear run from point to point.

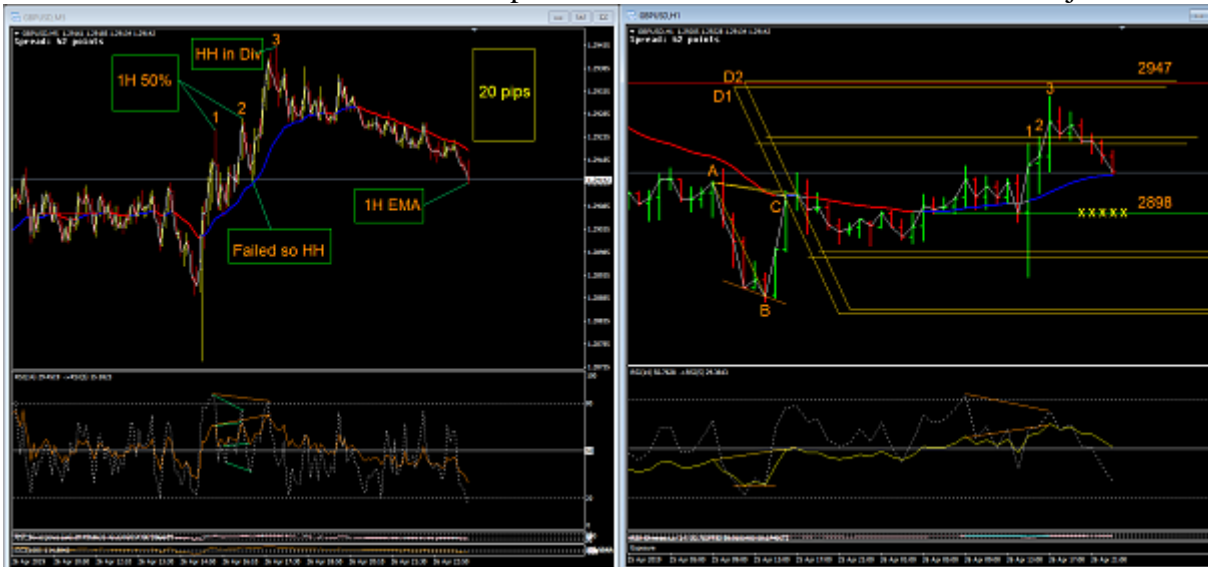
Line of sight simply means we cannot see round corners.

Now it is all very well creating these targets but it is very difficult to trade them because we just don't know which way it is going to hit them either above or below. So I just regard them as the ZOO points where I look to trade them back again.

Just as a swing high or low of the average is a ZOO point where price may falter and turn.

In other words we are looking for the failures at or close to the levels we have determined to be zones of opportunity (ZOO)

Here below we can see these zones in operation as we watch the 1H and 5M in conjunction.



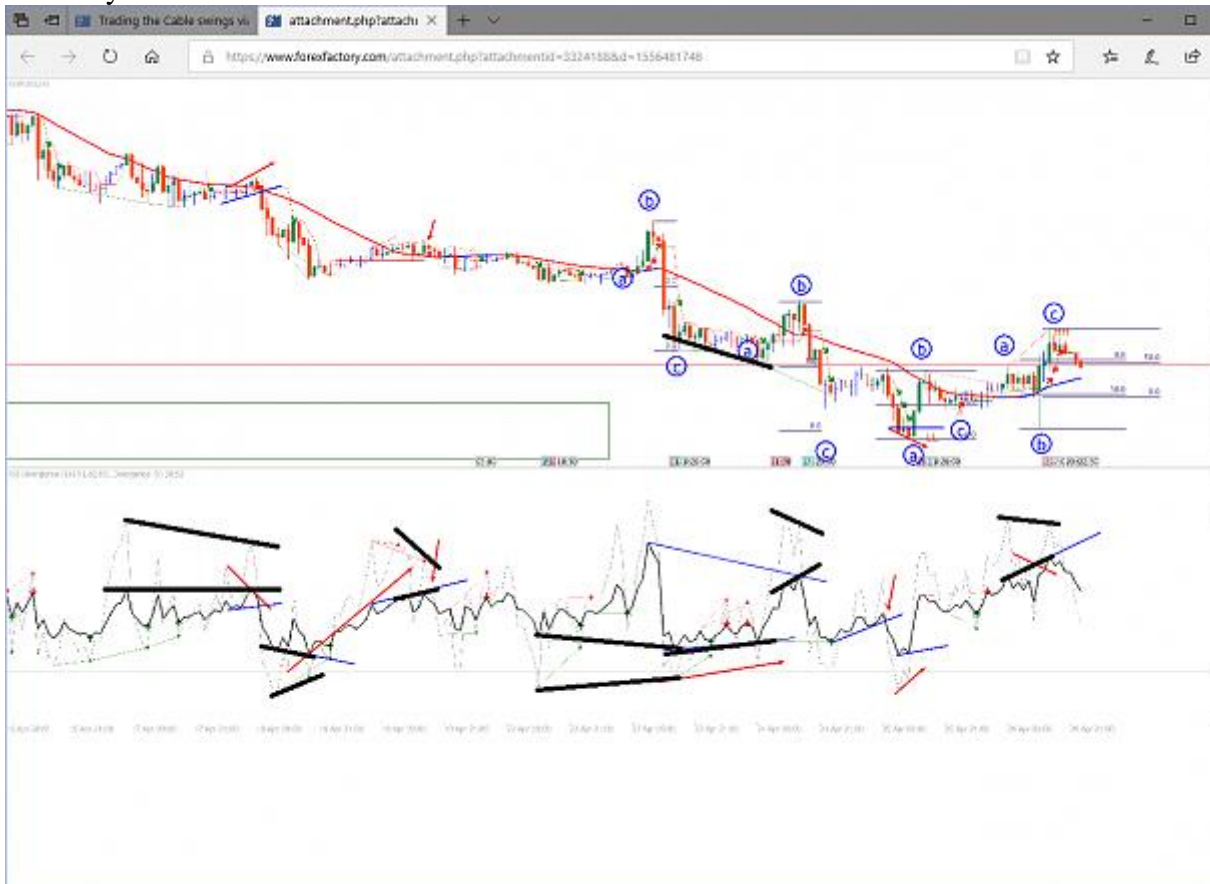
Nala66

Apr 29, 2019 4:22am | Post# 2923

1 Attachment(s)

I think you are seeing things correctly.

Here is your chart with a few additions.



Nala66

Apr 29, 2019 5:23am | Post# 2925

1 Attachment(s)

Banging its head on the 2847 swing average



Nala66

Apr 29, 2019 7:00am | Post# 2927

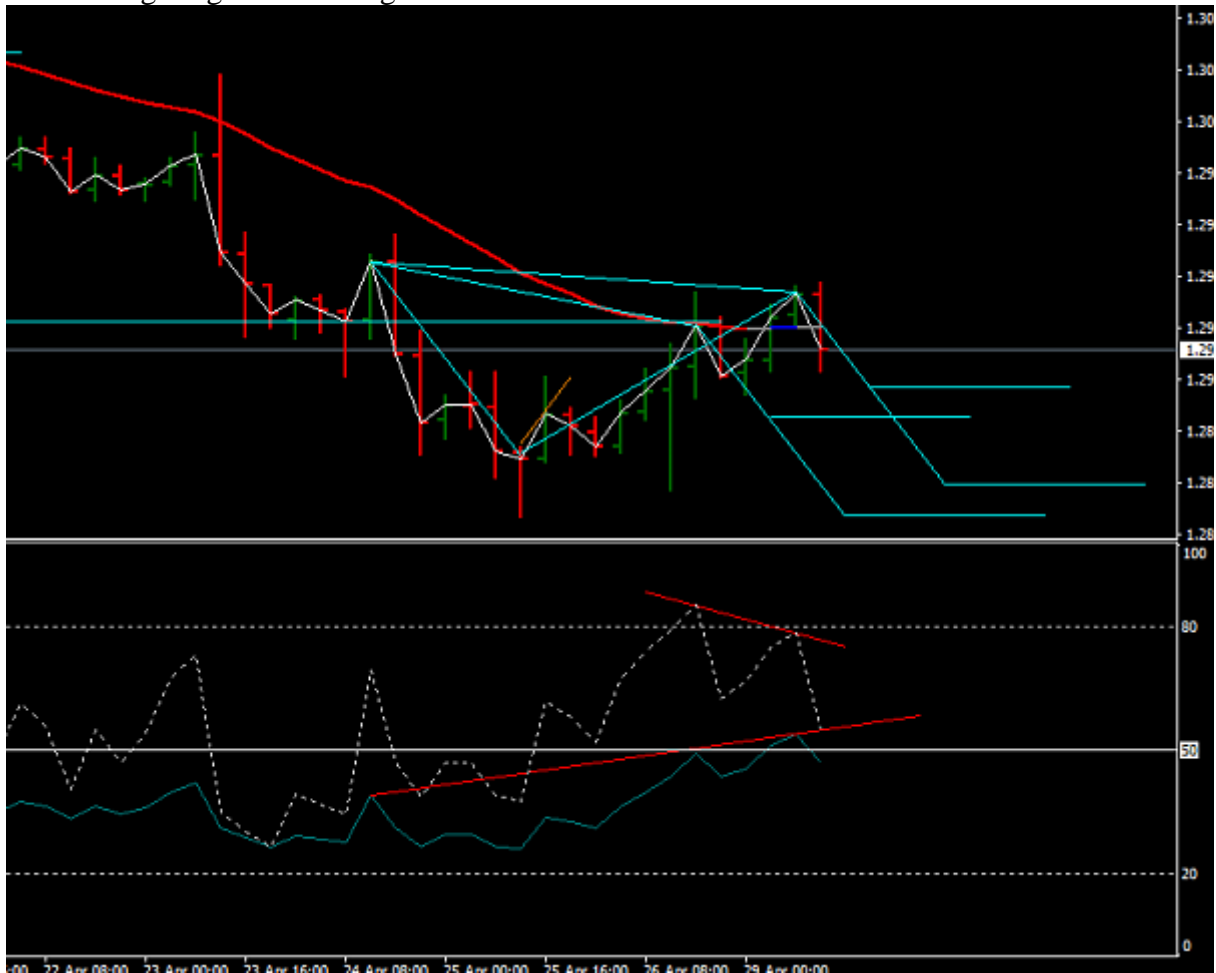
1 Attachment(s)

[Quoting quangvision](#)

Disliked

H4 as well with bearish RSI div and now hit MA. {image}

The 4H is giving a con-div signal to 2876/



Nala66

Apr 29, 2019 11:14am | Post# 2930

1 Attachment(s)

[Quoting topor12](#)

Disliked

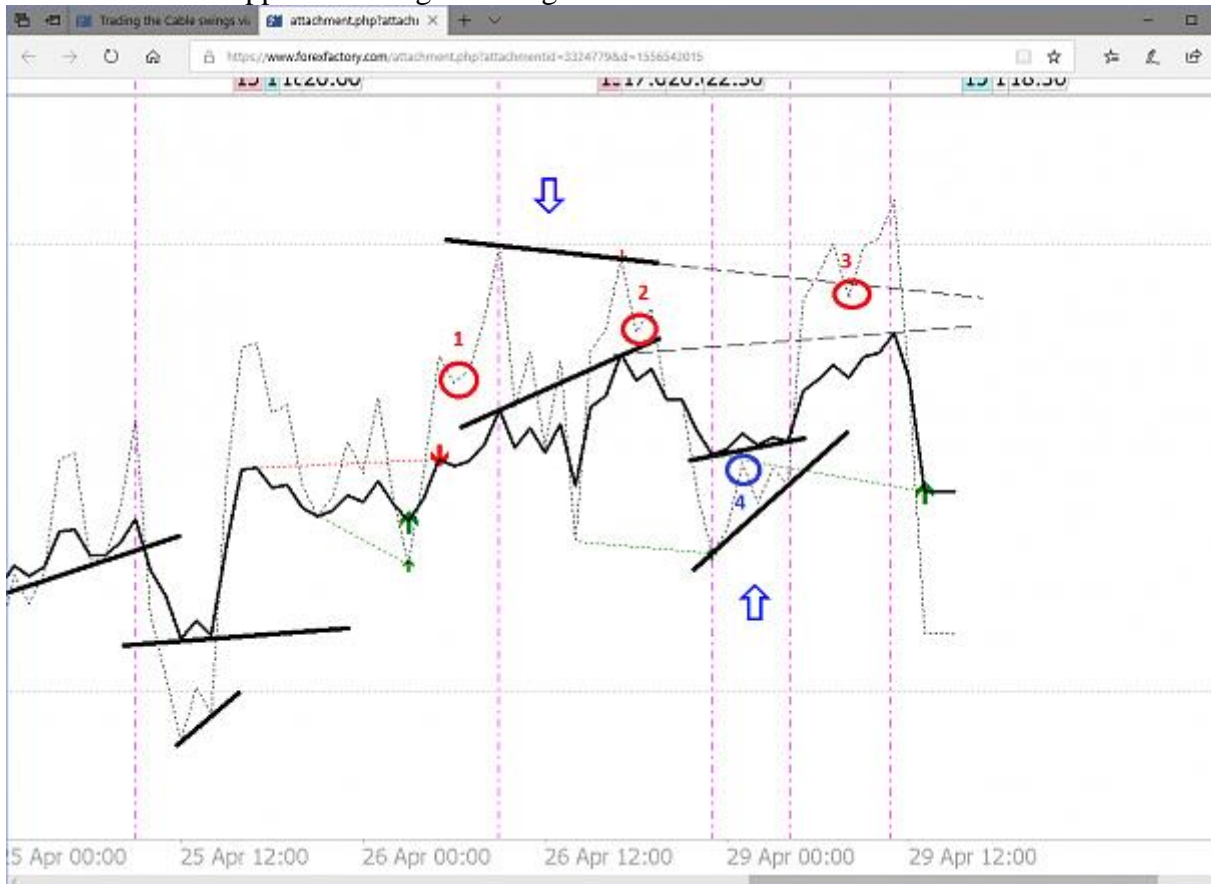
{image}{image}

I have added 4 points of support, 3 bullish and 1 bearish.

Number 2 bearish failed to hold.

Number 4 bullish failed to hold.

Watch for these supports holding or failing.



Jazz1964

Apr 30, 2019 5:01am | Post# 2938

1 Attachment(s)

[Quoting HoangPhuong](#)

Disliked

{quote} Post your chart pls I want learn all in group.tks

Disclaimer: I don't think I am the guru here at all 😊

I didn't take those 2nd and 3rd trades.



Nala66

Apr 30, 2019 5:38am | Post# 2939

[Quoting topor12](#)

Disliked

{image} funny ,the truth of this trading system is indeed in Alan's explanations in the forum written,I copied it yesterday ,ha ha ,Alan I set up a chart as you write ,RSI 14 (20 80) 5 (50) and sma 26)))) two lines and a yellow triangle)))) nothing more ... there is no money in my pocket but they will now hopefully haha . I sat for 24 hours to remember Alan's explanation and also turn on the light bulb in my head though in his old age)))) I post my drawings and started to blush as you scolded me)))) everything will be right)))) Alan ,in...

I must apologise if it sounds like a scolding, believe me it was not intended. I tend to be brief and to the point, If you want more waffle just ask.

Nala66

Apr 30, 2019 6:01am | Post# 2940

1 Attachment(s)

[Quoting davidmaree](#)

Disliked

{ quote } Well done Jazz. Nice to make pips on a slow day 😊. Don't forget that, if you have the margin, adding to trades is powerful. When London starts with a wimper the likelihood is a difficult session. Look back on your previous trades or even further back on the charts for situations where you could've added to trades and work these into your trading plan. Yesterday, the consolidation toward the EMA with bearish RSI divergence just below the EMA gave a good location for adding to your trade. This reduced the required take from the original...

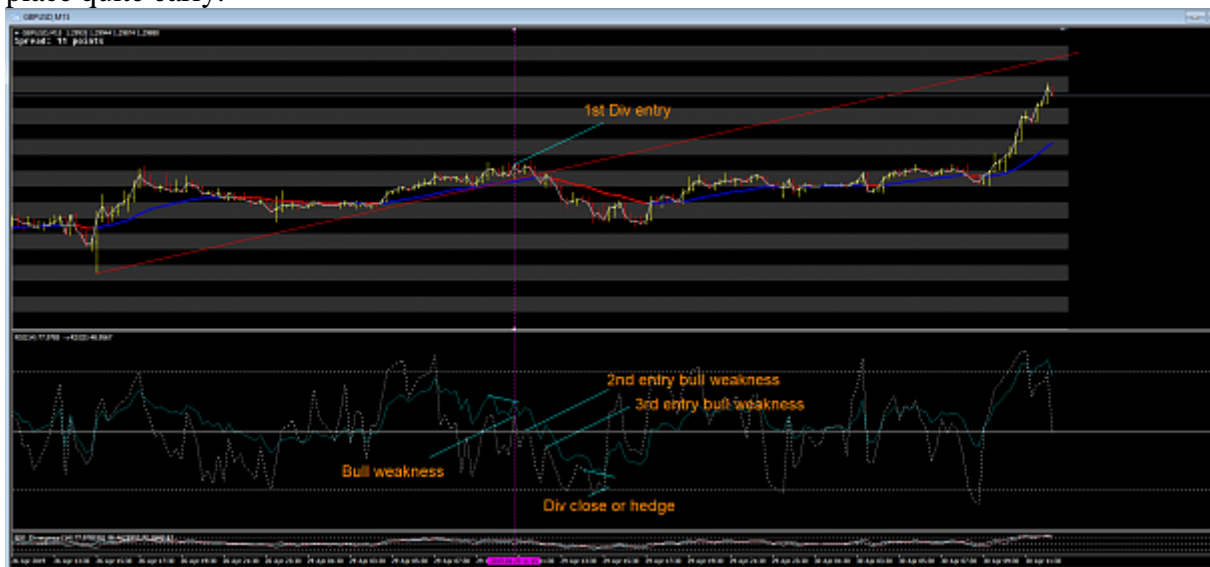
I would like to add a little to this post.

Adding additional trades to a winning situation makes a massive difference to your account rather than doing the % risk method.

So many people make the mistake of adding to losing trades in an attempt to average down the losing pips.

The fast RSI is a good indicator to take those additional trades, it shows where the weaknesses are.

Take a look at this 15 min chart from yesterday and see where those additional trades can be place quite early.



Nala66

Apr 30, 2019 6:11am | Post# 2942

1 Attachment(s)

[Quoting Jazz1964](#)

Disliked

I am unsure of what to look for today. H4: we are above EMA but I won't call bull support yet. H1: Trading above EMA with Bull support. Fast RSI bear divergences with slow RSI. And Hidden divergence White charts showing H1 making HH and HL and H4 flat at the bottom. ZOO = 1.2948 again for a short. I entered on the M5 HD just before 108bar and closed it because M5 both RSI's diverged. EDIT (2 hours after 108 bar): I was wrong. H1 EMA made its first HL and HH... and there is bull support....trend is up. whatever I saw in bear div there, it brought...

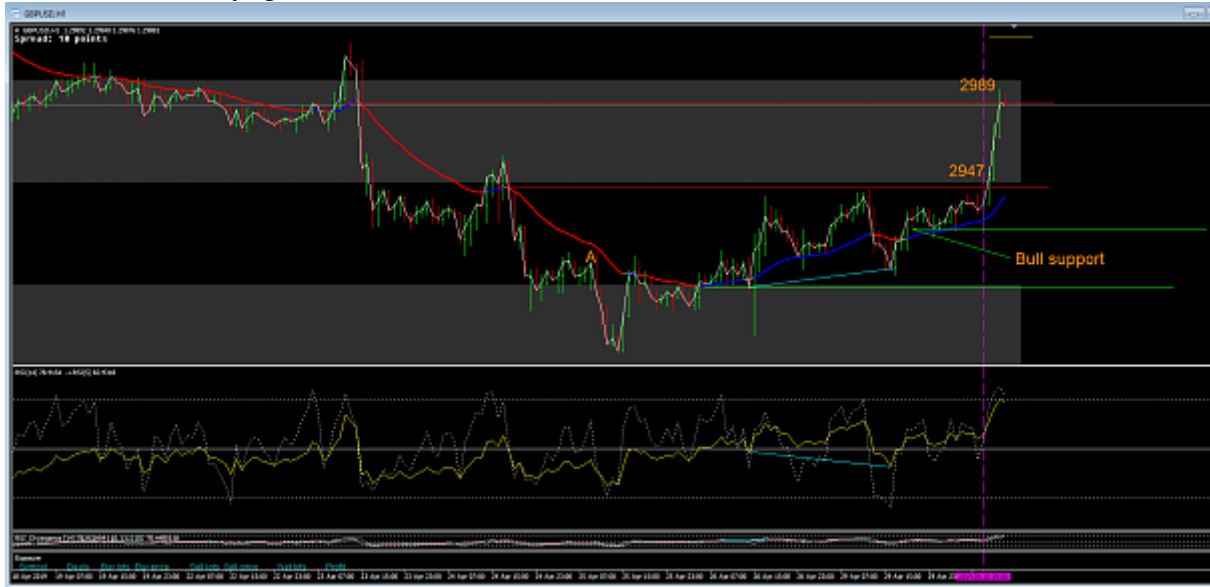
That is all clear Jazz but I have to wonder why you use the 4 hour chart it can easily send you in the wrong direction. I would only ever use the 4H if I cannot spot a trade on the lower time

frame of 1H max.

Today's 1h hour showed us a continuation div, then the 1H found support and when we come to the table at the 108 we see bullish div on the 5M for a long entry

Look at the 1H chart for accuracy of target hitting.

I didn't trade today, got home too late.



Nala66

Apr 30, 2019 10:59am | Post# 2949

1 Attachment(s)

[Quoting HoangPhuong](#)

Disliked

{quote} Hi MR Lana I bought line yellow because i have to see div RSI 5M. I sold line green because touch 80 RSI. I dont known it right or wrong. Have you teach for me? Thanks Mr Lana. {image}

Here you go, this is your chart



Jazz1964

May 1, 2019 4:59am | Post# 2954

1 Attachment(s)

This is what I did today



Jazz1964

May 1, 2019 7:29am | Post# 2959

1 Attachment(s)

[Quoting mikeeating](#)

Disliked

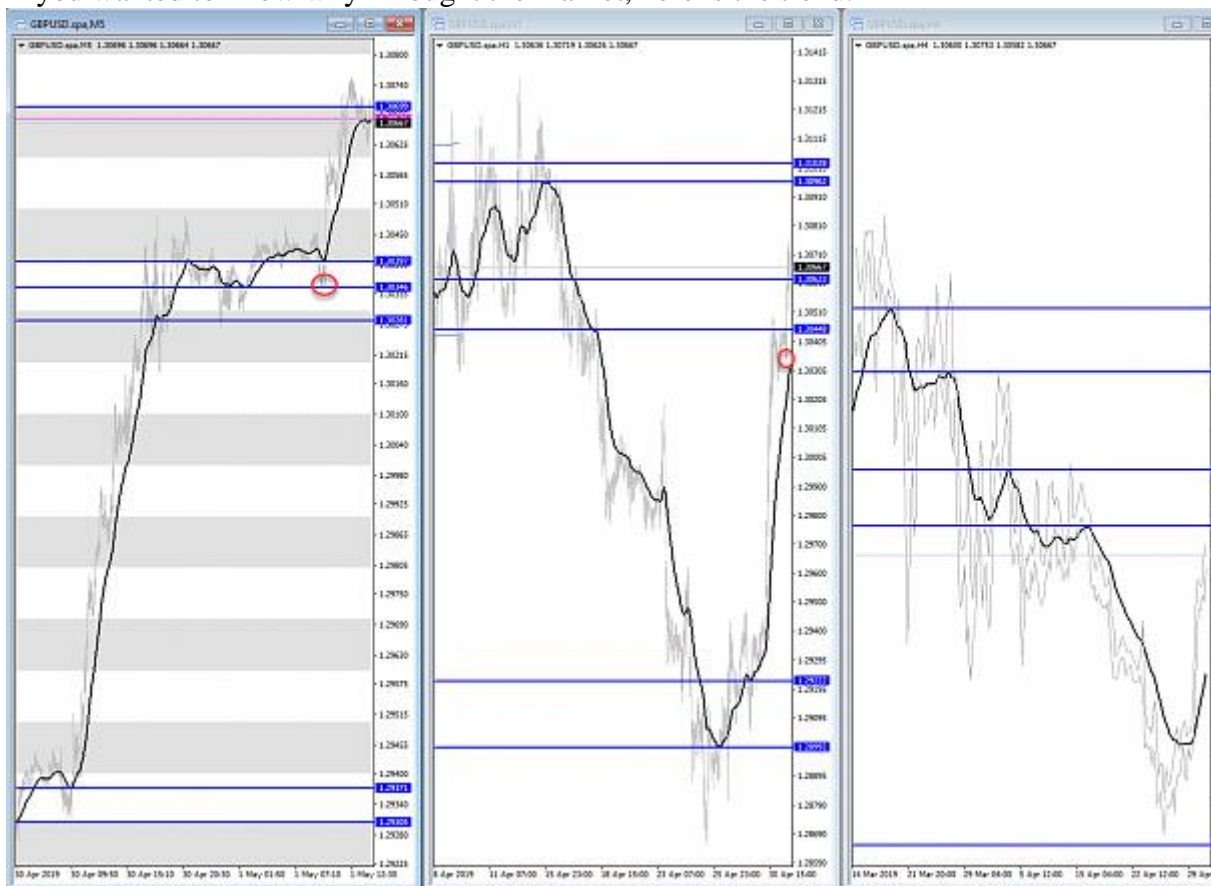
{quote} Hey Jazz did you stay long because the RSi dIv indicator stayed above support there?, not sure if thats why you circled

Not sure if I understand your question Mike.

The circle in the Hidden Divergence indicator window shows why I took that exit.

If you wanted to know why I closed the sell from the hedge, my answer is possibly not too clear on that. I spotted RSI weakening quicker than price, that looked a bit like a continuation div. Plus, price stayed well above the MA for a while, I went for an AB=CD idea (which now points to 3099).

If you wanted to know why I Bought the market, here is the trend:



Nala66

May 1, 2019 10:32am | Post# 2962

1 Attachment(s)

[Quoting HoangPhuong](#)

Disliked

{quote} Thanks Mr Nala I have question for Mr Nala. What is HD point? Are we compare RSI slow with line price or SMA?wright or wrong? Have we input entry 1:0.3lot input entry 2:0.6 entry3: 0.9 and wating..end 400 point(40 pip)?if we see div 5M time? So sorry because i dont understand all knowleg you teach in forum. I learn 1M to you. 😊 I hope you can teach for me Thanks sir!

HD is hidden divergence.

No the slow RSI compares to the fast RSI. It can signal divergence between the two or additional entries or possible exhaustion.

Yes these entries are correct for my particular situation and the 40 pip target begins once the third entry is made.

Entries begin at the approximate time of the 108 5m bar. Depending on the signals we see at

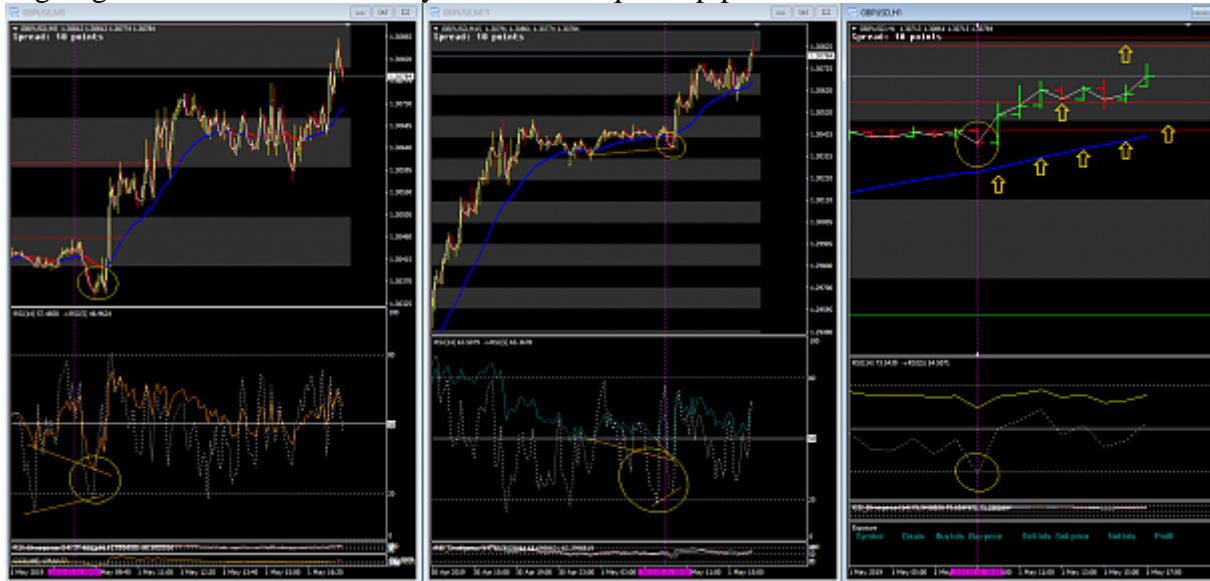
about this time. For example look at today's 9am 1 hour bar the fast RSI is signalling possible exhaustion, then drop to the 5m to look for the long entries.

Ask are we trading above or below the average (above)

If above then have the bulls found support (Yes)

If yes then what is the likely price target. Bearing in mind price at this time makes a nice run most of the time.

Look at the charts below, where I have circled is the same time on each chart. Just look what is going on here and how it easily makes the required pips.



Nala66

May 1, 2019 11:01am | Post# 2963

1 Attachment(s)

[Quoting Rodin](#)

Disliked

{quote} Hello Alan, I have a couple of questions regarding the bull/bear support. - In the quoted picture, bull support isn't appearing earlier ? 5 bars before you state "div 1st entry". In other words after crossing MA and founding support ? - When price creates support, let's say bull support in this example, when do you invalidate the support ? when price CLOSE below LOW of support ? I like your system a lot and it fits my personality as well, so thank you in advance to clear this little confusion and also to share your thoughts and methodology...

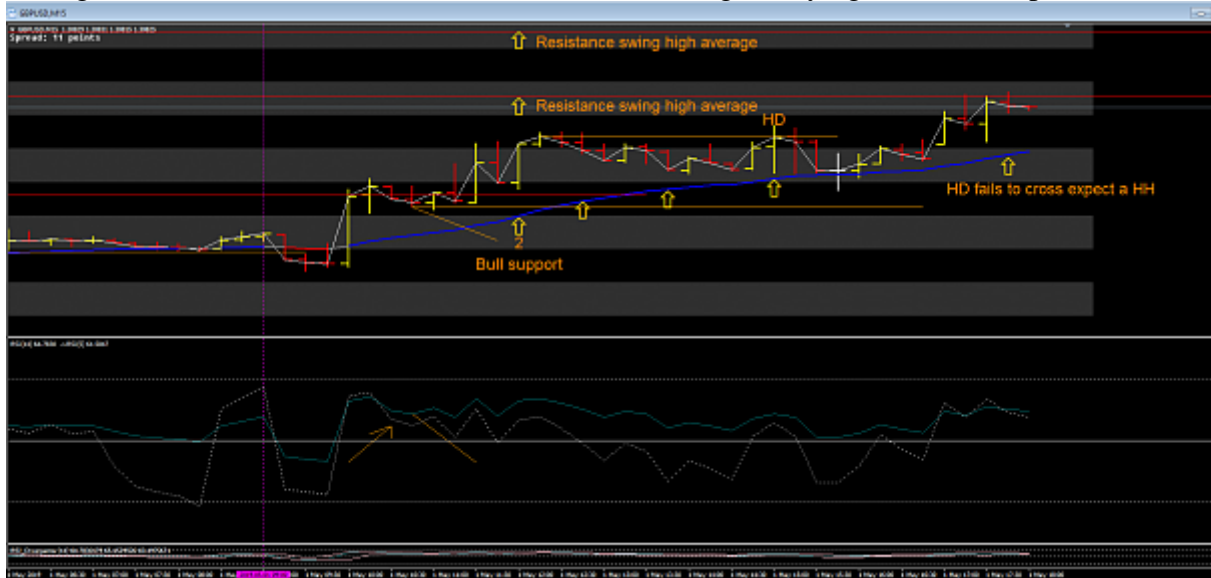
Well Rodin the 1st entry was the div and from then on each trade is different depending on the situation. That is why I have broken down all the situations into their respective components to explain them. The market is always going to mix or shuffle these situations to make it as confusing as possible.

Now a support bullish or bearish is when price crosses the 26EMA (which is the same as the RSI 50% level) and fails to recross before a V is formed. So obviously a support is invalidated when price closes below it or price may turn and close back below the EMA.

On the 15 min chart below I have drawn in the two bullish supports (There are no bear supports on this shot at all)

Look at (1) price has crossed from below makes the pull back and finds support. As you can see this was later taken out but the bears could not find support.

Now look at (2) it made a two bar pull back to find bullish support and so far this has been retested by the bears but still holds good. Currently price is bouncing off the swing high average which acts as resistance. All this time the average is trying to reach the price.



Nala66

May 1, 2019 11:20am | Post# 2964

[Quoting Rodin](#)

Disliked

{quote} Another question 😊 On your M15 chart why did you say bull weakness here ? No divergence. Because of fast RSI below RSI ? I suppose you declare weakness when price closes in a red candle or do you anticipate it through M5/M1 bearish signals like divergence on ZOO and so on ? Thanks !

This is a little more complicated to explain than it actually is. It depends whether we are looking for weakness or exhaustion they are different things.

Examples.

Weakness. We have a bear div in play and see the fast RSI make a peak below the slow RSI. In other words we are seeing the last 5 count of the RSI was weaker than the last 14 count.

Exhaustion. Is when we see the fast RSI bolt away from the slow to form a valley. In other words the last 5 count of the RSI raced away from the last 14 count and runs out of puff.

We have to be careful in determining what we are looking for because these are opposites i.e. peaks and valleys.. I would suggest you look back over the charts and look how each plays out in relation to the price action.

Nala66

May 1, 2019 11:24am | Post# 2965

[Quoting Jazz1964](#)

Disliked

This is what I did today {image}

Great stuff Jazz

Nala66

May 1, 2019 11:27am | Post# 2966

[Quoting Jazz1964](#)

Disliked

{quote} Not sure if I understand your question Mike. The circle in the Hidden Divergence indicator window shows why I took that exit. If you wanted to know why I closed the sell from the hedge, my answer is possibly not too clear on that. I spotted RSI weakening quicker than price, that looked a bit like a continuation div. Plus, price stayed well above the MA for a while, I went for an AB=CD idea (which now points to 3099). If you wanted to know why I Bought the market, here is the trend: {image}

Everyone should take note of these charts see how much Jazz can see here. So much useful information on these simple charts.

This is what this thread is all about, trading the averages and the signals that take us from A to z.

Jazz1964

May 2, 2019 4:26am | Post# 2970

1 Attachment(s)

Although I didn't trade it due to having a visitor overhere, I was curious how yesterday would evolve into FOMC.

Beautiful how the measured move target on the M5 chart was reached and how that target was the exact H1 EMA swing high.

That, with bearish H1 divergence and H1 HD.

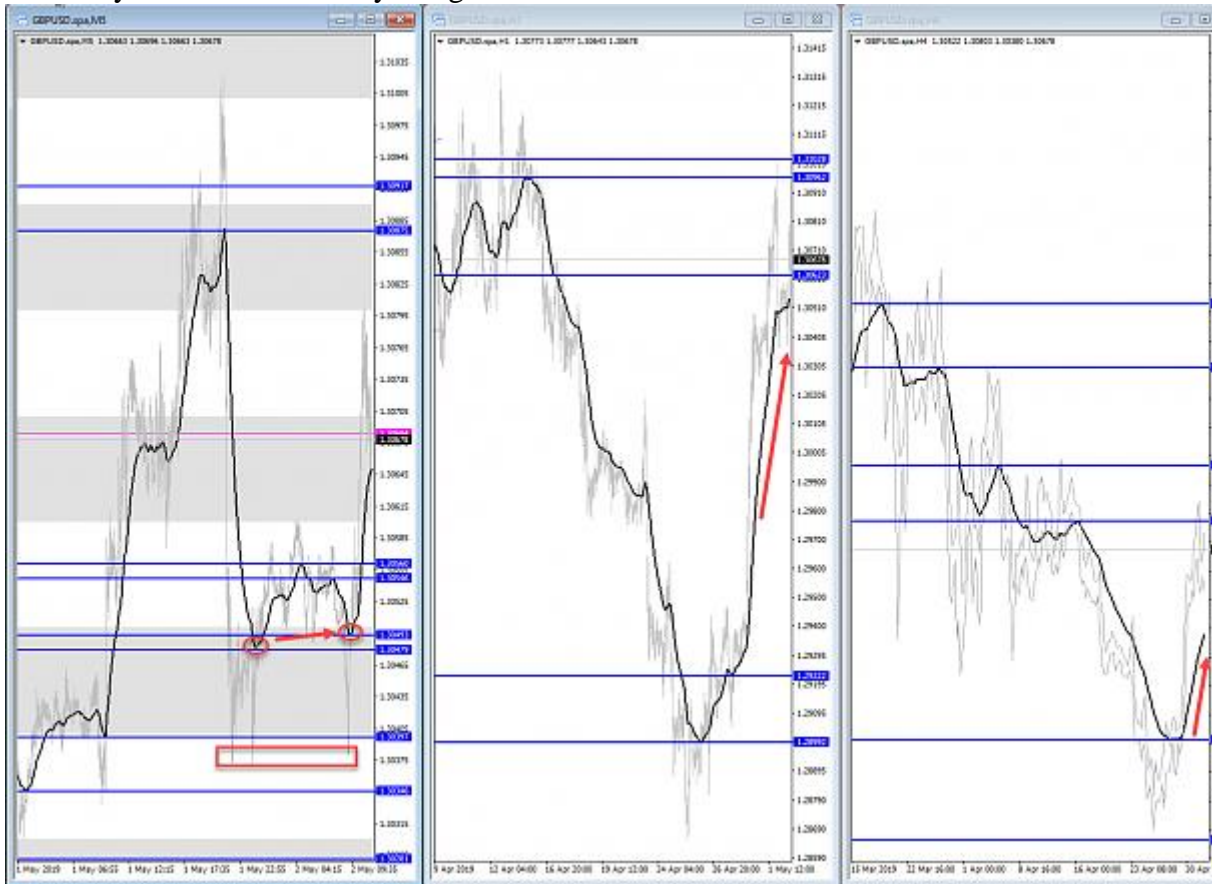
And M5 bear div and M5 HD.

That gave an easy 55 pips downward move



2 Attachment(s)

For today's start it was clearly Long business to look for



Supported by H1 bullish continuation div

On M5 I couldn't find divergence but it is clearly RSI oversold in the ZOO area.

Long positions could be hedged or closed at the M5 HD

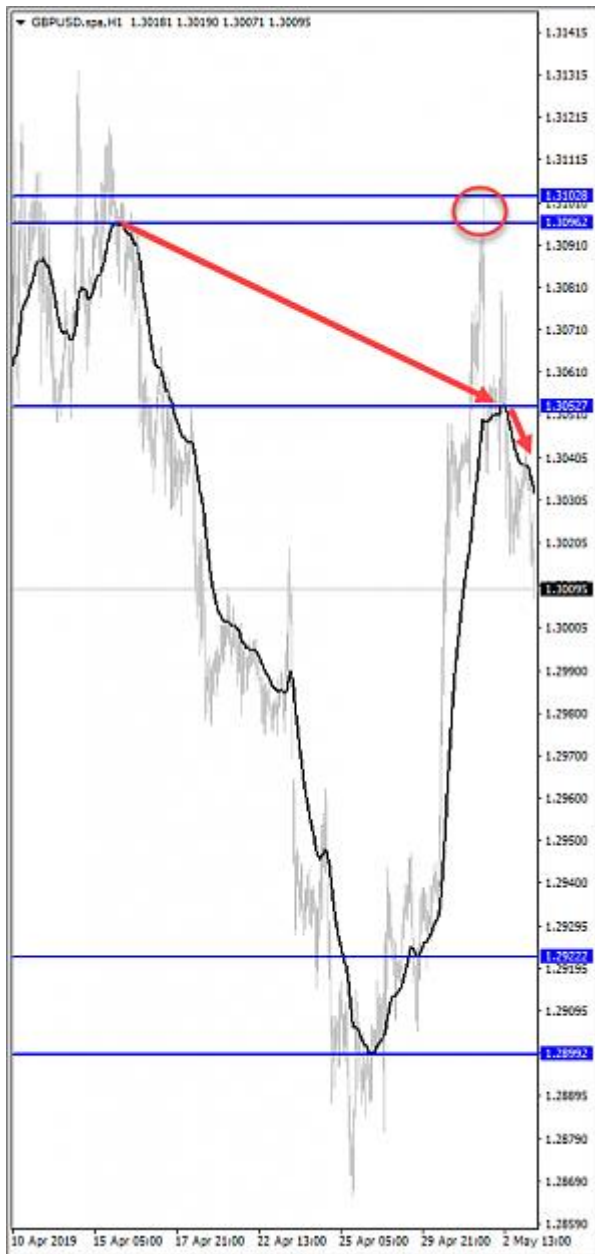


2 Attachment(s)

So, yesterday H1 EMA couldn't make a new HH.

So now it's gonna test the other side with more than enough room for our daily profit.

The divergences on this chart were good to get involved in a short setup.





Jazz1964

May 3, 2019 5:59am | Post# 2977

1 Attachment(s)

I like 🎯



Have a good weekend all and once again, thank you, Alan, for sharing and clear education on your system!

Nala66

May 3, 2019 7:28am | Post# 2978

[Quoting Jazz1964](#)

Disliked

I like 🎯 {image} Have a good weekend all and once again, thank you, Alan, for sharing and clear education on your system!

Perfect 🎓🎓🎓🎓🎓 master class stuff.

davidmaree

May 3, 2019 7:44am | Post# 2979

[Quoting Jazz1964](#)

Disliked

I like 🎯 {image} Have a good weekend all and once again, thank you, Alan, for sharing and clear education on your system!

So happy to see your persistence paying off Jazz. Really well done.

Jazz1964

May 3, 2019 8:48am | Post# 2980

1 Attachment(s)

Just an observation on the NFP news:

Price pulled down and then went up on HD. Then paused or stopped (for now) at the H1 EMA.

That's a quick 30+ pip move.

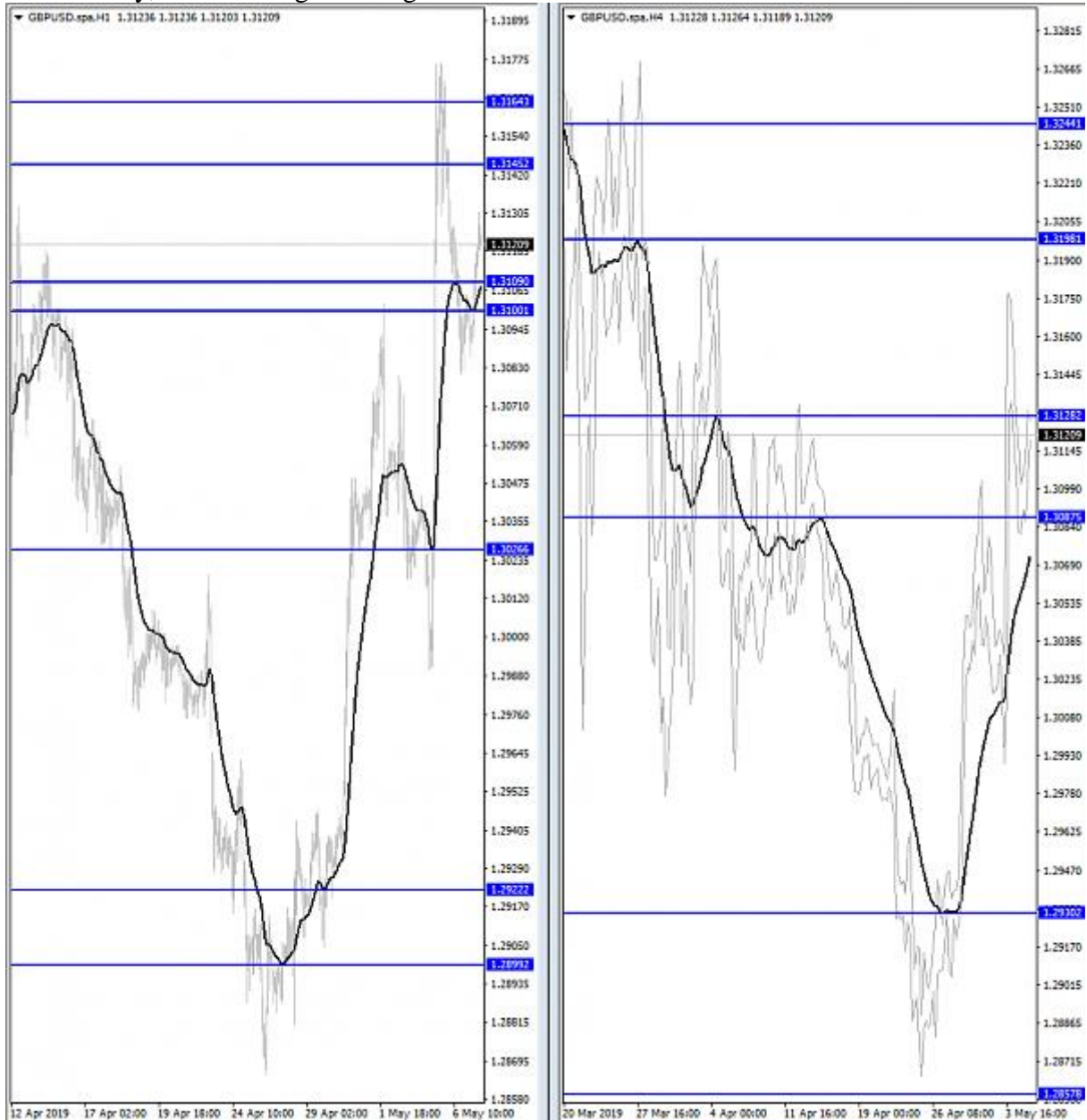


Jazz1964

May 7, 2019 1:52am | Post# 2992

1 Attachment(s)

As for today, I am looking for Long business:



I still have an H4 AB=CD and an ABCD target to reach:



I am cautious due to H1 neg. div building up:



At this very moment no interesting M5 entry to spot.

Jazz1964

May 7, 2019 2:59am | Post# 2994

1 Attachment(s)

Looks like I missed a nice M5 entry



Jazz1964

May 7, 2019 4:14am | Post# 2997

1 Attachment(s)

In hindsight, on M5 there was bearish HD around bar108, in line with what we saw developing on H1.



H1 didn't make the EMA HH and Bulls didn't find support.
Let's see if bears find support now.

Jazz1964

May 7, 2019 4:53am | Post# 2998

[Quoting quangvision](#)

Disliked

{quote} Price is approaching your ZOO. Plan still stands?

That ZOO was reached yesterday in my afternoon. It's not of value anymore.
I posted that pic to show market structure.

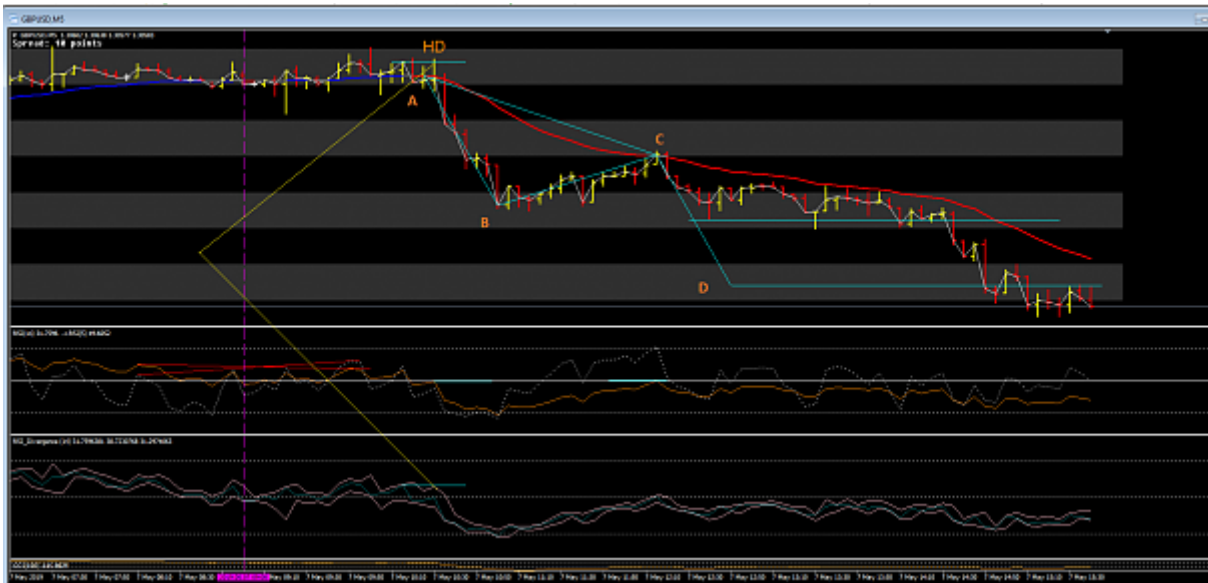
Nala66

May 7, 2019 8:50am | Post# 3002

1 Attachment(s)

Just popped in to see how you guys read the charts today.

Here was mine..



Nala66

May 7, 2019 9:08am | Post# 3006

1 Attachment(s)

At a guess where would you expect this 1H to be heading for.



Nala66

May 8, 2019 7:30am | Post# 3017

1 Attachment(s)

There are actually two AB = CD's on the 1 hour chart the first hitting its target yesterday and the second closing in on its target today.

When measuring these don't forget the + or - at the 50% retracement and attached this to the target area.



Nala66

May 8, 2019 8:08am | Post# 3018

1 Attachment(s)

Whoops I made a mistake drawing this second AB = CD.

The CD line should have started at the 50% level then the + or - to give us D.



Nala66

May 9, 2019 12:22am | Post# 3022

1 Attachment(s)

Today we can see that the 1H AB = CD target was hit and then price flattened out without attempting the 2921 average level. The average has made the LL as we would have expected from the failure at the top to make the HH.

To me we need to take care today price could go either way.



Jazz1964

May 9, 2019 4:36am | Post# 3027

1 Attachment(s)



I took a bit less than 40 pips below the 3rd entry

Jazz1964

May 10, 2019 5:52am | Post# 3038

1 Attachment(s)

I wasn't really at my screen, birthday stuff, so my BE exit was triggered.

Looking back to this session, it is remarkable how it still was possible to grab 40 pips.

Those divergences in all forms are powerful



Nala66

May 10, 2019 6:07am | Post# 3039

[Quoting Jazz1964](#)

Disliked

I wasn't really at my screen, birthday stuff, so my BE exit was triggered. Looking back to this session, it is remarkable how it still was possible to grab 40 pips. Those divergences in all forms are powerful {image}

I had to place three different trades to do it today.

Nala66

May 10, 2019 6:12am | Post# 3040

1 Attachment(s)

We are stuck in the middle of the two averages.



1 Attachment(s)

Well would you look at that. I had actually forgotten all about this 1 hour target.

Goes to show the market always remembers.



1 Attachment(s)

There is another old H1 target



[Quoting Jazz1964](#)

Disliked

There is another old H1 target {image}

G'Day Jazz, the thing with that one is that both pivots are on the same side of the EMA and I don't like those..

Still it may still go for that as the 4 hour is trying to break through a div at this time.

Nala66

May 14, 2019 4:52am | Post# 3064

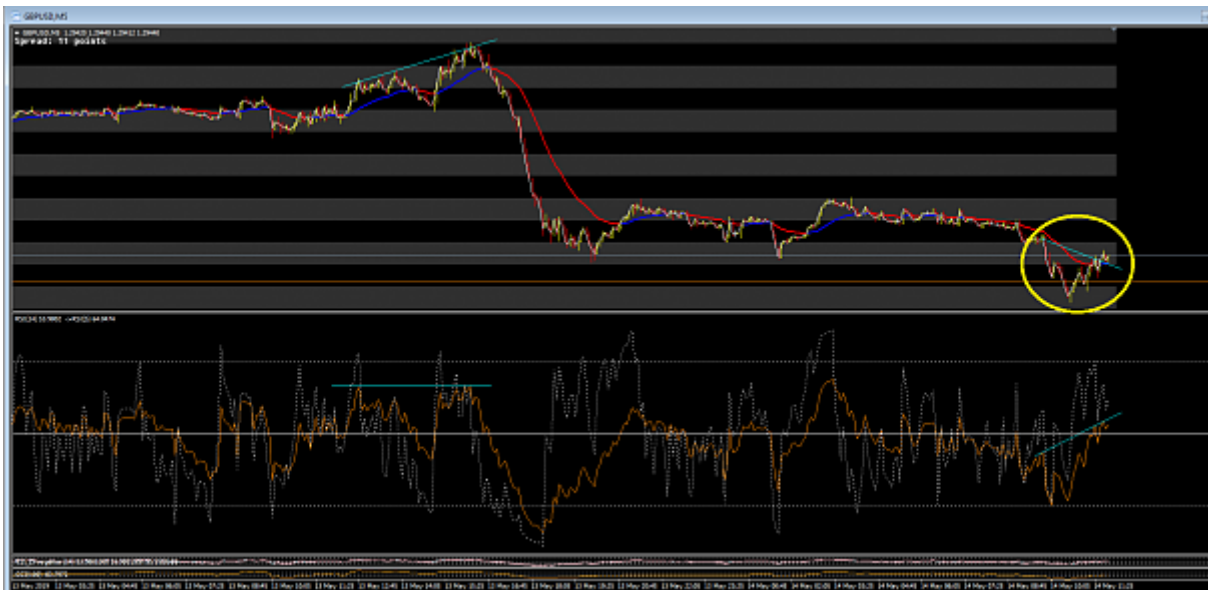
1 Attachment(s)

[Quoting quangvision](#)

Disliked

{quote} Nice, which exact point you got entered and what point you out for BE?

On the 5 min took the con div

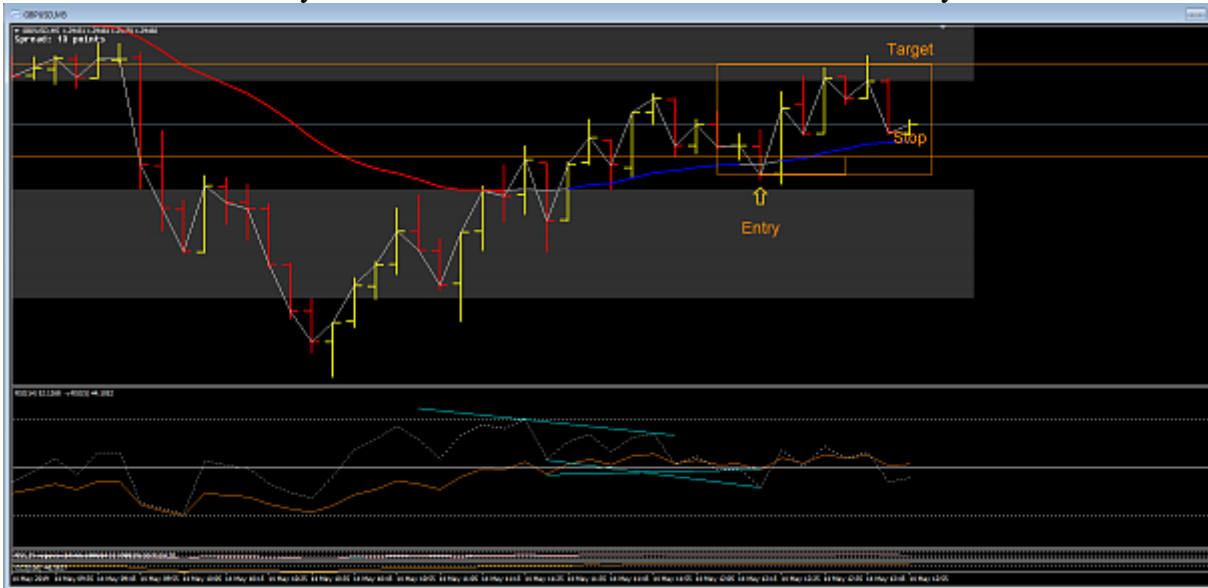


Nala66

May 14, 2019 5:55am | Post# 3074

1 Attachment(s)

And as I return from my coffee break I see I am done and dusted for today.



Nala66

May 14, 2019 6:00am | Post# 3075

Generally I only watch the trade until I get the stop to BE from then on it either makes what I want or it doesn't.

Of course when wanting the bigger pips one has to keep an eye out for possible retraces.

Nala66

May 16, 2019 9:47pm | Post# 3084

[Quoting witowito](#)

Disliked

{quote} Okey i took couple of longs today wich fail. Probably cause i dont have the understanding yet of the way u read price and indicators at EMA... I still reading the whole thread looking to get a deep understanding of the knowledge u are sharing. I have found at post 1360 one example wich could explain why my longs today wasnt valid... Correct me if im wrong please. This is today chart where u can see many divergeces in m5 when price was at h1 target EMA (red line){image} There was also h1 divergences at that point so i was expecting price...

Yes I understand your question.

With a divergence we expect a return to the EMA and to even cross it and find support.

In this case you are looking at bullish divergences going against the trend so in effect these are either scalps (which can turn into trades) or hedges to protect the short entries..

When the divergence fails to cross the EMA you should expect a lower low.

When the bulls fail to find support expect a lower low.

When the bulls cannot hold onto the support expect a lower low.

Your assumptions were correct to go long but this is risky because it is against the trend so at best it is a scalp or a hedge.

You will be far better off not trying to fight the market and go with the signals that aim to continue the trending direction this is the most likely way to extract your profit and much more quickly if done at the right time (108).

Clearly you can see the 1 hour is trading below the average and on the 5 min chart there were many signals to take the shorts...not longs.

On the 5 min chart you posted with a green box on the RSI. The contents of this box were all shorts so I am at a loss to understand why you were long.

It is a common mistake to take a divergence and expect a good result when only 1 or 2 pips are there to be taken. This is why we have a three stage entry so we risk little. When trading below to EMA on the 1H look for the short entries on the 5 min it is the safer option.

Nala66

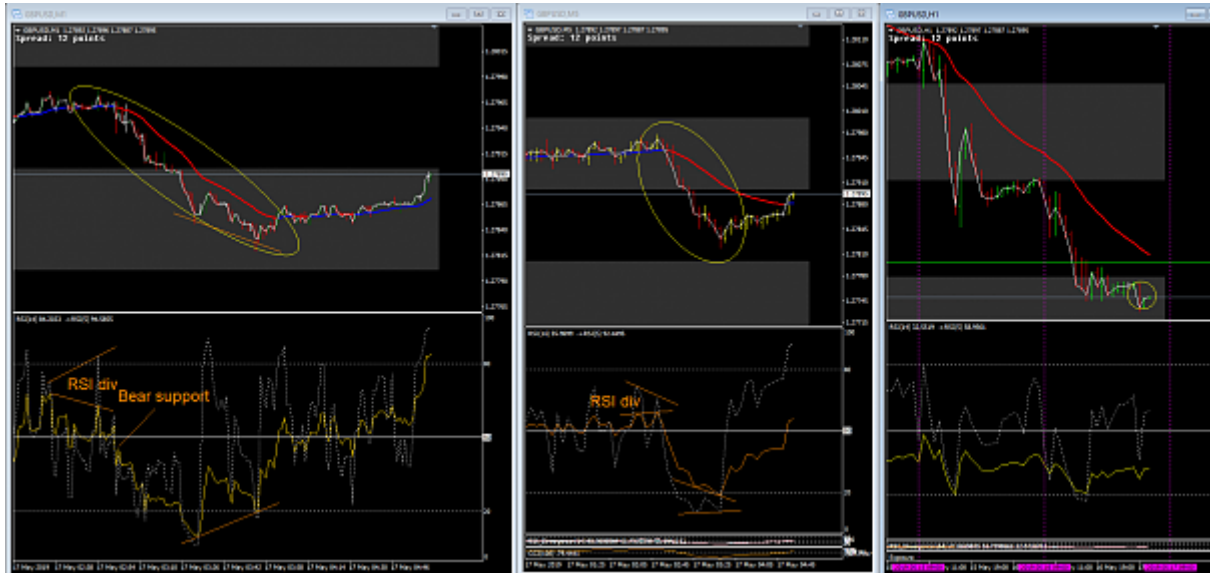
May 16, 2019 10:02pm | Post# 3085

1 Attachment(s)

It is a simple process.

Look below the 1 hour price is below the EMA dragging the EMA towards a lower swing low.

We see a signal both on the 1 minute and the 5 minute charts to say go short. Both of these also gave the indication to close i.e. 1M was a regular bull div and the 5M was an RSI bull div.



Nala66

May 17, 2019 3:22am | Post# 3087

[Quoting witowito](#)

Disliked

{quote} Thanks for the answer. So the Idea is: Respect the main trend and better dont figh it maybe just hedge if I was already in a trade or look for quick scalp moving fast to BE. I take notes and continue studing. Cheers

Yep, all moves are preceded with some form of signal. we have to determine whether it is worth our trading it or not.

Nala66

May 17, 2019 3:24am | Post# 3088

1 Attachment(s)

The 4 hour looks like it is attempting a lower average low



Nala66

May 17, 2019 5:01am | Post# 3090

1 Attachment(s)

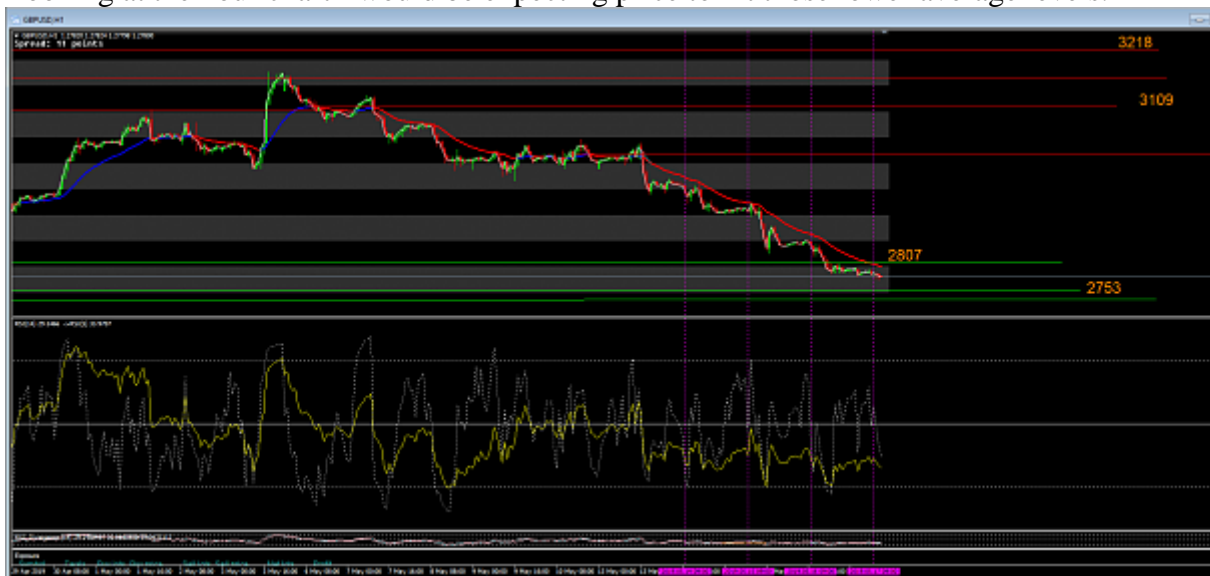
[Quoting mikeeating](#)

Disliked

Hey Alan are you working tonight? do you have a target ?

Just observing tonight. I don't see much happening at all.

Looking at the hour chart I would be expecting price to hit those lower average levels.



Nala66

May 17, 2019 5:14am | Post# 3092

1 Attachment(s)

Yes but I am very tired because of it...I need a break.

This 1 hour has probably got better numbers than my drawing



Nala66

May 17, 2019 5:35am | Post# 3094

1 Attachment(s)

[Quoting mikeeating](#)

Disliked

{quote} I definitely need to buy a new set up so I get the screen size for the deeper levels. have good weekend, Maybe some fishing instead of trading next week 😊

I wish but her in doors insist I do some work around the house and garden and that is the only exercise I get.

The 4H is nearly there.



Nala66

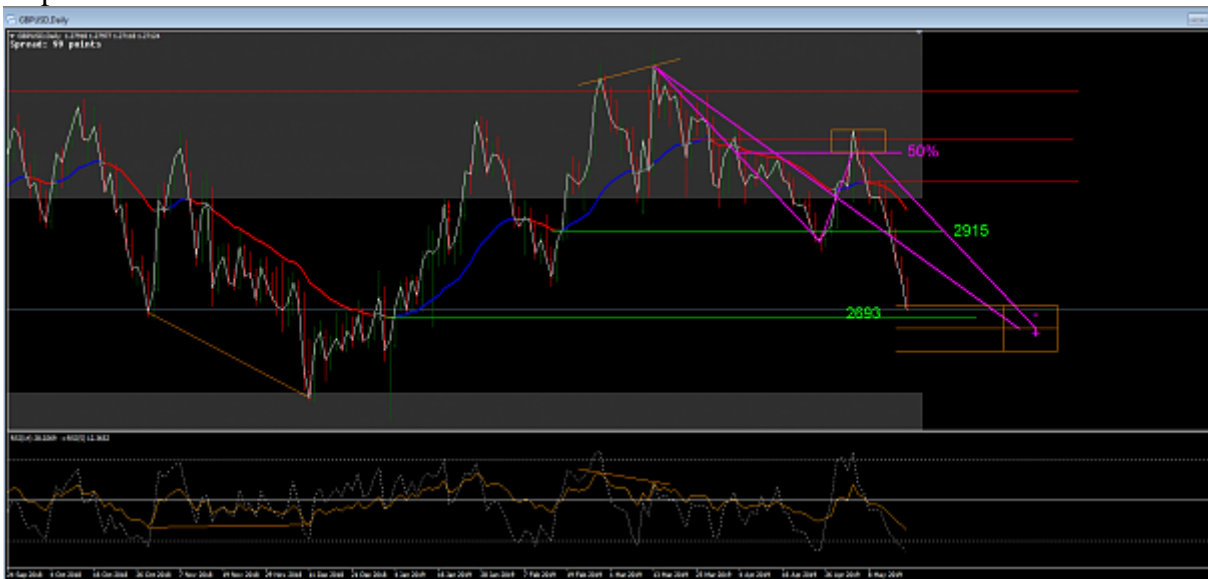
May 19, 2019 5:06am | Post# 3103

1 Attachment(s)

Well what is going to happen this week?

The dollar has been very strong of late and buyers seem to be demanding them wholesale but would we be too late to get in on the deals if we were to start now. I think so, we appear to coming to the end of the run and should begin our watch for a change in direction over the next 100 pips or so.

Looking at the daily chart we see that price has already made the minus box of an AB = CD and looks like challenging the 2693 swing average level as the average itself looks set to challenge the 2915 for a lower low. The trouble now is that price can just hover around for a while waiting for the EMA to catch up or we could see a serious challenge by the bulls to stop the EMA but I would like to see a div for it to do that.

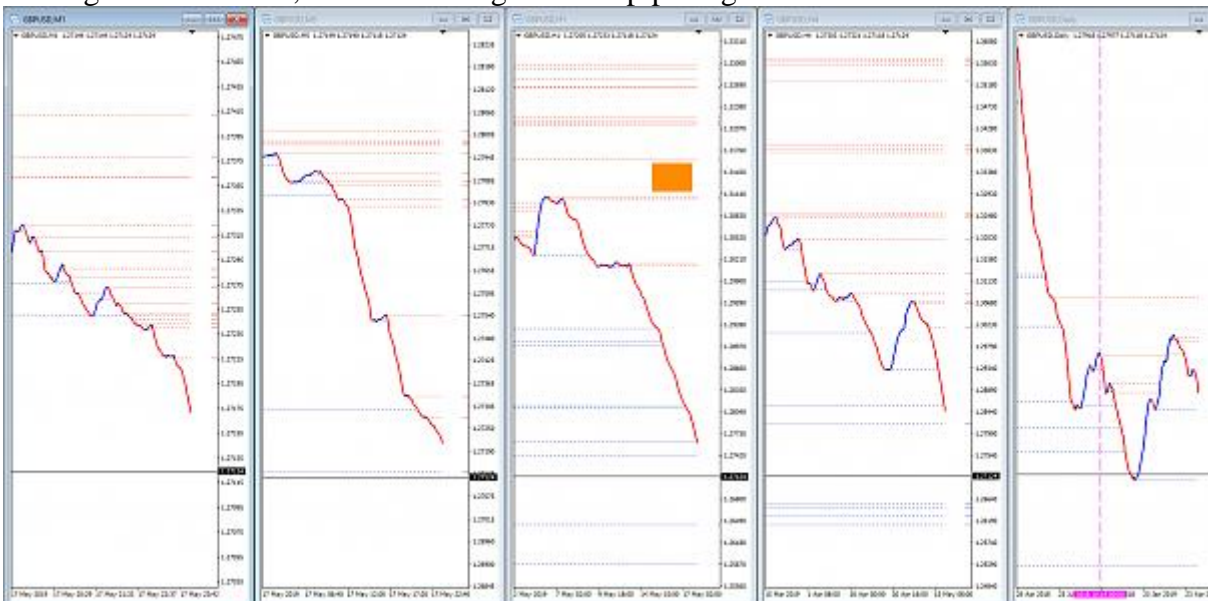


Nala66

May 19, 2019 5:13am | Post# 3104

1 Attachment(s)

When we look at our average charts we can clearly see that the interest is in this daily chart making that lower low, with something like 100 pips to go.



1 Attachment(s)

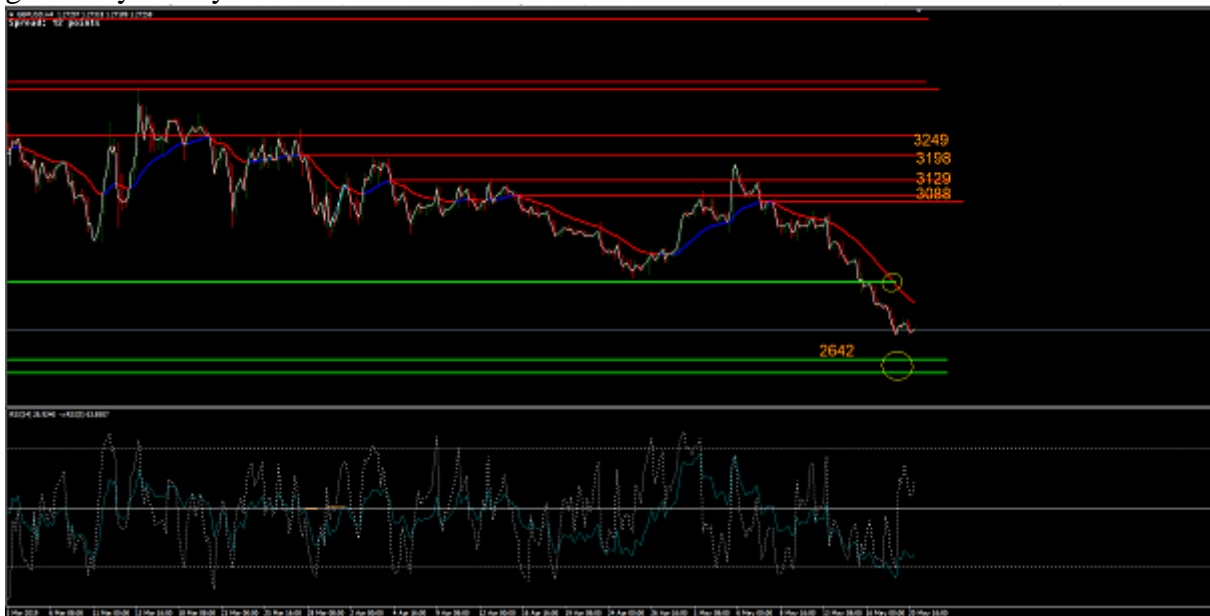
As expected we still see the bears holding as the average is approaching the 2915 level.

The market doesn't like to stay in these holding patterns for too long, people want to make money.

At the moment they are just putting it into the piggy bank and sitting on their hands. As we can clearly see the daily moves are no so great but they have been consistently short.

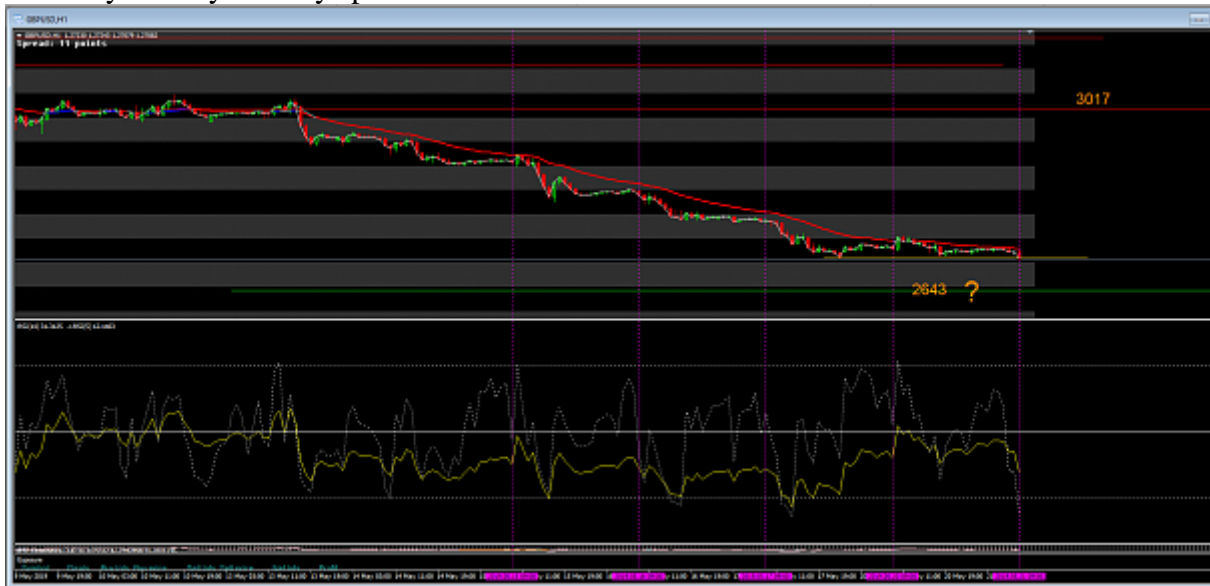
Obviously things will begin to happen firstly at the lower time frame levels and then domino up to the higher time frames. However I would advise not to try and catch the bus before it arrives, wait for the evidence no need to rush in blindly.

Even on this 4 hour chart there is nothing to indicate direction so keep things tight lest a trade gets away from you.



1 Attachment(s)

The next lower level on the Hour is 2643. We need to see a big push to make that level and seriously break yesterday's price low.



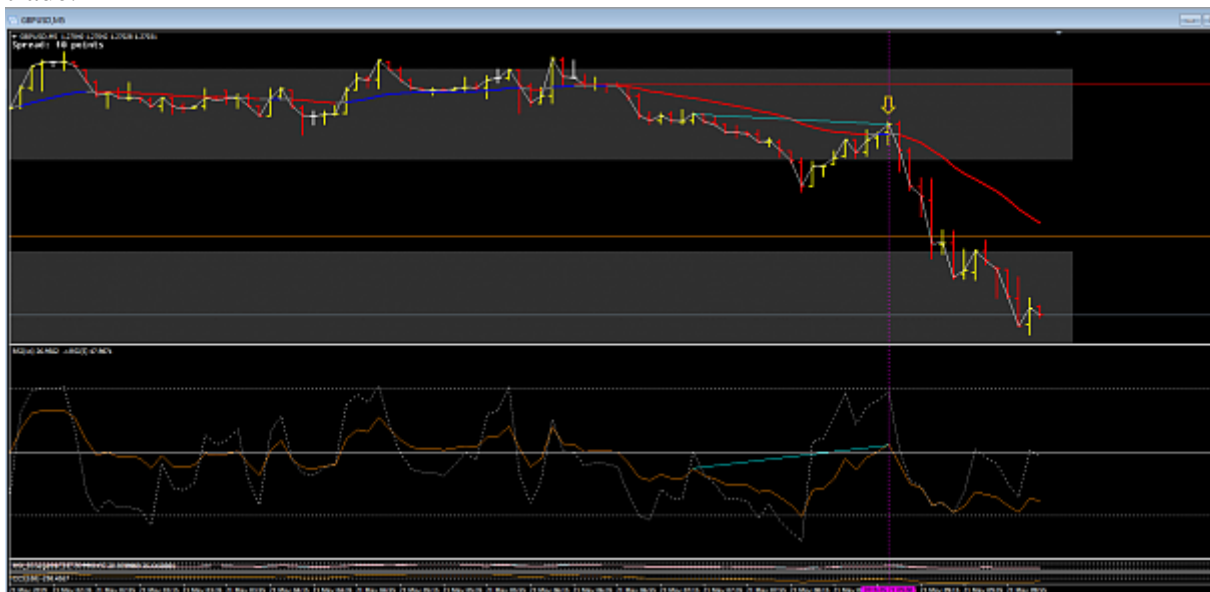
Nala66

May 21, 2019 3:08am | Post# 3119

1 Attachment(s)

I wouldn't worry too much looking for bull divs in a bear market.

Much better to look for the continuation signals unless you feel the need to hedge a short trade.



Nala66

May 21, 2019 5:20am | Post# 3121

1 Attachment(s)

Don't much care for news myself, I wouldn't be able to make sense of it anyway.

This is a very slow market probably due to the holding pattern.

Would have expected this 1H target to have been hit by now.



Nala66

May 22, 2019 3:21am | Post# 3124

1 Attachment(s)

Today we see the daily making the LL of the average, as predicted.

And price has just hit the $AB = CD$



Nala66

May 22, 2019 3:31am | Post# 3125

1 Attachment(s)

[Quoting Nala66](#)

Disliked

{quote} I think it hit the target yesterday because when I checked I found I had the drawing wrong.

Scratch this.. I am confusing myself now.

My 1H looks like this now.



Jazz1964

May 22, 2019 7:18am | Post# 3132

1 Attachment(s)
Got ya 40 pips



Nala66

May 22, 2019 7:58am | Post# 3134

1 Attachment(s)
[Quoting Jazz1964](#)

Disliked

Got ya 40 pips {image}

Not drawn correctly Jazz



Nala66

May 22, 2019 8:03am | Post# 3136

1 Attachment(s)

Keep an eye on those average targets



Nala66

May 22, 2019 8:11am | Post# 3139

1 Attachment(s)

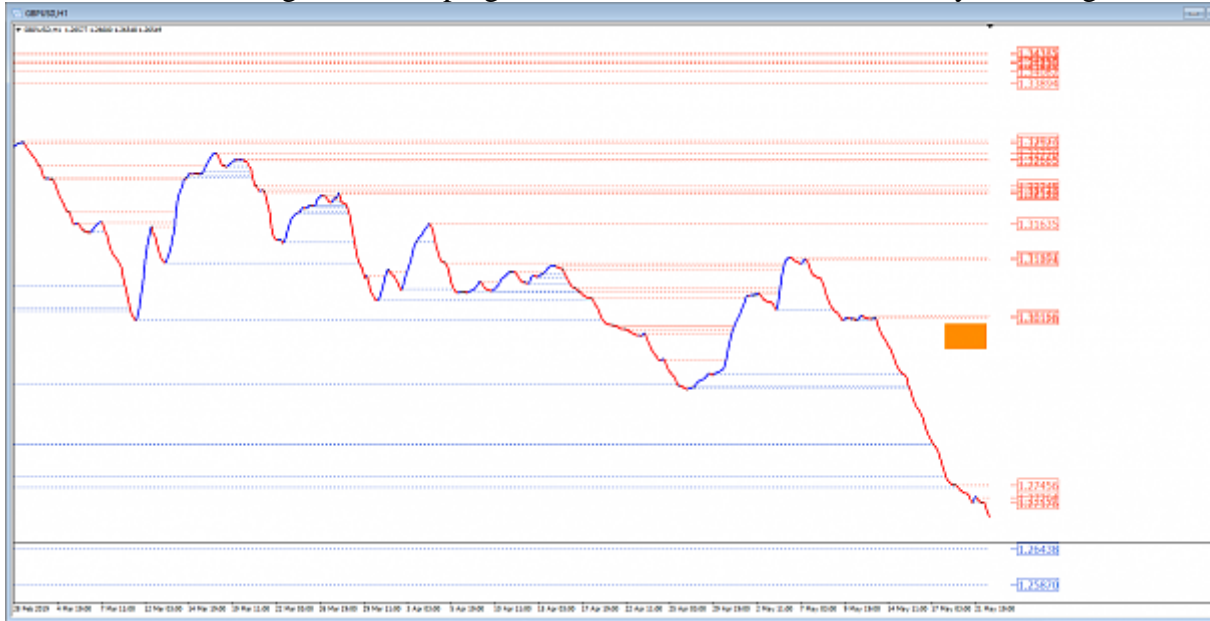
[Quoting Jazz1964](#)

Disliked

2643 was an H4 isn't it. I don't have it on H1

Nor do I jazz so I simply copied it from the 1 hour white chart.

I find the white chart great for keeping these historical records... Good on ya Mr Magnet.



5 min is looking for bull support



Jazz1964

May 23, 2019 2:46am | Post# 3147

1 Attachment(s)

Crap



Nala66

May 23, 2019 4:23am | Post# 3154

1 Attachment(s)

This is ridiculous you have to see it...

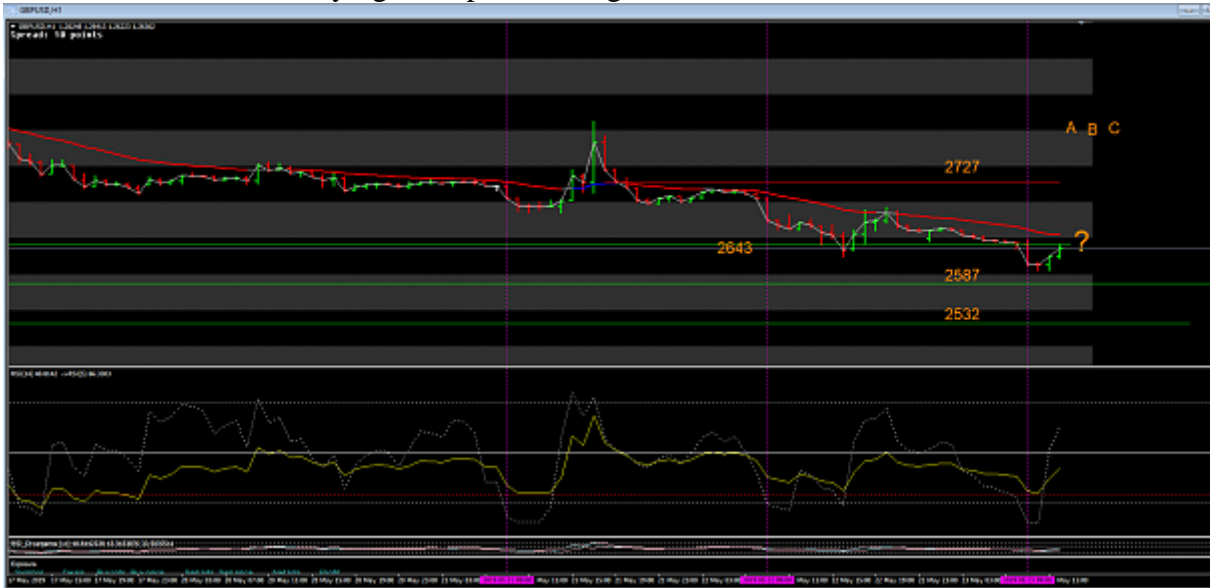


Nala66

May 23, 2019 5:34am | Post# 3161

1 Attachment(s)

Looks like the bulls are trying to stop the average



Nala66

May 23, 2019 5:44am | Post# 3165

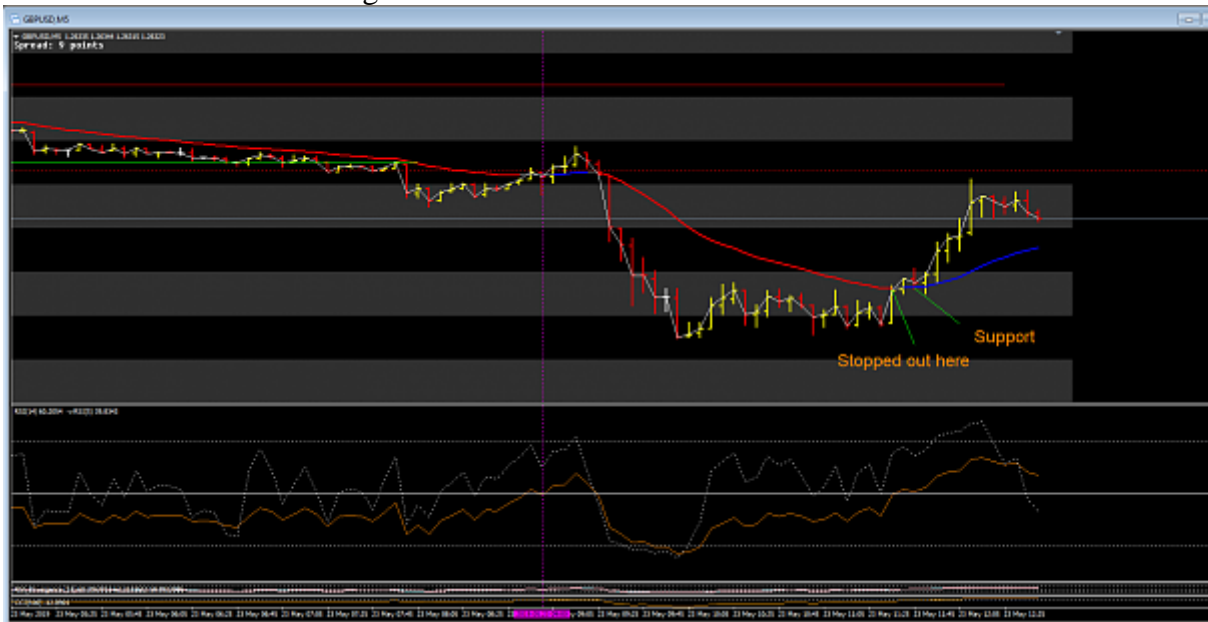
1 Attachment(s)

[Quoting witowito](#)

Disliked

{quote} Did not they found it here? {image}

Yes that is where I went long

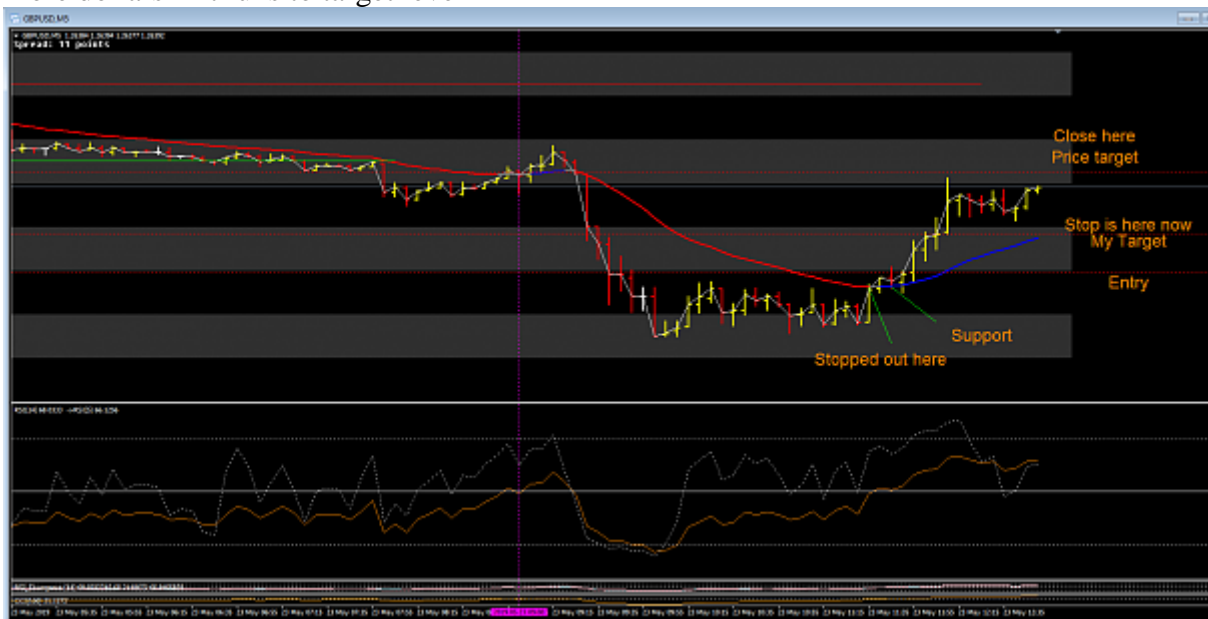


Nala66

May 23, 2019 5:53am | Post# 3166

1 Attachment(s)

You can see from this 5 min chart the profit is locked in with a stop but I may make a few more dollars if it runs to target level



Nala66

May 23, 2019 7:03am | Post# 3174

1 Attachment(s)

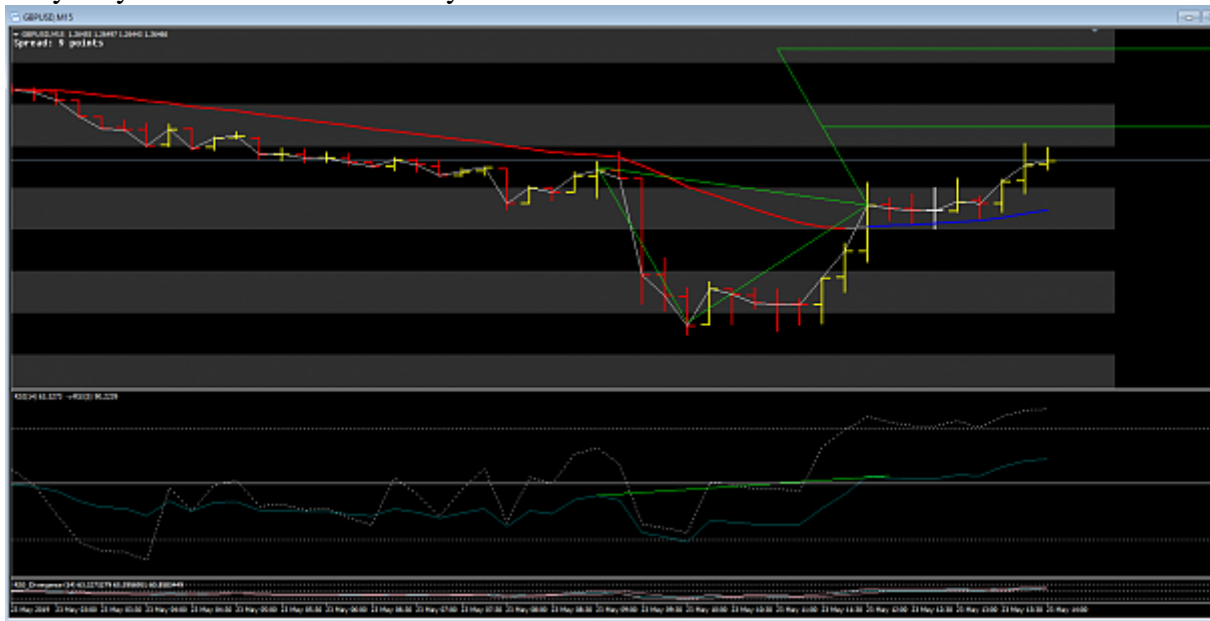
[Quoting witowito](#)

Disliked

{quote} I wanted to short it also but could not find clear ZOO point to do it. If price reach H1 ema wich is more or less 50% of an m5 abcd i will look for shorts. Or h1 fast RSI at 80levels. What ZOO do u have there to look for shorts? Thnks

The price is at a zoo point now check your 1H EMA.

Why do you WANT to short it why not trade with the market?



Nala66

May 24, 2019 2:49am | Post# 3192

1 Attachment(s)

This is what I did.

This goes against the convention I have been showing but I thought it was worth the risk..

On the 1 minute chart close to the start of the day I went long on those three dips with all three stops at A.

Notice how I was entering with the market going against me.

Then I got the stops to B for approx. BE.

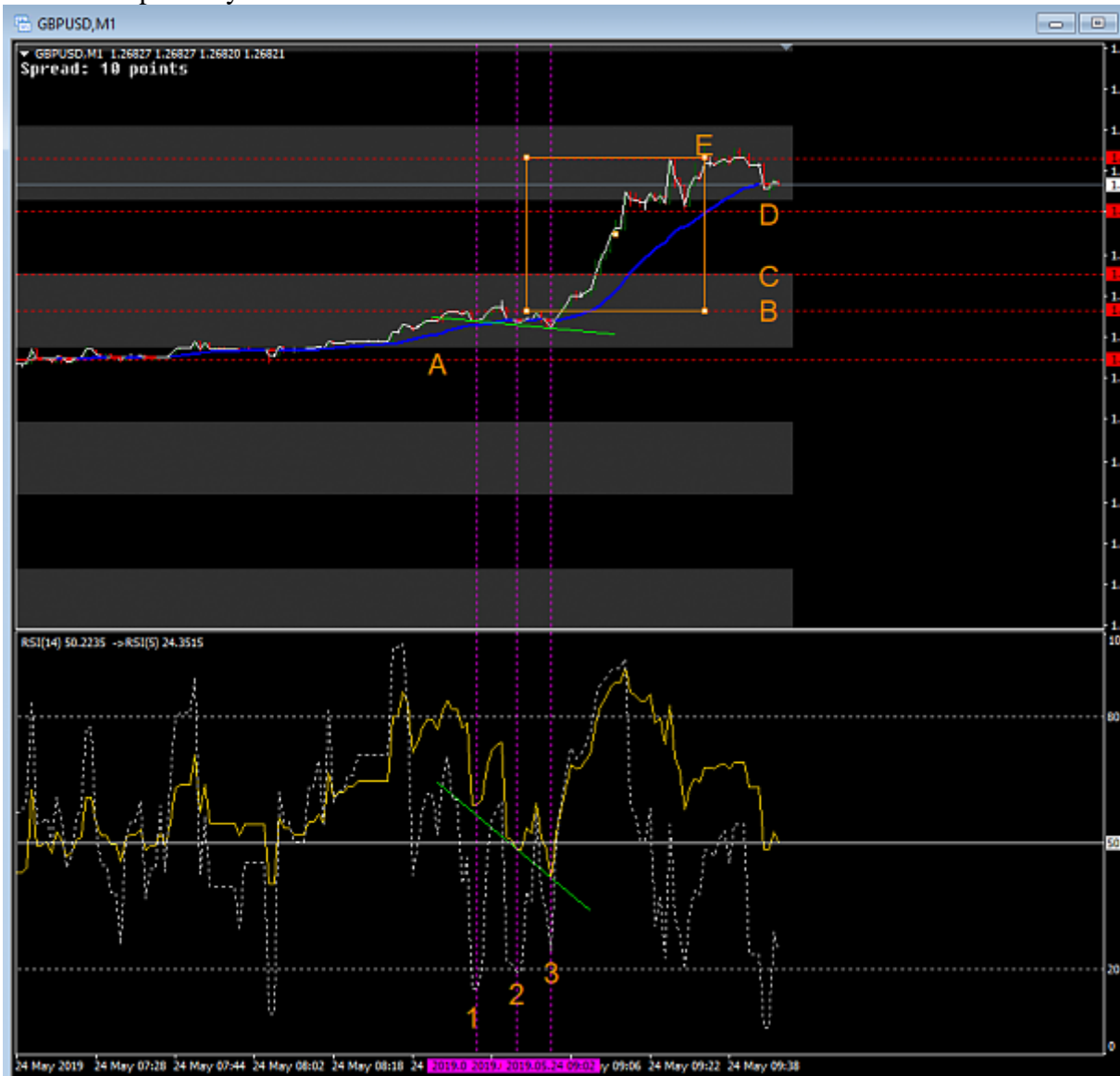
Then moved the stops to C locking in 5.

Then moved the stops to D locking in 13

Finally closed at E for 20.

I did not like the look of the chart by the time I closed price was in divergence for some time.

Best not to push my luck.



Nala66

May 24, 2019 3:20am | Post# 3195

1 Attachment(s)

[Quoting mikeeating](#)

Disliked

mine currently looks like this, I entered slightly late, as I stated late, but I got all 3 on at bull support , I hedged at the 1 hour average and just waiting now for what's going to happen
{image}

In a case like this Mike I would have moved all three stops to the yellow level shown and also the tp for the hedge.



Nala66

May 24, 2019 3:25am | Post# 3196

[Quoting Nala66](#)

Disliked

{quote} In a case like this Mike I would have moved all three stops to the yellow level shown and also the tp for the hedge. {image}

No my mistake the hedge was in Div so it should get back to the EMA so only the longs would be stopped out

Jazz1964

May 24, 2019 3:39am | Post# 3197

[Quoting Nala66](#)

Disliked

... I went long on those three dips with all three stops at A. Notice how I was entering with the market going against me. {image}

Seems you entered the 2nd and 3rd at a lower price than the 1st, this time.

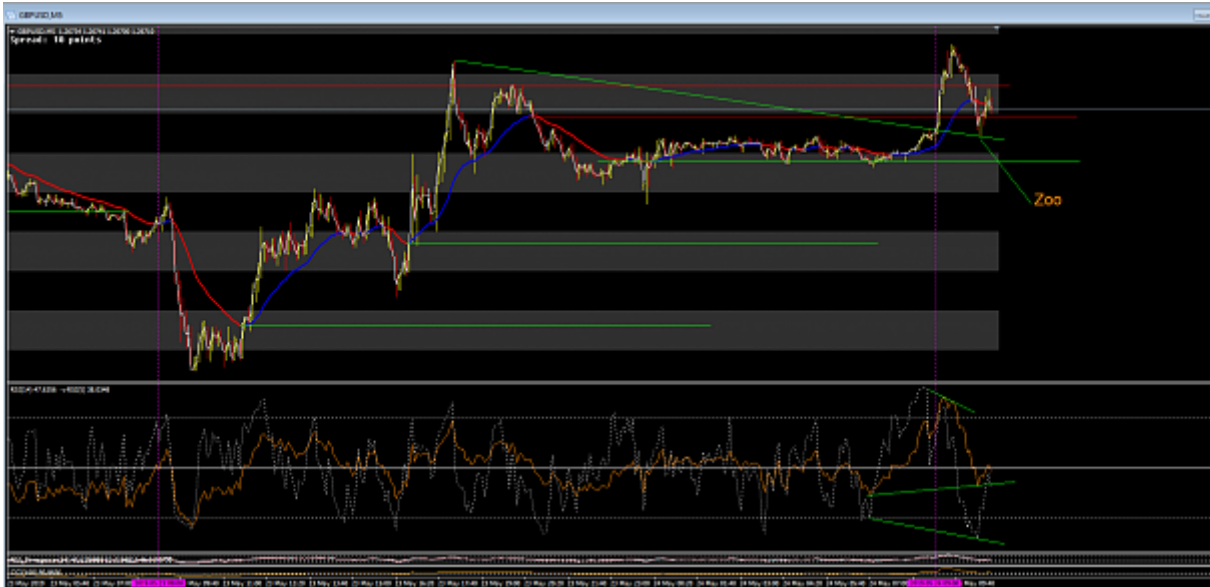
Nala66

May 24, 2019 3:47am | Post# 3201

1 Attachment(s)

Glad I am out this is getting messy.

Look at this 5 min chart



Nala66

May 24, 2019 5:03am | Post# 3208

1 Attachment(s)

Looks to me like the bulls are trying to stop that 4 hour average



Jazz1964

May 24, 2019 5:09am | Post# 3210

1 Attachment(s)

the spike high was my 40 pip TP, just the spread was inbetween argh
Closed it manually with +30 pip



Nala66

May 27, 2019 2:24am | Post# 3220

1 Attachment(s)

I am wondering what will happen when price gets to D here on the 1 hour



Nala66

May 27, 2019 2:33am | Post# 3224

1 Attachment(s)

[Quoting witowito](#)

Disliked

{quote} I was wondering the same cause its also 50% of a bigger one (yellow one) {image}

Yes that is correct I have that drawn in too..Magenta



Jazz1964

May 27, 2019 5:09am | Post# 3230

1 Attachment(s)

Done for today.

With the bear div's on H1, M15 and M5 my take was down. Although countertrend.

First trade was a loss.

Then 2 nice winners.



Nala66

May 28, 2019 8:06pm | Post# 3240

1 Attachment(s)

Looking at the 1 hour the average having failed the 2727 is now testing the opposite side of 2666 and is just about there.

Yesterday was very choppy and if one didn't get in at the 108 time (as Mike did) then you would probably have run into a lot of trouble in the chop.

On the hour only the one decent signal in the form of a smallish ABCD but even this took about 5 hours to execute.

The lower time frames got us in at the 108 to be short, good old 5 min chart.

A couple of hours ago the bears were in divergence (both regular bullish and RSI bullish) so we should see an attempt to run back up to the average. If the bears can overcome this then watch out for a rather large dive with an impulse bar dragging the EMA to a LL.

Anyway the story should unfold when we get to 108.

