



TS "Highway-60"

 **PowerfulForexTrading**
Trade like a professional

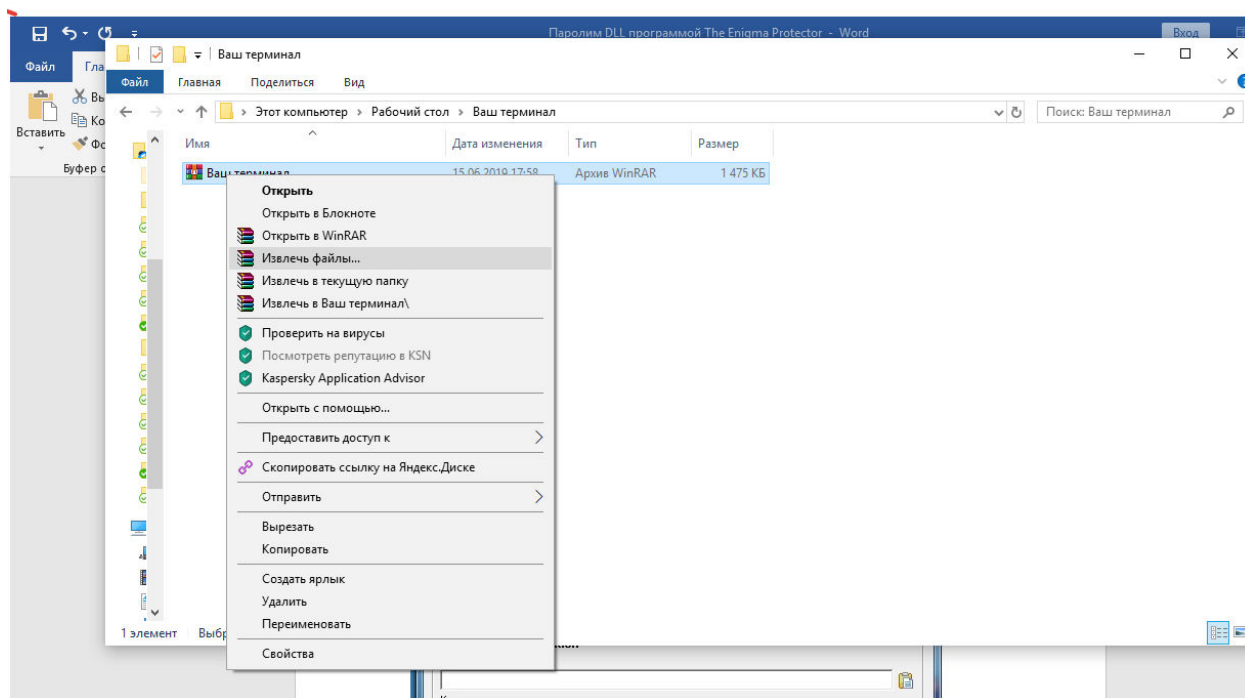
2020

Оглавление

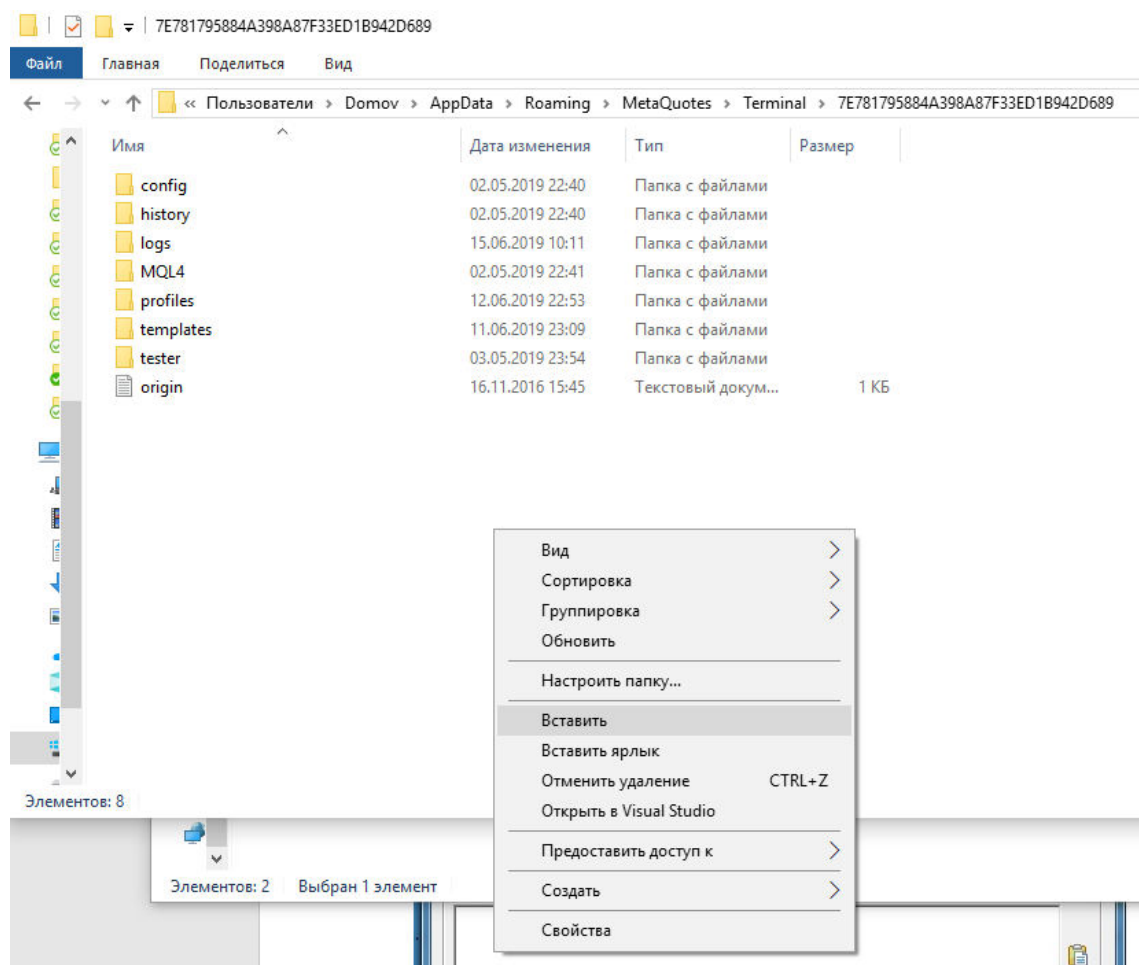
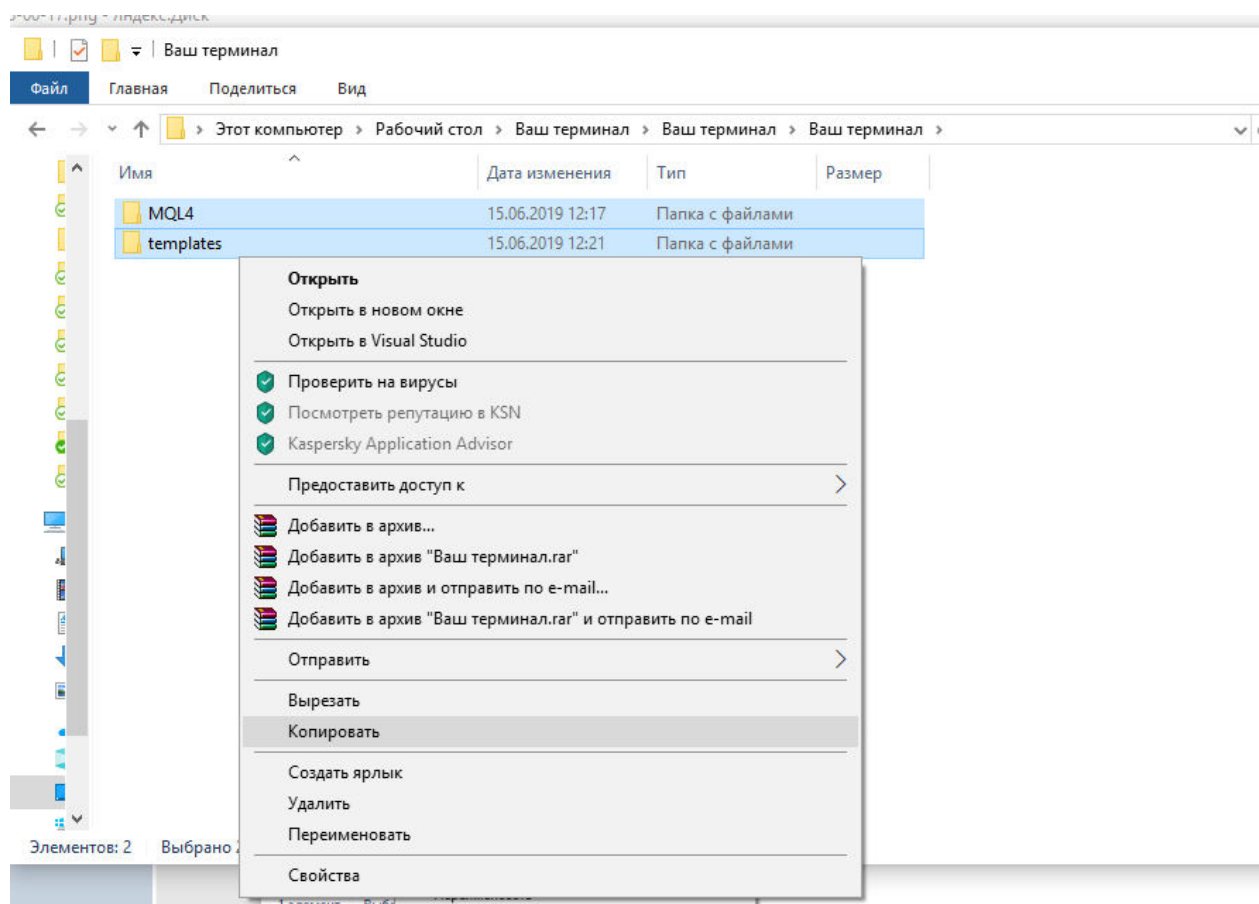
The procedure for installing and registering the Program.....	2
Template Installation	4
Making the terminal and the Trading System lighter	6
Conditions for opening / closing orders on the TS	7
Connection with me	12

The procedure for installing and registering the Program.

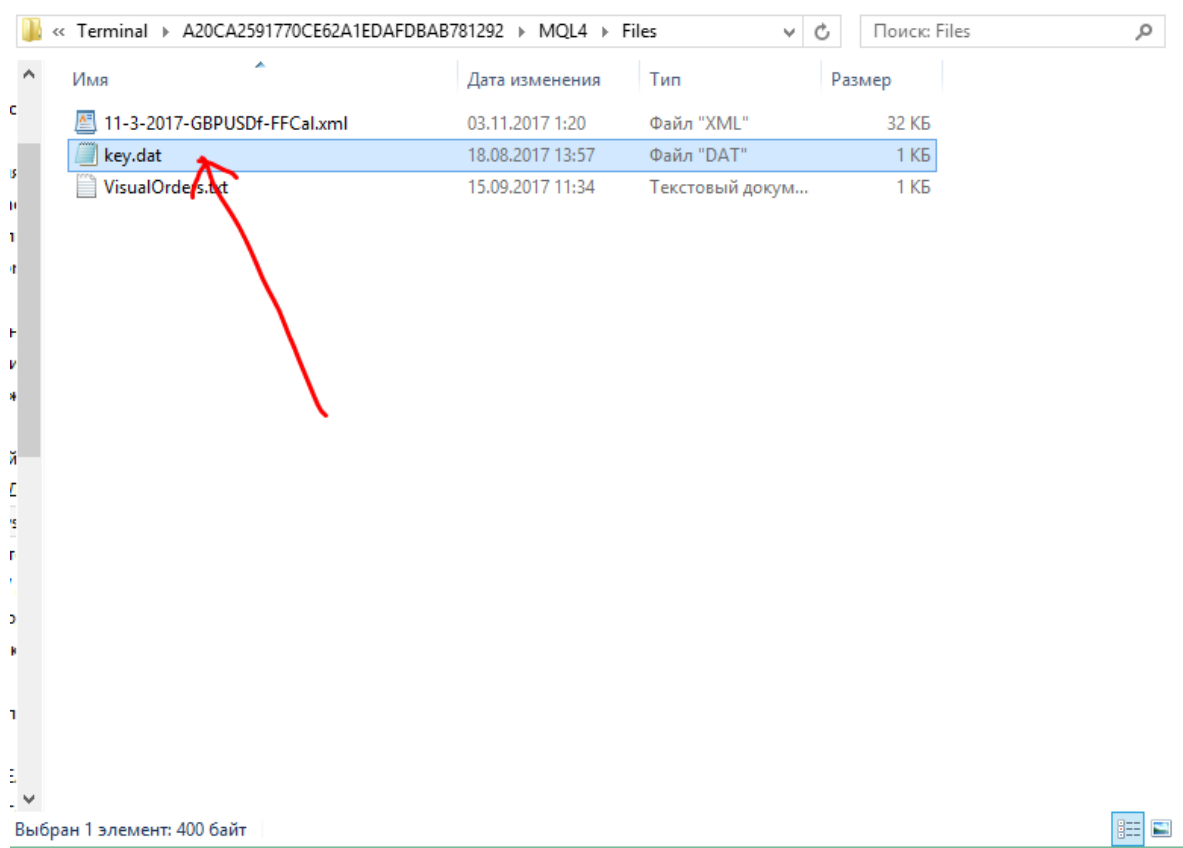
Unzip the ZIP or RAR archive received from me.



We copy the MQL4 and templates folders into the data directory of your terminal (the terminal whose number account you have sent me)!



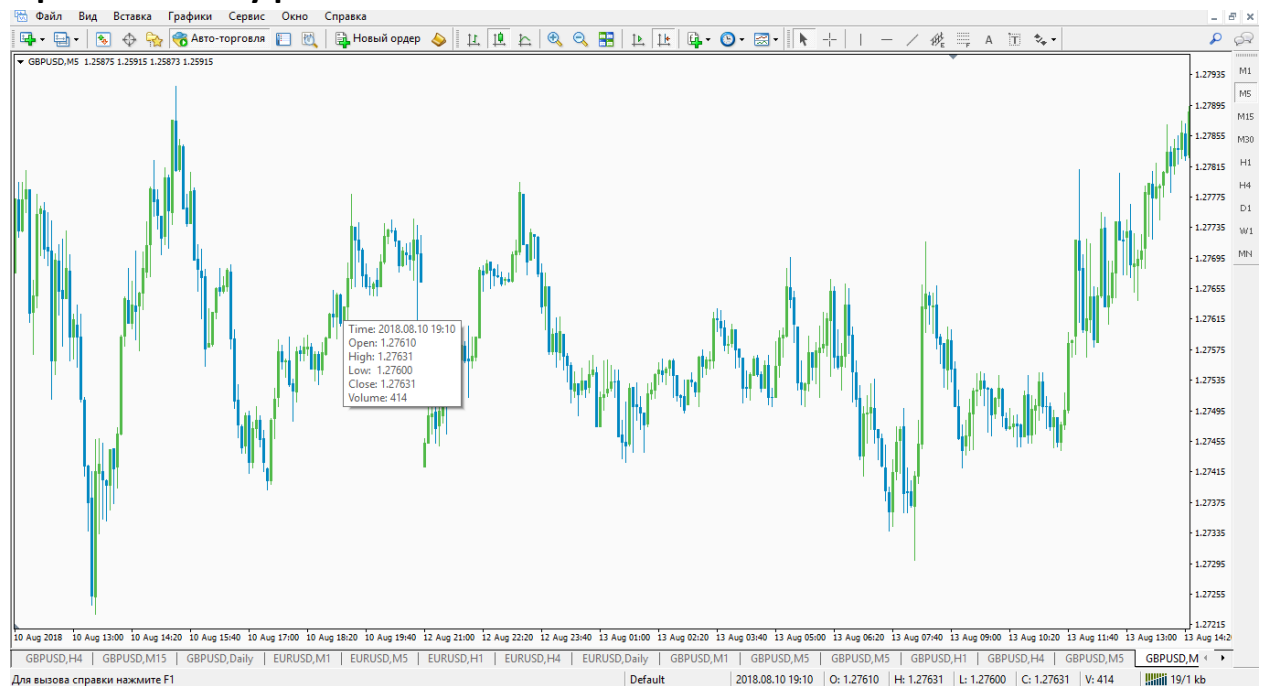
Make sure that the KEY.data file is installed in your terminal at the specified address.



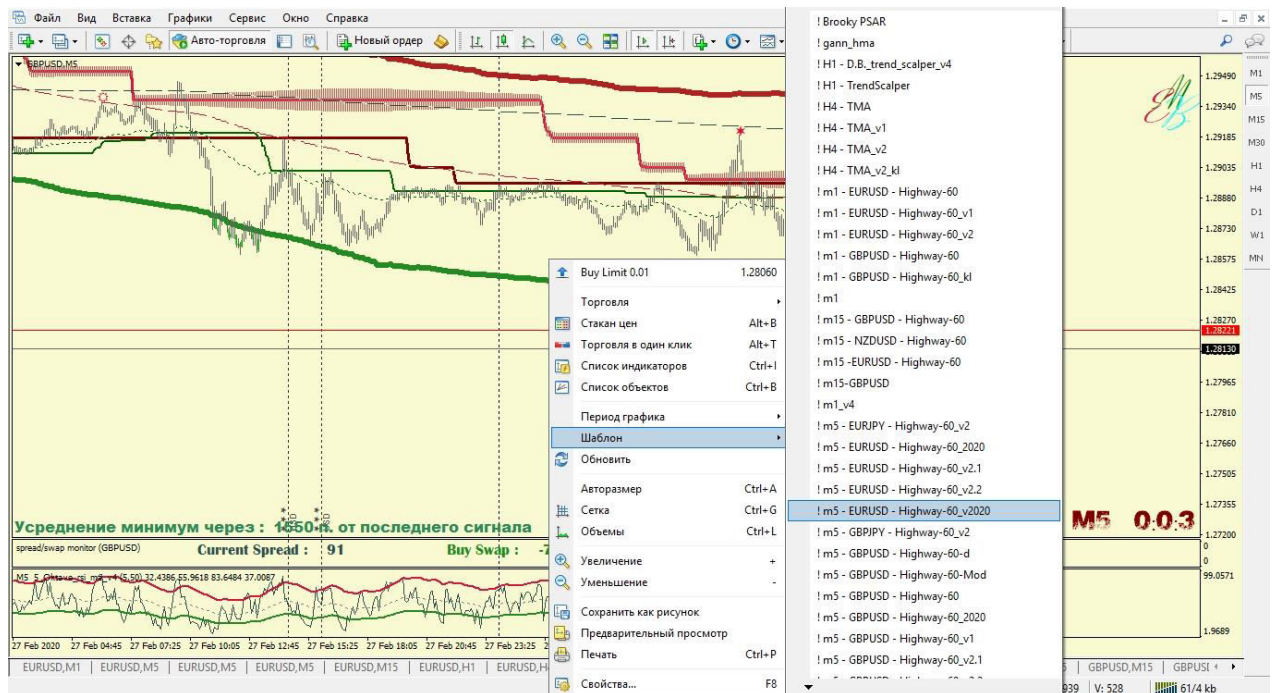
Template Installation

Open terminal

Open a currency pair GBPUSD m5 or EURUSD m5



On the chart, upload the template I sent for the corresponding instrument
(right-click on the chart of the instrument → Template → / Template sent by me/



You are need study on history, watch the video devoted to the TS "Highway-60".



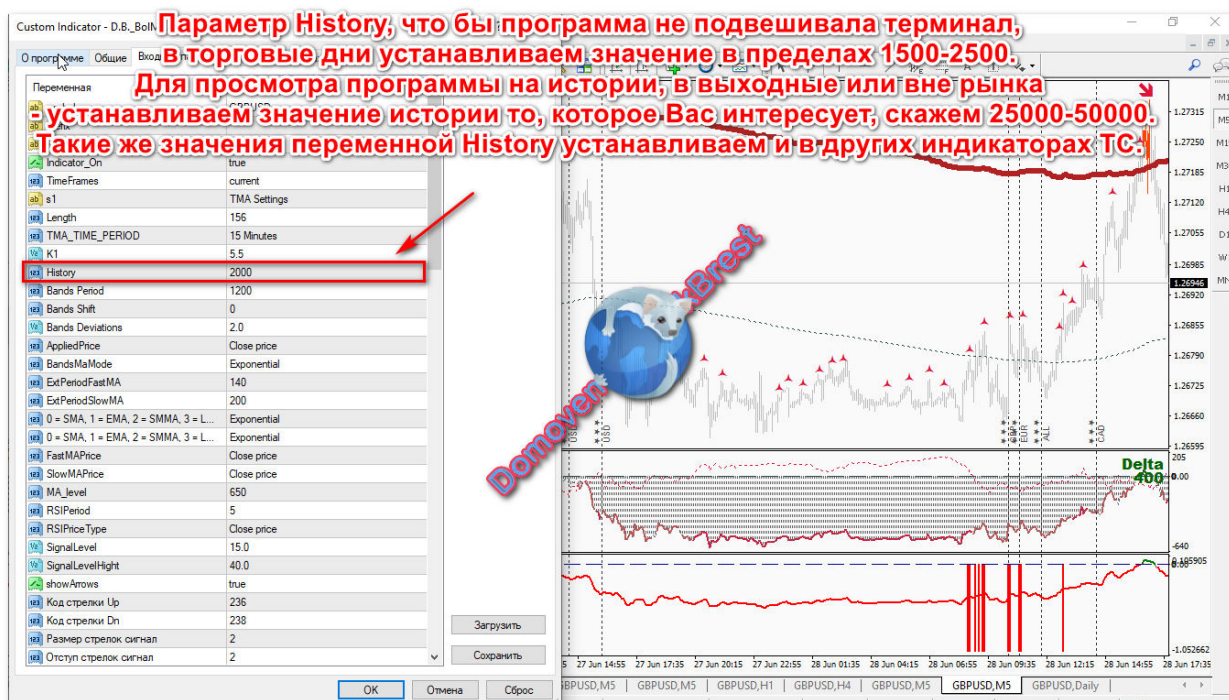
Have a good trade! All profit!!!

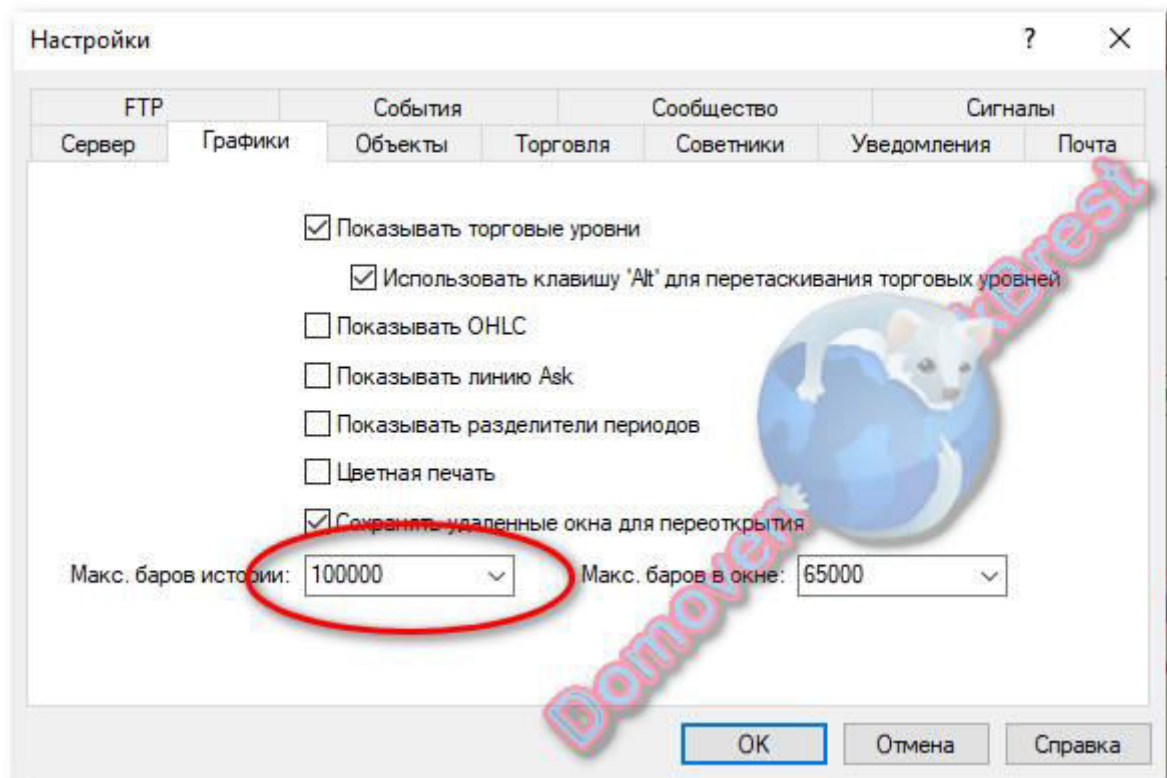
Making the terminal and the Trading System lighter

To work effectively with the trading system and obtain a stable profit, many factors are necessary. In this manual, I will not touch upon factors such as the psychological state of the trader and other nuances. I will dwell only on the technical component.

For successful work in the forex market, the terminal must “fly”. How to clean and how to facilitate the operation of the terminal you can find by clicking on the [LINK](#).

But cleaning and setting up the terminal is sometimes not enough. Modern indicators process a huge amount of input information, which naturally affects the speed of the entire terminal. For operational work with the Trading System, I recommend reducing the number of bars processed by the indicator to 2000-2500 (see screen). And use this option throughout the trading week. On weekends, when you conduct a “debriefing” and work with history, you can increase this parameter to the one you need, say 20,000-25,000 bars. At the same time, the parameter of the established indicator history should not exceed the parameter “Number of max. Bars” installed in your terminal. (see screen)

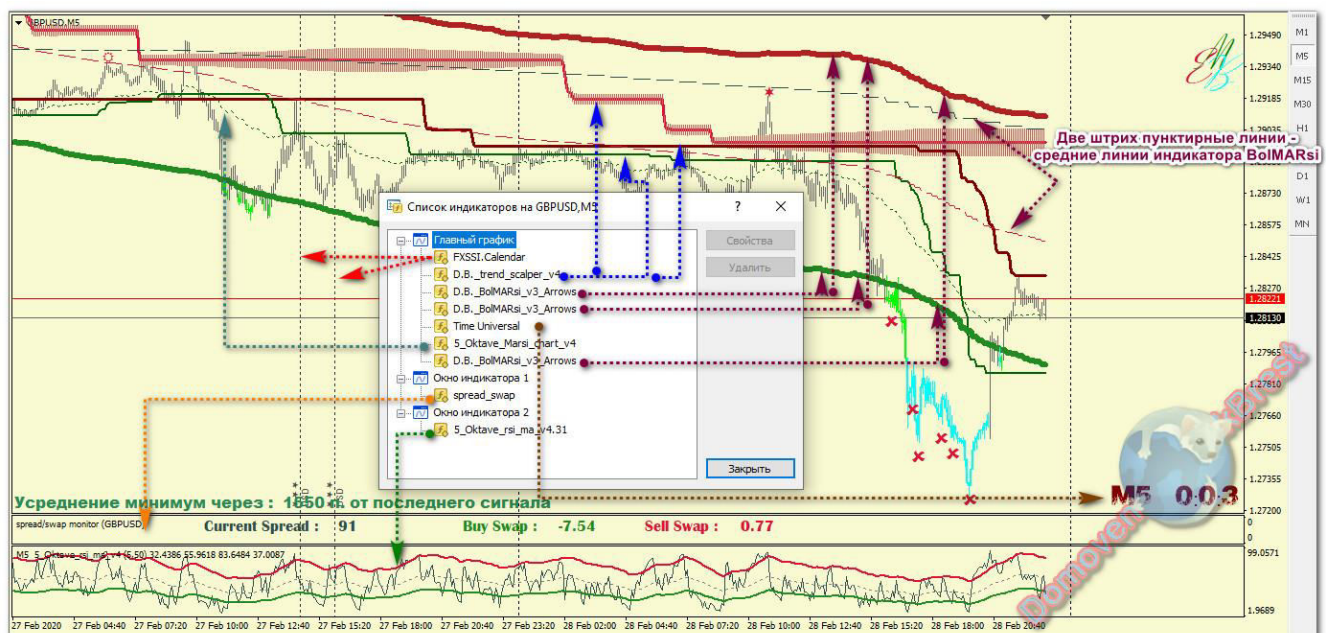




Conditions for opening / closing orders on the TS

Trading System "Highway-60-2020"

Trading System Indicators:



TS consists of 4 main indicators:

- 1) 1) D.B._trend_scalper_v4 - on the chart it is indicated by three lines: the colors Maroon, Green and the "furry" trendy two-color indicator.

- 2) 2) D.B._BolMARsi_v3_Arrows - a regression channel with external levels and a central dashed line. In the TS it is used with different settings.
- 3) 3) 5_Oktave_MaRsi_chart_v4 - dash-dot line of green color.
- 4) 4) In the basement - the oscillator 5_Oktave__rsi_ma_v4.

And from 3 information indicators:

- 1) FXSSI.Calendar - news indicator.
- 2) Time Universal - an indicator of time to the end of the specified TF
- 3) Spread-Swap - an indicator of spread and swap.

Types of signals and conditions for entry:

3 types of signals:

- Conservative
- Conservatively aggressive
- Aggressive

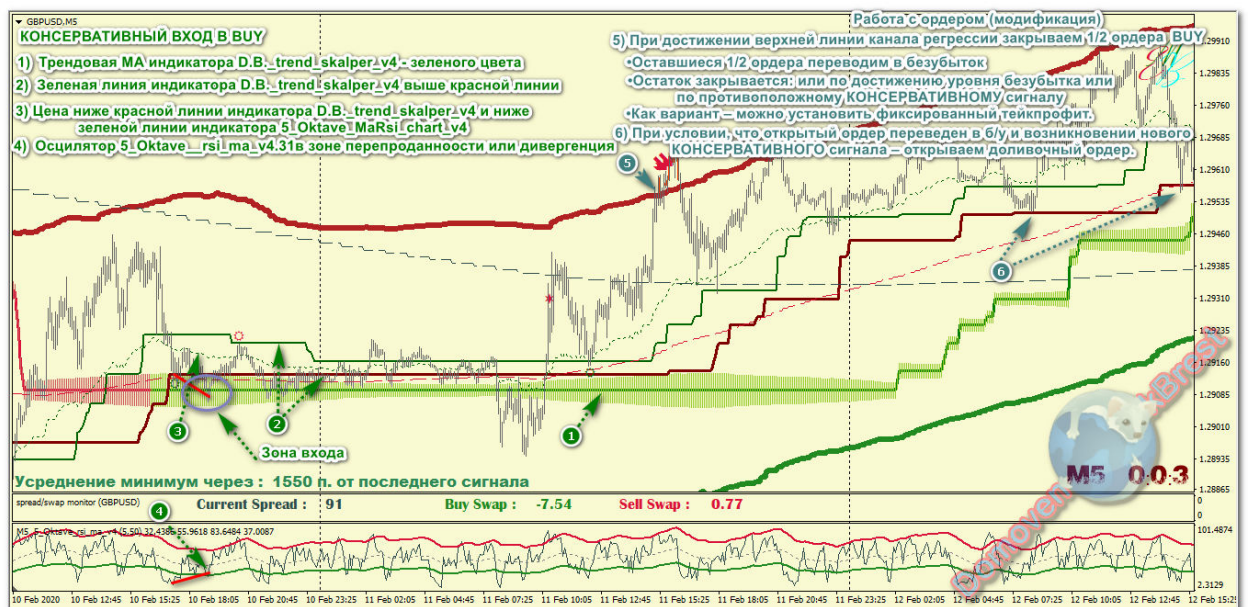
BUY:

Conservative Trade Entry (BUY)

- Trend (furry) MA indicator D.B._trend_skalper_v4 - green
- The green line of the indicator D.B._trend_skalper_v4 is above the red line
- The price is below the red line of the indicator D.B._trend_skalper_v4 and below the green line of the indicator 5_Oktave_MaRsi_chart_v4 (And the price is not higher than a third of the width of the regression channel).
- Oscillator 5_Oktave__rsi_ma_v4.31in the oversold zone or divergence

Work with an order (modification)

- When reaching the top line of the regression channel, close 1/2 BUY orders
- The remaining 1/2 orders are transferred to breakeven
- The remainder closes: either upon reaching the breakeven level or by the opposite CONSERVATIVE signal
- Provided that the open order has been transferred to b / y and the emergence of a new CONSERVATIVE signal BUY - open an additional order.

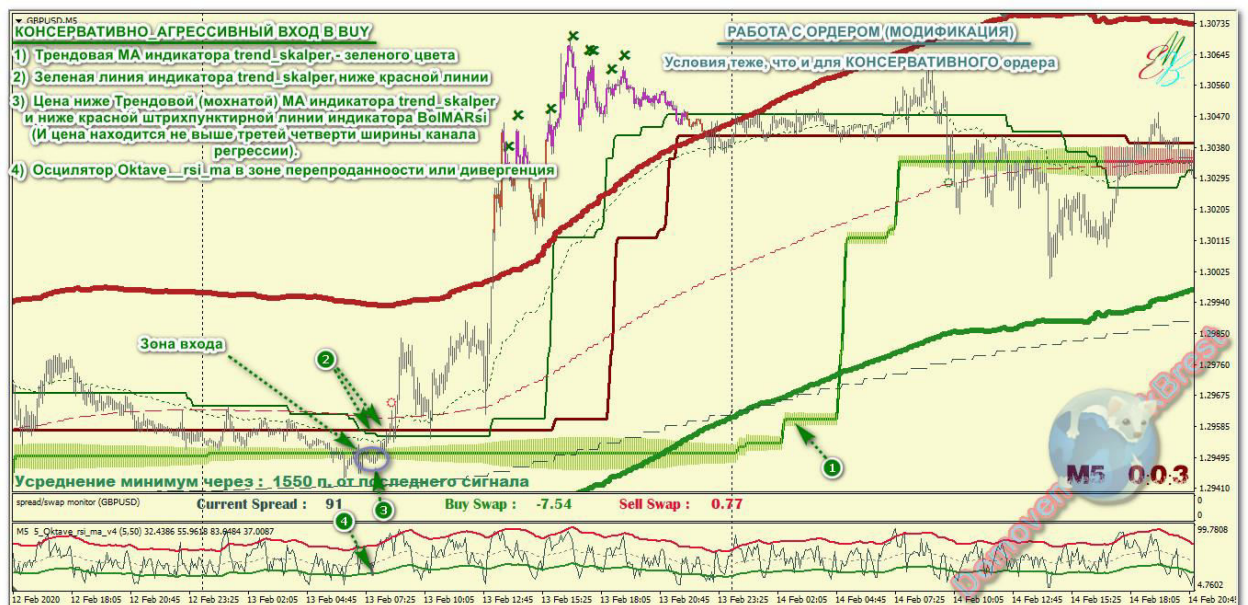


Conservatively aggressive trade entry (BUY)

- Trend (furry) MA of the indicator trend_skalper - green
- The green line of the trend_skalper indicator is below the red line
- The price is lower than the Trend (furry) MA of the trend_skalper indicator and below the red dash-dot line of the BolMARsi indicator (And the price is not higher than a third of the width of the regression channel).
- Oktave_rsi_ma oscillator in the oversold zone or divergence

Work with an order (modification)

- When reaching the top line of the regression channel, close 1/2 BUY orders
- The remaining 1/2 orders are transferred to breakeven
- The remainder closes: either upon reaching the breakeven level or by the opposite SELL CONSERVATIVE signal
- Provided that the open order has been transferred to b / y and the emergence of a new CONSERVATIVE signal BUY - open an additional order.

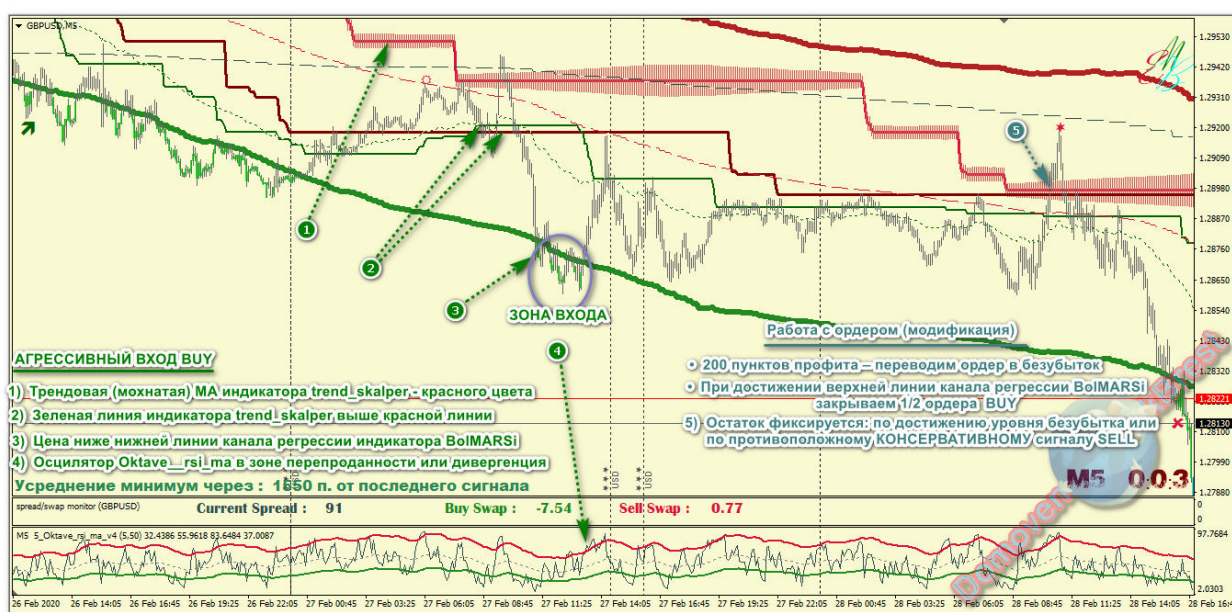


Aggressive trade entry (BUY)

- Trend (furry) MA of the indicator trend_skalper - red
- The green line of the trend_skalper indicator is above the red line
- The price is below the lower line of the BoIMARSi indicator regression channel
- Oktave__rsi_ma oscillator in the oversold zone or divergence

Work with an order (modification)

- 200 profit points - we transfer the order to breakeven
- When reaching the upper line of the BoIMARSi regression channel, close 1/2 BUY orders
- The remainder is fixed: upon reaching the breakeven level or by the opposite CONSERVATIVE signal SELL



SELL:

Conservative Trade Entry (SELL)

- Trend (furry) MA of the indicator trend_skalper - red
- The green line of the trend_skalper indicator is below the red line
- The price is above the red line of the trend_skalper indicator and above the green line of the Oktave_MaRsi_chart indicator (And the price is above the first quarter of the width of the regression channel).
- Oktave__rsi_ma oscillator in the overbought zone or divergence

Work with an order (modification)

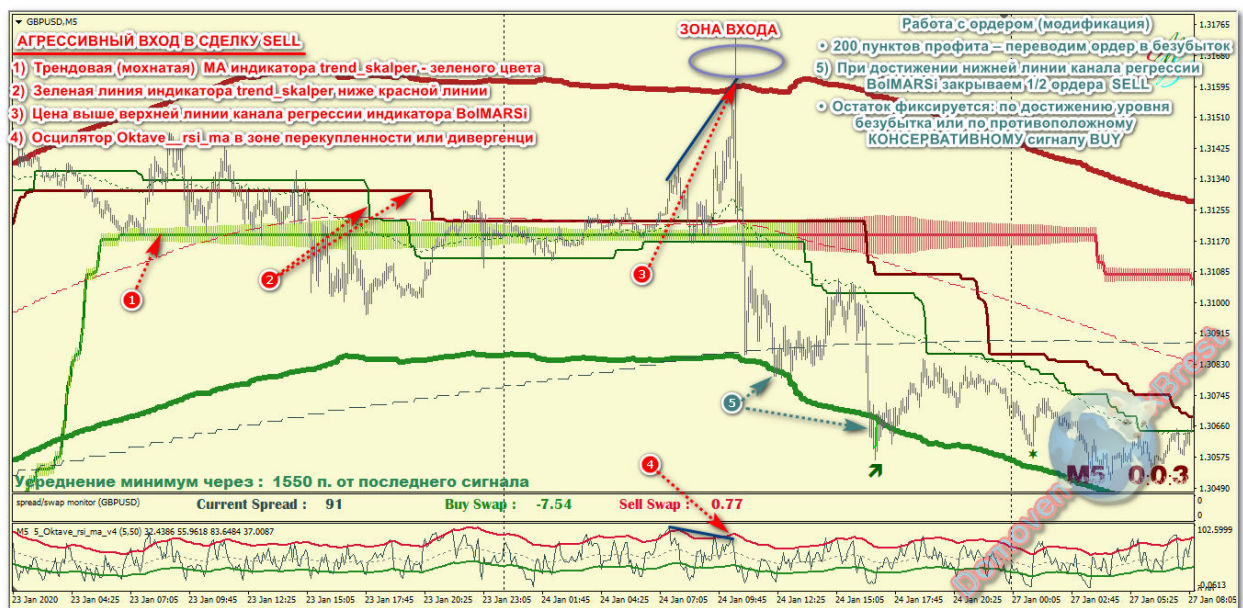
- When reaching the bottom line of the regression channel, close 1/2 SELL orders
- The remaining 1/2 orders are transferred to breakeven
- The remainder closes: either upon reaching the breakeven level or by the opposite CONSERVATIVE signal
- Provided that the open order has been transferred to b / y and the emergence of a new CONSERVATIVE signal SELL - open an additional order

Aggressive trade entry (SELL)

- Trend (furry) MA of the indicator trend_skalper - green
- The green line of the trend_skalper indicator is below the red line
- The price is above the upper line of the BolMARSi indicator regression channel
- Oktave__rsi_ma oscillator in the overbought zone or divergence

Work with an order (modification)

- 200 profit points - we transfer the order to breakeven
- Upon reaching the bottom line of the BolMARSi regression channel, close 1/2 SELL orders
- The remainder is fixed: upon reaching the breakeven level or by the opposite CONSERVATIVE signal BUY



Connection with me



If you have any questions during the study or operation with of the trading system, you can always ask me a question through one of the communication channels:

SKYPE:

- [Link](#)
- [Login - 291225035](#)
- [Login - DomovenokBrest](#)

Write me on the:

[English forum](#)

[Russian forum](#)

Email me: edgar.paypal.bart@gmail.com

I will answer all your question.

I wish you all health and profit friends !!!

