

Weekly Market Commentary

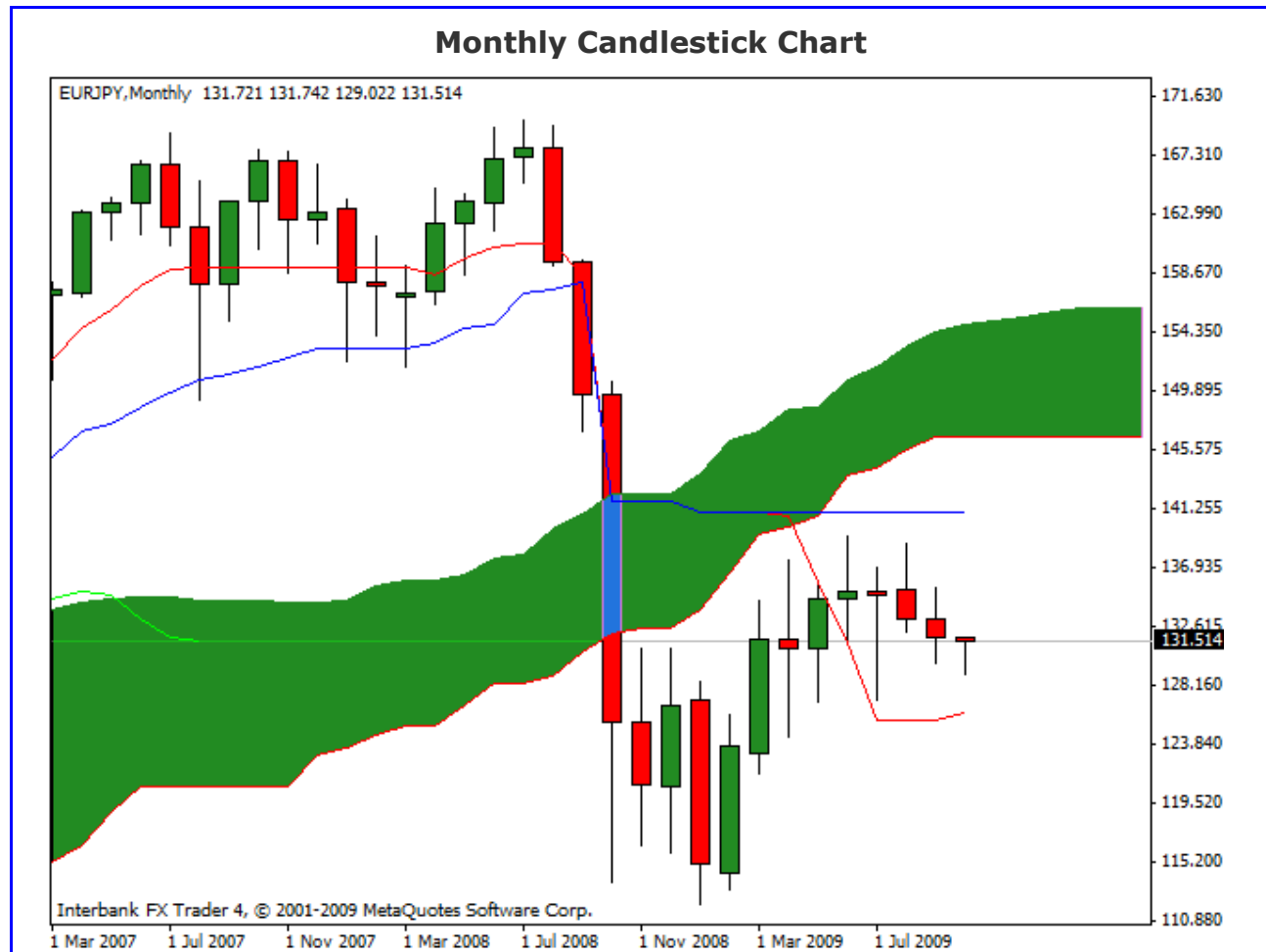
Ichimoku Kinko Hyo

Kumo Warriors

Technical Analysis

05 October 2009

EUR/JPY



Comment: The price continues below the cloud and the Kijun Sen but still above the Tenkan Sen. Chikou Span it's also below the price curve and the kumo future it's bearish. A break of Tenkan Sen will gives us a strong confirmation of Bearish Trend.

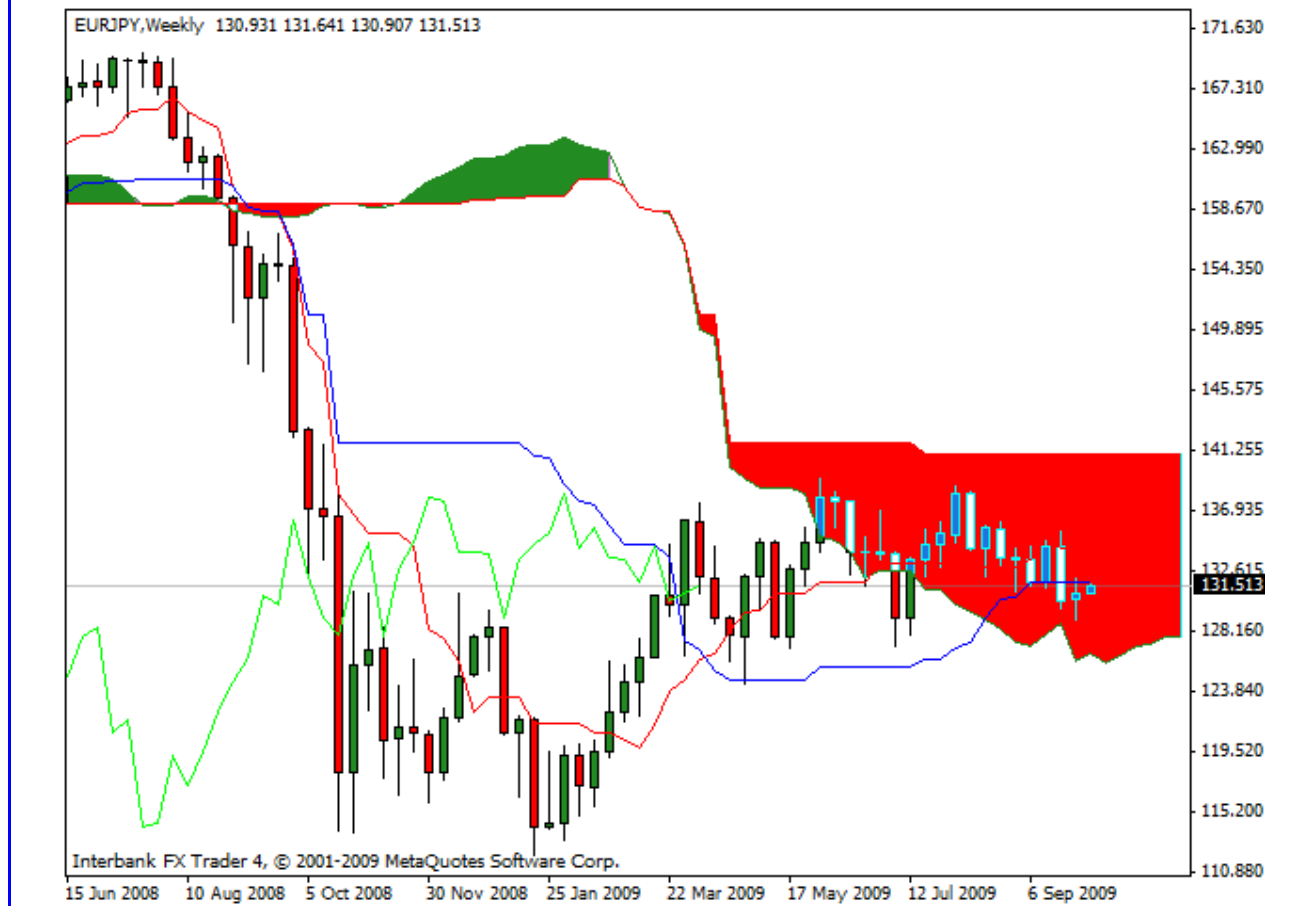
Disclaimer: all the data provided on this sheet are based upon the Ichimoku system analysis, all statements and expressions in here are personal opinions, and not meant as investment advice or solicitation.

Forex Factory: <http://www.forexfactory.com/showthread.php?t=190646>

Reports Archive: <http://www.4shared.com/dir/19807073/7e882875/sharing.html>

Email: KumoWarriors@gamil.com

Weekly Candlestick Chart



Comment: Price is still inside the Kumo and below Kijun Sen (Strong Resistance). Chikou Span it's just below the price curve (but as you can see the price need to break the area of 128.80 during this week to maintain the chikou below the price curve). Tenkan Sen it's above the Kijun and a cross will be necessary to confirm the Bearish moment.

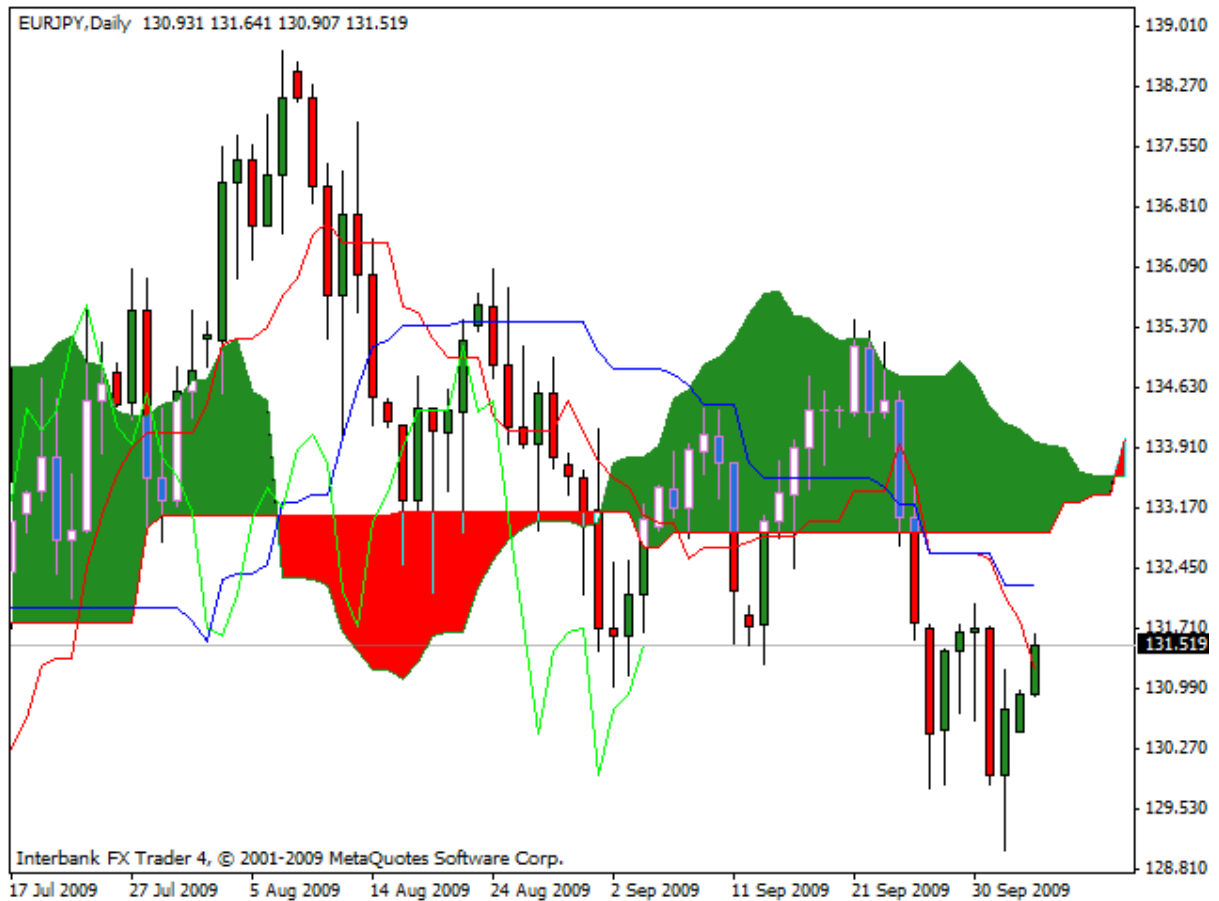
Disclaimer: all the data provided on this sheet are based upon the Ichimoku system analysis, all statements and expressions in here are personal opinions, and not meant as investment advice or solicitation.

Forex Factory: <http://www.forexfactory.com/showthread.php?t=190646>

Reports Archive: <http://www.4shared.com/dir/19807073/7e882875/sharing.html>

Email: KumoWarriors@gamil.com

Daily Candlestick Chart



Comment: Price below Kumo and Kijun Sen; Chikou Span below price curve; Tenkan Sen crossover the Kijun Sen and Kumo Future show us a nice picture of clear Bearish Trend. But as you can see, the Cloud are in horizontal aspect, and that mind low volatility.

Trends	
Major Trend (M)	Bearish
Median Trend (W)	Neutral
Minor Trend (D)	Bearish

Conclusion: Like last week, we can expect a down movement, with large target at 128,50 (SSA on Weekly) and 126.16 (Ts Monthly).

Disclaimer: all the data provided on this sheet are based upon the Ichimkou system analysis, all statements and expressions in here are personal opinions, and not meant as investment advice or solicitation.

Forex Factory: <http://www.forexfactory.com/showthread.php?t=190646>

Reports Archive: <http://www.4shared.com/dir/19807073/7e882875/sharing.html>

Email: KumoWarriors@gamil.com