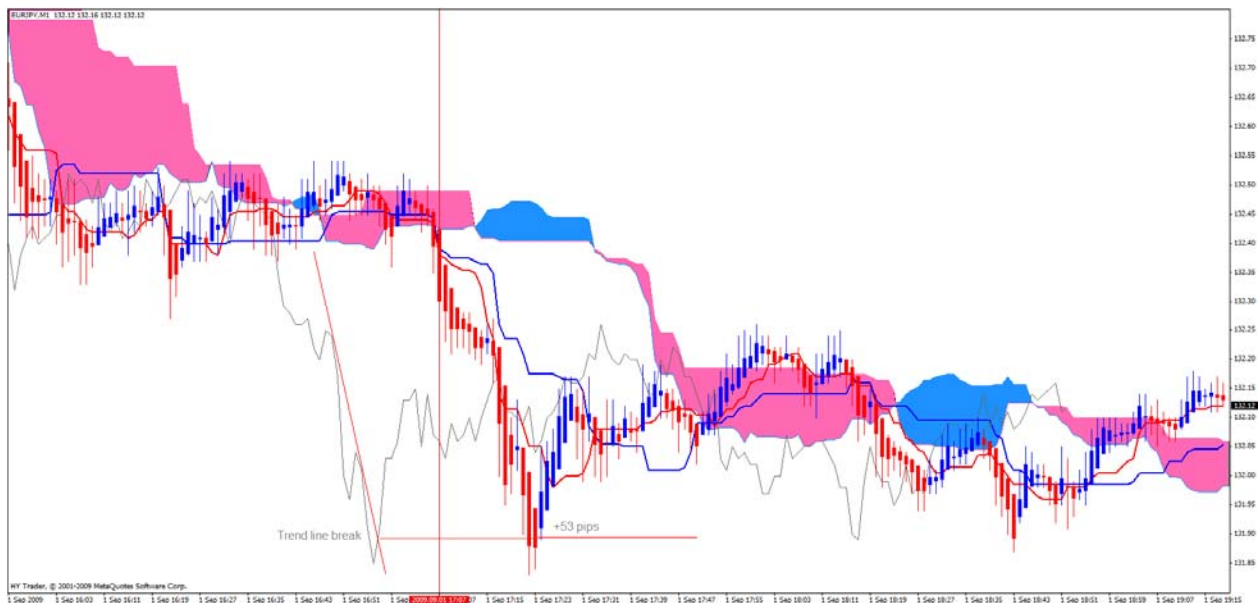
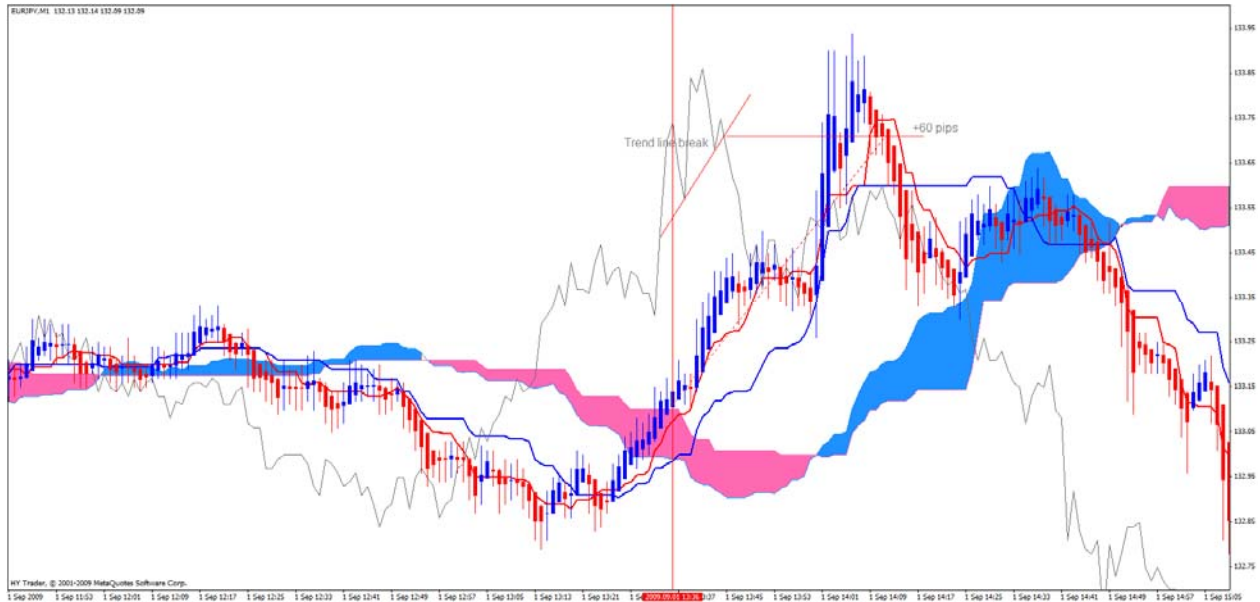


I think the way things are now; we are underutilizing the power of ichimoku. There are 5 strategies that will allow almost endless opportunities to enter the market but one must strictly adhere to the rules with some minor discretion that comes with experience. I have been using shorter TF with the strong TS/KS signal entry and exiting when the Heikin Ashi shows signs of reversal, but I found that a more powerful signal is what I will call the Chikou span trend line break (CSTLB). I have also found that the same TLB technique could be used for countertrend plays with great success (more of that will come later).

Meanwhile check the following kumo breakout trades on M1, +206 pips total, that were taken on a demo account but I'm past that stage now.





Kind regards.