

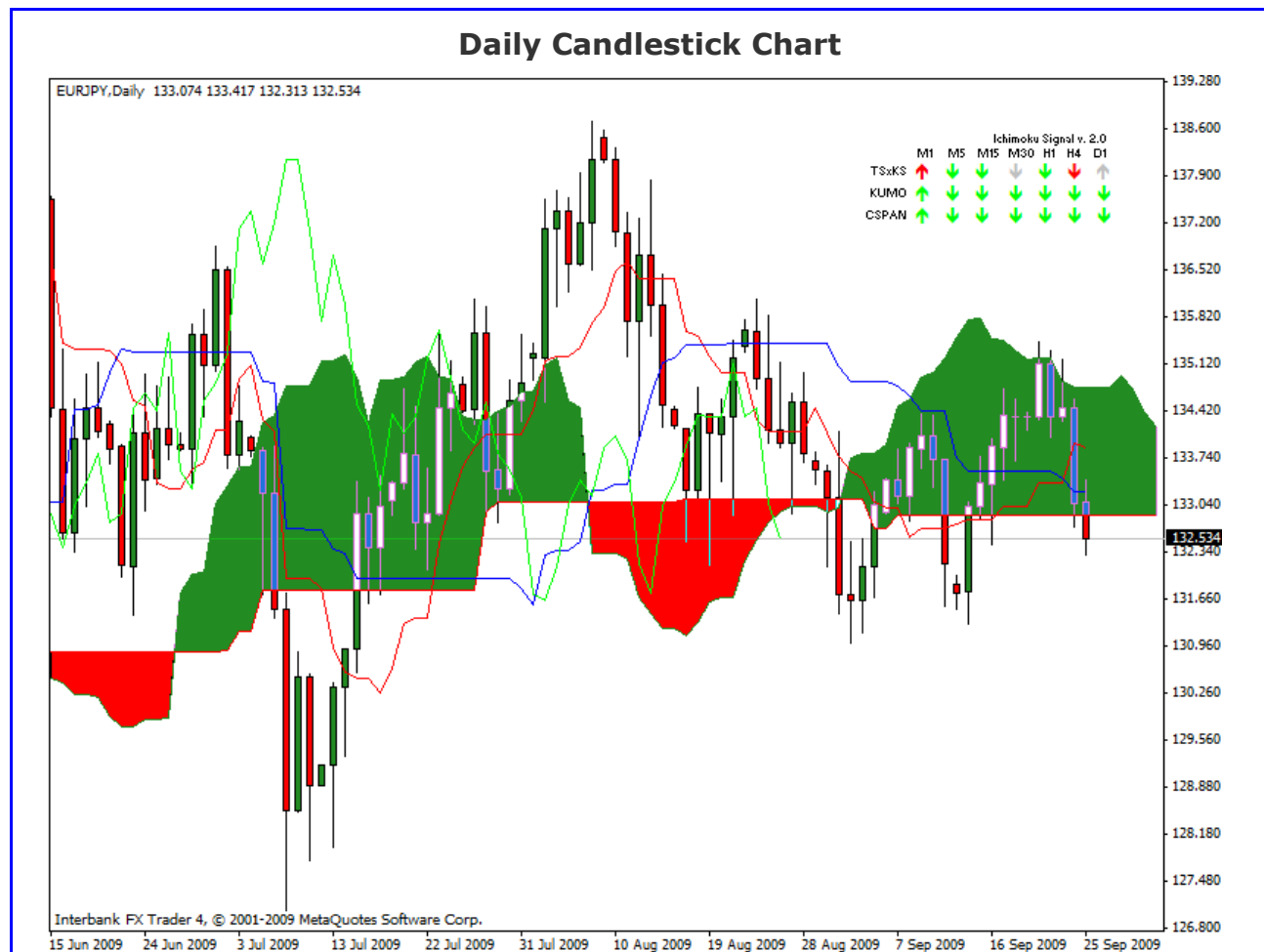
Daily Market Commentary

Ichimoku Kinko Hyo

Kumo Warriors

Technical Analysis

25 September 2009
EUR/JPY



Comment: The break on the lower side of the Cloud will give us a possibility of a resurrection of the bearish Trend. The Tenkan sen it's still under the Kijun and we can expect a cross on a couple of days. The Chikou Span it's below the price curve supporting the Bearish moment.

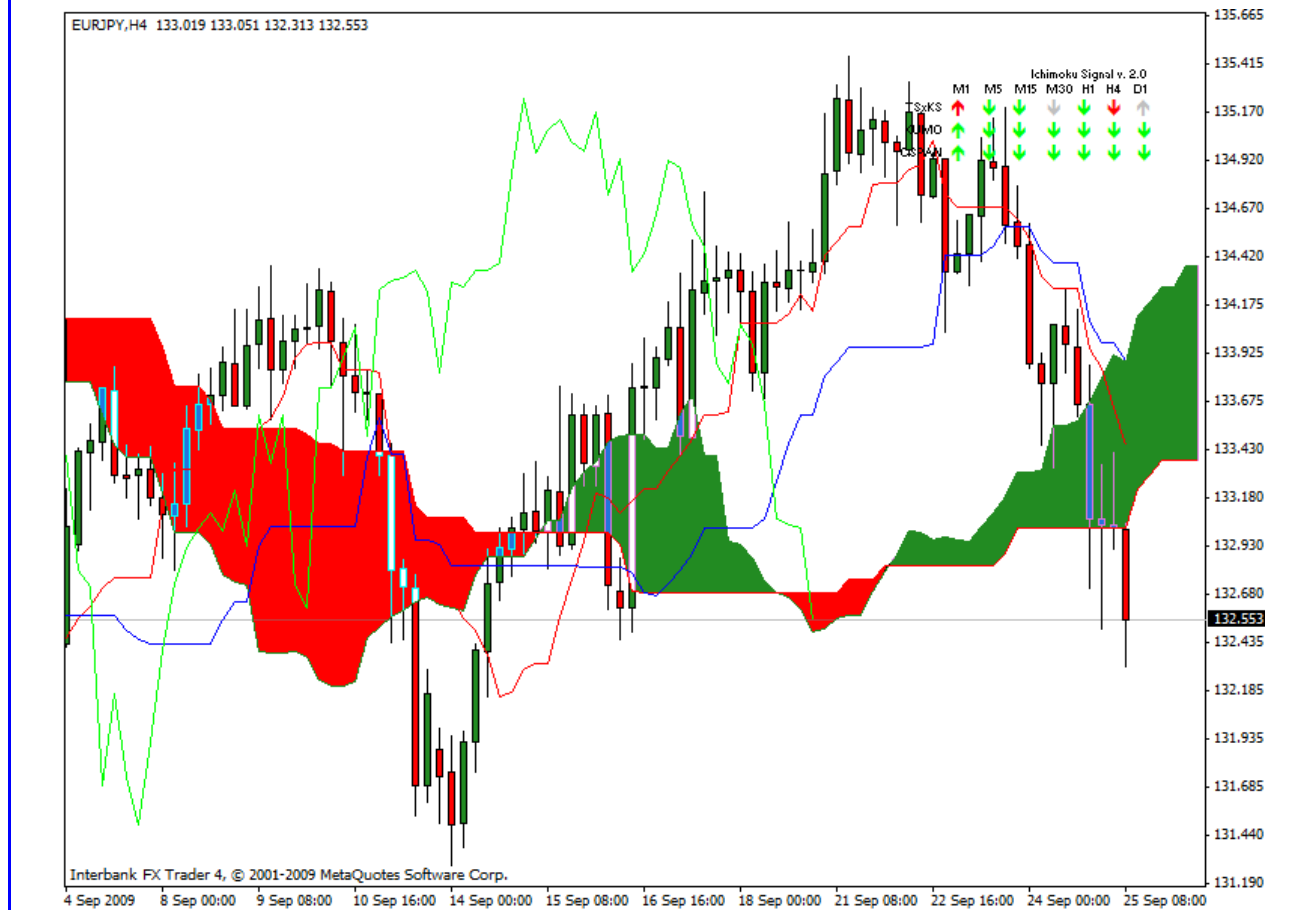
Disclaimer: all the data provided on this sheet are based upon the Ichimoku system analysis, all statements and expressions in here are personal opinions, and not meant as investment advice or solicitation.

Forex Factory: <http://www.forexfactory.com/showthread.php?t=190646>

Reports Archive: <http://www.4shared.com/dir/19807073/7e882875/sharing.html>

Email: KumoWarriors@gamil.com

4 Hr. Candlestick Chart



Comment: As I mentioned yesterday on this chart the uptrend was over and now it's in a clear bearish trend. The price it's below the Cloud and the Kijun Sen and also the Chikou Span it's below the price curve.

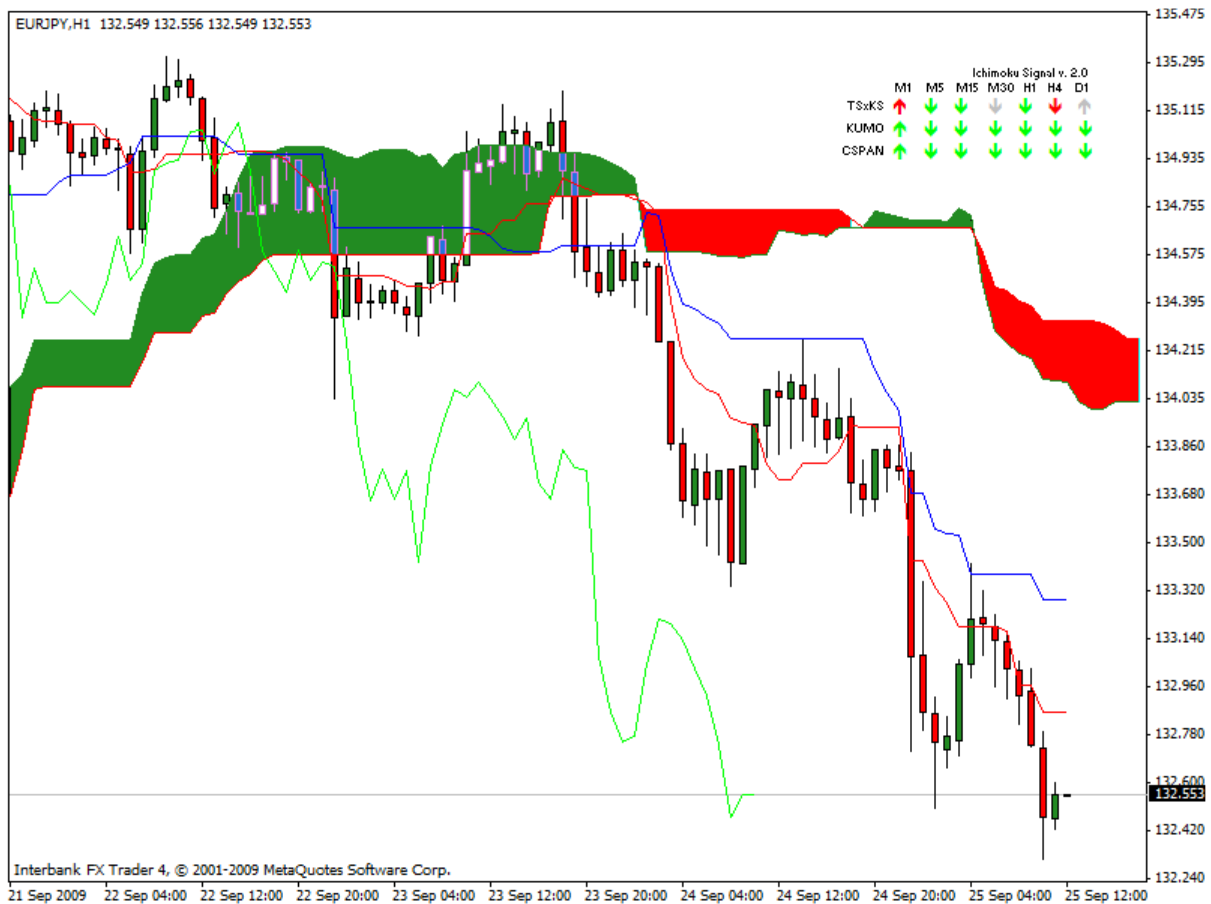
Disclaimer: all the data provided on this sheet are based upon the Ichimoku system analysis, all statements and expressions in here are personal opinions, and not meant as investment advice or solicitation.

Forex Factory: <http://www.forexfactory.com/showthread.php?t=190646>

Reports Archive: <http://www.4shared.com/dir/19807073/7e882875/sharing.html>

Email: KumoWarriors@gamil.com

1 Hr. Candlestick Chart



Comment: Following with the Bearish moment as we mentioned yesterday and as you can see on the last three trades on this pair, based on this chart, the Bullish Trend it's strong. But a little correction (or pullback) will be expected and the price can go between the Tenkan Sen and Kijun Sen area.

Trends	
Major Trend (D)	Bearish
Median Trend (H4)	Bullish
Minor Trend (H1)	Strong Bearish

Conclusion: As you know I don't prefer to trade on Fridays, but a good signal was generated a few minutes ago on 5M chart, short signal obviously, following the Main Trend.

Disclaimer: all the data provided on this sheet are based upon the Ichimoku system analysis, all statements and expressions in here are personal opinions, and not meant as investment advice or solicitation.

Forex Factory: <http://www.forexfactory.com/showthread.php?t=190646>

Reports Archive: <http://www.4shared.com/dir/19807073/7e882875/sharing.html>

Email: KumoWarriors@gamil.com