

Daily Market Commentary

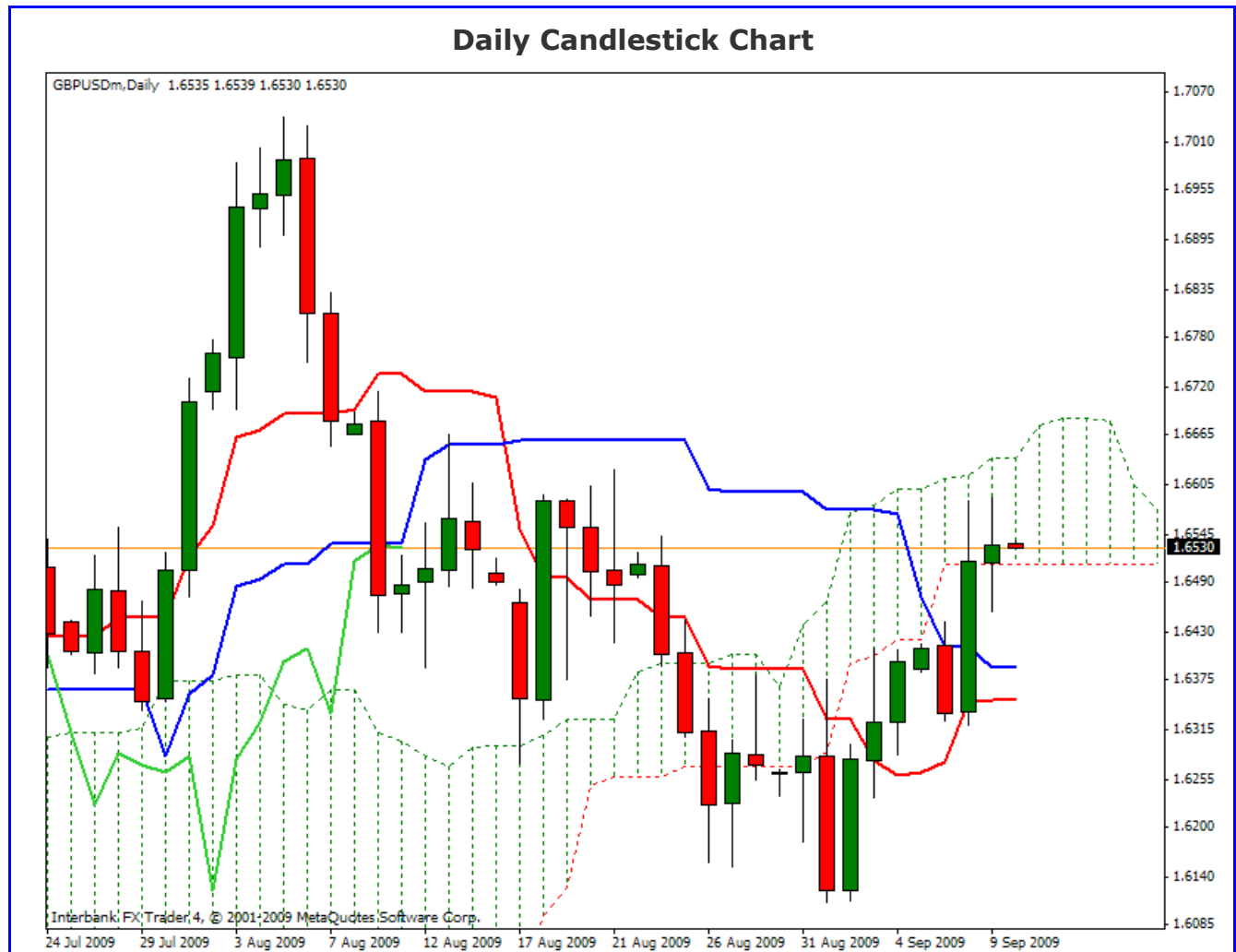
Ichimoku Kinko Hyo

Kumo Warriors

Technical Analysis

00:15 GMT 10 September 2009

GBPUSD



Comment:

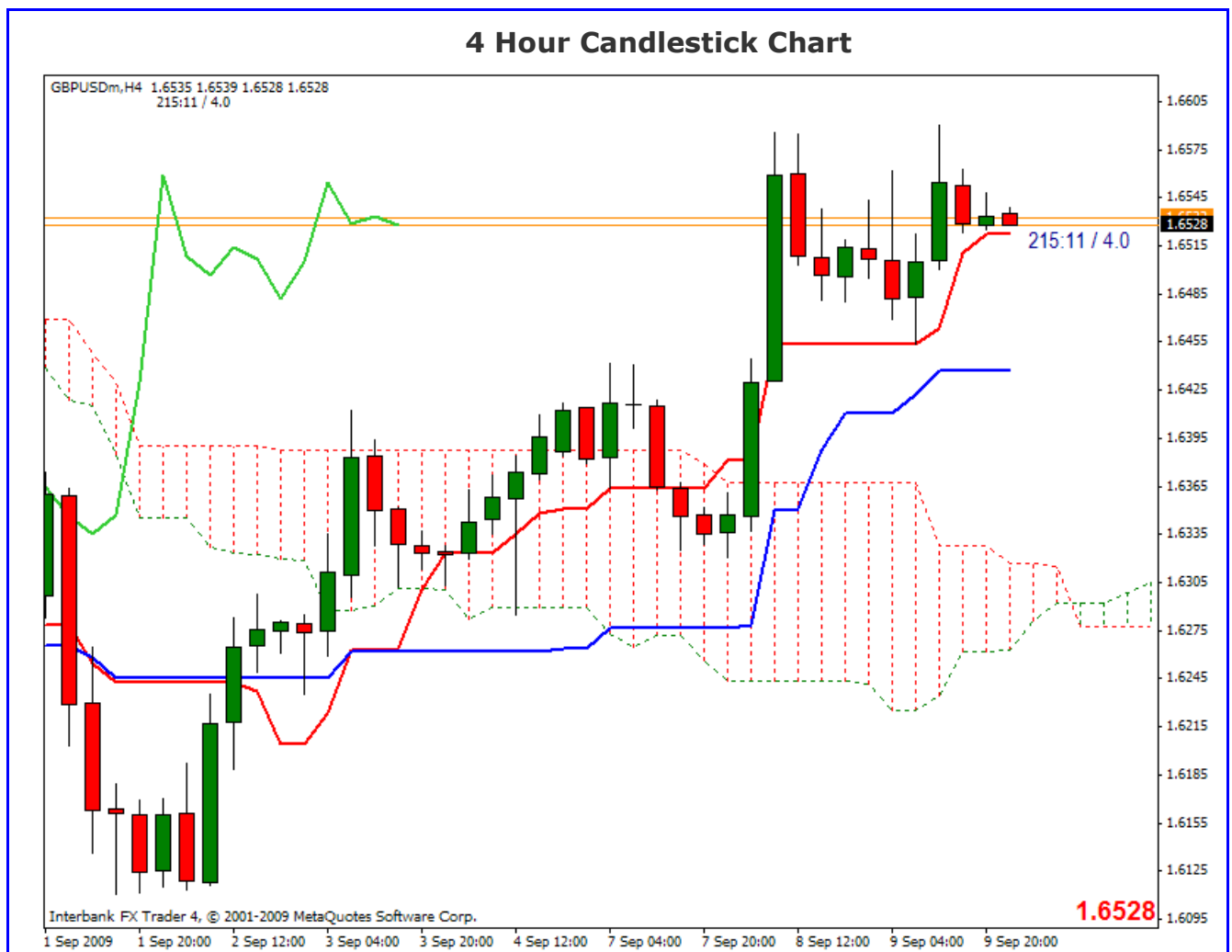
The Ts/Ks, Kumo and C-span are all giving conflicting signals, so I give this a no trend chart (Neutral).

Disclaimer: all the data provided on this sheet are based upon the Ichimoku system analysis, all statements and expressions in here are personal opinions, and not meant as investment advice or solicitation.

Forex Factory: <http://www.forexfactory.com/showthread.php?t=190646>

Reports Archive: <http://www.4shared.com/dir/19807073/7e882875/sharing.html>

Email: KumoWarriors@gamil.com



Comment:

A weak Ts/Ks bullish cross, but price is trading above the Kumo with a strong C-span .

Price is currently in a pullback/ range.

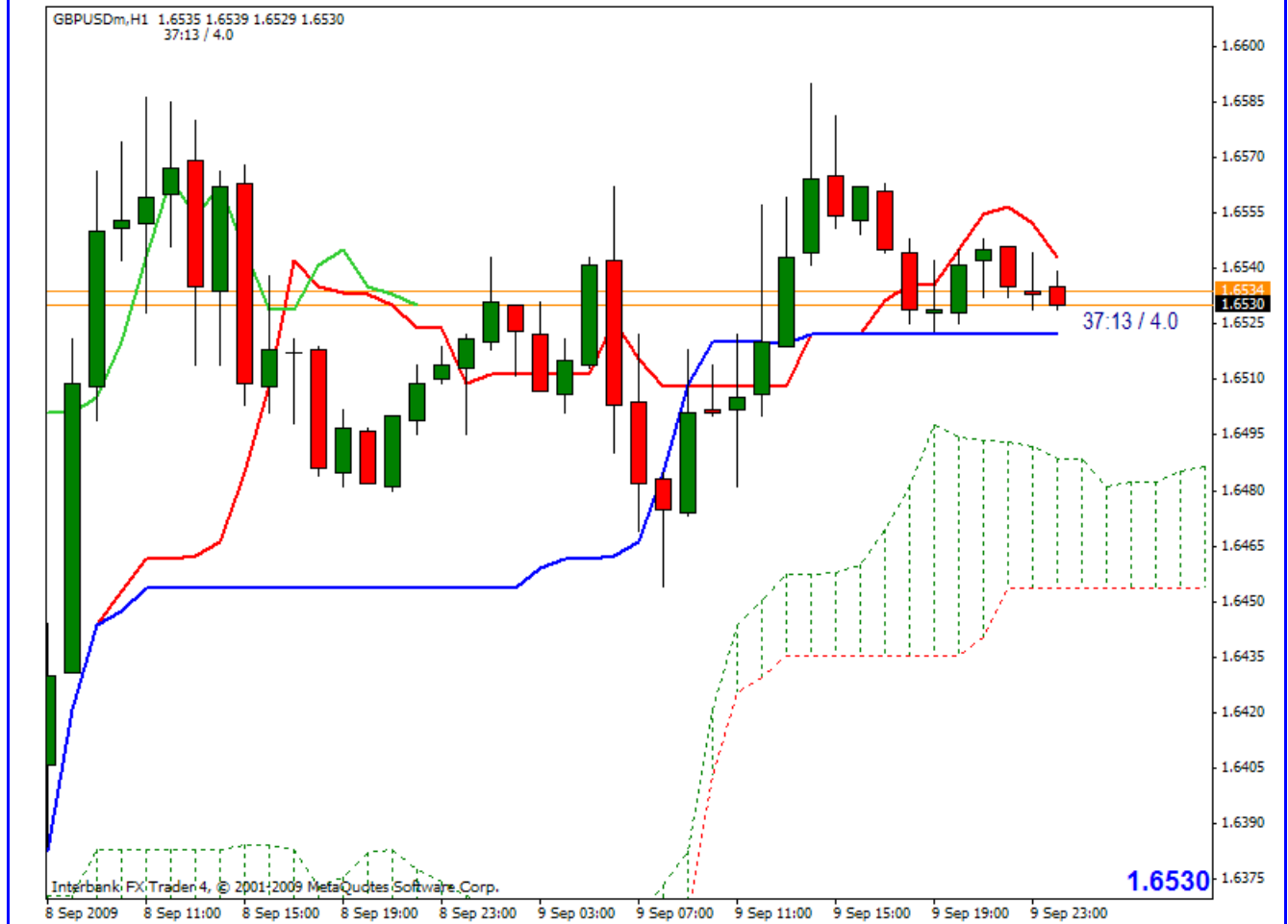
Disclaimer: all the data provided on this sheet are based upon the Ichimkou system analysis, all statements and expressions in here are personal opinions, and not meant as investment advice or solicitation.

Forex Factory: <http://www.forexfactory.com/showthread.php?t=190646>

Reports Archive: <http://www.4shared.com/dir/19807073/7e882875/sharing.html>

Email: KumoWarriors@gamil.com

1 Hour Candlestick Chart



Comment:

A great view of the current 4 hour pullback.

Strong Ichi signals across the board on this chart.

But price is trading between the Ts/Ks. The Ks is Flat drawing price to it.

Trends	
Major Trend (D)	Neutral
Median Trend (4hr)	Bullish
Minor Trend (1Hr)	Neutral Bullish

Conclusion: I am Neutral on this pair so I will be standing by on this one until after the Asian session.

Disclaimer: all the data provided on this sheet are based upon the Ichimoku system analysis, all statements and expressions in here are personal opinions, and not meant as investment advice or solicitation.

Forex Factory: <http://www.forexfactory.com/showthread.php?t=190646>

Reports Archive: <http://www.4shared.com/dir/19807073/7e882875/sharing.html>

Email: KumoWarriors@gamil.com