

60-15-5

Glen Eagles

Logistics:

1. Scalper Signals
2. Daily Fib/Pivots

Setup:

1. Wait for Signal Arrow on 60M chart...it must Close with arrow intact
2. Draw a Vertical Line through that Candle
3. Switch to 15M chart
4. Draw Break out lines from the Top (wick) and Bottom (wick) of the Vertical Line Candle
5. Switch to 5M chart
6. Set an audible alert a few pips above the break out line
7. Enter once PA breaks through and CLOSES above/below the break line
8. Switch back to 60M chart
9. Set S/L at the 60M Signal candle...High/Low (Short/Long)
10. Move S/L to breakeven when you are +?? Amnt of pips
11. Exit on 60M chart...

VISUAL SEQUENCE ATTACHED BELOW



Now switch to 15M Chart

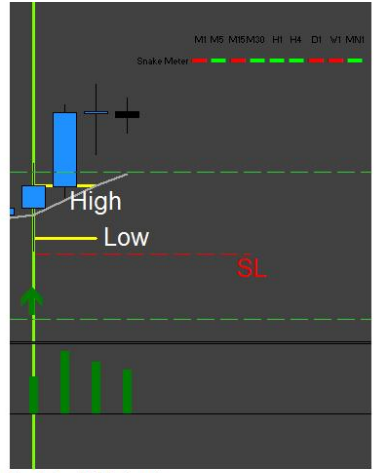


Set an audible alert just above the BREAK LINE

Wait for PA to break and CLOSE above Break line

Enter Trade at close of the obvious candle.

After entry: back to 60M



1. Set S/L @ low of Entry Signal Candle (for a long)
 2. EXIT at WAT color change...
 3. EXIT, whenever you've made money!
 4. This specific trade was +61 at one point...currently +30....
- YOU MAKE THE CALL!**