

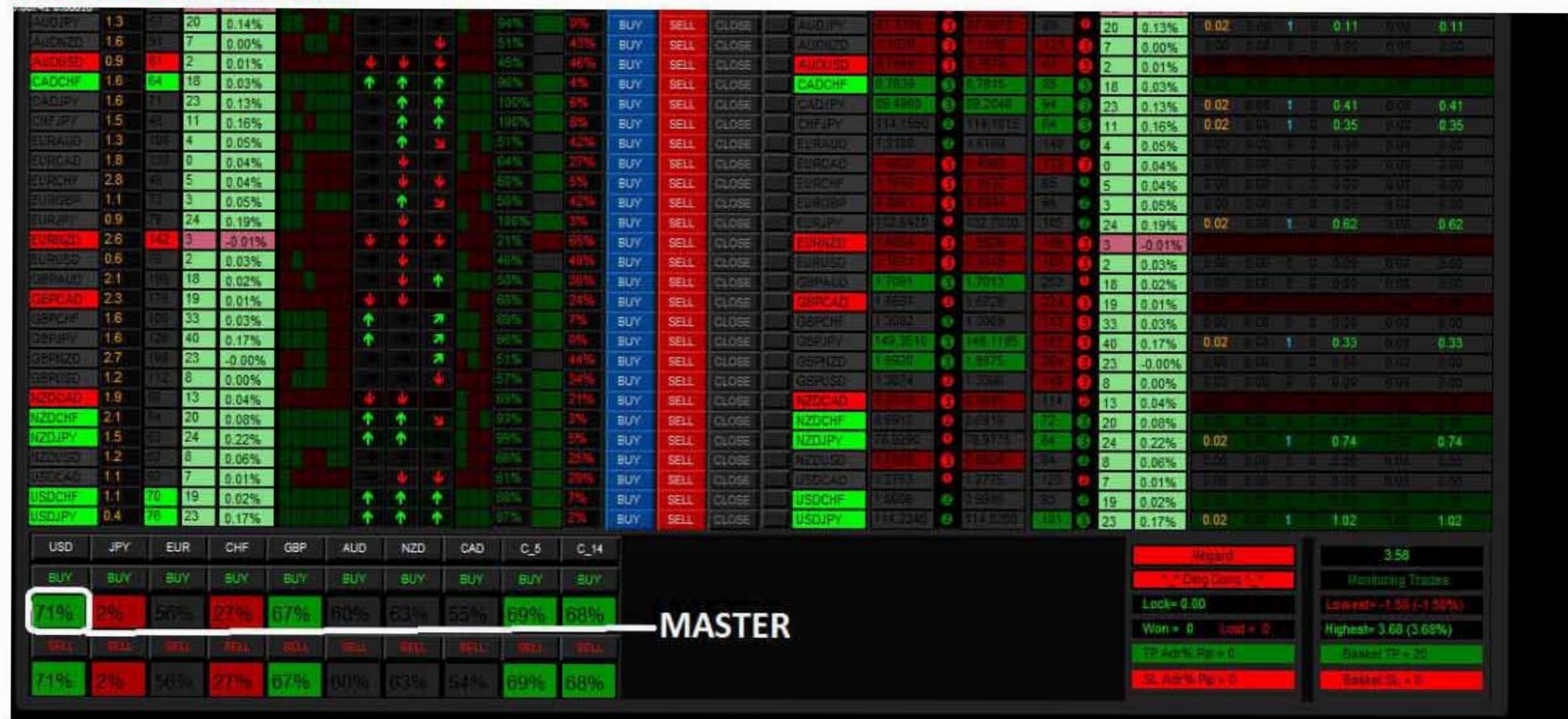
Warning: This manual is for educational purpose. You are purely responsible for your decisions whether they lead you to profit or loss. The opened trades in each of the charts used for illustrations did not necessarily follow the rules explained. Just strictly follow the indicated lines and words in white. You cannot sell this manual. You can only give it out free as gift to help traders still struggling with forex trading.

Thank you.

KNOWLEDGE OF MASTER

Master percentage : 70 and above

MASTER: EXAMPLE 1



MASTER: EXAMPLE 2



MASTER: EXAMPLE 3

Symbol	Spread	Adr	Pip	Ch%	Trend	TS	TL	PA	CLOSE PROFIT	CLOSE ALL	CLOSE LOSS	Price	Daily	Pivot	ADR	Weekly	Ch%	Lots	Orders	Profit	
B	S	B	S	B	S																
AUDCAD	1.3	08	8	-0.09%		↓	↓	↓	7%	89%	BUY	SELL	CLOSE	AUDCAD	0.9191	0.9191	0.00%	0.02	1	0.46	0.46
AUDCHF	1.1	08	3	-0.04%		↓	↓	↓	15%	89%	BUY	SELL	CLOSE	AUDCHF	0.7695	0.7695	0.15%	0.00	0.00	0.00	0.00
AUDJPY	0.8	08	12	0.13%		↓	↓	↓	52%	44%	BUY	SELL	CLOSE	AUDJPY	87.5580	87.4190	0.34%	0.00	0.00	0.00	0.00
AUDNZD	0.8	08	14	0.08%		↓	↓	↓	51%	47%	BUY	SELL	CLOSE	AUDNZD	1.1270	1.1200	0.08%	0.00	0.00	0.00	0.00
CADCHF	1.5	04	5	0.06%		↑	↑	↑	67%	1%	BUY	SELL	CLOSE	CADCHF	0.7854	0.7854	0.22%	0.00	0.02	1.56	1.56
CADJPY	1.3	04	20	0.22%		↑	↑	↑	92%	4%	BUY	SELL	CLOSE	CADJPY	88.1010	88.5180	0.43%	0.04	2	1.06	1.06
CHFJPY	1.4	03	22	0.19%		↑	↑	↑	86%	9%	BUY	SELL	CLOSE	CHFJPY	114.7590	114.8810	0.20%	0.00	0.00	0.00	0.00
EURAUD	0.3	03	25	0.16%		↓	↓	↓	94%	3%	BUY	SELL	CLOSE	EURAUD	1.5117	1.5144	-0.37%	0.00	0.00	0.00	0.00
EURCAD	1.7	03	10	0.07%		↓	↓	↓	51%	42%	BUY	SELL	CLOSE	EURCAD	0.8200	0.8200	-0.40%	0.00	0.00	0.00	0.00
EURCHF	1.8	03	8	0.08%		↓	↓	↓	77%	9%	BUY	SELL	CLOSE	EURCHF	0.8500	0.8500	-0.21%	0.00	0.00	0.00	0.00
EURGBP	1.1	03	5	0.05%		↓	↓	↓	86%	24%	BUY	SELL	CLOSE	EURGBP	1.0000	1.0000	-0.66%	0.00	0.00	0.00	0.00
EURJPY	0.9	03	38	0.27%		↑	↑	↑	90%	9%	BUY	SELL	CLOSE	EURJPY	122.5680	122.5560	-0.03%	0.00	0.00	0.00	0.00
EURNZD	2.2	03	34	0.21%		↓	↓	↓	83%	1%	BUY	SELL	CLOSE	EURNZD	1.0740	1.0740	-0.34%	0.00	0.00	0.00	0.00
EURUSD	0.5	03	13	-0.11%		↓	↓	↓	7%	94%	BUY	SELL	CLOSE	EURUSD	1.1997	1.1997	-0.10%	0.00	0.00	0.00	0.00
GBPAUD	1.8	03	21	0.12%		↑	↑	↑	77%	19%	BUY	SELL	CLOSE	GBPAUD	1.7145	1.7145	0.32%	0.02	1	0.40	0.40
GBPCAD	2.3	03	15	0.01%		↓	↓	↓	24%	69%	BUY	SELL	CLOSE	GBPCAD	1.6737	1.6737	0.29%	0.00	0.00	0.00	0.00
GBPCHF	1.7	03	7	0.05%		↓	↓	↓	13%	39%	BUY	SELL	CLOSE	GBPCHF	1.3145	1.3145	0.50%	0.00	0.00	0.00	0.00
GBPJPY	1.5	03	40	0.27%		↑	↑	↑	81%	16%	BUY	SELL	CLOSE	GBPJPY	150.1100	149.6250	0.68%	0.00	0.00	0.00	0.00
GBPNZD	3.7	03	32	0.17%		↑	↑	↑	72%	22%	BUY	SELL	CLOSE	GBPNZD	1.8950	1.8950	0.38%	0.00	0.00	0.00	0.00
GBPUSD	0.9	02	19	0.15%		↑	↑	↑	16%	82%	BUY	SELL	CLOSE	GBPUSD	1.3151	1.3151	0.59%	0.00	0.00	0.00	0.00
NZDCAD	1.9	07	8	-0.13%		↓	↓	↓	14%	81%	BUY	SELL	CLOSE	NZDCAD	0.8810	0.8810	-0.06%	0.00	0.00	0.00	0.00
NZDCHF	1.8	03	3	-0.07%		↑	↑	↑	22%	79%	BUY	SELL	CLOSE	NZDCHF	0.8500	0.8500	0.17%	0.00	0.00	0.00	0.00
NZDJPY	1.4	03	11	0.11%		↑	↑	↑	67%	96%	BUY	SELL	CLOSE	NZDJPY	99.0000	99.0000	0.35%	0.00	0.00	0.00	0.00
NZDUSD	0.9	03	19	-0.29%		↑	↑	↑	6%	89%	BUY	SELL	CLOSE	NZDUSD	1.6204	1.6204	0.27%	0.00	0.00	0.00	0.00
USDCAD	1.1	04	21	0.10%		↓	↓	↓	95%	9%	BUY	SELL	CLOSE	USDCAD	1.3743	1.3743	-0.30%	0.00	0.00	0.00	0.00
USDCHE	1.1	04	22	0.22%		↑	↑	↑	90%	1%	BUY	SELL	CLOSE	USDCHE	0.8584	0.8584	-0.10%	0.00	0.00	0.00	0.00
USDJPY	0.4	03	45	0.40%		↑	↑	↑	97%	3%	BUY	SELL	CLOSE	USDJPY	114.1410	114.2150	0.08%	0.00	0.00	0.00	0.00

Report

1 - Long Dong - 1

Lock = 0.00

Won = 0 Lost = 0

TP Add% Pip = 10

SL Add% Pip = 10

2.66

Monitoring Trades

Lowest = -38.11 (-26.34%)

Highest = 3.36 (3.51%)

TP Add% Pip = 10

SL Add% Pip = 10

MASTERS

KNOWLEDGE OF SLAVE

Slave percentage : 30 and below

SLAVE: EXAMPLE 1

Symbol	Spread	Adr	Pip	Ch%	Trend	TS	TL	PA	CLOSE PROFIT	CLOSE ALL	CLOSE LOSS	Price	Pivot	ADR	Pip	Ch%	B	S	B	S	B	S	
AUDCAD	1.2	08	14	0.10%		↑	↓	↓	89%	95%	BUY	SELL	CLOSE	AUDCAD	0.9191	0.9191	0.10%	0.00	0.00	0.00	0.00	0.00	0.00
AUDCHF	1.2	08	37	0.27%		↑	↓	↓	97%	1%	BUY	SELL	CLOSE	AUDCHF	0.7695	0.7695	0.27%	0.00	0.00	0.00	0.00	0.00	0.00
AUDJPY	0.8	08	26	0.21%		↑	↓	↓	95%	43%	BUY	SELL	CLOSE	AUDJPY	87.4450	87.6970	0.21%	0.00	0.00	0.00	0.00	0.00	0.00
AUDNZD	0.9	08	50	0.39%		↑	↓	↓	81%	18%	BUY	SELL	CLOSE	AUDNZD	1.1113	1.1100	0.39%	0.00	0.00	0.00	0.00	0.00	0.00
AUDUSD	0.6	08	34	0.20%		↑	↓	↓	96%	2%	BUY	SELL	CLOSE	AUDUSD	0.7854	0.7854	0.20%	0.00	0.00	0.00	0.00	0.00	0.00
CADCHF	1.2	04	34	0.23%		↑	↑	↑	92%	5%	BUY	SELL	CLOSE	CADCHF	0.7854	0.7854	0.23%	0.00	0.00	0.00	0.00	0.00	0.00
CADJPY	1.1	04	22	0.13%		↑	↑	↑	48%	55%	BUY	SELL	CLOSE	CADJPY	88.4930	88.2040	0.13%	0.00	0.00	0.00	0.00	0.00	0.00
GBPJPY	1.1	08	13	-0.04%		↓	↓	↓	11%	87%	BUY	SELL	CLOSE	GBPJPY	151.3300	151.0010	-0.04%	0.00	0.00	0.00	0.00	0.00	0.00
GBPAUD	1.1	08	48	-0.30%		↓	↓	↓	3%	99%	BUY	SELL	CLOSE	GBPAUD	1.7145	1.7145	-0.30%	0.02	1	1.97	1.97	1.97	1.97
GBPCAD	1.1	08	39	-0.22%		↓	↓	↓	4%	99%	BUY	SELL	CLOSE	GBPCAD	1.6737	1.6737	-0.22%	0.02	1	1.61	1.61	1.61	1.61
GBPCHE	2.4	03	2	-0.02%		↓	↓	↓	4%	87%	BUY	SELL	CLOSE	GBPCHE	1.3145	1.3145	-0.02%	0.00	0.00	0.00	0.00	0.00	0.00
GBPNZD	0.8	03	30	-0.33%		↓	↓	↓	15%	83%	BUY	SELL	CLOSE	GBPNZD	1.8945	1.8945	-0.33%	0.00	0.00	0.00	0.00	0.00	0.00
GBPUSD	0.6	03	11	-0.08%		↓	↓	↓	5%	96%	BUY	SELL	CLOSE	GBPUSD	1.3151	1.3151	-0.08%	0.02	1	0.33	0.33	0.33	0.33
EURNZD	1.5	04	12	0.05%		↓	↓	↓	16%	82%	BUY	SELL	CLOSE	EURNZD	1.6810	1.6829	0.12%	0.00	0.02	1	2.14	2.14	2.14
EURUSD	0.4	04	78	-0.13%		↓	↓	↓	15%	31%	BUY	SELL	CLOSE	EURUSD	1.0740	1.0740	-0.13%	0.02	1	1.60	1.60	1.60	1.60
GBPAUD	1.6	08	25	0.05%		↑	↑	↑	35%	84%	BUY	SELL	CLOSE	GBPAUD	1.7090	1.7090	0.05%	0.00	0.00	0.00	0.00	0.00	0.00
GBPCAD	1.8	08	38	0.13%		↑	↑	↑	50%	47%	BUY	SELL	CLOSE	GBPCAD	1.6700	1.6729	0.13%	0.00	0.00	0.00	0.00	0.00	0.00
GBPCHE	1.7	08	74	0.34%		↑	↑	↑	76%	28%	BUY	SELL	CLOSE	GBPCHE	1.3133	1.3100	0.34%	0.00	0.00	0.00	0.00	0.00	0.00
GBPJPY	1.0	08	56	0.28%		↑	↑	↑	62%	37%	BUY	SELL	CLOSE	GBPJPY	149.5190	149.1100	0.29%	0.00	0.00	0.00	0.00	0.00	0.00
GBPNZD	1.9	08	104	0.43%		↑	↑	↑	72%	27%	BUY	SELL	CLOSE	GBPNZD	1.9002	1.8975	0.43%	0.00	0.00	0.00	0.00	0.00	0.00
GBPUSD	0.9	08	37	0.22%		↑	↑	↑	68%	53%	BUY	SELL	CLOSE	GBPUSD	1.3151	1.3151	0.22%	0.00	0.00	0.00	0.00	0.00	0.00
NZDCAD	1.1	08	14	-0.27%		↓	↓	↓	73%	59%	BUY	SELL	CLOSE	NZDCAD	0.8810	0.8810	-0.27%	0.00	0.00	0.00	0.00	0.00	0.00
NZDCHF	1.3	04	12	-0.03%		↑	↓	↓	66%	29%	BUY	SELL	CLOSE	NZDCHF	0.8500	0.8500	-0.03%	0.00	0.00	0.00	0.00	0.00	0.00
NZDJPY	1.1	03	1	-0.09%		↑	↓	↓	17%	61%	BUY	SELL	CLOSE	NZDJPY	99.0000	99.0000	-0.09%	0.00	0.00	0.00	0.00	0.00	0.00
NZDUSD	0.8	03	6	-0.15%		↑	↓	↓	52%	46%	BUY	SELL	CLOSE	NZDUSD	1.6224	1.6224	-0.15%	0.00	0.00	0.00	0.00	0.00	0.00
USDCAD	0.8	03	7	-0.10%		↓	↓	↓	22%	78%	BUY	SELL	CLOSE	USDCAD	1.3750	1.3750	-0.10%	0.00	0.00	0.00	0.00	0.00	0.00
USDCHE	0.9	08	29	0.12%		↑	↑	↑	69%	29%	BUY	SELL	CLOSE	USDCHE	1.0010	1.0010	0.12%	0.00	0.00	0.00	0.00	0.00	0.00
USDJPY	0.4	03	76	0.06%		↑	↑	↑	20%	80%	BUY	SELL	CLOSE	USDJPY	114.1000	114.0200	0.06%	0.00	0.00	0.00	0.00	0.00	0.00

Report

1 - Long Dong - 1

Lock = 0.00

Won = 0 Lost = 0

TP Add% Pip = 5

SL Add% Pip = 5

6.99

Monitoring Trades

Lowest = -7.26 (-7.22%)

Highest = 14.12 (14.05%)

TP Add% Pip = 5

SL Add% Pip = 5

SLAVES

SLAVE: EXAMPLE 2

Symbol	Spread	Adr	Pip	Ch%	Trend	TS	TL	PA	CLOSE PROFIT	CLOSE ALL	CLOSE LOSS	Price	Daily	Pivot	ADR	Weekly	Pip	Ch%	Lots	Orders	Profit				
																			B	S	B	S			
AUDCAD	1.3	55	8	-0.09%					7%	89%	BUY	SELL	CLOSE	AUDCAD	0.8763	0.8763	4	0.00%	0.02	1	0.46	0.46			
AUDCHF	1.1	40	3	-0.04%					15%	80%	BUY	SELL	CLOSE	AUDCHF	0.7658	0.7657	28	0.15%	0.00	0.00	0.00	0.00			
AUDJPY	0.8	58	12	0.13%					53%	44%	BUY	SELL	CLOSE	AUDJPY	97.5502	97.4150	37	0.34%	0.00	0.00	0.00	0.00			
AUDNZD	0.8	58	14	0.08%					51%	47%	BUY	SELL	CLOSE	AUDNZD	1.1079	1.1062	16	0.08%	0.00	0.00	0.00	0.00			
AUDUSD	0.8	57	19	-0.25%					4%	94%	BUY	SELL	CLOSE	AUDUSD	0.7871	0.7866	18	0.30%	0.00	0.02	1	0.00	1.56	1.56	
CADCHF	1.5	54	5	0.06%					87%	1%	BUY	SELL	CLOSE	CADCHF	0.7854	0.7839	72	0.22%							
CADJPY	1.3	64	20	0.22%					92%	4%	BUY	SELL	CLOSE	CADJPY	98.7018	98.5190	55	0.36%	0.04	2	1.06	1.06			
CHFJPY	1.4	52	22	0.19%					85%	9%	BUY	SELL	CLOSE	CHFJPY	114.1992	114.1105	76	0.15%	0.00	0.00	0.00	0.00	0.00	0.00	
EURAUD	0.7	101	25	0.16%					94%	3%	BUY	SELL	CLOSE	EURAUD	1.5117	1.5144	69	-0.37%	0.00	0.00	0.00	0.00	0.00	0.00	
EURCAD	1.7	114	10	0.07%					51%	42%	BUY	SELL	CLOSE	EURCAD	0.8765	0.8763	65	-0.40%							
EURCHF	1.8	52	8	0.08%					77%	6%	BUY	SELL	CLOSE	EURCHF	0.7658	0.7657	24	-0.21%	0.00	0.00	0.00	0.00	0.00	0.00	
EURGBP	1.1	62	5	0.05%					68%	24%	BUY	SELL	CLOSE	EURGBP	0.8765	0.8763	88	-0.86%	0.00	0.00	0.00	0.00	0.00	0.00	
EURJPY	0.7	121	38	0.27%					90%	6%	BUY	SELL	CLOSE	EURJPY	132.3662	132.5563	125	0.14%	0.00	0.00	0.00	0.00	0.00	0.00	
EURNZD	2.2	101	34	0.21%					83%	14%	BUY	SELL	CLOSE	EURNZD	1.6748	1.6769	53	-0.34%	0.00	0.00	0.00	0.00	0.00	0.00	
EURUSD	0.5	63	13	-0.11%					71%	34%	BUY	SELL	CLOSE	EURUSD	1.1597	1.1602	54	-0.10%	0.00	0.00	0.00	0.00	0.00	0.00	
GBPAUD	1.8	122	21	0.12%					77%	18%	BUY	SELL	CLOSE	GBPAUD	1.7143	1.7180	39	0.32%	0.02	0.00	1	0.42	0.00	0.42	
GBPCAD	2.3	155	11	0.01%					24%	68%	BUY	SELL	CLOSE	GBPCAD	0.8733	0.8716	22	0.29%							
GBPCHE	1.7	114	7	0.05%					13%	38%	BUY	SELL	CLOSE	GBPCHE	1.3142	1.3097	151	0.50%	0.00	0.00	0.00	0.00	0.00	0.00	
GBPJPY	1.5	122	40	0.27%					81%	16%	BUY	SELL	CLOSE	GBPJPY	150.1185	149.4250	170	0.68%	0.00	0.00	0.00	0.00	0.00	0.00	
GBPNZD	3.7	159	32	0.17%					72%	23%	BUY	SELL	CLOSE	GBPNZD	1.8978	1.8978	285	0.38%	0.00	0.00	0.00	0.00	0.00	0.00	
GBPUSE	0.9	120	19	0.15%					16%	82%	BUY	SELL	CLOSE	GBPUSE	1.1151	1.1116	150	0.59%	0.00	0.00	0.00	0.00	0.00	0.00	
USD CAD	1.9	79	6	-0.13%					14%	81%	BUY	SELL	CLOSE	USD CAD	0.8910	0.8916	108	-0.06%	0.00	0.00	0.00	0.00	0.00	0.00	
USDCHF	1.8	52	3	-0.07%					22%	79%	BUY	SELL	CLOSE	USDCHF	0.8920	0.8915	77	0.17%	0.00	0.00	0.00	0.00	0.00	0.00	
USDJPY	1.4	88	11	0.11%					87%	36%	BUY	SELL	CLOSE	USDJPY	114.0200	114.0700	38	0.35%							
USDNZD	0.9	73	19	-0.29%					8%	89%	BUY	SELL	CLOSE	USDNZD	0.8732	0.8732	17	0.27%	0.00	0.00	0.00	0.00	0.00	0.00	
USDCAD	1.1	85	21	0.16%					95%	0%	BUY	SELL	CLOSE	USDCAD	1.2724	1.2731	33	-0.30%	0.00	0.00	0.00	0.00	0.00	0.00	
USDCHE	1.1	85	22	0.22%					86%	1%	BUY	SELL	CLOSE	USDCHE	0.8954	0.8950	57	-0.10%	0.00	0.00	0.00	0.00	0.00	0.00	
USDJPY	0.4	88	45	0.40%					97%	3%	BUY	SELL	CLOSE	USDJPY	114.1415	114.2355	113	0.08%							
																						Report		2.66	
																						Lock = 0.00		Monitoring Trades	
																						Won = 0 Lost = 0		Lowest= -38.11 (-29.34%)	
																						TP ADR Pip = 10		Highest= 3.36 (3.51%)	
																						SL ADR Pip = 20		Buy Sell	

KNOWLEDGE OF REAL MASTER

Both RECTANGLES must have percentage 70 and above.

REAL MASTER: EXAMPLE 1

	Spread	Adr	Pip	Ch%	Trend	TS	TL	PA	CLOSE PROFIT	CLOSE ALL	CLOSE LOSS	Price	Pivot	ADR	Pip	Ch%	B	S	B	S	B	S		
AUDCAD	1.2	78	14	0.10%					88%	35%	BUY	SELL	CLOSE	AUDCAD	0.8770	0.8763	14	0.10%	0.00	0.00	0	0	0.00	0.00
AUDCHF	1.2	58	37	0.27%					97%	1%	BUY	SELL	CLOSE	AUDCHF	0.7875	0.7878	74	0.27%	0.00	0.00	0	0	0.00	0.00
AUDJPY	0.8	57	26	0.21%					55%	43%	BUY	SELL	CLOSE	AUDJPY	97.4420	97.5070	89	0.21%	0.00	0.00	0	0	0.00	0.00
AUDNZD	0.8	57	50	0.39%					81%	18%	BUY	SELL	CLOSE	AUDNZD	1.1113	1.1106	121	0.39%	0.00	0.00	0	0	0.00	0.00
AUDUSD	0.6	51	17	0.20%					96%	2%	BUY	SELL	CLOSE	AUDUSD	0.7863	0.7878	61	0.20%	0.00	0.00	0	0	0.00	0.00
CADCHF	1.2	64	34	0.23%					92%	5%	BUY	SELL	CLOSE	CADCHF	0.7855	0.7815	85	0.23%						
CADJPY	1.1	61	22	0.13%					46%	53%	BUY	SELL	CLOSE	CADJPY	98.4930	98.2040	91	0.13%						
CHFJPY	1.1	48	13	-0.04%					11%	87%	BUY	SELL	CLOSE	CHFJPY	114.0420	114.0011	64	-0.04%						
EURAUD	1.1	101	48	-0.30%					2%	95%	BUY	SELL	CLOSE	EURAUD	1.5122	1.5100	149	-0.30%	0.02	0	1	1.97	1.97	
EURCAD	1.1	101	39	-0.22%					4%	95%	BUY	SELL	CLOSE	EURCAD	1.4763	1.4762	312	-0.22%	0.02	0	1	1.61	1.61	
EURCHF	2.4	114	2	-0.02%					4%	95%	BUY	SELL	CLOSE	EURCHF	1.3097	1.3097	65	-0.02%	0.00	0.00	0	0	0.00	0.00
EURGBP	0.8	101	30	-0.33%					15%	83%	BUY	SELL	CLOSE	EURGBP	0.8741	0.8740	185	-0.33%	0.00	0.00	0	0	0.00	0.00
EURJPY	0.6	78	11	-0.08%					5%	95%	BUY	SELL	CLOSE	EURJPY	132.3662	132.3700	105	-0.08%	0.02	0	1	0.33	0.33	
EURNZD	1.5	142	12	0.05%					16%	82%	BUY	SELL	CLOSE	EURNZD	1.6813	1.6829	82	0.05%	0.00	0.02	1	0.00	2.14	2.14
EURUSD	0.4	78	20	-0.13%					15%	81%	BUY	SELL	CLOSE	EURUSD	1.1598	1.1595	110	-0.13%	0.02	0	1	1.60	1.60	
GBPAUD	1.6	124	25	0.05%					38%	51%	BUY	SELL	CLOSE	GBPAUD	1.7098	1.7015	113	0.05%	0.00	0.00	0	0	0.00	0.00
GBPCAD	1.8	178	38	0.13%					50%	44%	BUY	SELL	CLOSE	GBPCAD	1.6706	1.6725	214	0.13%	0.00	0.00	0	0	0.00	0.00
GBPCHE	1.7	114	74	0.14%					79%	34%	BUY	SELL	CLOSE	GBPCHE	1.3123	1.3099	143	0.34%	0.00	0.00	0	0	0.00	0.00
GBPJPY	1.0	122	58	0.28%					62%	37%	BUY	SELL	CLOSE	GBPJPY	149.5129	149.1155	167	0.29%	0.00	0.00	0	0	0.00	0.00
GBPNZD	1.9	152	104	0.43%					72%	27%	BUY	SELL	CLOSE	GBPNZD	1.8902	1.8875	264	0.43%	0.00	0.00	0	0	0.00	0.00
GBPUSE	0.9	122	37	0.22%					66%	33%	BUY	SELL	CLOSE	GBPUSE	1.1163	1.1098	119	0.22%	0.00	0.00	0	0	0.00	0.00
USDCAD	1.1	88	14	-0.27%					73%	68%	BUY	SELL	CLOSE	USDCAD	0.8781	0.8805	81	-0.27%	0.00	0.00	0	0	0.00	0.00
USDCHF	1.3	54	12	-0.03%					66%	29%	BUY	SELL	CLOSE	USDCHF	0.8925	0.8918	72	-0.03%	0.00	0.00	0	0	0.00	0.00
USDJPY	1.1	88	1	-0.09%					17%	81%	BUY	SELL	CLOSE	USDJPY	114.0220	114.0220	84	-0.09%	0.00	0.00	0	0	0.00	0.00
USDNZD	0.8	88	6	-0.15%					52%	48%	BUY	SELL	CLOSE	USDNZD	0.8806	0.8806	84	-0.15%	0.00	0.00	0	0	0.00	0.00
USDCAD	0.8	82	7	-0.10%					22%	78%	BUY	SELL	CLOSE	USDCAD	1.2750	1.2775	32	-0.10%						
USDCHE	0.9	78	29	0.12%					59%	39%	BUY	SELL	CLOSE	USDCHE	1.0016	0.9990	93	0.29						
USDJPY	0.4	78	11	0.06%					22%	80%	BUY	SELL	CLOSE	USDJPY	114.0420	114.0244	101	0.06%	0.00	0.00	0	0	0.00	0.00

USDJPY

EURCHF

GBPUSD

USDCAD

EURJPY

GBPCHF

EURAUD

USDCHE

GBPNZD

EURNZD

USDGBP

GBPCAD

EURGBP

USDCHF

GBPAUD

EURCAD

USDJPY

GBPCHE

EURUSD

USDNZD

GBPNZD

EURCHF

USDGBP

GBPCAD

EURGBP

USDCHF

GBPAUD

EURCAD

USDJPY

GBPCHE

EURUSD

USDNZD

GBPNZD

EURCHF

USDGBP

GBPCAD

EURGBP

USDCHF

GBPAUD

EURCAD

USDJPY

GBPCHE

EURUSD

USDNZD

GBPNZD

EURCHF

USDGBP

GBPCAD

EURGBP

USDCHF

GBPAUD

EURCAD

USDJPY

GBPCHE

EURUSD

USDNZD

GBPNZD

EURCHF

USDGBP

GBPCAD

EURGBP

USDCHF

GBPAUD

EURCAD

USDJPY

GBPCHE

EURUSD

USDNZD

GBPNZD

EURCHF

USDGBP

GBPCAD

EURGBP

USDCHF

GBPAUD

EURCAD

USDJPY

GBPCHE

EURUSD

USDNZD

GBPNZD

EURCHF

USDGBP

GBPCAD

EURGBP

USDCHF

GBPAUD

EURCAD

USDJPY

GBPCHE

EURUSD

USDNZD

GBPNZD

EURCHF

USDGBP

GBPCAD

EURGBP

USDCHF

GBPAUD

EURCAD

USDJPY

GBPCHE

EURUSD

USDNZD

GBPNZD

EURCHF

USDGBP

GBPCAD

EURGBP

USDCHF

GBPAUD

EURCAD

USDJPY

GBPCHE

EURUSD

USDNZD

GBPNZD

EURCHF

USDGBP

GBPCAD

EURGBP

USDCHF

GBPAUD

EURCAD

USDJPY

GBPCHE

EURUSD

USDNZD

GBPNZD

EURCHF

USDGBP

GBPCAD

EURGBP

USDCHF

GBPAUD

EURCAD

USDJPY

GBPCHE

EURUSD

USDNZD

GBPNZD

EURCHF

USDGBP

GBPCAD

EURGBP

USDCHF

GBPAUD

EURCAD

USDJPY

GBPCHE

EURUSD

USDNZD

GBPNZD

EURCHF

USDGBP

GBPCAD

EURGBP

USDCHF

GBPAUD

EURCAD

USDJPY

GBPCHE

EURUSD

USDNZD

GBPNZD

EURCHF

USDGBP

GBPCAD

EURGBP

USDCHF

GBPAUD

EURCAD

USDJPY

GBPCHE

EURUSD

USDNZD

GBPNZD

EURCHF

USDGBP

GBPCAD

EURGBP

USDCHF

GBPAUD

EURCAD

USDJPY

GBPCHE

EURUSD

USDNZD

GBPNZD

EURCHF

USDGBP

GBPCAD

EURGBP

USDCHF

GBPAUD

EURCAD

USDJPY

GBPCHE

EURUSD

USDNZD

GBPNZD

EURCHF

USDGBP

GBPCAD

EURGBP

USDCHF

GBPAUD

EURCAD

USDJPY

GBPCHE

EURUSD

USDNZD

GBPNZD

EURCHF

USDGBP

GBPCAD

EURGBP

USDCHF

GBPAUD

EURCAD

USDJPY

GBPCHE

EURUSD

USDNZD

GBPNZD

EURCHF

USDGBP

GBPCAD

EURGBP

USDCHF

GBPAUD

EURCAD

USDJPY

GBPCHE

EURUSD

USDNZD

GBPNZD

EURCHF

USDGBP

GBPCAD

EURGBP

USDCHF

GBPAUD

EURCAD

USDJPY

GBPCHE

EURUSD

USDNZD

GBPNZD

EURCHF

USDGBP

GBPCAD

EURGBP

USDCHF

GBPAUD

EURCAD

USDJPY

GBPCHE

EURUSD

USDNZD

GBPNZD

EURCHF

USDGBP

GBPCAD

EURGBP

USDCHF

GBPAUD

EURCAD

USDJPY

GBPCHE

EURUSD

USDNZD

GBPNZD

EURCHF

USDGBP

GBPCAD

EURGBP

USDCHF

GBPAUD

EURCAD

USDJPY

GBPCHE

EURUSD

USDNZD

GBPNZD

EURCHF

USDGBP

GBPCAD

EURGBP

USDCHF

GBPAUD

EURCAD

USDJPY

GBPCHE

EURUSD

USDNZD

GBPNZD

EURCHF

USDGBP

GBPCAD

EURGBP

USDCHF

GBPAUD

EURCAD

USDJPY

GBPCHE

EURUSD

USDNZD

GBPNZD

EURCHF

USDGBP

GBPCAD

EURGBP

USDCHF

GBPAUD

EURCAD

USDJPY

GBPCHE

EURUSD

USDNZD

GBPNZD

EURCHF

USDGBP

GBPCAD

EURGBP

USDCHF

GBPAUD

EURCAD

USDJPY

GBPCHE

EURUSD

USDNZD

GBPNZD

EURCHF

USDGBP

GBPCAD

EURGBP

USDCHF

GBPAUD

EURCAD

USDJPY

GBPCHE

EURUSD

USDNZD

GBPNZD

EURCHF

USDGBP

GBPCAD

EURGBP

USDCHF

GBPAUD

EURCAD

USDJPY

GBPCHE

EURUSD

USDNZD

GBPNZD

EURCHF

USDGBP

GBPCAD

EURGBP

USDCHF

GBPAUD

EURCAD

USDJPY

GBPCHE

EURUSD

USDNZD

GBPNZD

EURCHF

USDGBP

GBPCAD

EURGBP

USDCHF

GBPAUD

EURCAD

USDJPY

GBPCHE

EURUSD

USDNZD

GBPNZD

EURCHF

USDGBP

GBPCAD

EURGBP

USDCHF

GBPAUD

EURCAD

USDJPY

GBPCHE

EURUSD

USDNZD

GBPNZD

EURCHF

USDGBP

GBPCAD

EURGBP

USDCHF

GBPAUD

EURCAD

USDJPY

GBPCHE

EURUSD

USDNZD

GBPNZD

EURCHF

USDGBP

GBPCAD

EURGBP

USDCHF

GBPAUD

EURCAD

USDJPY

GBPCHE

EURUSD

USDNZD

GBPNZD

EURCHF

USDGBP

GBPCAD

EURGBP

USDCHF

GBPAUD

EURCAD

USDJPY

GBPCHE

EURUSD

USDNZD

GBPNZD

EURCHF

USDGBP

GBPCAD

EURGBP

USDCHF

GBPAUD

EURCAD

USDJPY

GBPCHE

EURUSD

USDNZD

GBPNZD

EURCHF

USDGBP

GB

REAL MASTER: EXAMPLE 2

Symbol	Spread	Adr	Pip	Ch%	Trend	TS	TL	PA	CLOSE PROFIT	CLOSE ALL	CLOSE LOSS	Price	Daily	Pivot	ADR	Weekly	Pip	Ch%	Lots	Orders	Profit	S			
AUDCAD	1.3	58	8	-0.09%					7%	69%	BUY	SELL	CLOSE	AUDCAD	0.7665	0.7665	85	4	0.00%	0.02	1	0.46	0.46		
AUDCHF	1.1	48	3	-0.04%					15%	60%	BUY	SELL	CLOSE	AUDCHF	0.7665	0.7665	85	28	0.15%	0.00	0	0.00	0.00		
AUDJPY	0.8	58	12	0.13%					53%	44%	BUY	SELL	CLOSE	AUDJPY	117.5505	117.5505	77	38	0.34%	0.00	0	0.00	0.00		
AUNZD	0.8	50	14	0.08%					51%	47%	BUY	SELL	CLOSE	AUNZD	1.1670	1.1670	102	16	0.08%	0.00	0	0.00	0.00		
AUSUSD	0.8	51	19	-0.25%					4%	94%	BUY	SELL	CLOSE	AUSUSD	0.7671	0.7671	86	24	0.30%	0.00	0.02	1	0.90	1.56	1.56
CADCHF	1.5	54	5	0.06%					87%	1%	BUY	SELL	CLOSE	CADCHF	0.7754	0.7754	72	33	0.22%	0.00	0	0	0	0	0
CADJPY	1.3	64	20	0.22%					92%	4%	BUY	SELL	CLOSE	CADJPY	127.010	127.010	85	43	0.36%	0.04	2	1.06	1.06	1.06	1.06
CHFJPY	1.4	50	22	0.19%					65%	9%	BUY	SELL	CLOSE	CHFJPY	114.155	114.155	78	15	0.20%	0.00	0	0	0	0	0
EURAUD	0.7	103	25	0.16%					94%	3%	BUY	SELL	CLOSE	EURAUD	1.5117	1.5117	144	59	-0.37%	0.00	0	0	0	0	0
EURCAD	1.7	53	10	0.07%					51%	42%	BUY	SELL	CLOSE	EURCAD	1.4755	1.4755	144	65	-0.40%	0.00	0	0	0	0	0
EURCHF	1.8	50	8	0.08%					77%	8%	BUY	SELL	CLOSE	EURCHF	1.1805	1.1805	101	24	-0.21%	0.00	0	0	0	0	0
EURGBP	1.1	80	5	0.05%					66%	24%	BUY	SELL	CLOSE	EURGBP	1.2210	1.2210	107	80	-0.86%	0.00	0	0	0	0	0
EURJPY	0.7	101	38	0.27%					80%	8%	BUY	SELL	CLOSE	EURJPY	132.3660	132.3660	123	4	-0.03%	0.00	0	0	0	0	0
EURNZD	2.2	10	34	0.21%					83%	11%	BUY	SELL	CLOSE	EURNZD	1.5748	1.5748	224	53	-0.34%	0.00	0	0	0	0	0
EURUSD	0.5	53	13	-0.11%					71%	9%	BUY	SELL	CLOSE	EURUSD	1.1597	1.1597	144	17	-0.10%	0.00	0	0	0	0	0
GBPAUD	1.8	125	21	0.12%					77%	18%	BUY	SELL	CLOSE	GBPAUD	1.7143	1.7143	205	70	0.32%	0.02	0	0	0.42	0.42	0.42
GBPCAD	2.3	105	1	0.01%					24%	68%	BUY	SELL	CLOSE	GBPCAD	1.6735	1.6735	228	65	0.29%	0.00	0	0	0	0	0
GBPCHF	1.7	114	7	0.05%					23%	39%	BUY	SELL	CLOSE	GBPCHF	1.3143	1.3143	151	94	0.50%	0.00	0	0	0	0	0
GBPJPY	1.5	125	40	0.27%					81%	16%	BUY	SELL	CLOSE	GBPJPY	150.1100	150.1100	170	115	0.68%	0.00	0	0	0	0	0
GBPNZD	3.7	15	32	0.17%					72%	23%	BUY	SELL	CLOSE	GBPNZD	1.8950	1.8950	285	54	0.38%	0.00	0	0	0	0	0
GBPUSD	0.9	120	19	0.15%					16%	62%	BUY	SELL	CLOSE	GBPUSD	1.3151	1.3151	185	85	0.59%	0.00	0	0	0	0	0
NZDCAD	1.9	75	6	-0.13%					14%	81%	BUY	SELL	CLOSE	NZDCAD	0.8510	0.8510	102	4	-0.06%	0.00	0	0	0	0	0
NZDCHF	1.8	58	3	-0.07%					22%	78%	BUY	SELL	CLOSE	NZDCHF	0.8820	0.8820	77	26	0.17%	0.00	0	0	0	0	0
NZDJPY	1.4	58	11	0.11%					57%	36%	BUY	SELL	CLOSE	NZDJPY	116.0280	116.0280	88	34	0.35%	0.00	0	0	0	0	0
NZDUSD	0.9	71	19	-0.29%					8%	89%	BUY	SELL	CLOSE	NZDUSD	0.8504	0.8504	107	23	0.27%	0.00	0	0	0	0	0
USDCAD	1.1	85	21	0.18%					94%	6%	BUY	SELL	CLOSE	USDCAD	1.3734	1.3734	188	33	-0.30%	0.00	0	0	0	0	0
USOCHF	1.1	88	22	0.22%					96%	1%	BUY	SELL	CLOSE	USOCHF	1.3994	1.3994	87	7	-0.10%	0.00	0	0	0	0	0
USDJPY	0.4	88	45	0.40%					97%	3%	BUY	SELL	CLOSE	USDJPY	114.1410	114.1410	110	14	0.08%	0.00	0	0	0	0	0
REAL MASTER																									
USD	JPY	EUR	CHF	GBP	AUD	NZD	CAD	C_5	C_14	Report															
BUY	BUY	BUY	BUY	BUY	BUY	BUY	BUY	BUY	BUY	= "Long Dong" =															
69%	69%	67%	48%	51%	22%	27%	70%	18%	15%	2.66															
SELL	SELL	SELL	SELL	SELL	SELL	SELL	SELL	SELL	SELL	Monitoring Trades															
18%	35%	25%	41%	83%	45%	52%	70%	58%	68%	Lowest= -28.11 (-29.34%)															
										Highest= 3.36 (3.51%)															
										TP Ad% Pip = 10															
										SL Ad% Pip = 20															

KNOWLEDGE OF REAL SLAVE

Both RECTANGLES must have percentage 30 and above.

REAL SLAVE : EXAMPLE 1

Symbol	Spread	Adr	Pip	Ch%	Trend	TS	TL	PA	CLOSE PROFIT	CLOSE ALL	CLOSE LOSS	Price	Pivot	ADR	Pip	Ch%	B	S	B S	B	S
AUDCAD	1.2	79	14	0.10%					85%	35%	BUY	SELL	CLOSE	AUDCAD	0.7670	0.7670	140	14	0.10%	0.00	0.00
AUDCHF	1.2	56	37	0.27%					97%	1%	BUY	SELL	CLOSE	AUDCHF	0.7675	0.7675	74	37	0.27%	0.00	0.00
AUDJPY	0.8	57	26	0.21%					85%	43%	BUY	SELL	CLOSE	AUDJPY	117.4430	117.4430	83	26	0.21%	0.00	0.00
AUNZD	0.9	51	50	0.39%					81%	16%	BUY	SELL	CLOSE	AUNZD	1.1112	1.1112	121	50	0.39%	0.00	0.00
AUSUSD	0.8	51	17	0.20%					86%	2%	BUY	SELL	CLOSE	AUSUSD	0.7663	0.7663	81	17	0.20%	0.00	0.00
CADCHF	1.2	64	34	0.23%					82%	5%	BUY	SELL	CLOSE	CADCHF	0.7855	0.7855	85	34	0.23%	0.00	0.00
CADJPY	1.1	61	22	0.13%					48%	53%	BUY	SELL	CLOSE	CADJPY	118.4930	118.4930	94	22	0.13%	0.00	0.00
CHFJPY	1.1	48	13	-0.04%					11%	87%	BUY	SELL	CLOSE	CHFJPY	113.1020	113.1020	84	13	-0.04%	0.00	0.00
GBPAUD	1.1	105	48	-0.30%					5%	95%	BUY	SELL	CLOSE	GBPAUD	1.7020	1.7020	140	48	-0.30%	0.02	1
GBPCAD	1.1	105	38	-0.22%					6%	96%	BUY	SELL	CLOSE	GBPCAD	1.6760	1.6760	112	39	-0.22%	0.02	1
GBPCHF	2.4	117	2	-0.02%					4%	87%	BUY	SELL	CLOSE	GBPCHF	1.3150	1.3150	85	2	-0.02%	0.00	0.00
GBPJPY	0.8	125	30	-0.33%					13%	83%	BUY	SELL	CLOSE	GBPJPY	152.0020	152.0020	95	30	-0.33%	0.00	0.00
GBPNZD	0.6	78	11	-0.08%					5%	85%	BUY	SELL	CLOSE	GBPNZD	1.8920	1.8920	105	11	-0.08%	0.02	1
EURNZD	1.5	144	12	0.05%					18%	62%	BUY	SELL	CLOSE	EURNZD	1.8813	1.8813	182	12	0.05%	0.00	0.00
EURUSD	0.4	76	20	-0.13%					15%	31%	BUY	SELL	CLOSE	EURUSD	1.1594	1.1594	101	20	-0.13%	0.02	1
GBPAUD	1.6	105	25	0.05%					35%	11%	BUY	SELL	CLOSE	GBPAUD	1.7008	1.7008	253	25	0.05%	0.00	0.00
GBPCAD	1.6	105	38	0.13%					56%	11%	BUY	SELL	CLOSE	GBPCAD	1.6728	1.6728	237	38	0.13%	0.00	0.00
GBPCHF	1.7	108	74	0.11%					78%	26%	BUY	SELL	CLOSE	GBPCHF	1.3123	1.3123	143	74	0.34%	0.00	0.00
GBPJPY	1.0	125	56	0.28%					62%	37%	BUY	SELL	CLOSE	GBPJPY	149.5100	149.5100	167	56	0.29%	0.00	0.00
GBPNZD	1.9	98	104	0.43%					72%	27%	BUY	SELL	CLOSE	GBPNZD	1.9002	1.9002	264	104	0.43%	0.00	0.00
GBPUSD	0.9	115	37	0.22%					68%	33%	BUY	SELL	CLOSE	GBPUSD	1.3185	1.3185	241	37	0.22%	0.00	0.00
NZDCAD	1.1	86	14	-0.27%					71%	69%	BUY	SELL	CLOSE	NZDCAD	0.8503	0.8503	114	14	-0.27%	0.00	0.00
NZDCHF	1.3	84	12	-0.03%					66%	29%	BUY	SELL	CLOSE	NZDCHF	0.8800	0.8800	72	12	-0.03%	0.00	0.00
NZDJPY	1.1	87	1	-0.09%					77%	61%	BUY	SELL	CLOSE	NZDJPY	116.0000	116.0000	84	1	-0.09%	0.00	0.00
NZDUSD	0.8	85	6	-0.15%					62%	46%	BUY	SELL	CLOSE	NZDUSD	0.8505	0.8505	84	6	-0.15%	0.00	0.00
USDCAD	0.8	82	7	-0.10%					22%	76%	BUY	SELL	CLOSE	USDCAD	1.3760	1.3760	1	7	-0.10%	0.00	0.00
USCHF	0.9	80	29	0.12%					59%	28%	BUY	SELL	CLOSE	USCHF	1.0016	1.0016	23	29	0.12%	0.00	0.00
USJPY	0.4	76	11	0.06%					20%	68%	BUY	SELL	CLOSE	USJPY	114.1000	114.0380	101	11	0.06%	0.00	0.00

USD

JPY

EUR

CHF

GBP

AUD

NZD

CAD

C_5

C_14

BUY

BUY

BUY

BUY

BUY

BUY

BUY

BUY

BUY

BUY

69%

69%

9%

29%

64%

79%

35%

68%

37%

38%

SELL

SELL

SELL

SELL

SELL

SELL

SELL

SELL

SELL

SELL

69%

69%

9%

29%

64%

79%

35%

68%

37%

38%

REAL SLAVES

Report

~ 0.000

REAL SLAVE : EXAMPLE 2

Symbol	Spread	Adr	Pip	Ch%	Trend	TS	TL	PA	CLOSE PROFIT	CLOSE ALL	CLOSE LOSS	Price	Daily	Pivot	ADR	Weekly	Pip	Ch%	Lots	Orders	Profit	S
AUDCAD	1.3	31	30	-0.32%		↓	↓	↓	10%	87%	BUY	SELL	CLOSE	AUDCAD	0.7517	0.7516	31	57	0.00	0.00	0.00	0.00
AUDCHF	1.2	30	22	-0.31%		↓	↓	↓	12%	84%	BUY	SELL	CLOSE	AUDCHF	0.7517	0.7516	31	57	0.00	0.00	0.00	0.00
AUDJPY	0.7	32	45	-0.54%		↓	↓	↓	8%	91%	BUY	SELL	CLOSE	AUDJPY	0.7517	0.7516	31	57	0.00	0.00	0.00	0.00
AUDNZD	1.0	30	5	-0.05%		↓	↓	↓	53%	35%	BUY	SELL	CLOSE	AUDNZD	1.1166	1.1165	105	28	0.01	0.00	1	0.00
AUDUSD	0.7	40	10	-0.14%		↓	↓	↓	11%	87%	BUY	SELL	CLOSE	AUDUSD	0.7517	0.7516	31	57	0.00	0.00	0.00	0.00
CADCHF	1.7	50	2	0.02%		↑	↑	↑	57%	29%	BUY	SELL	CLOSE	CADCHF	0.7790	0.7770	212	53	0.00	0.00	0.00	0.00
CADJPY	1.1	31	18	-0.21%		↓	↓	↓	14%	89%	BUY	SELL	CLOSE	CADJPY	0.7517	0.7516	31	57	0.00	0.00	0.00	0.00
CHFJPY	1.8	30	21	-0.19%		↓	↓	↓	15%	80%	BUY	SELL	CLOSE	CHFJPY	0.7517	0.7516	31	57	0.00	0.00	0.00	0.00
EURAUD	0.7	107	72	0.46%		↑	↑	↑	93%	6%	BUY	SELL	CLOSE	EURAUD	1.5562	1.5521	142	351	0.00	0.00	0.00	0.00
EURCAD	1.3	102	21	0.14%		↑	↑	↑	76%	19%	BUY	SELL	CLOSE	EURCAD	1.5013	1.5024	136	246	0.00	0.00	0.00	0.00
EURCHF	1.7	56	15	0.12%		↑	↑	↑	86%	5%	BUY	SELL	CLOSE	EURCHF	1.5112	1.5172	74	104	0.00	0.00	0.00	0.00
EURGBP	0.9	40	6	0.07%		↑	↑	↑	75%	19%	BUY	SELL	CLOSE	EURGBP	0.7517	0.7516	31	57	0.00	0.00	0.00	0.00
EURJPY	0.7	31	10	-0.09%		↑	↑	↑	26%	70%	BUY	SELL	CLOSE	EURJPY	0.7517	0.7516	31	57	0.00	0.00	0.00	0.00
EURNZD	2.6	134	70	0.40%		↑	↑	↑	63%	4%	BUY	SELL	CLOSE	EURNZD	1.7246	1.7185	179	413	0.01	0.00	1	0.00
EURUSD	0.5	31	38	0.32%		↑	↑	↑	74%	26%	BUY	SELL	CLOSE	EURUSD	1.1807	1.1779	84	150	0.00	0.00	0.00	0.00
GBPUSD	0	0	0	0%		↓	↓	↓	0%	0%	BUY	SELL	CLOSE	GBPUSD	0	0	0	0	0.00	0.00	0.00	0.00
GBPGBP	0	0	0	0%		↓	↓	↓	0%	0%	BUY	SELL	CLOSE	GBPGBP	0	0	0	0	0.00	0.00	0.00	0.00
GBPCHF	2.2	108	11	0.08%		↑	↑	↑	40%	46%	BUY	SELL	CLOSE	GBPCHF	0.7517	0.7516	31	57	0.00	0.00	0.00	0.00
GBPJPY	1.3	113	21	-0.16%		↑	↑	↑	19%	79%	BUY	SELL	CLOSE	GBPJPY	0.7517	0.7516	31	57	0.00	0.00	0.00	0.00
GBPNZD	2.7	173	68	0.35%		↑	↑	↑	60%	8%	BUY	SELL	CLOSE	GBPNZD	0.7517	0.7516	31	57	0.01	0.00	1	0.00
GBPUSD	0.9	34	35	0.26%		↑	↑	↑	71%	27%	BUY	SELL	CLOSE	GBPUSD	0.7517	0.7516	31	57	0.00	0.00	0.00	0.00
NZDCAD	1.5	54	20	0.11%		↓	↓	↓	10%	90%	BUY	SELL	CLOSE	NZDCAD	0.7517	0.7516	31	57	0.01	0.00	1	0.00
NZDCHF	1.7	51	14	-0.21%		↓	↓	↓	9%	96%	BUY	SELL	CLOSE	NZDCHF	0.7517	0.7516	31	57	0.01	0.00	1	0.00
NZDJPY	1.4	51	35	-0.47%		↓	↓	↓	7%	90%	BUY	SELL	CLOSE	NZDJPY	0.7517	0.7516	31	57	0.02	0.00	2	0.00
NZDUSD	0.9	33	4	-0.07%		↓	↓	↓	89%	1%	BUY	SELL	CLOSE	NZDUSD	0.7517	0.7516	31	57	0.01	0.00	1	0.00
USDCAD	0.9	30	23	-0.19%		↓	↓	↓	40%	59%	BUY	SELL	CLOSE	USDCAD	0.7517	0.7516	31	57	0.00	0.00	0.00	0.00
USDCHF	1.1	34	18	-0.19%		↓	↓	↓	44%	54%	BUY	SELL	CLOSE	USDCHF	0.7517	0.7516	31	57	0.00	0.00	0.00	0.00
USDJPY	0.4	31	48	-0.42%		↓	↓	↓	22%	76%	BUY	SELL	CLOSE	USDJPY	0.7517	0.7516	31	57	0.00	0.00	0.00	0.00

RULE ONE

The following must be considered to satisfy rule 1.

1. Be at your computer 15 minutes after London Open.
2. Look for Master and Slave.

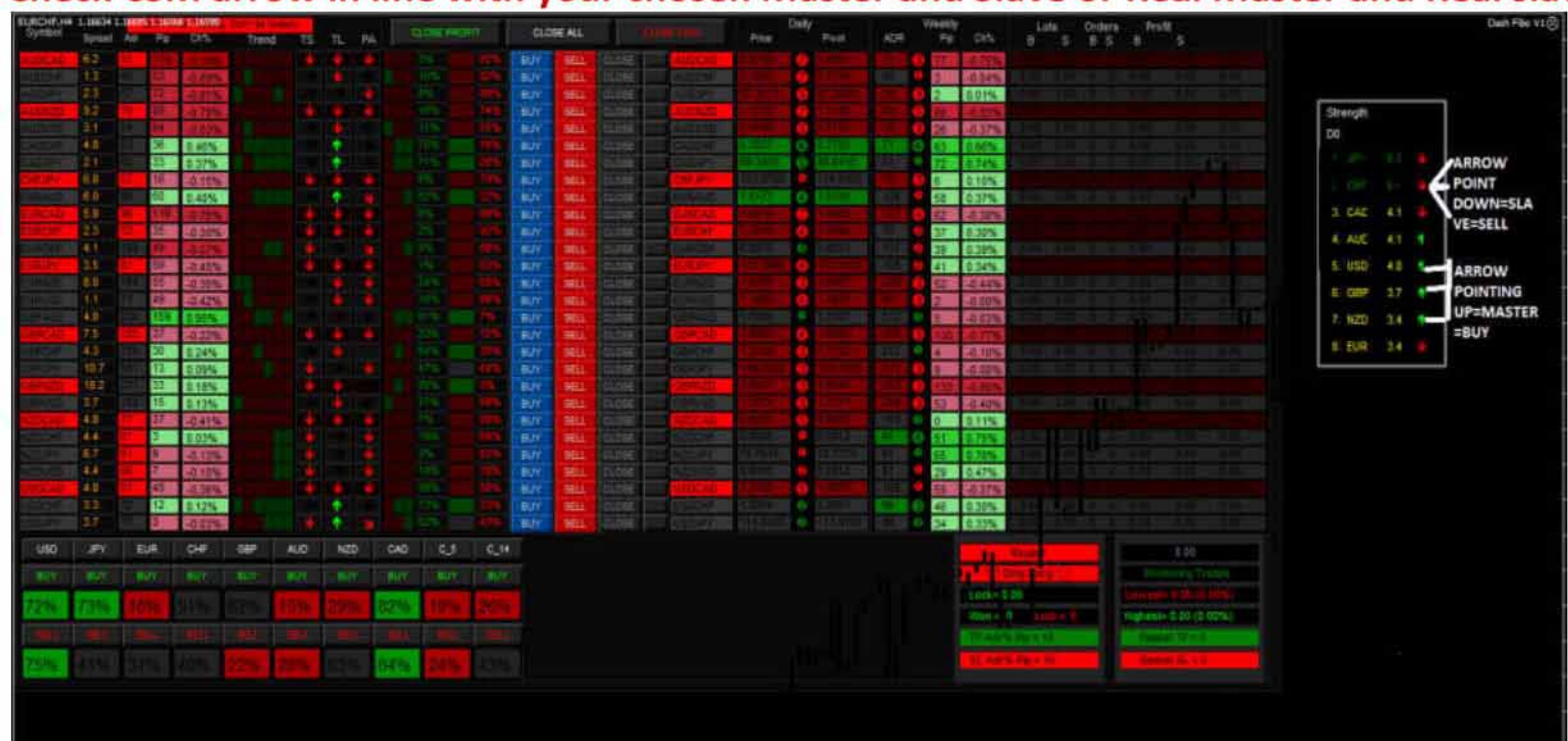
Symbol	Spread	Adr	Pip	Ch%	Trend	TS	TL	PA	CLOSE PROFIT	CLOSE ALL	CLOSE LOSS	Price	Daily	Pivot	ADR	Weekly	Pip	Ch%	Lots	Orders	Profit	S
AUDCAD	1.3	31	30	-0.09%		↓	↓	↓	7%	89%	BUY	SELL	CLOSE	AUDCAD	0.7517	0.7516	31	57	0.00	0.00	0.00	0.00
AUDCHF	1.1	30	22	-0.04%		↓	↓	↓	15%	80%	BUY	SELL	CLOSE	AUDCHF	0.7517	0.7516	31	57	0.00	0.00	0.00	0.00
AUDJPY	0.8	32	45	0.13%		↓	↓	↓	53%	44%	BUY	SELL	CLOSE	AUDJPY	0.7517	0.7516	31	57	0.00	0.00	0.00	0.00
AUDNZD	0.8	30	5	0.08%		↓	↓	↓	51%	47%	BUY	SELL	CLOSE	AUDNZD	1.1166	1.1165	105	28	0.00	0.00	0.00	0.00
AUDUSD	0.8	30	19	-0.25%		↓	↓	↓	4%	94%	BUY	SELL	CLOSE	AUDUSD	0.7517	0.7516	31	57	0.00	0.00	0.00	0.00
CADCHF	1.5	54	2	0.06%		↑	↑	↑	97%	1%	BUY	SELL	CLOSE	CADCHF	0.7790	0.7770	212	53	0.00	0.00	0.00	0.00
CADJPY	1.3	54	20	0.22%		↑	↑	↑	92%	4%	BUY	SELL	CLOSE	CADJPY	0.7517	0.7516	31	57	0.00	0.00	0.00	0.00
CHFJPY	1.4	30	22	0.19%		↑	↑	↑	93%	9%	BUY	SELL	CLOSE	CHFJPY	0.7517	0.7516	31	57	0.00	0.00	0.00	0.00
EURAUD	0.7	107	25	0.16%		↑	↑	↑	94%	3%	BUY	SELL	CLOSE	EURAUD	1.5112	1.5144	143	351	0.00	0.00	0.00	0.00
EURCAD	1.3	102	21	0.07%		↑	↑	↑	91%	42%	BUY	SELL	CLOSE	EURCAD	1.5013	1.5024	136	246	0.00	0.00	0.00	0.00
EURCHF	1.8	56	8	0.08%		↑	↑	↑	77%	6%	BUY	SELL	CLOSE	EURCHF	1.5112	1.5172	74	104	0.00	0.00	0.00	0.00
EURGBP	1.1	40	5	0.05%		↑	↑	↑	66%	24%	BUY	SELL	CLOSE	EURGBP	0.7517	0.7516	31	57	0.00	0.00	0.00	0.00
EURJPY	0.7	31	10	0.27%		↑	↑	↑	90%	9%	BUY	SELL	CLOSE	EURJPY	0.7517	0.7516	31	57	0.00	0.00	0.00	0.00
EURNZD	2.2	134	34	0.21%		↑	↑	↑	83%	11%	BUY	SELL	CLOSE	EURNZD	1.7246	1.7185	179	413	0.00	0.00	0.00	0.00
EURUSD	0.5	31	13	-0.11%		↑	↑	↑	7%	94%	BUY	SELL	CLOSE	EURUSD	1.1807	1.1779	84	150	0.00	0.00	0.00	0.00
GBPUSD	1.8	113	21	0.12%		↑	↑	↑	71%	18%	BUY	SELL	CLOSE	GBPUSD	0.7517	0.7516	31	57	0.00	0.00	0.00	0.00
GBPGBP	2.3	108	11	0.01%		↑	↑	↑	34%	66%	BUY	SELL	CLOSE	GBPGBP	0.7517	0.7516	31	57	0.00	0.00	0.00	0.00
GBPCHF	1.7	114	7	0.05%		↑	↑	↑	13%	86%	BUY	SELL	CLOSE	GBPCHF	0.7517	0.7516	31	57	0.00	0.00	0.00	0.00
GBPJPY	1.5	113	40	0.27%		↑	↑	↑	81%	18%	BUY	SELL	CLOSE	GBPJPY	0.7517	0.7516	31	57	0.00	0.00	0.00	0.00
GBPNZD	3.7	158	32	0.17%		↑	↑	↑	72%	28%	BUY	SELL	CLOSE	GBPNZD	0.7517	0.7516	31	57	0.00	0.00	0.00	0.00
GBPUSD	0.9	34	19	0.15%		↑	↑	↑	46%	53%	BUY	SELL	CLOSE	GBPUSD	0.7517	0.7516	31	57	0.00	0.00	0.00	0.00
NZDCAD	1.9	54	6	-0.13%		↓	↓	↓	14%	85%	BUY	SELL	CLOSE	NZDCAD	0.7517	0.7516	31	57	0.00	0.00	0.00	0.00
NZDCHF	1.8	50	3	-0.07%		↓	↓	↓	22%	78%	BUY	SELL	CLOSE	NZDCHF	0.7517	0.7516	31	57	0.00	0.00	0.00	0.00
NZDJPY	1.4	51	11	0.11%		↓	↓	↓	57%	36%	BUY	SELL	CLOSE	NZDJPY	0.7517	0.7516	31	57	0.00	0.00	0.00	0.00
NZDUSD	0.9	33	19	-0.29%		↓	↓	↓	8%	92%	BUY	SELL	CLOSE	NZDUSD	0.7517	0.7516	31	57	0.00	0.00	0.00	0.00
USDCAD	1.1	34	21	0.16%		↓	↓	↓	95%	0%	BUY	SELL	CLOSE	USDCAD	0.7517	0.7516	31	57	0.00	0.00	0.00	0.00
USDCHF	1.1	34	22	0.2%		↓	↓	↓	96%	1%	BUY	SELL	CLOSE	USDCHF	0.7517	0.7516	31	57	0.00	0.00	0.00	0.00
USDJPY	0.4	31	45	0.40%		↓	↓	↓	97%	3%	BUY	SELL	CLOSE	USDJPY	0.7517	0.7516	31	57	0.00	0.00	0.00	0.00

Pairs to trade : **BUY (USDJPY, AND CADJPY)** AND **SELL (AUDUSD, NZDCAD AND AUDCAD).**

3. Or look for Real Master and Real Slave.



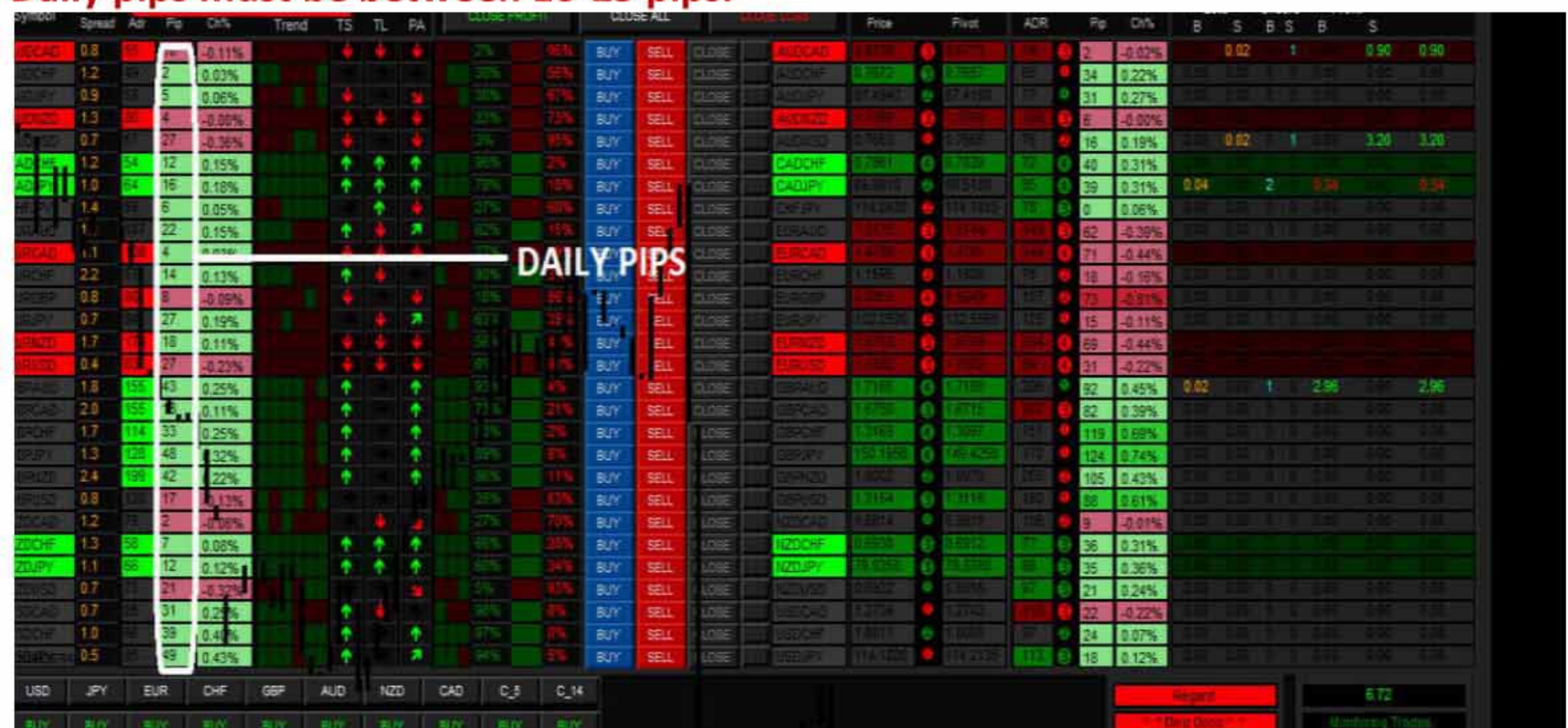
4. Check CSM arrow in line with your chosen Master and Slave or Real Master and Real slave.



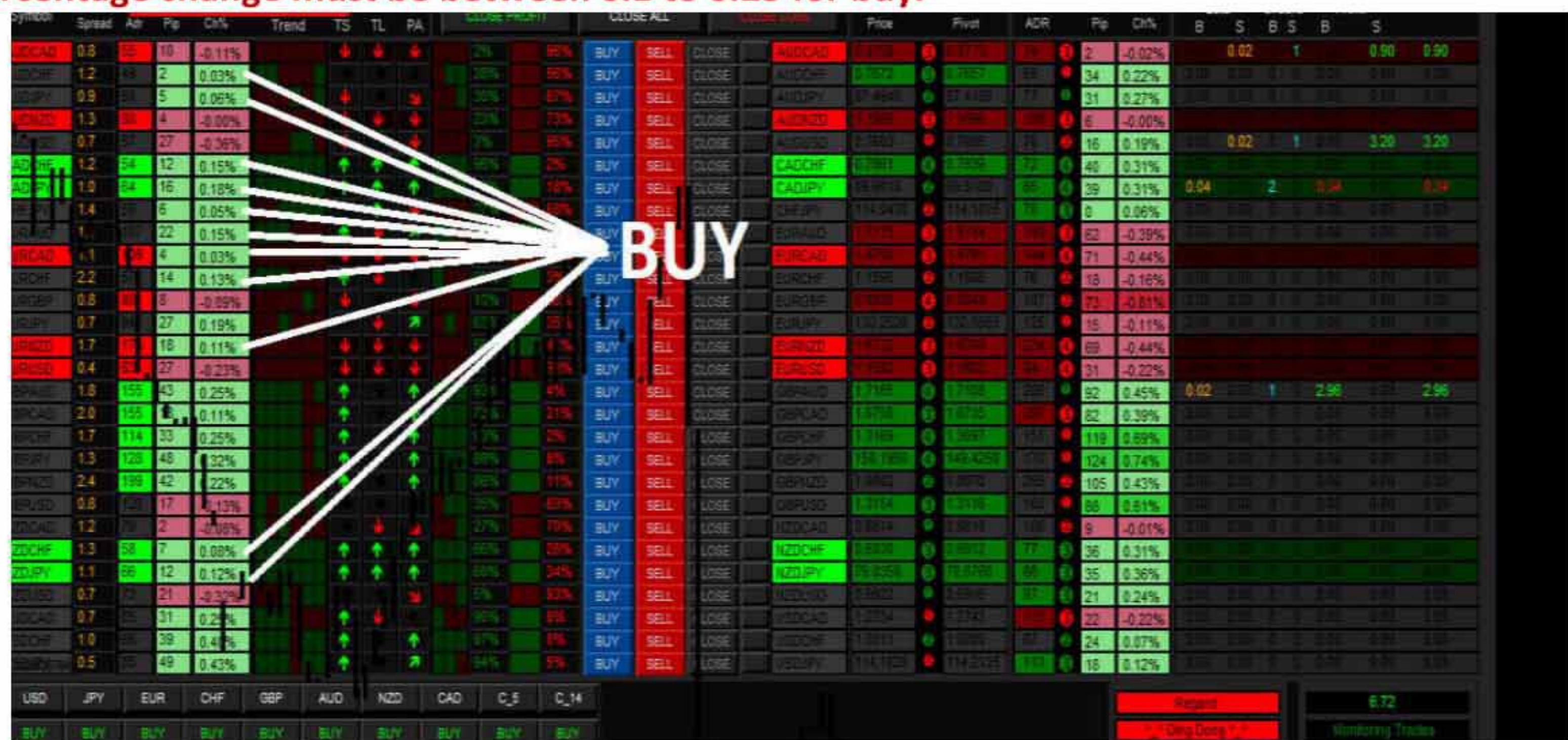
RULE TWO

The following must be considered to satisfy rule 2.

1. Daily pips must be between 10-25 pips.

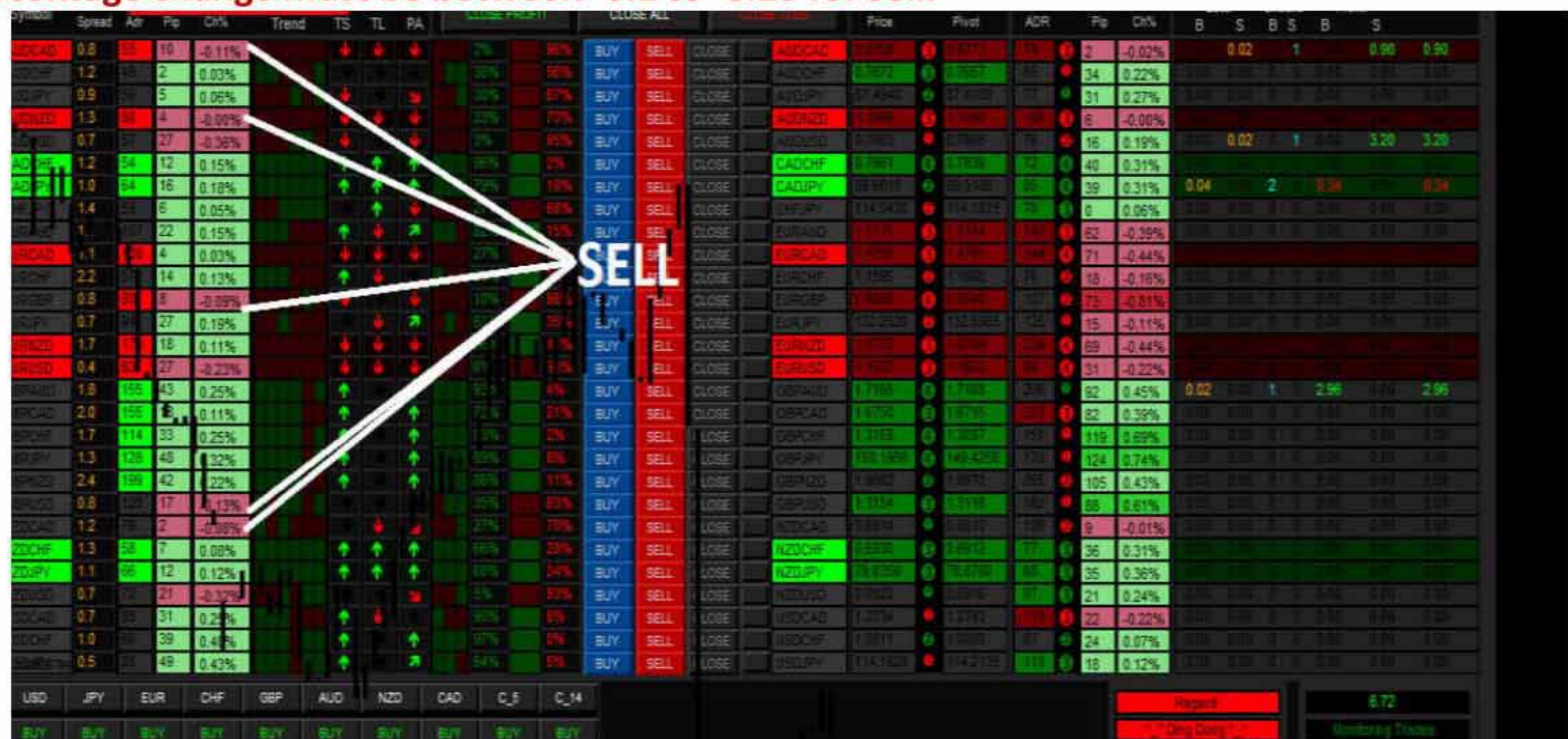


2a. Percentage change must be between 0.1 to 0.25 for buy.



Symbol	Spread	Ask	Bid	Ch%	Trend	TS	TL	PA	Close Profit	Close All	Price	Pivot	ADR	Pp	Ch%	B	S	B	S	B	S
USD/CAD	0.8	1.0	0.9	-0.11%	↓	↓	↓	↓	2%	98%	BUY	SELL	CLOSE	1.3500	1.3500	0.02	1	0.90	0.90		
EUR/CHF	1.2	1.2	1.2	0.03%	↑	↑	↑	↑	38%	62%	BUY	SELL	CLOSE	0.9375	0.9375	0.02	1	0.90	0.90		
GBP/JPY	0.9	1.0	0.9	0.06%	↑	↑	↑	↑	35%	65%	BUY	SELL	CLOSE	0.7440	0.7440	0.02	1	0.90	0.90		
USD/JPY	1.3	1.3	1.3	-0.00%	↓	↓	↓	↓	23%	77%	BUY	SELL	CLOSE	1.4000	1.4000	0.02	1	0.90	0.90		
EUR/USD	0.7	1.0	0.9	-0.36%	↓	↓	↓	↓	7%	93%	BUY	SELL	CLOSE	1.3500	1.3500	0.02	1	0.90	0.90		
USD/CHF	1.2	1.2	1.2	0.15%	↑	↑	↑	↑	98%	2%	BUY	SELL	CLOSE	0.9375	0.9375	0.02	1	0.90	0.90		
CAD/JPY	1.0	1.0	1.0	0.18%	↑	↑	↑	↑	98%	2%	BUY	SELL	CLOSE	0.9375	0.9375	0.02	1	0.90	0.90		
EUR/GBP	1.4	1.4	1.4	0.05%	↑	↑	↑	↑	98%	2%	BUY	SELL	CLOSE	0.9375	0.9375	0.02	1	0.90	0.90		
USD/GBP	1.1	1.1	1.1	0.15%	↑	↑	↑	↑	98%	2%	BUY	SELL	CLOSE	0.9375	0.9375	0.02	1	0.90	0.90		
EUR/CAD	1.1	1.1	1.1	0.03%	↑	↑	↑	↑	98%	2%	BUY	SELL	CLOSE	0.9375	0.9375	0.02	1	0.90	0.90		
EUR/CHF	2.2	2.2	2.2	0.13%	↑	↑	↑	↑	98%	2%	BUY	SELL	CLOSE	0.9375	0.9375	0.02	1	0.90	0.90		
EUR/JPY	0.8	1.0	0.9	-0.99%	↓	↓	↓	↓	10%	90%	BUY	SELL	CLOSE	0.9375	0.9375	0.02	1	0.90	0.90		
GBP/JPY	0.7	1.0	0.9	0.19%	↑	↑	↑	↑	98%	2%	BUY	SELL	CLOSE	0.9375	0.9375	0.02	1	0.90	0.90		
GBP/USD	1.7	1.7	1.7	0.11%	↑	↑	↑	↑	98%	2%	BUY	SELL	CLOSE	0.9375	0.9375	0.02	1	0.90	0.90		
GBP/GBP	0.4	1.0	0.9	-0.23%	↓	↓	↓	↓	98%	2%	BUY	SELL	CLOSE	0.9375	0.9375	0.02	1	0.90	0.90		
GBP/CAD	1.8	1.8	1.8	0.25%	↑	↑	↑	↑	98%	2%	BUY	SELL	CLOSE	0.9375	0.9375	0.02	1	0.90	0.90		
GBP/CHF	2.0	2.0	2.0	0.11%	↑	↑	↑	↑	98%	2%	BUY	SELL	CLOSE	0.9375	0.9375	0.02	1	0.90	0.90		
GBP/JPY	1.7	1.7	1.7	0.25%	↑	↑	↑	↑	98%	2%	BUY	SELL	CLOSE	0.9375	0.9375	0.02	1	0.90	0.90		
GBP/USD	1.3	1.3	1.3	0.25%	↑	↑	↑	↑	98%	2%	BUY	SELL	CLOSE	0.9375	0.9375	0.02	1	0.90	0.90		
GBP/GBP	2.4	2.4	2.4	0.22%	↑	↑	↑	↑	98%	2%	BUY	SELL	CLOSE	0.9375	0.9375	0.02	1	0.90	0.90		
GBP/CAD	0.8	1.0	0.9	-0.13%	↓	↓	↓	↓	98%	2%	BUY	SELL	CLOSE	0.9375	0.9375	0.02	1	0.90	0.90		
GBP/CHF	1.2	1.2	1.2	-0.06%	↓	↓	↓	↓	98%	2%	BUY	SELL	CLOSE	0.9375	0.9375	0.02	1	0.90	0.90		
USD/CHF	1.3	1.3	1.3	0.08%	↑	↑	↑	↑	98%	2%	BUY	SELL	CLOSE	0.9375	0.9375	0.02	1	0.90	0.90		
USD/JPY	1.1	1.1	1.1	0.12%	↑	↑	↑	↑	98%	2%	BUY	SELL	CLOSE	0.9375	0.9375	0.02	1	0.90	0.90		
USD/GBP	0.7	1.0	0.9	-0.32%	↓	↓	↓	↓	98%	2%	BUY	SELL	CLOSE	0.9375	0.9375	0.02	1	0.90	0.90		
USD/CAD	0.7	1.0	0.9	0.22%	↑	↑	↑	↑	98%	2%	BUY	SELL	CLOSE	0.9375	0.9375	0.02	1	0.90	0.90		
USD/CHF	1.0	1.0	1.0	0.42%	↑	↑	↑	↑	98%	2%	BUY	SELL	CLOSE	0.9375	0.9375	0.02	1	0.90	0.90		
USD/GBP	0.5	1.0	0.9	0.43%	↑	↑	↑	↑	98%	2%	BUY	SELL	CLOSE	0.9375	0.9375	0.02	1	0.90	0.90		

2b. Percentage change must be between -0.1 to -0.25 for sell.

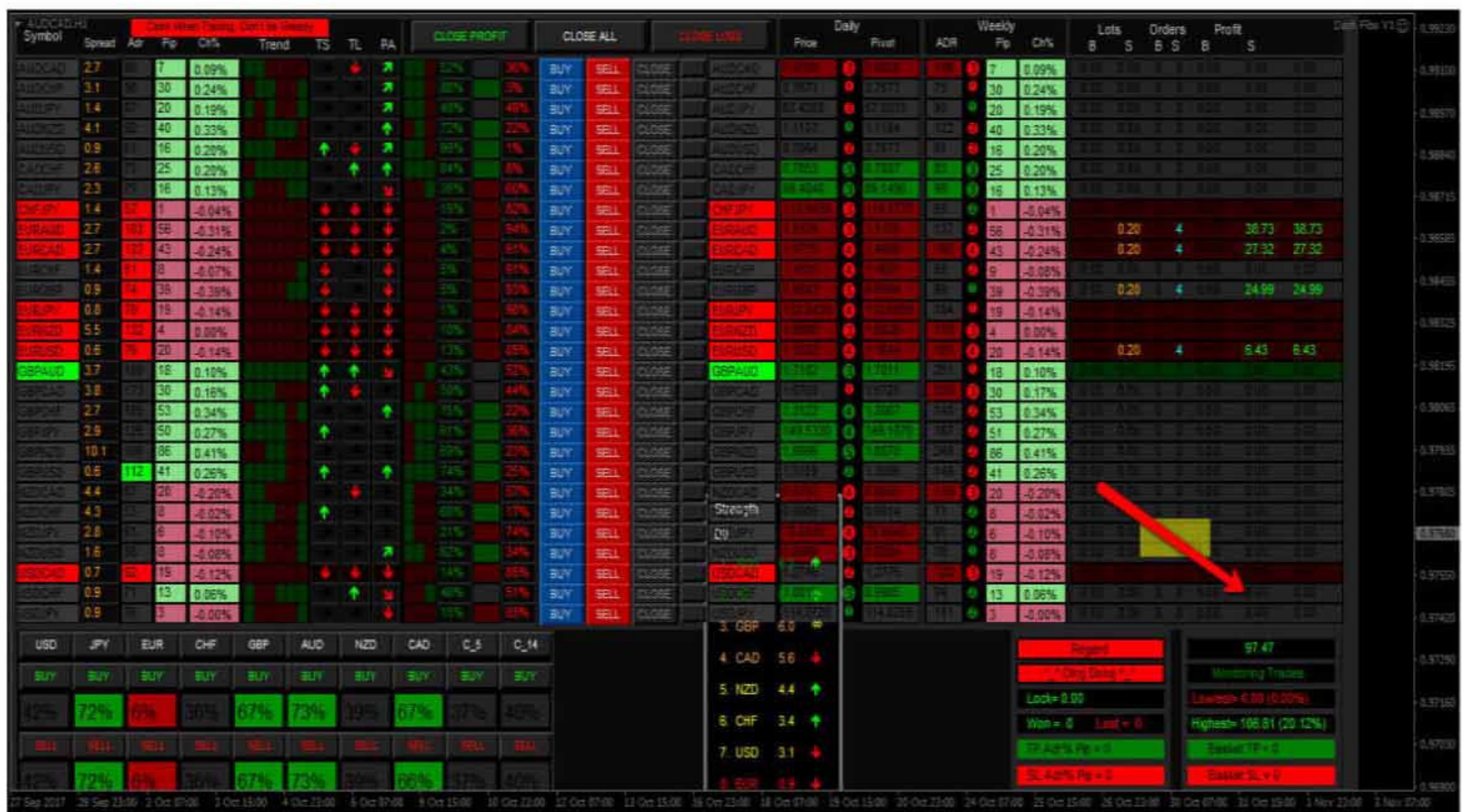


Symbol	Spread	Ask	Bid	Ch%	Trend	TS	TL	PA	Close Profit	Close All	Price	Pivot	ADR	Pp	Ch%	B	S	B	S	B	S
USD/CAD	0.8	1.0	0.9	-0.11%	↓	↓	↓	↓	2%	98%	BUY	SELL	CLOSE	1.3500	1.3500	0.02	1	0.90	0.90		
EUR/CHF	1.2	1.2	1.2	0.03%	↑	↑	↑	↑	38%	62%	BUY	SELL	CLOSE	0.9375	0.9375	0.02	1	0.90	0.90		
GBP/JPY	0.9	1.0	0.9	0.06%	↑	↑	↑	↑	35%	65%	BUY	SELL	CLOSE	0.7440	0.7440	0.02	1	0.90	0.90		
USD/JPY	1.3	1.3	1.3	-0.00%	↓	↓	↓	↓	23%	77%	BUY	SELL	CLOSE	1.4000	1.4000	0.02	1	0.90	0.90		
EUR/USD	0.7	1.0	0.9	-0.36%	↓	↓	↓	↓	7%	93%	BUY	SELL	CLOSE	1.3500	1.3500	0.02	1	0.90	0.90		
USD/CHF	1.2	1.2	1.2	0.15%	↑	↑	↑	↑	98%	2%	BUY	SELL	CLOSE	0.9375	0.9375	0.02	1	0.90	0.90		
CAD/JPY	1.0	1.0	1.0	0.18%	↑	↑	↑	↑	98%	2%	BUY	SELL	CLOSE	0.9375	0.9375	0.02	1	0.90	0.90		
EUR/GBP	1.4	1.4	1.4	0.05%	↑	↑	↑	↑	98%	2%	BUY	SELL	CLOSE	0.9375	0.9375	0.02	1	0.90	0.90		
USD/GBP	1.1	1.1	1.1	0.15%	↑	↑	↑	↑	98%	2%	BUY	SELL	CLOSE	0.9375	0.9375	0.02	1	0.90	0.90		
EUR/CAD	1.1	1.1	1.1	0.03%	↑	↑	↑	↑	98%	2%	BUY	SELL	CLOSE	0.9375	0.9375	0.02	1	0.90	0.90		
EUR/CHF	2.2	2.2	2.2	0.13%	↑	↑	↑	↑	98%	2%	BUY	SELL	CLOSE	0.9375	0.9375	0.02	1	0.90	0.90		
EUR/JPY	0.8	1.0	0.9	-0.99%	↓	↓	↓	↓	10%	90%	BUY	SELL	CLOSE	0.9375	0.9375	0.02	1	0.90	0.90		
GBP/JPY	0.7	1.0	0.9	0.19%	↑	↑	↑	↑	98%	2%	BUY	SELL	CLOSE	0.9375	0.9375	0.02	1	0.90	0.90		
GBP/USD	1.7	1.7	1.7	0.11%	↑	↑	↑	↑	98%	2%	BUY	SELL	CLOSE	0.9375	0.9375	0.02	1	0.90	0.90		
GBP/GBP	0.4	1.0	0.9	-0.23%	↓	↓	↓	↓	98%	2%	BUY	SELL	CLOSE	0.9375	0.9375	0.02	1	0.90	0.90		
GBP/CAD	1.8	1.8	1.8	0.25%	↑	↑	↑	↑	98%	2%	BUY	SELL	CLOSE	0.9375	0.9375	0.02	1	0.90	0.90		
GBP/CHF	2.0	2.0	2.0	0.11%	↑	↑	↑	↑	98%	2%	BUY	SELL	CLOSE	0.9375	0.9375	0.02	1	0.90	0.90		
GBP/JPY	1.7	1.7	1.7	0.25%	↑	↑	↑	↑	98%	2%	BUY	SELL	CLOSE	0.9375	0.9375	0.02	1	0.90	0.90		
GBP/USD	1.3	1.3	1.3	0.25%	↑	↑	↑	↑	98%	2%	BUY	SELL	CLOSE	0.9375	0.9375	0.02	1	0.90	0.90		
GBP/GBP	2.4	2.4	2.4	0.22%	↑	↑	↑	↑	98%	2%	BUY	SELL	CLOSE	0.9375	0.9375	0.02	1	0.90	0.90		
GBP/CAD	0.8	1.0	0.9	-0.13%	↓	↓	↓	↓	98%	2%	BUY	SELL	CLOSE	0.9375	0.9375	0.02	1	0.90	0.90		
GBP/CHF	1.2	1.2	1.2	-0.06%	↓	↓	↓	↓	98%	2%	BUY	SELL	CLOSE	0.9375	0.9375	0.02	1	0.90	0.90		
USD/CHF	1.3	1.3	1.3	0.08%	↑	↑	↑	↑	98%	2%	BUY	SELL	CLOSE	0.9375	0.9375	0.02	1	0.90	0.90		
USD/JPY	1.1	1.1	1.1	0.12%	↑	↑	↑	↑	98%	2%	BUY	SELL	CLOSE	0.9375	0.9375	0.02	1	0.90	0.90		
USD/GBP	0.7	1.0	0.9	-0.32%	↓	↓	↓	↓	98%	2%	BUY	SELL	CLOSE	0.9375	0.9375	0.02	1	0.90	0.90		
USD/CAD	0.7	1.0	0.9	0.22%	↑	↑	↑	↑	98%	2%	BUY	SELL	CLOSE	0.9375	0.9375	0.02	1	0.90	0.90		
USD/CHF	1.0	1.0	1.0	0.42%	↑	↑	↑	↑	98%	2%	BUY	SELL	CLOSE	0.9375	0.9375	0.02	1	0.90	0.90		
USD/GBP	0.5	1.0	0.9	0.43%	↑	↑	↑	↑	98%	2%	BUY	SELL	CLOSE	0.9375	0.9375	0.02	1	0.90	0.90		

RULE THREE: STOP LOSS

The following must be considered to satisfy rule 3.

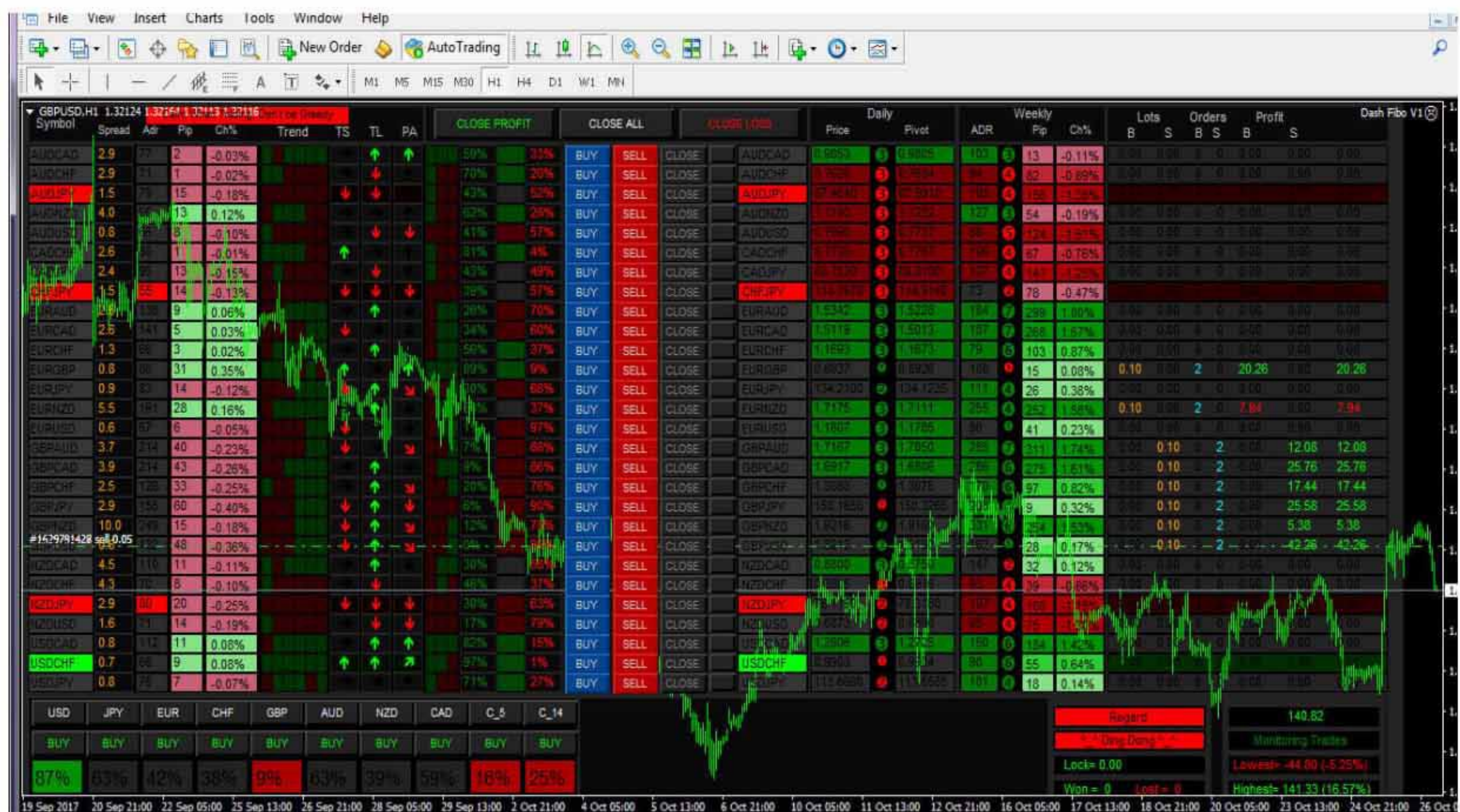
1. Exit you loss and enter the opposite if rule 1 and 2 is met.



RULE 4: Example 2

All GBP pairs satisfy the RULES.

PAIRS TO TRADE: BUY (EURGBP) AND SELL (GBPAUD, GBPCAD, GBPCHF, GBPJPY, GBPNZD AND GBPUSD).



TAKE PROFIT FOR RULE 4: This is at trader's discretion. Take your profit when you are satisfied.

This manual is a great tool if used correctly. Rule number 4 is the best of all if well understood. You must practice it over and over again on a demo before trading it on a life account