

Basket Trader v 5.1

By Swingman

2009.06.14

Explanations: LRathi

This is a Multi-timeframe(MTF) strategy trading in the direction of the higher time frame (TF) direction.(THE TREND IS YOUR FRIEND TILL IT BENDS).

Eg. ENTRY is based on the H1 with convergence of H4,D1,W1 trend .

This is a **manual trading system** programmed as an Expert Advisor. However, there is **an auxiliary auto- trading module which is in its developmental stage** which when tried and tested MAY be available for AUTO –TRADING.

This Dashboard EA works with 4 and 5 digit brokers.

Installation of Indicators and Expert Advisor (Dashboard)

Copy/Paste BasketTrader DBEA into C:\Program Files\Metatrader 4\Experts

Copy/Paste all indicators into C:\Program Files\Metatrader 4\Experts\Indicator

Close platform and restart MT4.

To use Dashboard within the platform:

Open up a chart. Right click on chart. Go to properties at the end of menu. Go to colours. Place Black on all options except FOREGROUND.(white). THIS WILL BLACKOUT THE CHART. PLACE either version of dashboard as INDICATOR (custom indicator menu from platform) or dashboard as EA from Expert Advisor Menu from within the platform. There should be a smiley face on the top right of the chart. If not...go to tools... options....Expert Advisors....tick Allow live trading.

To place indicators on chart:

Open new chart from File menu within the platform. From Custom indicators select the indicators and place on chart. Place BTrOsc and BTrATR into same window. To do this first add BTr Osc. Drag the BtrATR into the same window. Place BasketTrader HiloLines indicator on chart. **See figure 1 what your chart should look like.** Save as template. Right click chart....Template....Save As.. Give a name like 'Basket trader'.

Open up another chart and place this template on the next new currency chart etc.

The system uses as trend confirmation:

HULL MOVING AVERAGE: 27:3:0 (Thick Orange and BLUE)

In BasketTrader Hilo Lines: (SMA 21, shift 1: High) and (SMA 21, shift 1: Low).

Depending if and when the Hull (27)MA crosses the SMA Hi-Lo different signals are given which corresponding to the trend changing to different degrees of strength.

Retracements identification:

HULL MOVING AVERAGE: 8:3:0 (Thin Orange and Blue)

Candlesticks: Bullish or Bearish.

Other indicators:

BtrOsc: You will see, three different shades of green and red (reddish) histogram style bars which represent when different conditions are met in relation of the CLOSE of price candle crossing either the SMA Hi-Lo in the same direction with the Main HULL (27) Trend. There will be the words/letters: **LONG, L2, L1,(green)** and **SHORT, S2,S1(Red)**. These are seen in the right bottom corner of the indicator when various conditions are met. There are two threshold lines +1/-1 seen on the indicator. Trades are taken only if the histogram is above/below these lines. These give safer signals.

BtrATR: This indicator is used in the calculations of combination and Main trends. Further also used in the calculations of SL, Breakeven and exits for auto trading.

BasketTrader HiloLines: This combines the (SMA 21, shift 1: High) and (SMA 21, shift 1: Low) into one indicator.

Dashboard:

There are two versions of the dashboard. One version is programmed as an indicator. The other as an Expert Advisor(EA). The reasons for this is:

1. **The indicator version** while uses a massive amount of CPU memory and will freeze the computer, is handy to use on the weekends.
2. **The EA version** uses less CPU and so is preferred version to use while the market is open. This version does not work when the market is closed. Thus use INDICATOR version when market is closed.

Both versions have the **same functionalities** when used for manual trading.

Manual trading: Entry signals are given, suggested SL is placed on the 21SMA(Low) for Longs and 21SMA (Highs) for Shorts. Exits are determined by the individual trader.

Auto trading: Entry same signals as manual trading, SL and Breakeven values are calculated in the programme using ATR formulae.

NOTE: This auto trading module is still in the developmental phase and so do not use in LIVE accounts.



Figure1: Showing basic indicators for Basket trader.

Conditions to meet:

- Main trend: Histogram =1. The Hull(27) MA trend is either long or short (Thick blue or orange line colour).

- Trading signal: Histogram = 4. The Hull(8) MA trend is identical with the Main trend, and the current candle is bullish or bearish.

Expect **SHORT** or **LONG** on the indicator, and then on the dashboard an arrow **BLUE** OR **MAGENTA** (↑ or ↓ thick arrows)

Alert signals, when the above Trading signal conditions are not fulfilled:

1. – Histogram = 2. When CLOSE of the bar crosses either SMA Hi-Lo in the same direction with the Main trend.

Expect an **S1** or **L1** on the indicator, and then on the dashboard an arrow either **GREEN** or **RED** (**↑** or **↓** thin arrows).

2. – Histogram = 3. The two first conditions are met.

When the Main trend line Hull MA(27) crosses **both** SMA Hi-Lo.

Expect an **S2** or **L2** on the indicator, and then on the dashboard an arrow either **GREEN** or **RED** (or transparent arrows)

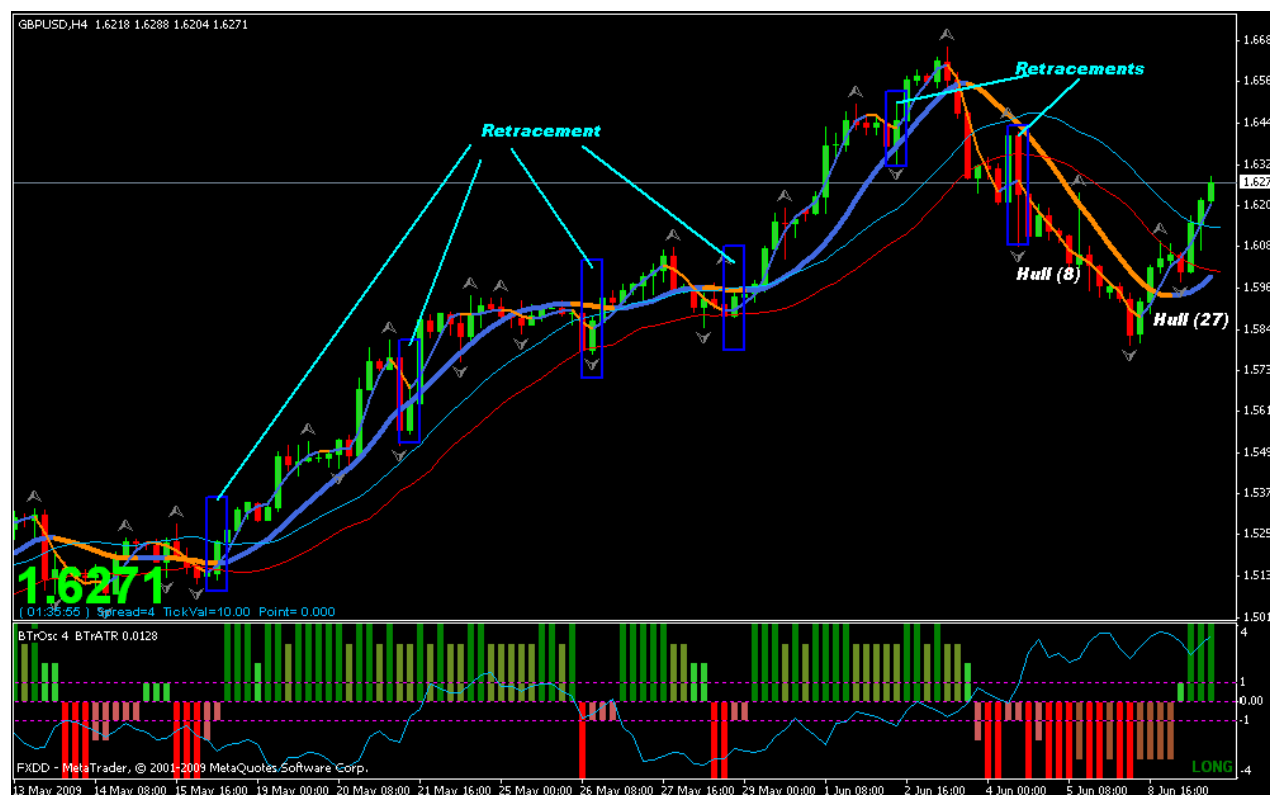


Figure 2: Showing Retracements Hull(8) MA and Bullish/Bearish Candle.

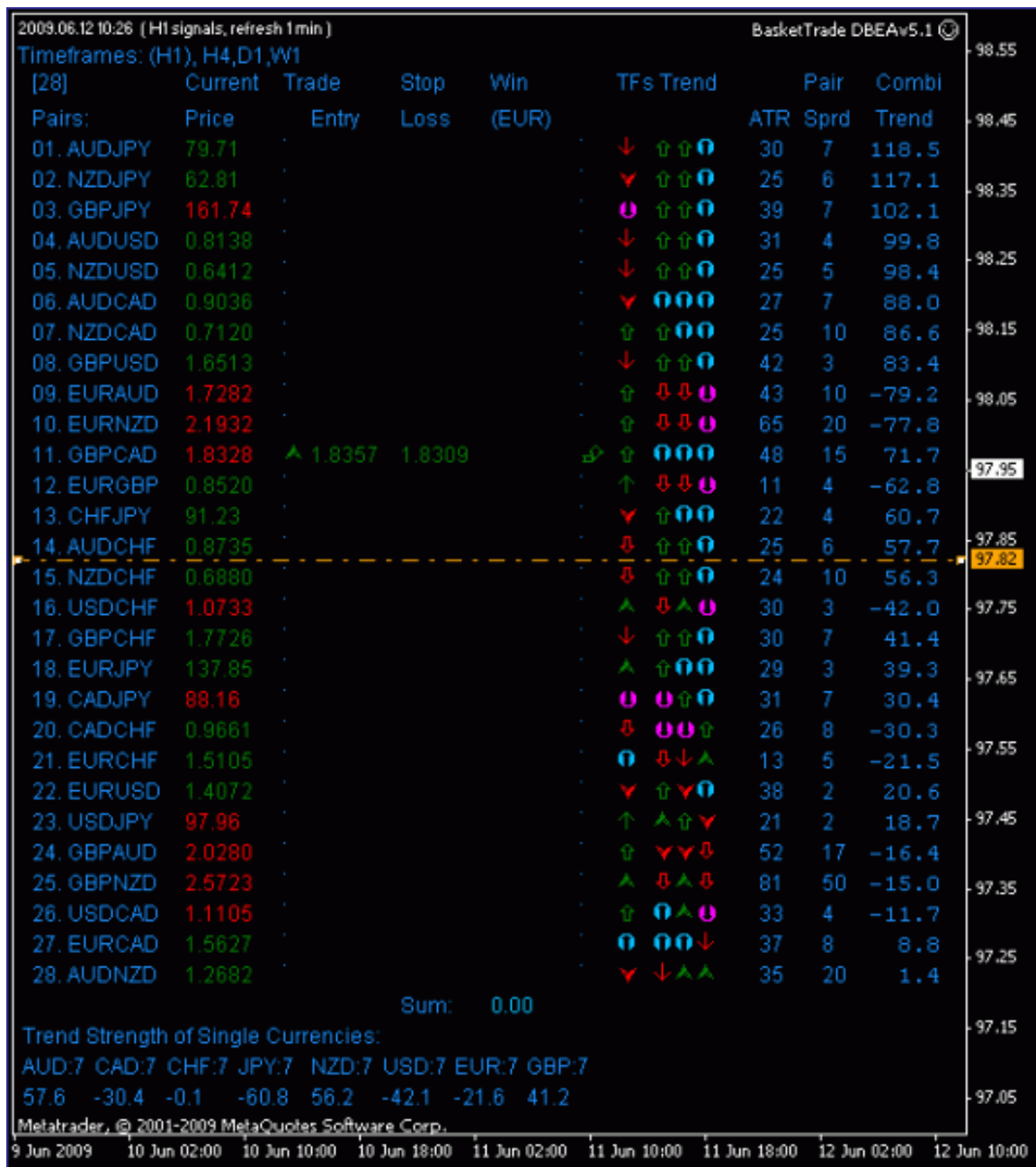


Figure 3: Show the Basket Trader EA v 5.1 dashboard. Note smiley face on Top Right hand corner.

This dashboard has the following settings.

Set to trade H4 TF : Inputs = TradingTF_5_15_30_60_240 : 240

Signals come from H1 : Inputs = Column_SignalEvaluation_MTF : 1

Main Trend from H4,D1,W1: Inputs = Trend TFs_234_1234 : 234

On top left side shows Timeframes H1,H4,D1,W1.

Signals coming from H1 Timeframe.

[28] above Pairs column: Represents that 28 currency pairs from broker is keyed into inputs of dashboard.

TF trend column: has 4 little columns represents the H1,H4,D1,W1 (left to right)

Also there are different kinds of arrows.

The thin arrows (green and red) corresponding to the L1 or S1 on the indicator when 2 of the 4 conditions are met.

The transparent arrows (green and red) corresponding to L2 and S2 on the indicator when 3 of the 4 conditions are met.

The thick arrows (light blue and magenta) corresponding to LONG and SHORT on the indicator when all 4 conditions are met.

There is a column which has [1]/[1] or 2, 3 or Special green /red arrows (squiggle-like):

[1] or [1] represents a entry signal on the H1 and that all 4xTF are showing a full signal LONG/SHORT

3 or any number (2,3,4,5,6,etc) shows that the number of full hitogram bars on the H1 TF since the entry signal (DO NOT ENTER from 3 onwards.) green for long direction red for short direction.

Special arrows: Early warning signals that the Higher TF directions are synchronized . Get ready to enter on H1 when [1] or [1] appears.

Combi Trend Column: Represents in ranking order the trend strength for the individual pairs of the list. This is calculated from the Trend strength of single currencies below on the dashboard (**Trend Strength of single currencies**) .The higher the pair is on the list the stronger the trend. The positive or negative sign is irrelevant. Eg AUDJPY (57.6 -(-60.8)=118.4 (internal rounding of values).

Main Trend: Represent the weighted value of the three/ four TF for that pair being traded. In the above setting of 234, this represents H4,D1,W1 trend weighted value. The numbers in brackets Combi trend rank/Main trend rank. The positive or negative sign is irrelevant.

ATR column: ATR(21) values for each currency pair. ATR is from "Column_SignalEvaluation_MTF. In this eg H1.

Trade entry: The value prints at the price to enter on H1 (The dashboard in this example is set to generate entry signals on H1 TF)

Stop Loss: This value is for auto trading using ATR formulae.

Win (USD) : When the EA is set on Auto trading = True this will show the Profit and Loss values in realtime

Input Tabs Variables for Basket Trader Dashboard EA v 5.1

PairlistsList1: } A number of Currency Pairs are already added. (Default) Add or
PairlistsList2: } delete securities here with a “comma” to separate each new security.
PairlistsList3: }

TradingTF_5_15_30_60_240 = 240 (Default). This represents the trader is trading the H4 chart/TF. Example: change to =15 represents the trader is trading the M15 chart/TF. ie choose the sort of trader you are (the TF you prefer to trade) and change input here.

TimeframeList: 60,240,1440,10080

TrendTFs_234_1234 : 234 (Default) Main trend weighted value taken from the three Higher TFs displaced on Dashboard. For this example :H4,D1,W1.

Column_SignalEvaluation_MTF=1 (Default). This represent the lowest TF seen on your dashboard . Signals will be generated from this TF for all arrows, alerts etc.

Example: with the default settings for trading TF=240, and the TimeFrameList seen on the dashboard is H1,H4,D1,W1

Column_SignalEvaluation_MTF= 0 or 1. The signals will be generated from H1 TF.

Column_SignalEvaluation_MTF= 2. The signals will be generated from H4 TF.

Column_SignalEvaluation_MTF= 3. The signals will be generated from D1 TF.

SendAlerts_Signal: true (Default)

SendEmail_Signal: false (Default)

PrintAlert_Signal : false(Default)

RefreshPeriod: 1 (default) Represents 1 minute.

Trading Parameters (For Auto-Trading Only. STILL IN DEVELOPMENTAL STAGE !)

EA Trading_Activ : False (Default) This represents manual trading. For Auto- trading = True.

MaxEntryRanking: 0 (Default)

For -1 -> the program auto-trade automatically all pairs

For 0 -> the program auto-trade automatically the first half of the ranked pairs

For n -> the program auto trade the first n ranked pairs

Alerts are fired for all signals, but auto-trading is only for MaxEntryRange pairs.

Min_Lots: 0.1 (Default)

Offset-EntryPoints = 1 (Default) Represents number of pips above/below previous candle high/low

*BreakEven_Points = 2 (Default)

*Factor_InitialStopLoss: 1.0 (Default)

*Factor_BreakEven: 0.5 (Default)

*Factor_Hilo Trail: 1.0 (Default)

*See Special notes below.

Display Parameters

Show_EntryValues: true (Default)

Show_Single Currencies: true (Default) Represents the Trend strength of individual currencies in the row at the bottom of the dashboard. Change if you prefer not to see Single currency trend strength.

ShowColumn_CurrentPrice: true (Default) Change if you prefer not to see current price.

ShowColumn_ATR : true (Default) This represent ATR (21) from "Column_SignalEvaluation_MTF"

ShowColumn_Pair Spread: true (Default) Change if you prefer not to see the pair spread.

ShowColumn_CombiTrend: true (Default) Change if you prefer not to see current price.

ShowColumn_MainTrend: true (Default) Change if you prefer not to see current price.

Display_Window : 0 (default) The dashboard is displayed on the chart section of the chart versus an indicator window below the chart.

If you would like to place the dashboard in the indicator window, you can do so using the "smEmptyWindow" indicator attached.

***Special Notes for Auto-Trading in version 5.1.**

(For later versions it is possible that the rules change!)

For Long

Initial StopLoss

- Low Min from the last two bars

or

- Entry minus $ATR * Factor_InitialStopLoss$

The Initial StopLoss is a "soft" SL, this means that only if the close of the bar crosses this SL we close the position.

BreakEven

- After an excursion of the price $> Entry + ATR * Factor_Breakeven$, set 2 points above entry price as break even stop

Trailing stop

- After an excursion of the price $> Highs Avg Line + ATR * Factor_Hilo Trail$, set the Highs Avg Line as StopLoss.

- Priority has the direction change off Hull(8)