

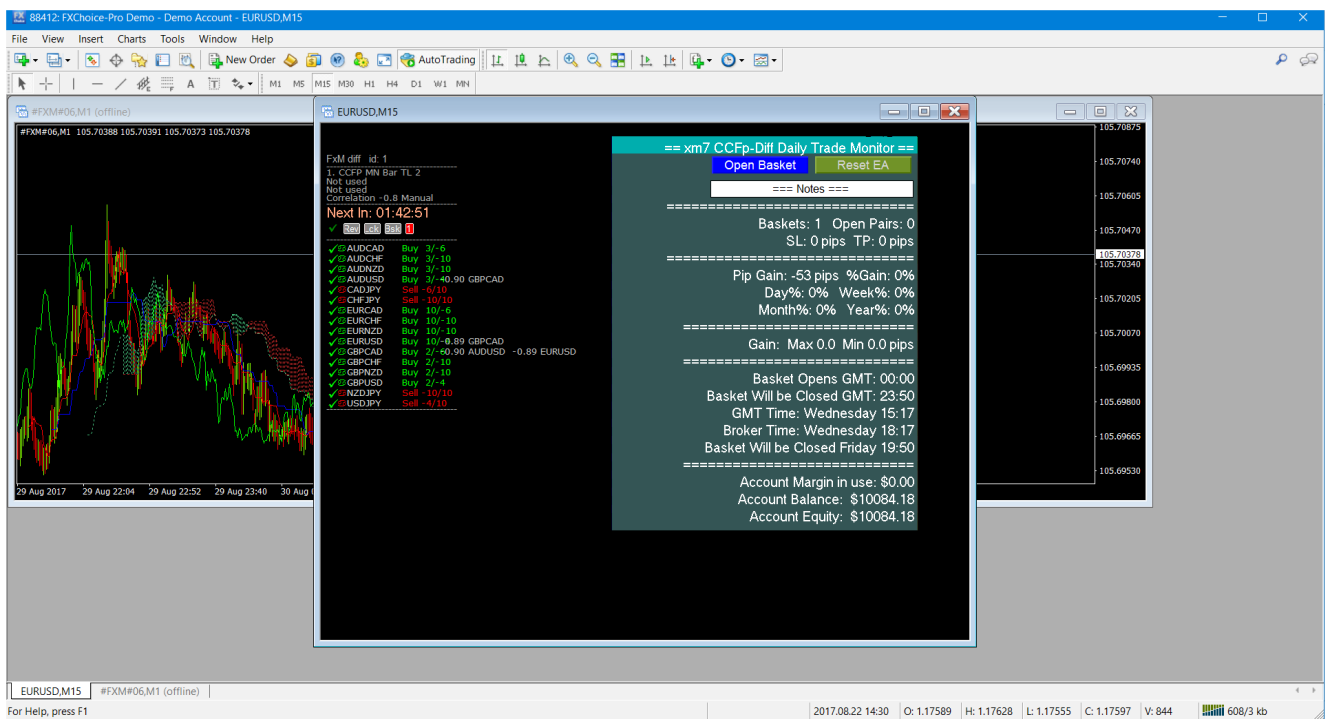
Offline Chart Writer FXM_Writer.ex4

by: BAE67

This indicator has been developed by **FXMadness** and provided for free at FF. I have very limited experience with it, which I hope will be of use to you.

I am assuming the people trying to learn the offline chart writer are already familiar with the basket trading indicator “FXM__Diff3.ex4” and need only to learn to use “FXM_Writer.ex4.”

When using FXM__Diff3.ex4 your screen should look like this with FXM__Diff3.ex4 already loaded.



1. First, open your FXM__Diff3.ex4 properties. In there, set the “auto lock the selection on xm7 basket open” from “false” to “true.” As you see in Figure 1.

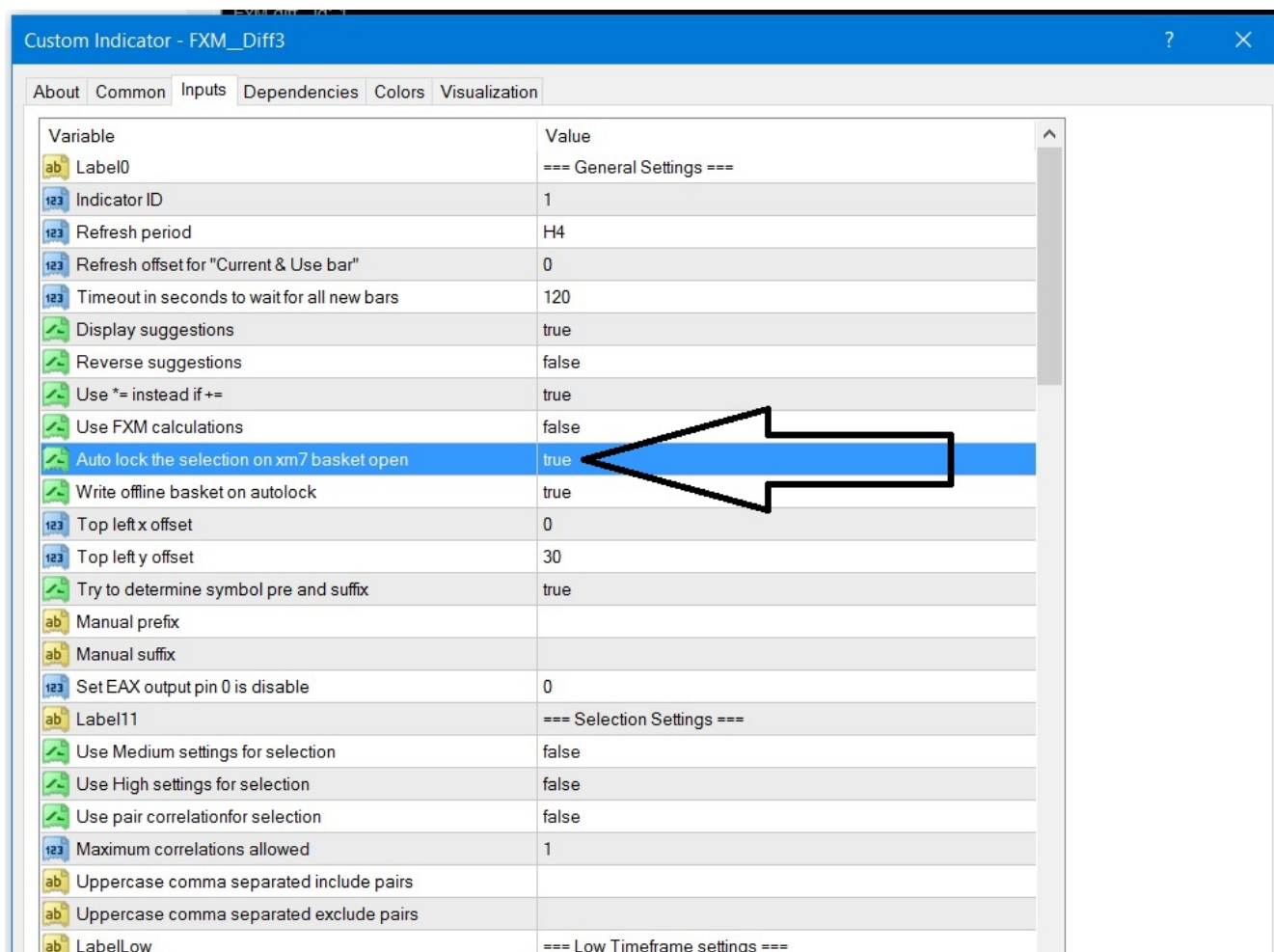


Figure 1

2. In the next step, set the “write offline basket on autolock” from “false” to “true” as you can see in Figure 2. Then close the FXM__Diff3.ex4.

If you need to look at the offline chart before opening the basket, you need to lock FXM__Diff3.ex4 with the button that has been incorporated into the indicator. Otherwise, you can look at the offline chart once you have opened the basket.

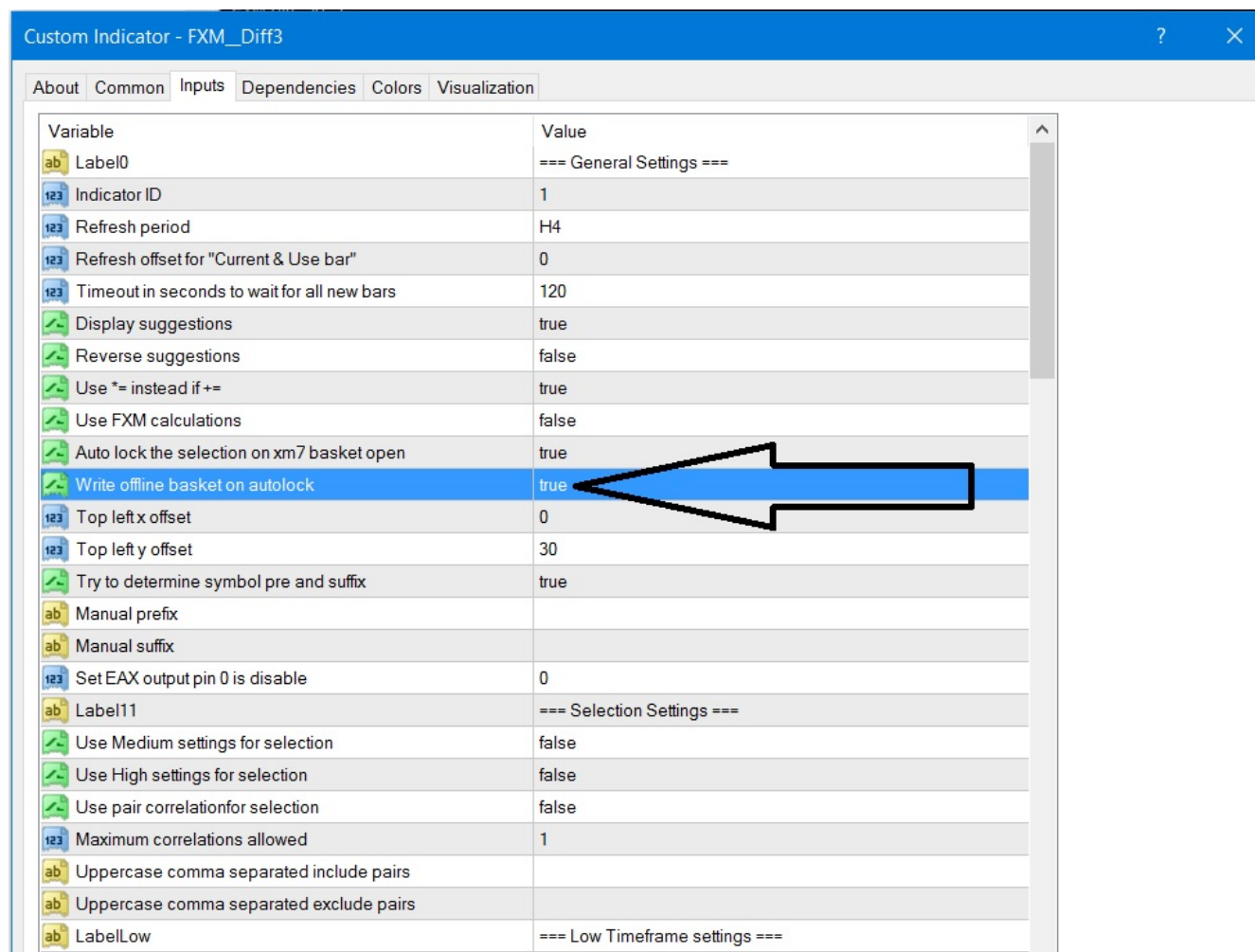


Figure 2

- Now you need to attach FXM_Writer.ex4 to the same chart where your basket is. Sometime it does not attach on the first, second or even third try. But it will attach eventually. The inputs for FXM_Writer.ex4 are very few so should not be confusing to anyone as you can see in Figure 3.

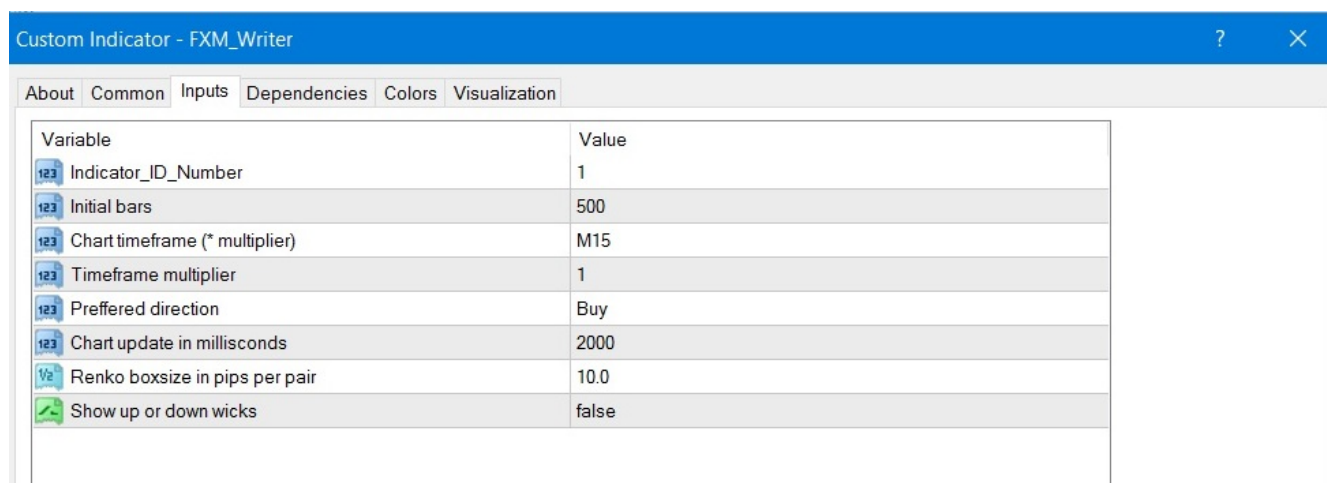


Figure 3

4. Make sure that in FXM_Writer.ex4, the indicator ID is the same as your basket as you can see in Figure 4. You can change the other setting in FXM_Writer.ex4 to meet your needs, that is something different for everyone.

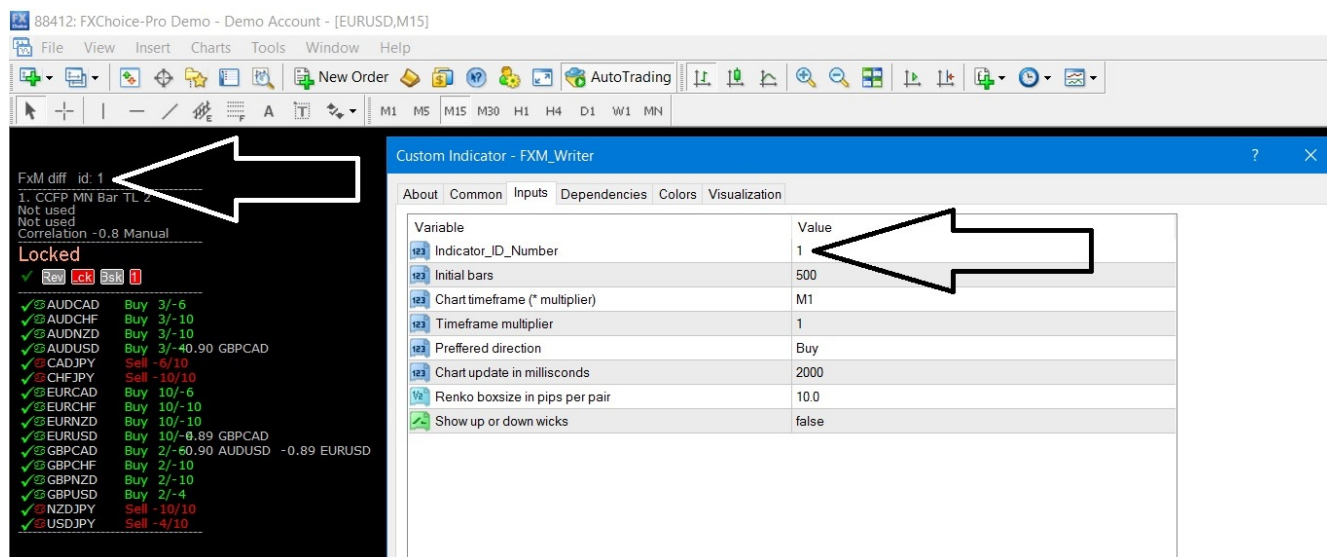


Figure 4

5. Then you need to go to “Files” in your mt4 and choose “Open Offline” as you can see in Figure 5.

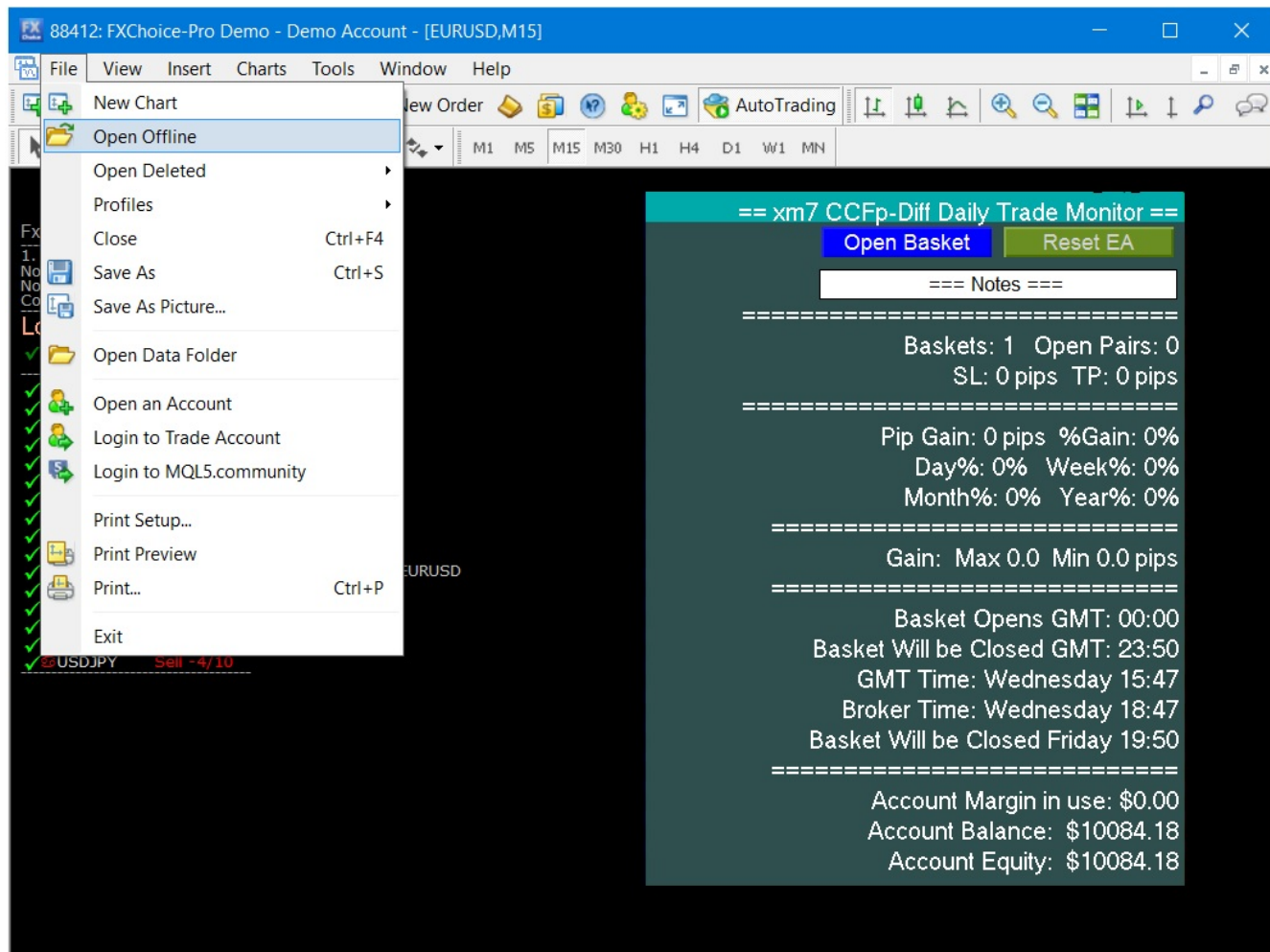


Figure 5

6. Now you need to find the offline chart that you are currently working on. The way I do it, I look for “timeframe” and “date.” This can be seen in Figure 6.

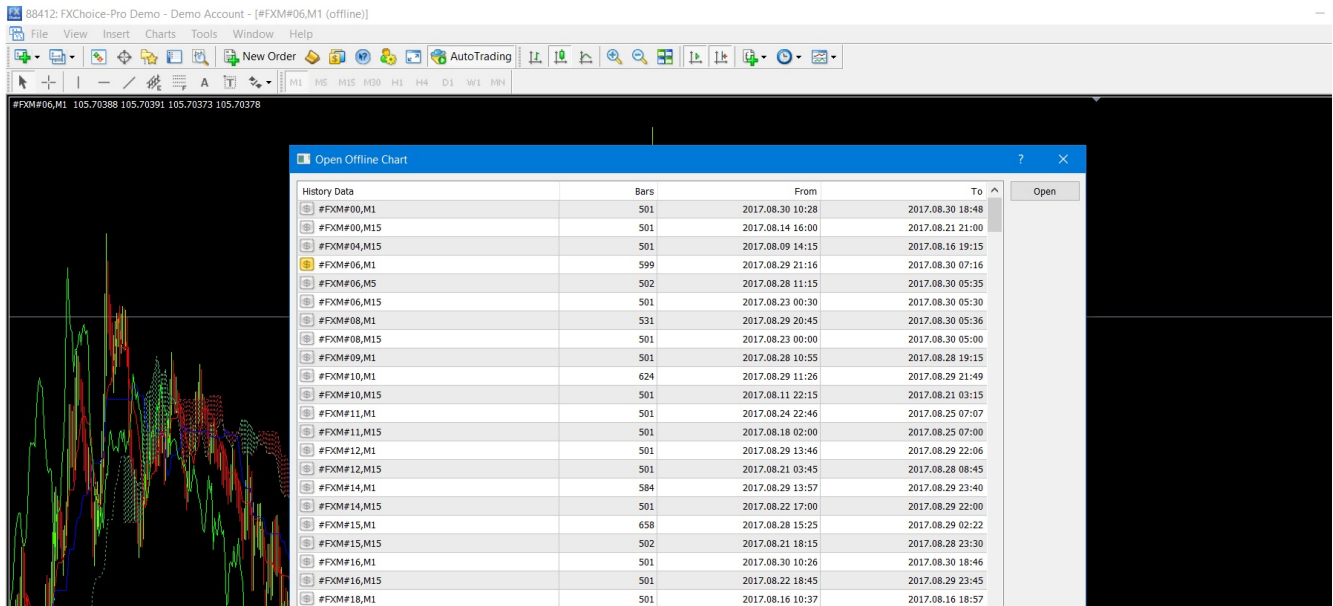


Figure 6

7. Voila, now you have an offline chart of your basket and can you whatever you want with it. You can place your favorite indicator on the chart and choose enter and exit for your basket.



Figure 7