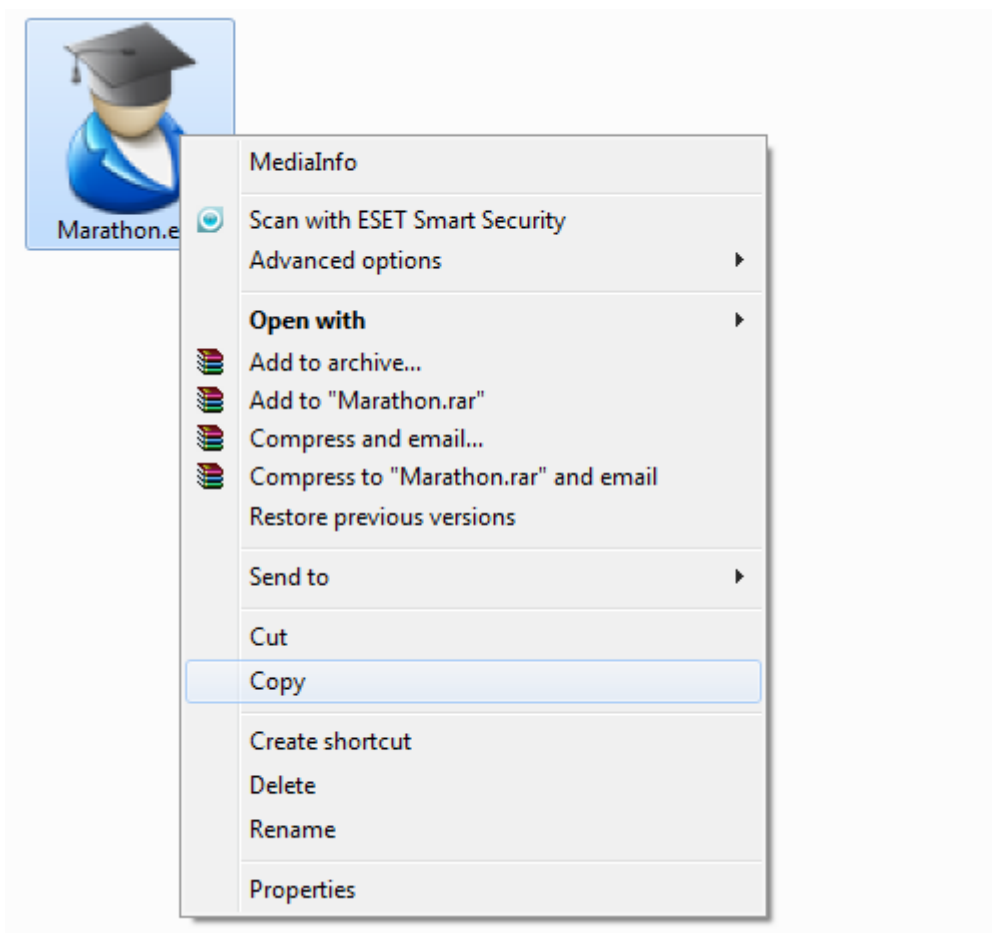


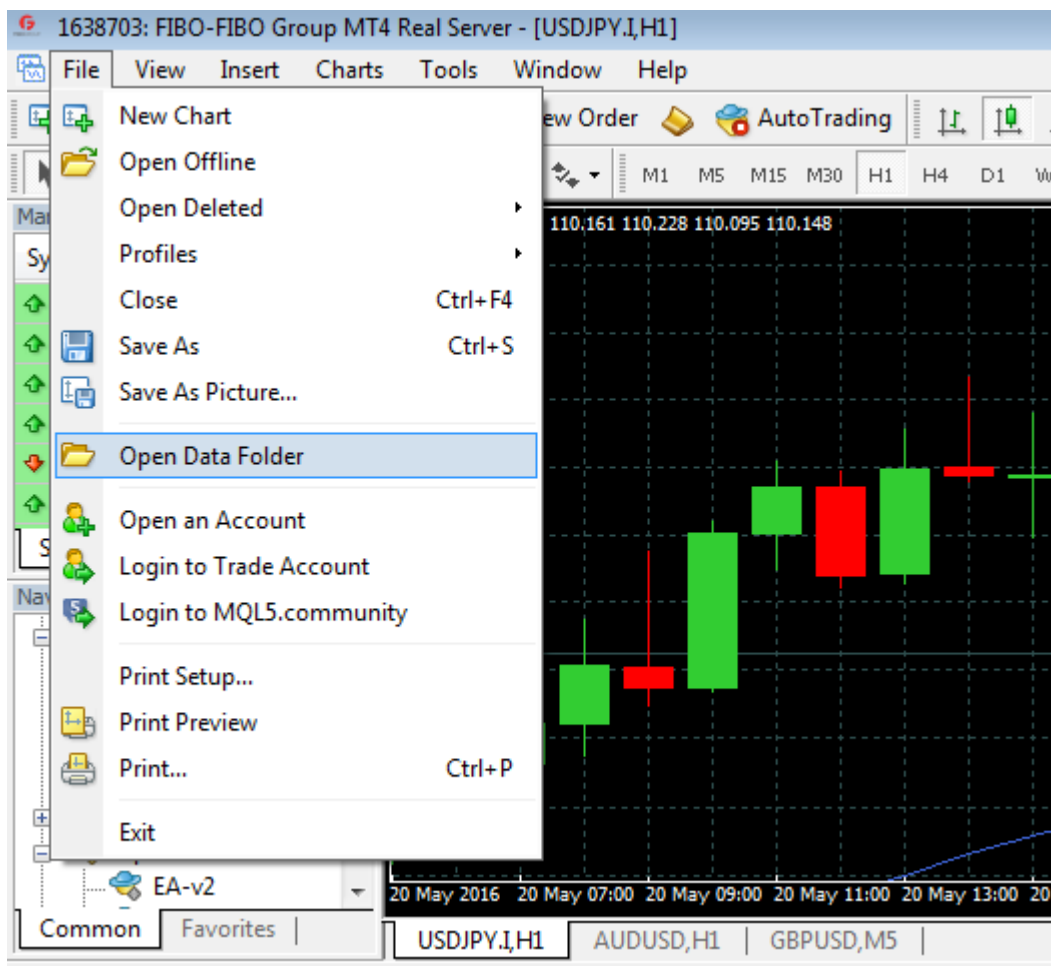
Marathon

Expert Advisor



Installation:





1638703: FIBO-FIBO Group MT4 Real Server - [USDJPY,I,H1]

File View Insert Charts Tools Window Help

New Order AutoTrading

Market Watch: 14:15:33

Symbol	Bid	Ask
USDC...	0.98...	0.98...
GBPU...	1.46...	1.46...
EURU...	1.12...	1.12...
USDJ...	109....	109....
USDC...	1.30...	1.30...
AUDU...	0.72...	0.72...
EURG...	0.76...	0.76...

Symbols Tick Chart

Navigator

- Accounts
 - FBS-Real-4
 - 4073195: Sc
 - FIBO-FIBO Gro
 - 1638703: SH
- Indicators
- Expert Advisors
 - EA-v2
 - EA2

Common Favorites

Expert Advisor

Computer > Local Disk (C:) > Program Files > FIBO Group >

Organize Open Include in library Share with Burn New

Favorites

- Recent Places
- Desktop
- Downloads
- Trade

Libraries

- Documents
- Pictures
- Videos

Homegroup

Computer

Local Disk (C:)

MQL4

config

history

logs

MQL4

profile

Sound

template

tester

DDE-Sample.xls

metaeditor.exe

metaviewer.dll

metaviewer64.dll

terminal.exe

terminal.ico

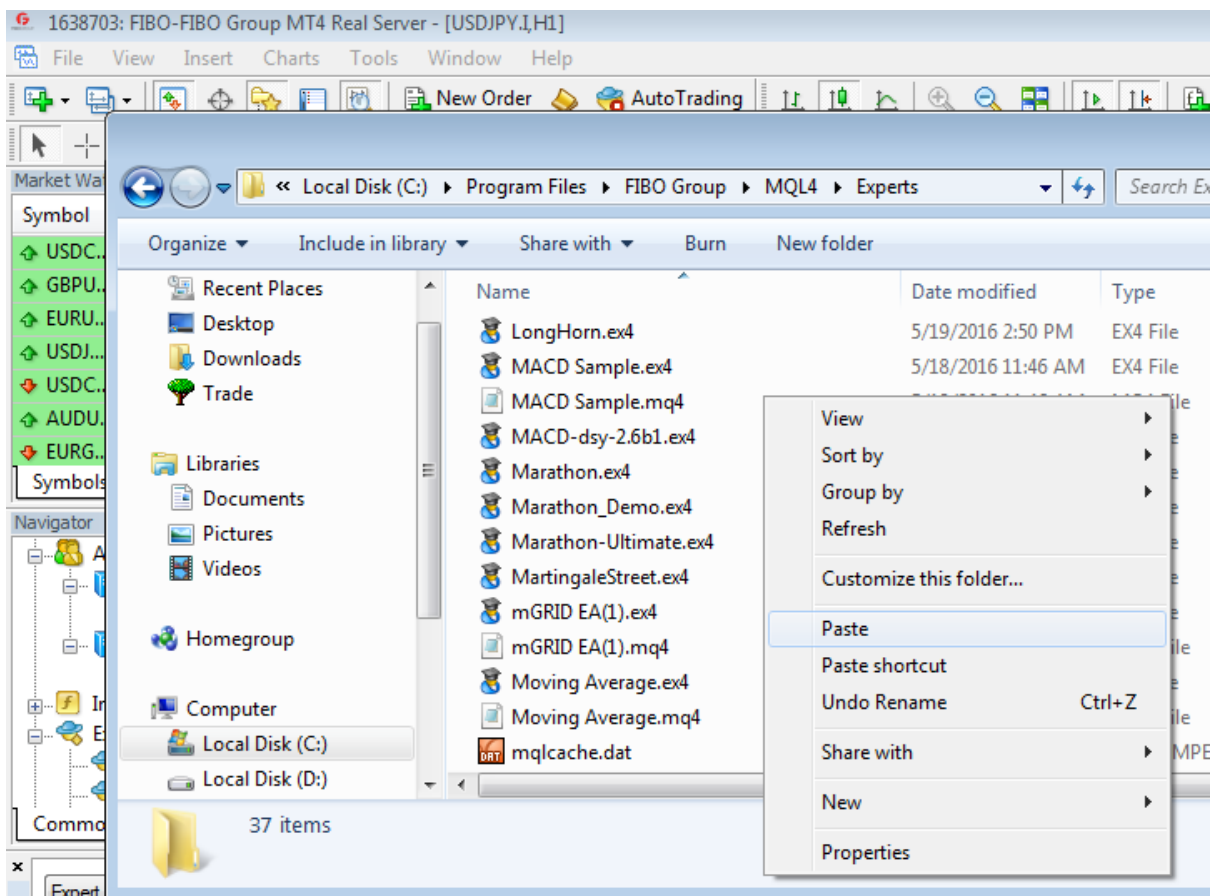
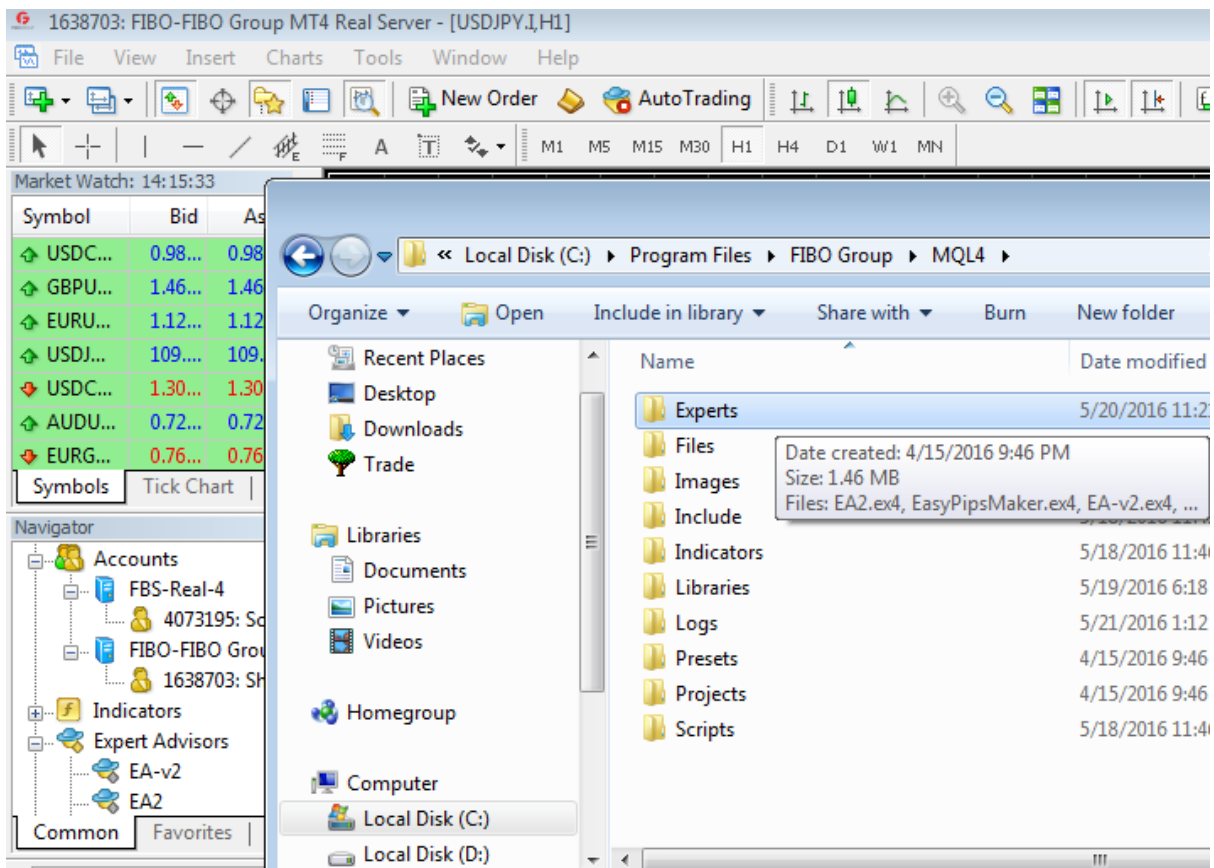
uninstall.exe

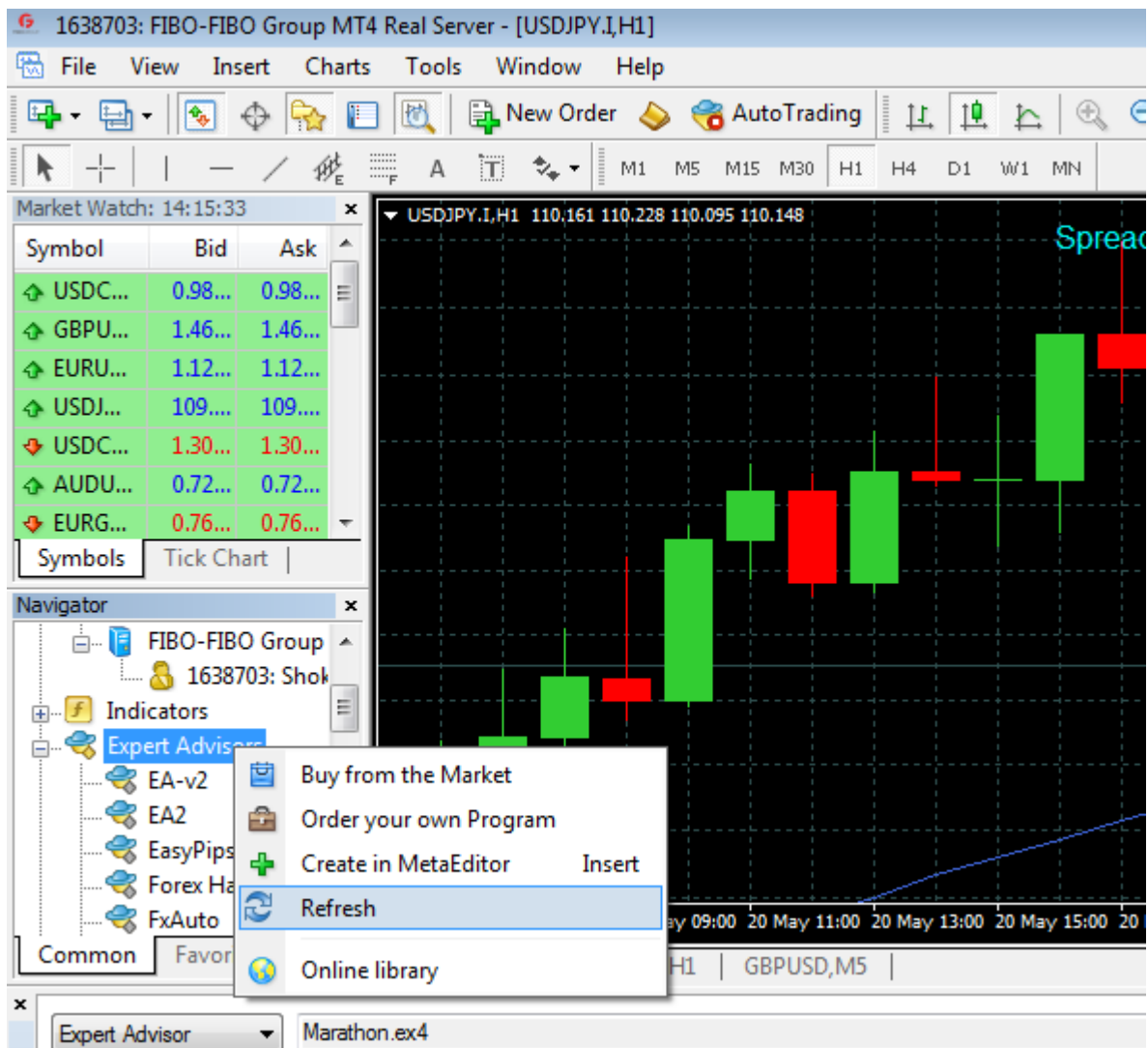
Date created: 4/15/2016 9:46 PM

Size: 3.82 MB

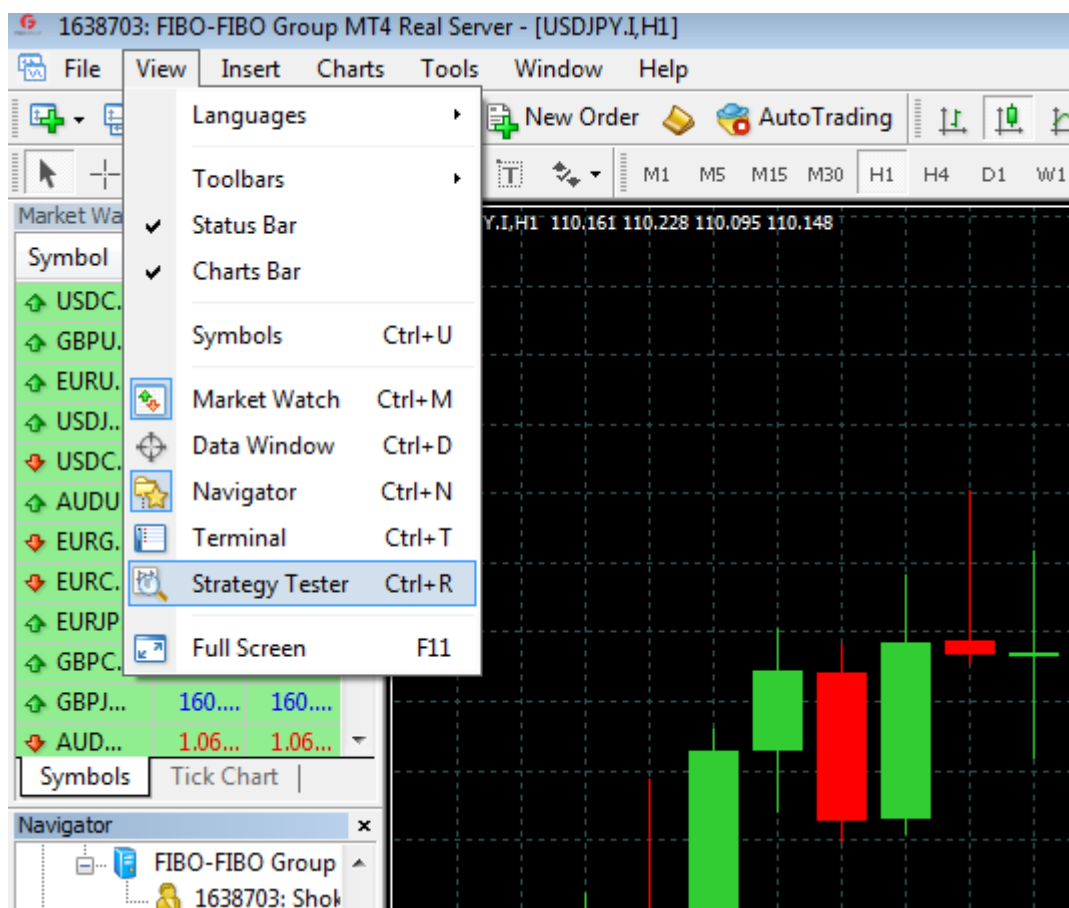
Folders: Experts, Files, Images, Include, Ind

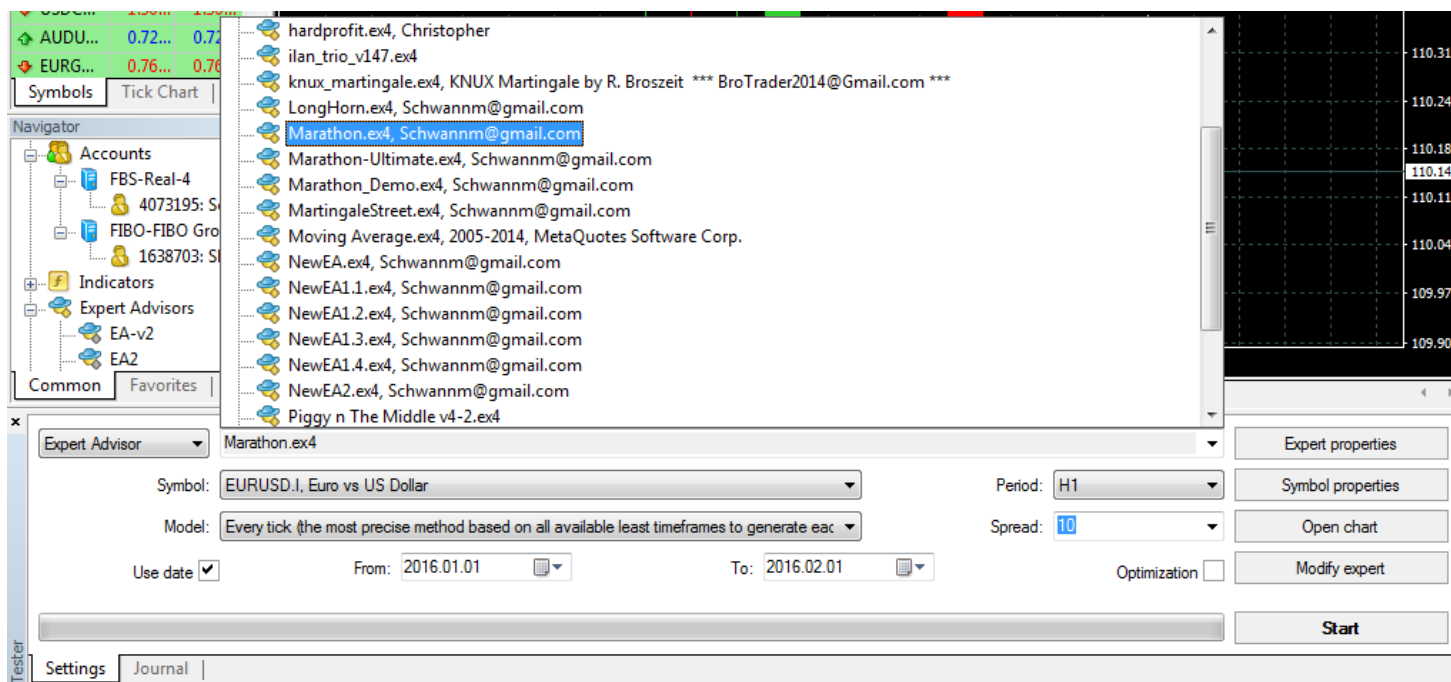
MQL4 Date modified: 5/18/2016 11:25 PM





Using The Strategy Tester:

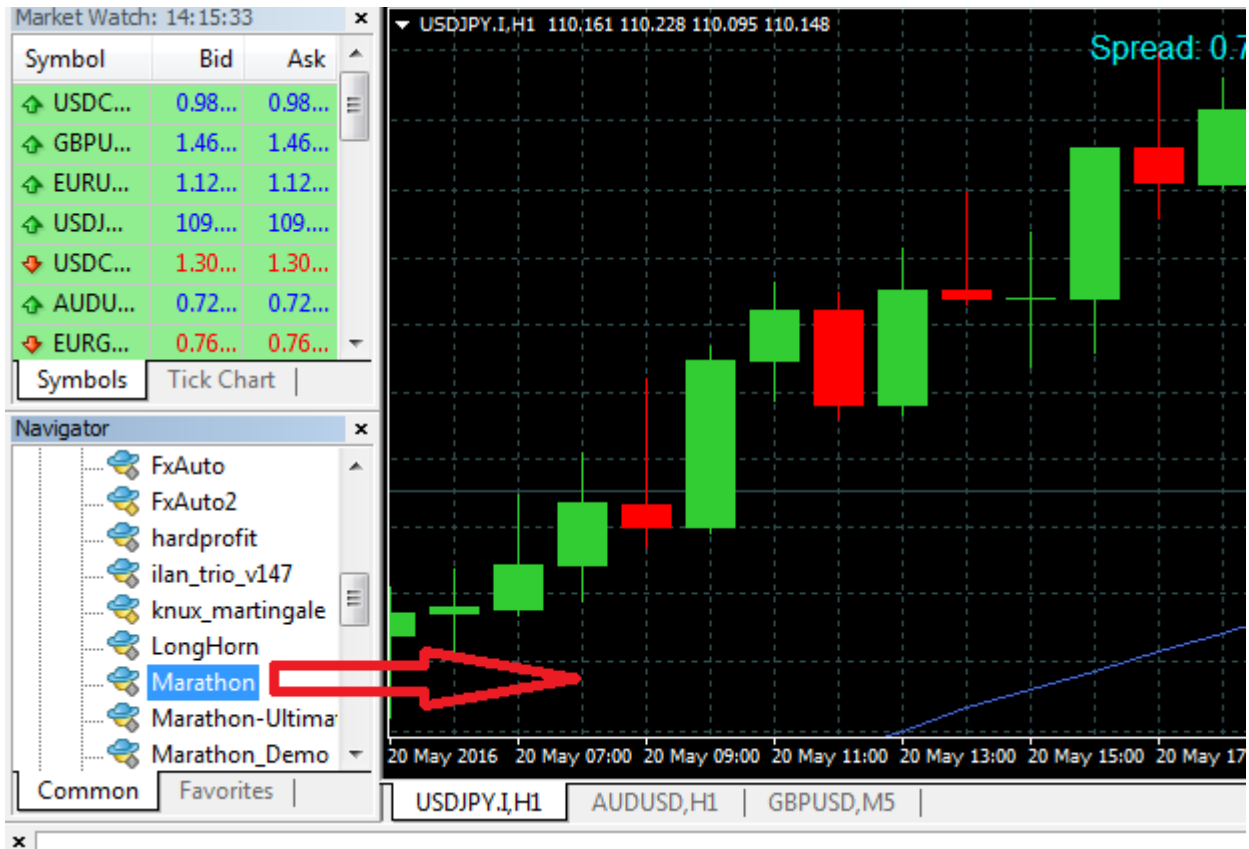




Attaching to the chart



Drag and Drop to the chart



Click OK, after configure your settings.

Expert - Marathon1.1

About Common Inputs

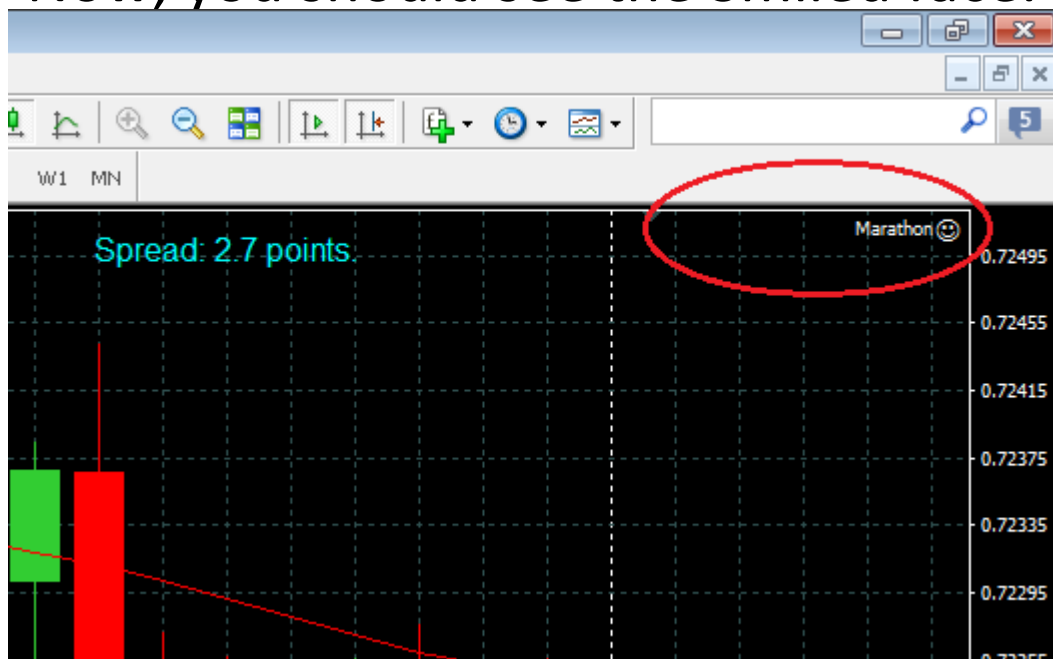
Variable	Value
Magic_Number	1
Strategy	DoubleConfirm
Buy_Sell_Trade_Once	false
Arima_Factor	5
Start_Lot	0.1
Lot_Multiplier	1.5
Range	25.0
Range_Multiplier	1.1
Take_Profit	25.0
TP_Multiplier	1.2
Use_TP_In_Money	false
TP_In_Money	10.0
Use_SL_In_Money	false
SL_In_Money	20.0
Max_Spread	3.0
Concurrent_Trading	false
BE_Level	4
Continue_Trading	true
Account_Money_Management	false
Account_Equity_TP	0.0
Account_Equity_SL	0.0

Load

Save

OK Cancel Reset

Now, you should see the Smiled face.



Setting fields:

Variable	Value
Magic_Number	1
Strategy	DoubleConfirm
Buy_Sell_Trade_Once	false
Arima_Factor	5
Start_Lot	0.1
Lot_Multiplier	1.5
Range	25.0
Range_Multiplier	1.1
Take_Profit	25.0
TP_Multiplier	1.2
Use_TP_In_Money	false
TP_In_Money	10.0
Use_SL_In_Money	false
SL_In_Money	20.0
Max_Spread	3.0
Concurrent_Trading	false
BE_Level	4
Continue_Trading	true
Account_Money_Management	false
Account_Equity_TP	0.0
Account_Equity_SL	0.0

Buttons: Load, Save, OK, Cancel, Reset

Magic_Number: if you want to attach the EA in more than one chart, you should set different number for each.

Strategy: Trading Strategy list. Each strategy has different results in different time frames, and higher time frames like H4 are safer.

Maybe some times you analysis the market and want to trade in a direction, there is a capability in the EA for doing that using strategy field:

Instant_Buy

Instant_Sell

Buy_Sell_Trade_Once: if you set it to true, when you select Instant_Buy or Instant_Sell in strategy field, After finishing the sequence, the EA doesn't open another trade again.

Arima_Factor: An effective factor when you use Arima strategy.

Start_Lot: the lot that the EA opens first trade with.

Lot_Multiplier: Multiplier number for next trades in the sequence.

range: amount of pips that EA opens another trade if previous trade goes in loss.

Range Multiplier: Acts like Lot_Multiplier, but for range.

Take Profit and TP_Multiplier.

* You can set Take_Profit field to 0.0 when you're using TP_In_Money .

You can apply the EA for trading with a stop loss, or just trade martingale with TP in Money.

OR:

You can consider like that: I want to risk \$50 to gain \$10 trading long martingale!

Use_TP_In_Money: If EA uses TP_In_Money .

TP_In_Money: TP in money.

Use_SL_In_Money and SL_In_Money: As above for SL.

Max_Spread: if spread become more than this field's value, obviously the EA won't open trades. (Using this field is necessary, Sometimes spreads may become even bigger than range, if we you don't use this field, the EA continue taking trades until blowing your account)

Concurrent_Trading: it checks for open trades and only allows one at a time when false. Since each instrument may only make a several trades a week, You can trade several at the same time to greatly increase your profits.

BE_Level: example if you set it to 4, the EA after opening 4 trades it close all trades in breakeven. That is a useful ability.

Continue_Trading: If the EA continue trading. If there are open trades, it takes effect after finishing current sequence.

Account_Money_Management: Disable/Enables next two fields.

Account_Equity_TP, Account_Equity_SL: All open orders will close when reaches to TP/SL.

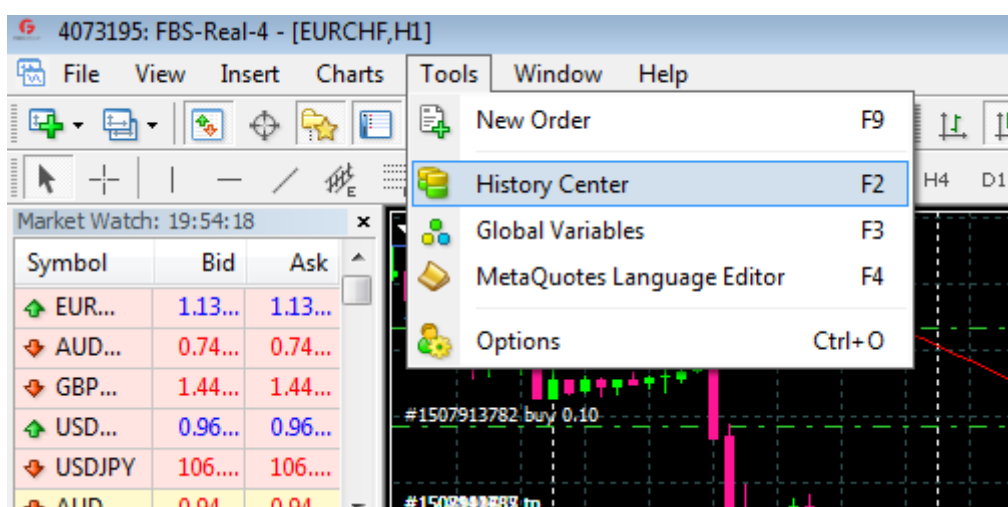
Note: Please pay attention to the journal tab when back testing. Sometimes you see the error below:

Time	Message
2016.06.09 21:14:26.294	TestGenerator: no history data 'GBPNZD60' from 2016.06.02
2016.06.09 21:14:24.252	Expert Marathon-4073195 GBPNZD,H1: loaded successfully
2016.06.09 21:14:24.232	Expert Marathon-4073195 GBPNZD,H1: removed
2016.06.09 21:14:05.613	Tester: stop button pressed
2016.06.09 21:14:05.560	History: download GBPNZD,M1 [2016.06.01 00:57]
2016.06.09 21:14:04.060	History: download GBPNZD,M1 [2016.06.01 09:29]
2016.06.09 21:14:03.060	History: download GBPNZD,M1 [2016.06.01 18:01]
2016.06.09 21:14:01.558	History: download GBPNZD,M1 [2016.06.02 02:36]

Tester

Settings | Results | Graph | Report | **Journal**

To fix the message No history data, you need to download history for the pair as below:



History Center: NZDUSD,H1

Database: 65000 / 103251 records

Time	Open	High	Low	Close	Volume
2016.06.09 19:00	0.71327	0.71337	0.71213	0.71240	2222
2016.06.09 18:00	0.71361	0.71410	0.71271	0.71328	6543
2016.06.09 17:00	0.71385	0.71416	0.71188	0.71363	8778
2016.06.09 16:00	0.71163	0.71417	0.71065	0.71380	8756
2016.06.09 15:00	0.71063	0.71193	0.71041	0.71153	6184
2016.06.09 14:00	0.71063	0.71084	0.70961	0.71065	4958
2016.06.09 13:00	0.71049	0.71062	0.70910	0.71061	5072
2016.06.09 12:00	0.71260	0.71264	0.71035	0.71048	4613
2016.06.09 11:00	0.71162	0.71323	0.71159	0.71252	6440
2016.06.09 10:00	0.71420	0.71420	0.71063	0.71171	7806
2016.06.09 09:00	0.71316	0.71475	0.71266	0.71421	4708
2016.06.09 08:00	0.71368	0.71404	0.71300	0.71315	3006
2016.06.09 07:00	0.71319	0.71476	0.71306	0.71377	4144
2016.06.09 06:00	0.71199	0.71335	0.71160	0.71315	2967
2016.06.09 05:00	0.71202	0.71257	0.71130	0.71201	3244
2016.06.09 04:00	0.71150	0.71291	0.71022	0.71194	5699
2016.06.09 03:00	0.71213	0.71382	0.71131	0.71151	4945

Download Add Edit Delete Export Import Close

Click close button after finished. Then click "Start" button in strategy tester.

-If you decide to use your own settings, It's highly recommended that before attaching the EA to the chart, take a back test for a long enough period.

- Please note that it may take an almost long times to EA to open trade, please be patient because do not losing money is better than over trade and empty your account!

-Control your greed and have a reasonable expectation to survive in the market for a long time...

- Try to get used to working with the strategy tester.

Contact:

Schwannm@gmail.com