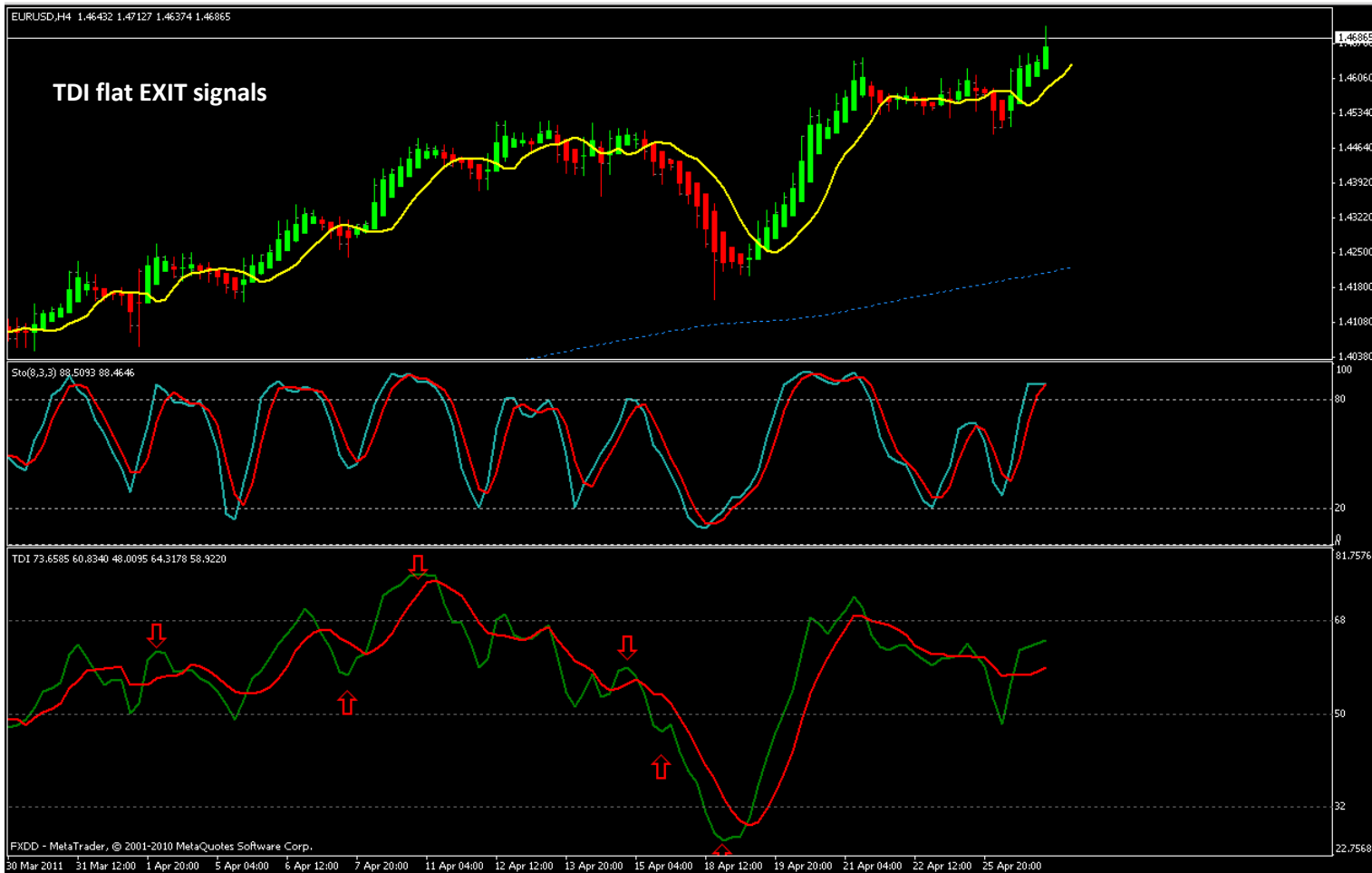
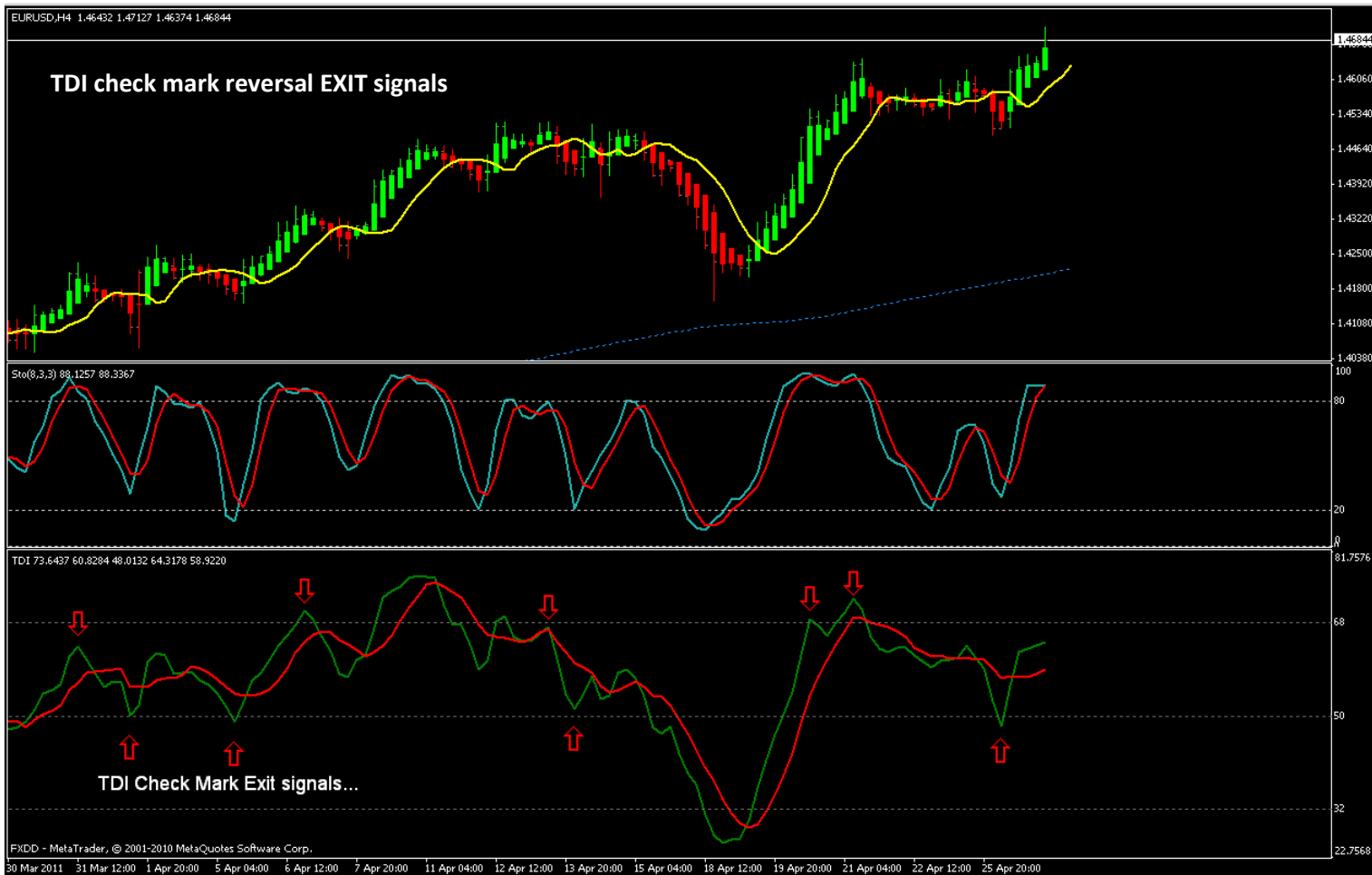


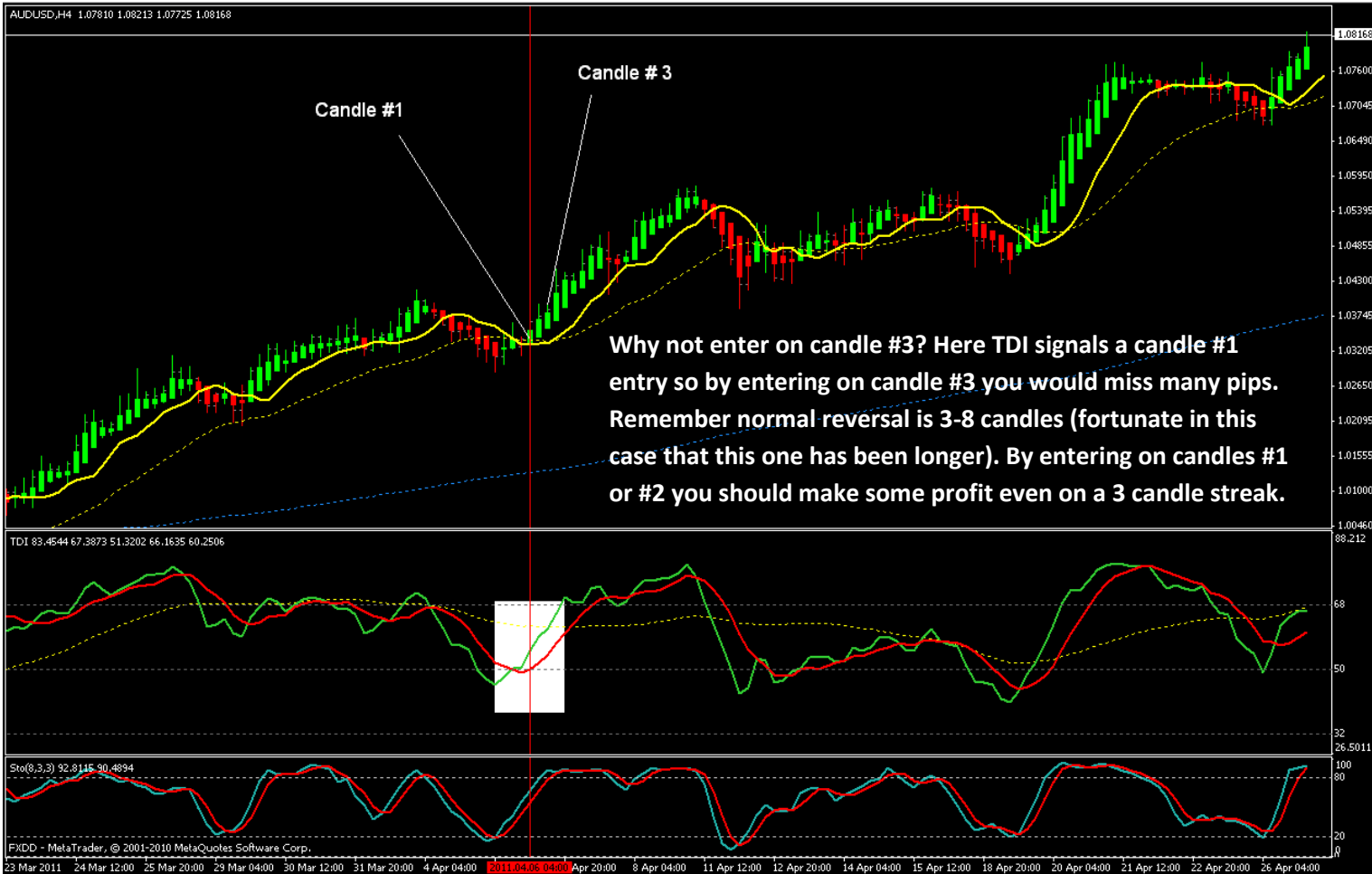
Eelfranz Training Charts – TMS Thread

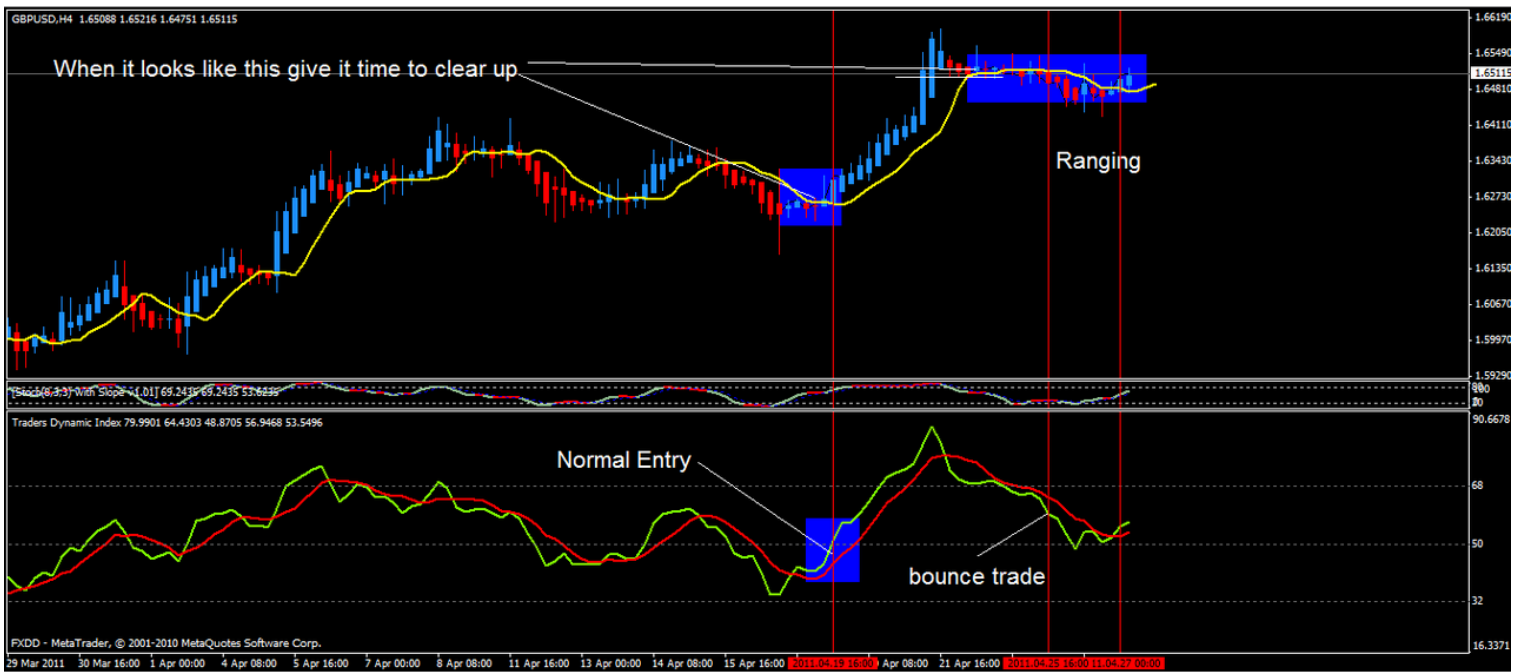
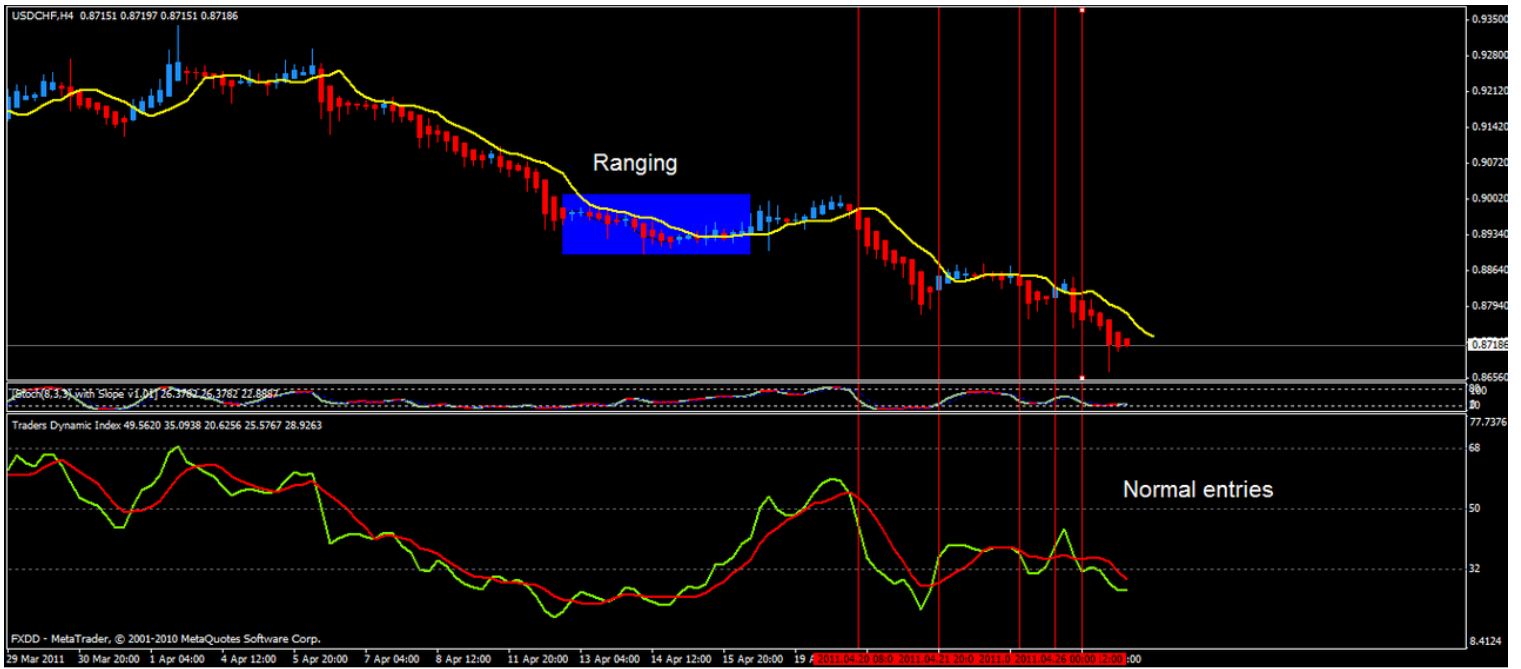














GBPUSD,H4 1.67193 1.67267 1.67148 1.67158

One regular entry, a re-entry and now sits
way above the TDI 68 line... watch closely!

[Stoch(8,3,3) with Slope 1,01] 93.4783 99.5491

Traders Dynamic Index 82.5865 66.3546 50.1226 79.3883 71.9721

FXDD - MetaTrader, © 2001-2010 MetaQuotes Software Corp.

30 Mar 2011 31 Mar 20:00 4 Apr 04:00 5 Apr 12:00 6 Apr 20:00 8 Apr 04:00 11 Apr 12:00 12 Apr 20:00 14 Apr 04:00 15 Apr 12:00 18 Apr 20:00 20 Apr 04:00 21 Apr 12:00 22 Apr 20:00 2011.04.22 20:00

AUDUSD,H4 1.09320 1.09357 1.09244 1.09247

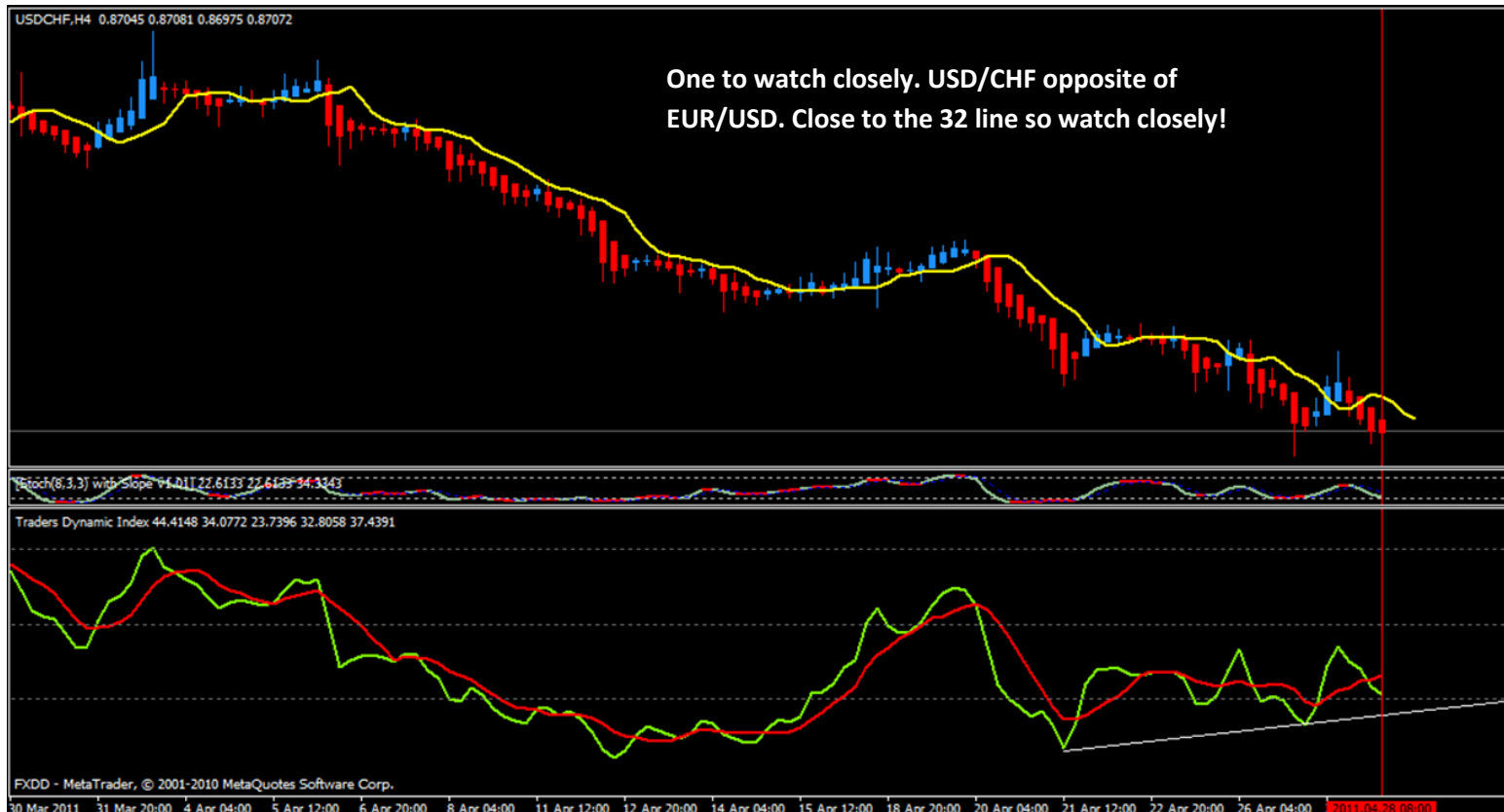
The three amigo's (two other charts above) all look very similar. Two
entry points, way above the 68 line and like the other two getting
ready to turn...probably in the next 4-8 hours.

[Stoch(8,3,3) with Slope 1,01] 93.4783 99.5491

Traders Dynamic Index 83.7097 70.0114 56.3132 78.4023 73.0455

FXDD - MetaTrader, © 2001-2010 MetaQuotes Software Corp.

30 Mar 2011 31 Mar 20:00 4 Apr 04:00 5 Apr 12:00 6 Apr 20:00 8 Apr 04:00 11 Apr 12:00 12 Apr 20:00 14 Apr 04:00 15 Apr 12:00 18 Apr 20:00 20 Apr 04:00 21 Apr 12:00 22 Apr 20:00 2011.04.22 12:00 2011.04.23 00:00





EURJPY,Daily 121.446 121.817 121.083 121.152

Daily chart, missed best
entry (candle #1 or #2)

TDI 76.6922 59.3153 41.9383 61.6367 56.1578

[Stoch(8,3,3) with Slope v1.01] 81.5565 81.5565 69.0271

FXDD - MetaTrader, © 2001-2010 MetaQuotes Software Corp.

EURJPY,H4 121.439 121.451 121.083 121.264

Entry short. TDI hasn't crossed
yet but stoch confirms...

TDI 68.7064 54.5140 40.3216 68.0142 68.7156

[Stoch(8,3,3) with Slope v1.01] 87.0076 87.0076 92.7763

FXDD - MetaTrader, © 2001-2010 MetaQuotes Software Corp.



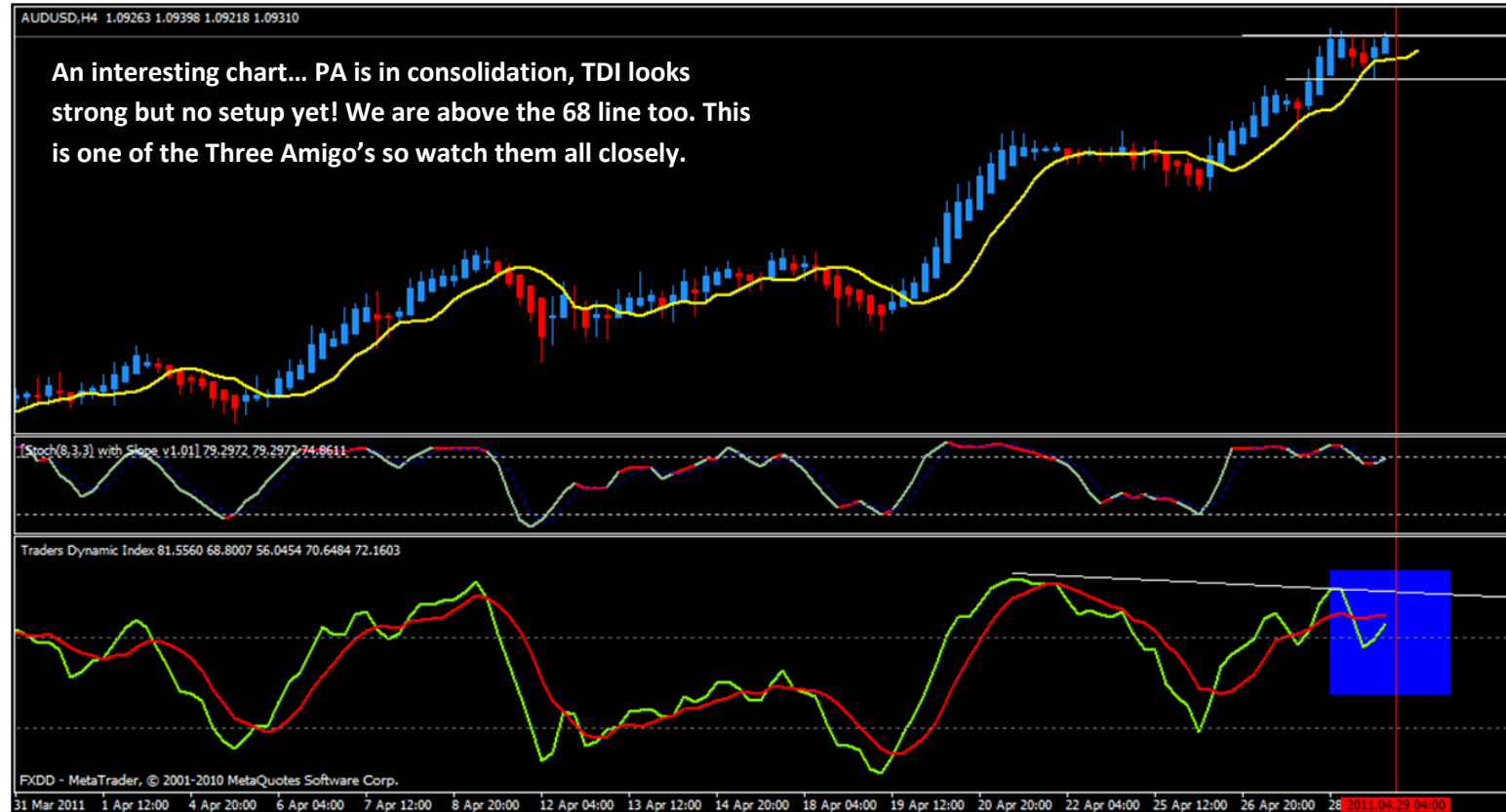
GBPUSD,H4 1.66295 1.66471 1.66246 1.66455

Nothing of interest... TDI green is flat so a no go right now



AUDUSD,H4 1.09263 1.09398 1.09218 1.09310

An interesting chart... PA is in consolidation, TDI looks strong but no setup yet! We are above the 68 line too. This is one of the Three Amigo's so watch them all closely.



USDCHF,H4 0.87345 0.87363 0.87262 0.87290

No go chart! PA and TDI are both flat!

[Stoch(8,3,3) with Slope v1.01] 33.4509 31.2431

Traders Dynamic Index 45.3427 35.7754 26.2081 40.4247 37.9589

FXDD - MetaTrader, © 2001-2010 MetaQuotes Software Corp.

31 Mar 2011 1 Apr 12:00 4 Apr 20:00 6 Apr 04:00 7 Apr 12:00 8 Apr 20:00 12 Apr 04:00 13 Apr 12:00 14 Apr 20:00 18 Apr 04:00 19 Apr 12:00 20 Apr 20:00 22 Apr 04:00 25 Apr 12:00 26 Apr 20:00 28 Apr 04:00

USDJPY,H4 81.515 81.639 81.488 81.560

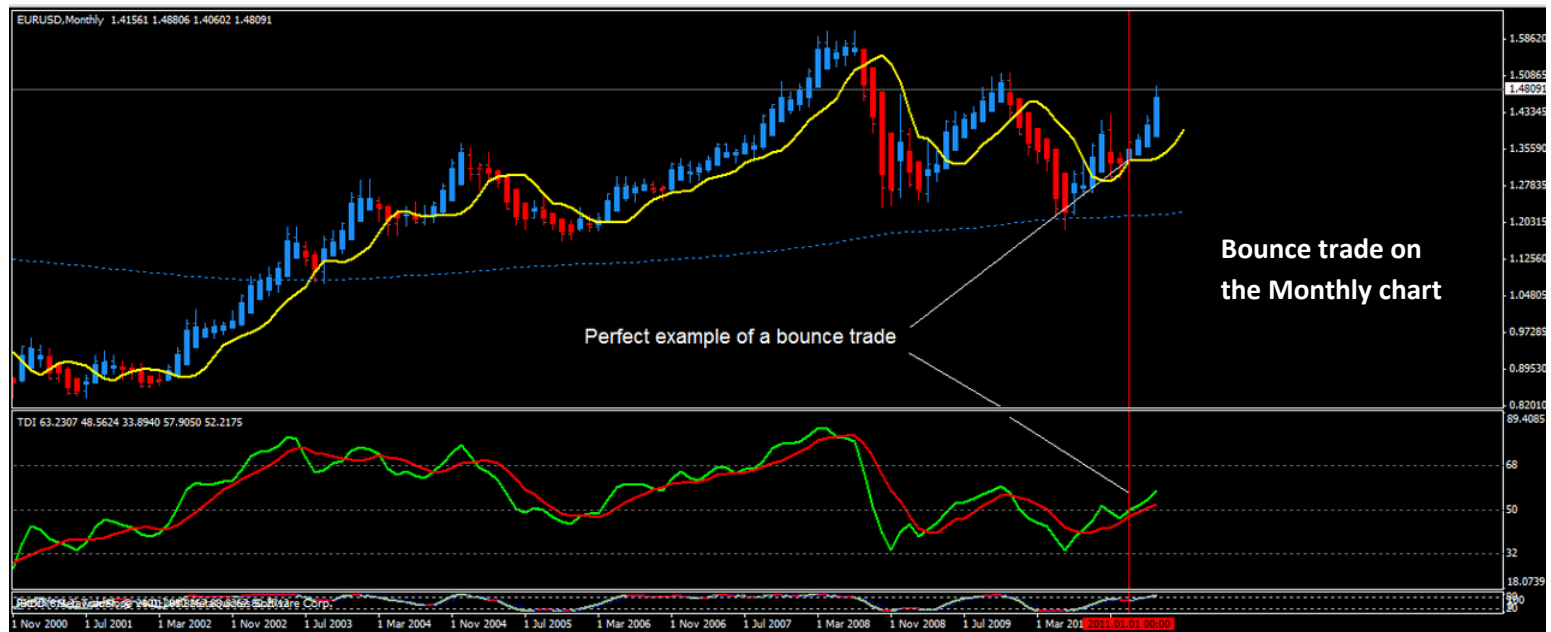
Another no go chart! PA and TDI are both flat!

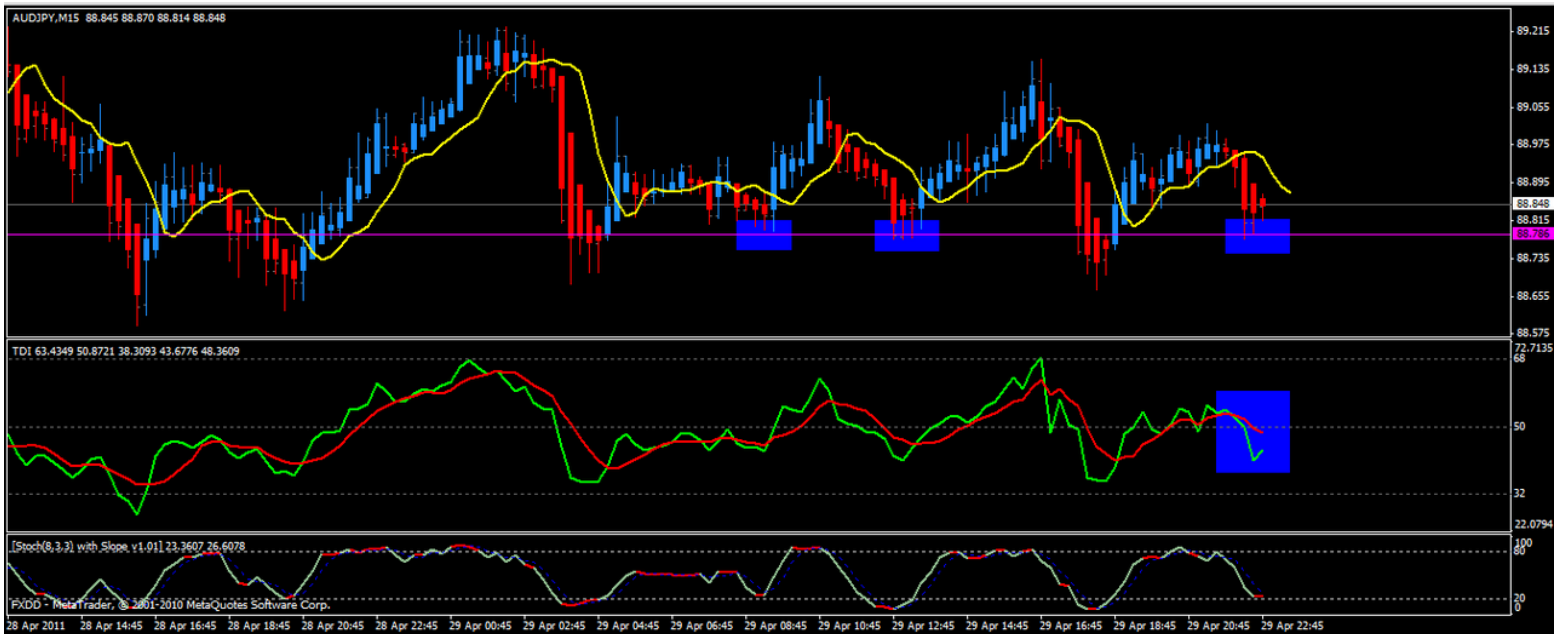
[Stoch(8,3,3) with Slope v1.01] 12.1577 10.8011

Traders Dynamic Index 53.3106 39.3846 25.4586 40.3764 42.5212

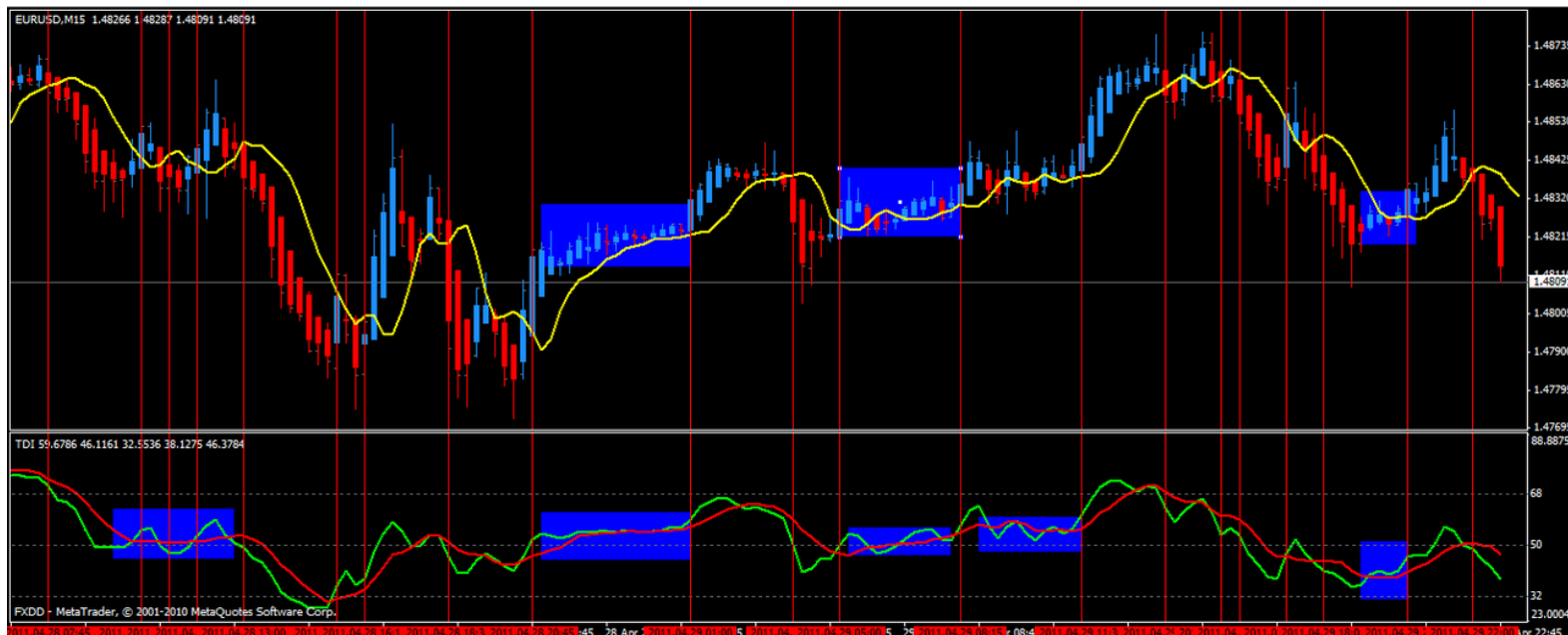
FXDD - MetaTrader, © 2001-2010 MetaQuotes Software Corp.

31 Mar 2011 1 Apr 12:00 4 Apr 20:00 6 Apr 04:00 7 Apr 12:00 8 Apr 20:00 12 Apr 04:00 13 Apr 12:00 14 Apr 20:00 18 Apr 04:00 19 Apr 12:00 20 Apr 20:00 22 Apr 04:00 25 Apr 12:00 26 Apr 20:00 28 Apr 04:00





On this short trade, the first candle is tiny, and the second is not much better. The TDI is at 4 O'clock but on the next candle it drops to 5 O'clock. TDI looks good with stochs confirming. However, look at the large lower wick on the third candle! (Indicates a short-lived trade) Followed by the same on the following candle! Look left... the PA has hit the major support level! Exit immediately! Read the candles as well as the TDI.



On this 15 minute chart there are 21 trades... pretty much all winners! You would have to pay very close attention though on the 15 minute chart. 4hr and 1hr charts give you more time to react and get out with a profit. The blue boxes on the chart indicate areas to avoid! When these appear go to another pair to find a clean entry! Do not trade small candles... wait for them to open up! If the 5ema or green TDI are flat there is little or no momentum.

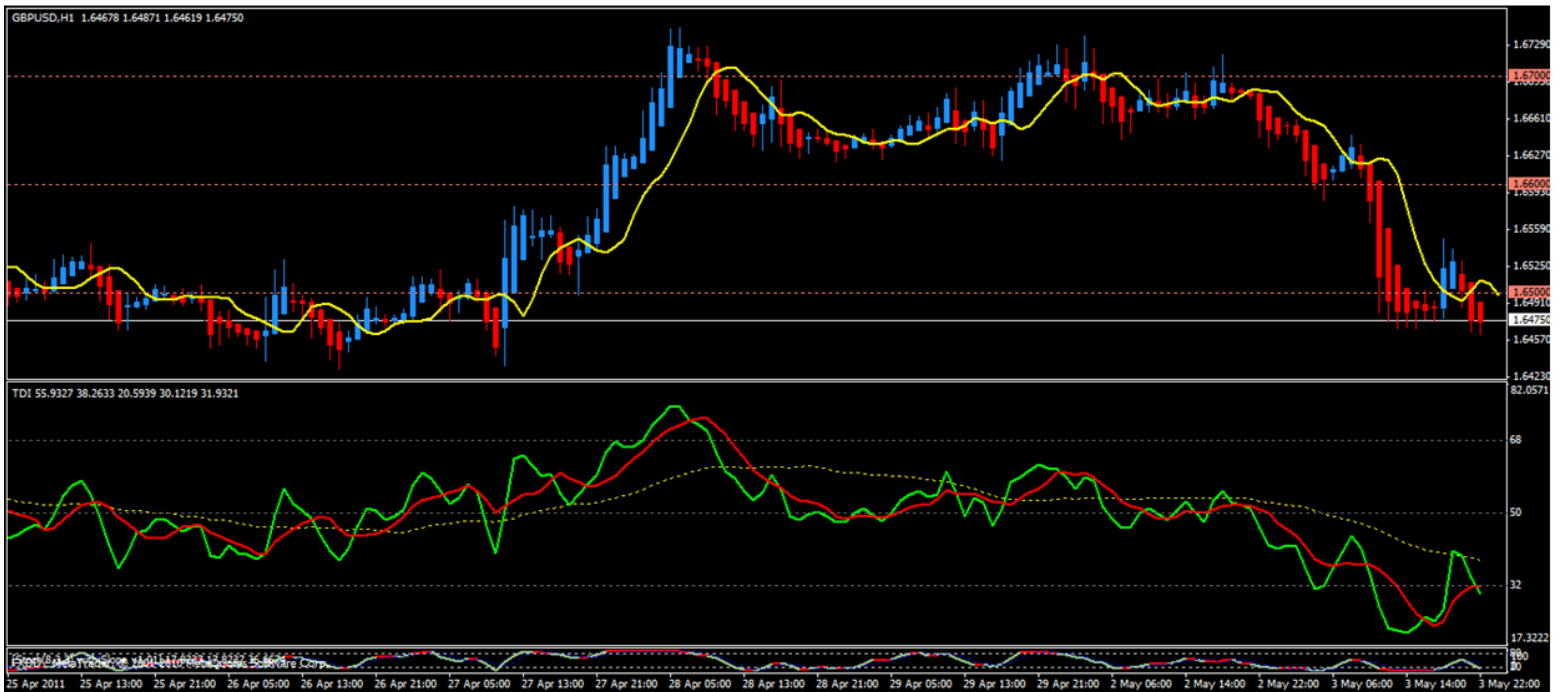


The system is not 100% accurate and trends don't always follow the entry signals. On this chart the candle before the red line is a valid long entry. However, price plummets after this! On the candle highlighted by the red line, the TDI does not tell much but the candles do. Once this candle appeared red and pulling back this is an exit signal. Also the 5ema is flat. The next TDI signal is the following long.



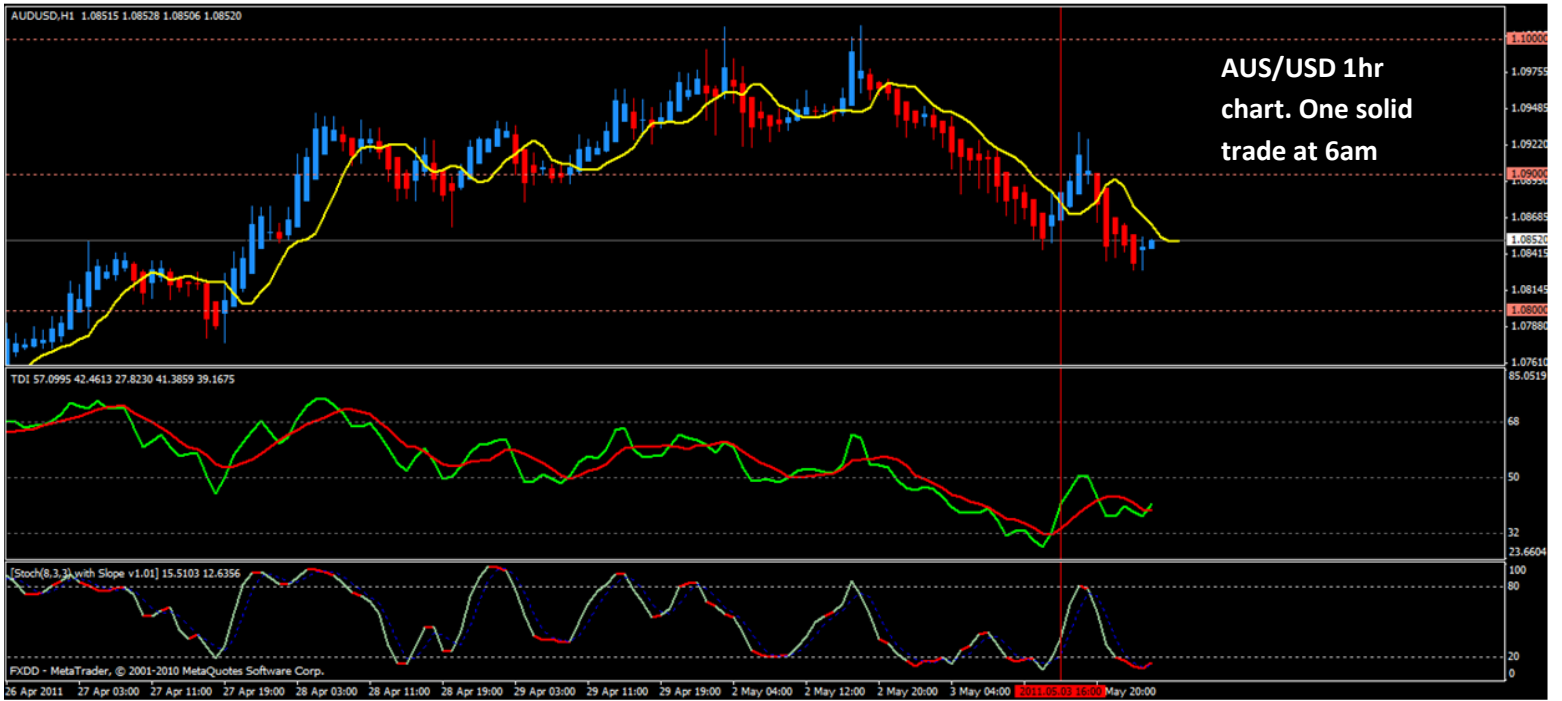
Bounce trade example off candle #1. When the last trade is separated by a candle of the opposing colour, the counting starts over again... looking for a set up trade off the new candle #1 or #2 even if it's a bounce trade.

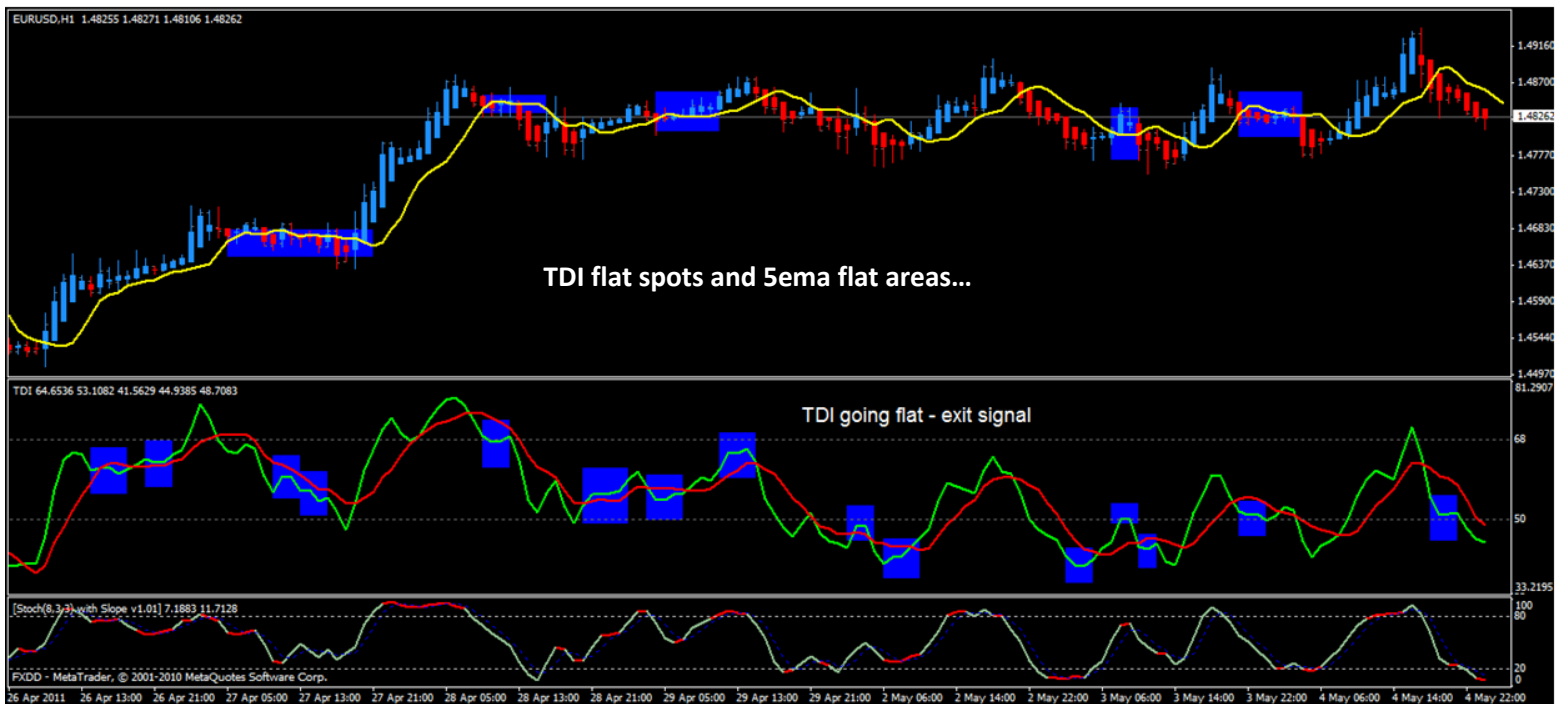
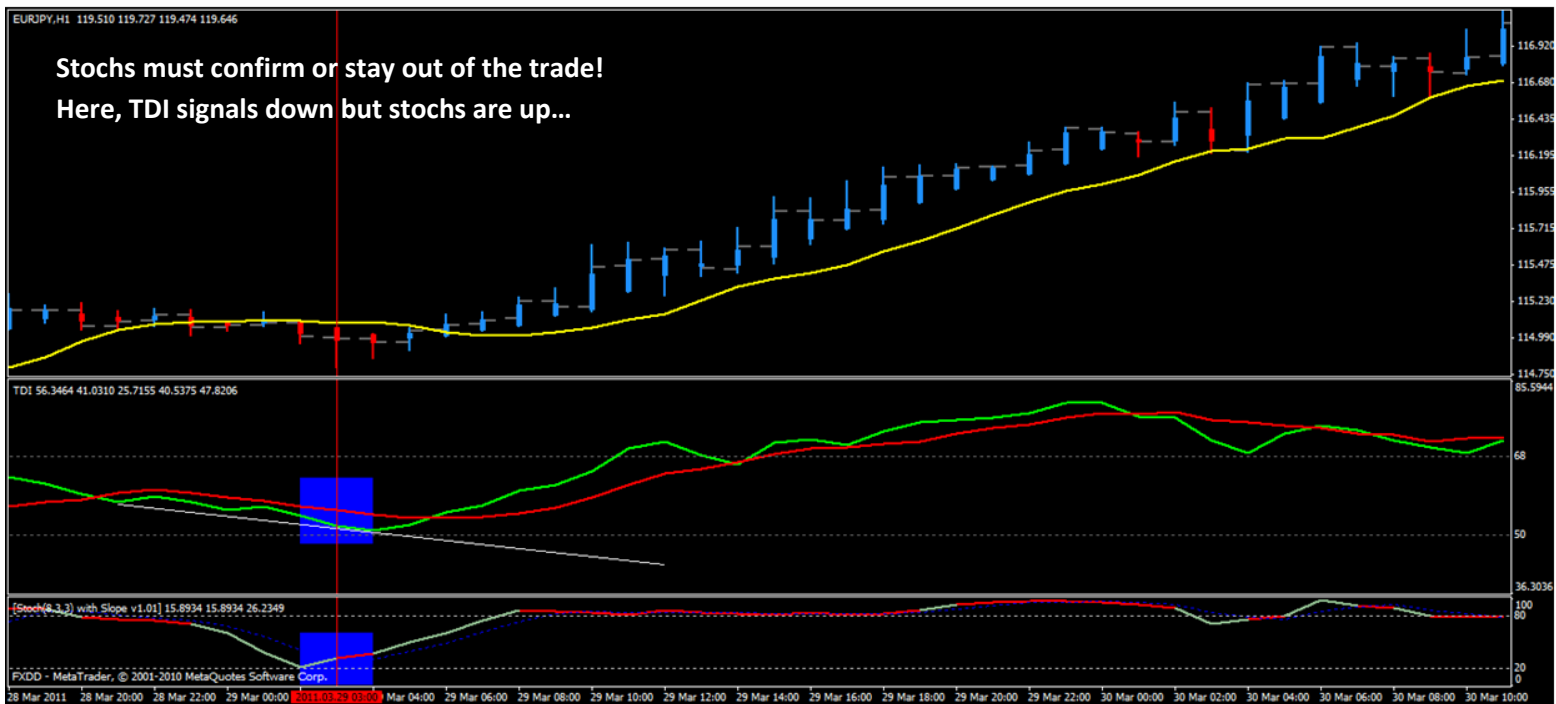


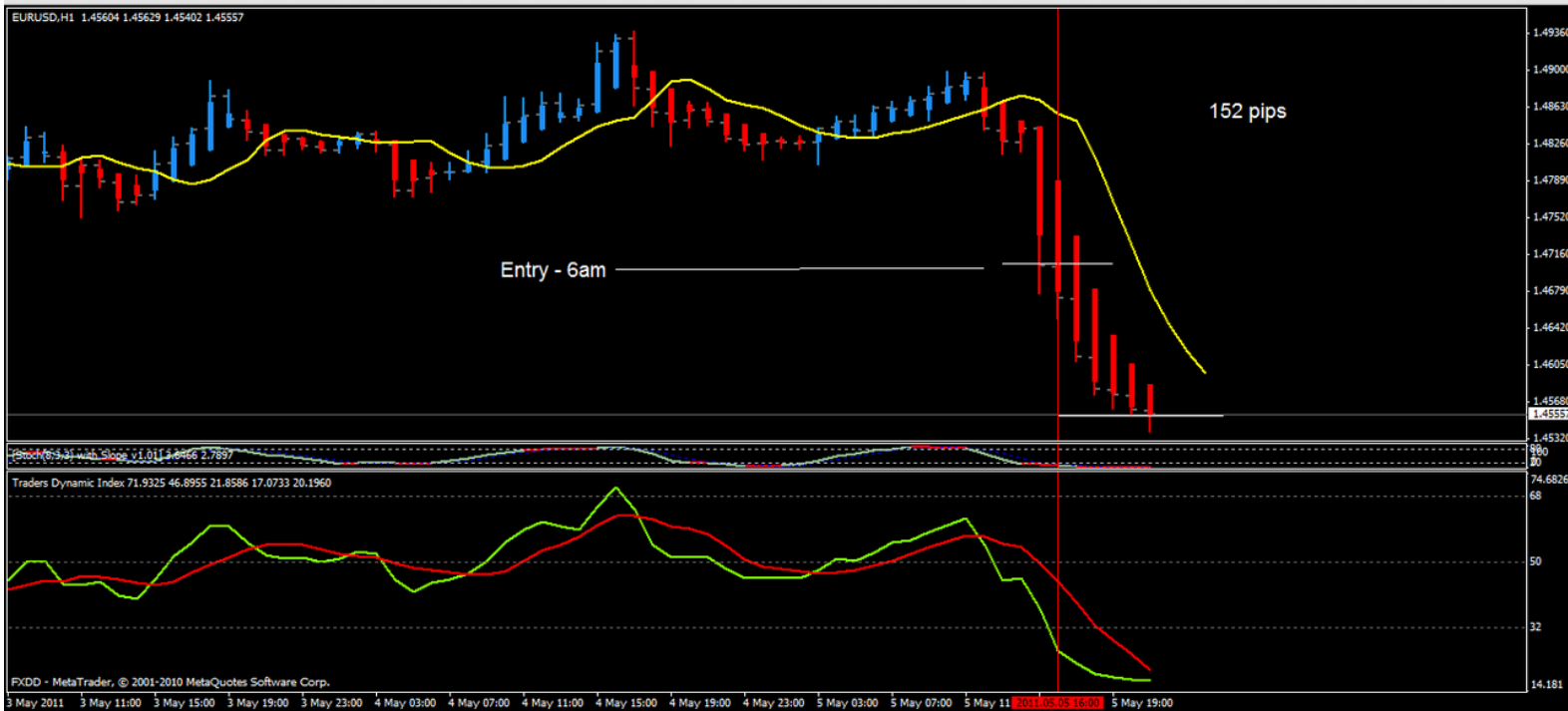
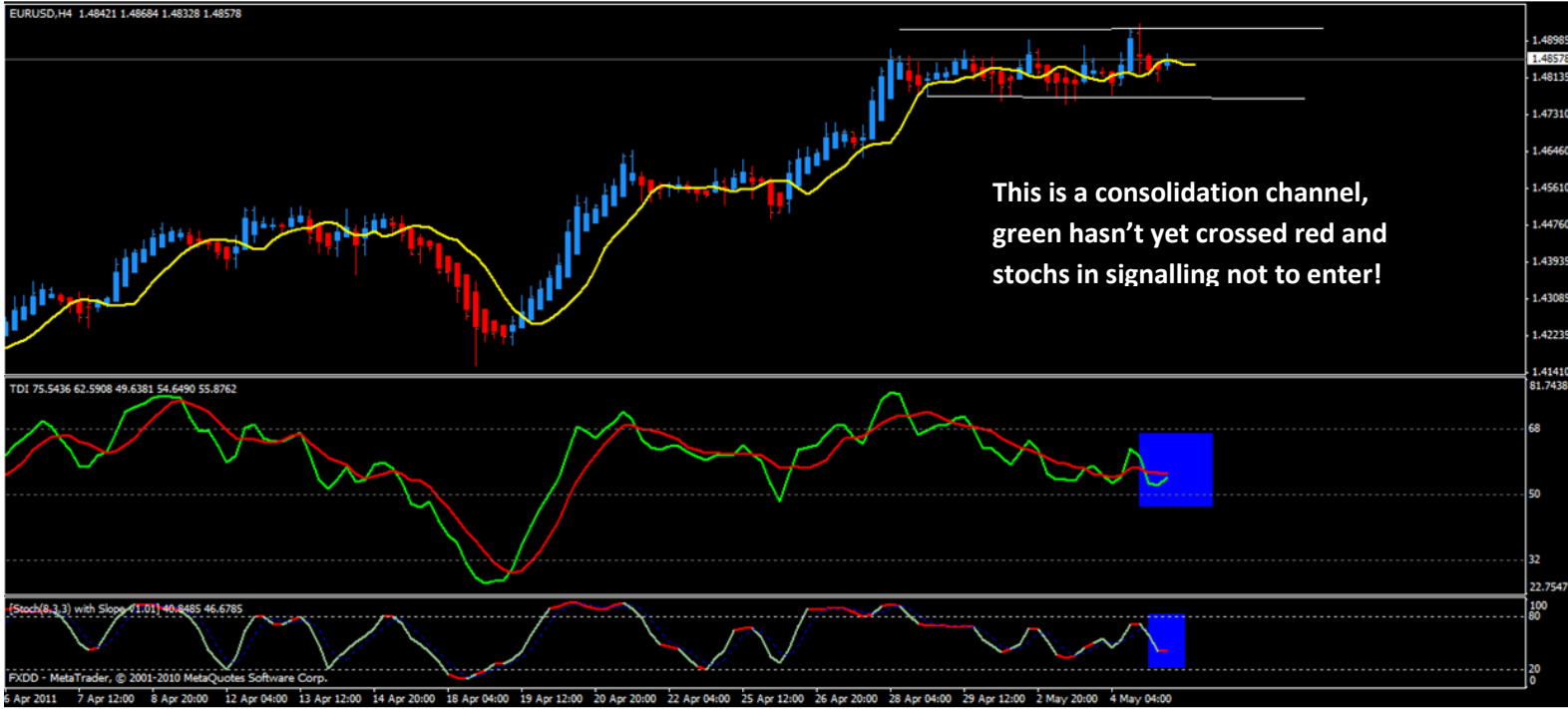


“Grid 10” indicator showing 100 lines which draw in PA like magnets.

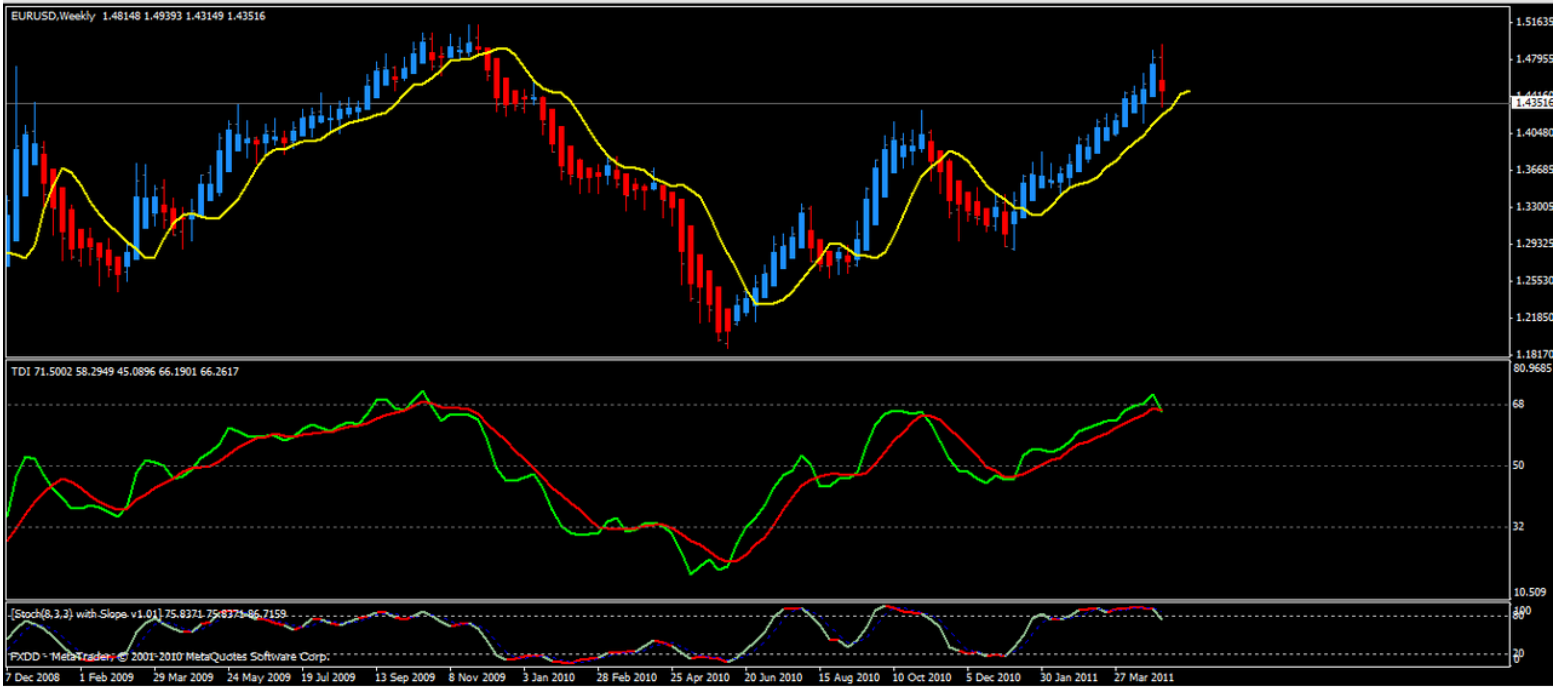












Long term chart. Green has barely crossed red line. Wait for the next candle before entering to see where green goes!



Eelfranz entered this trade on the weekly timeframe placing the SL at the top of the previous candle, about 150 pips away. Nice 5 O'clock green TDI line with stoch's confirmation.

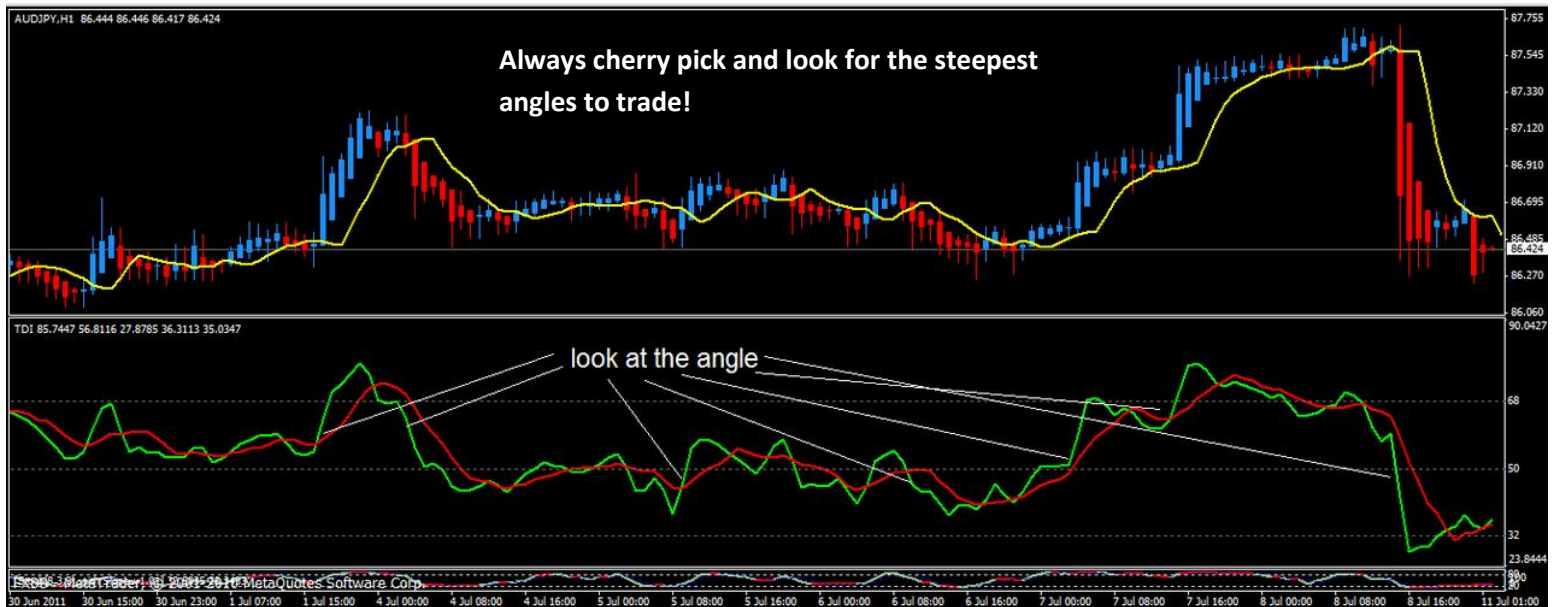
He later exited for 21 pips profit. Not much action for 2 days... best to exit in that case!



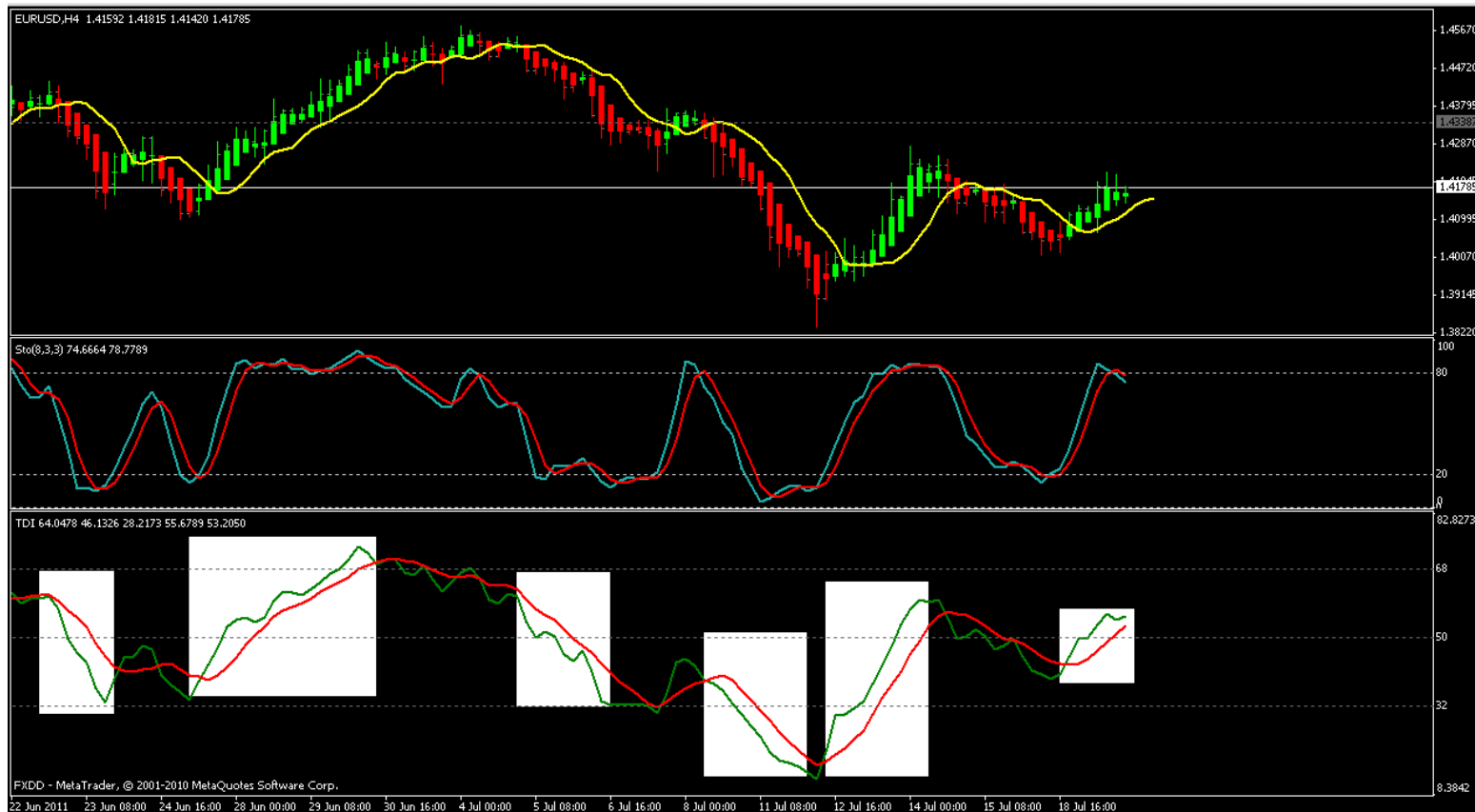




According to rules, exit when TDI green goes flat, reverses or hooks over... this is for the conservative trade and works well. However, see in the blue box the green line arches and crawls up the red without crossing. You could have stayed in until the cross.







When green crosses red on the 4hr chart it arcs and wiggles above or below (see white boxes on chart). You can stay in the trade until it crosses red again and pull down 200-400 pips on the longer runs.



