



A research production of Henry KH ANG.

HA Research

CURRENCY FUNDAMENTAL QUANTIFIED.



CURRENCY REPORT.

All materials provided in this report should not constitute to any direct or indirect trading signals or decisions. Information provided should only be available to subscribed personnel of HA Research.



CONTACTS:

Henry KH ANG
Henry.KH.Ang@live.com

Singapore

SUBSCRIPTION:

To subscribe to the FREE daily currency report of your choice. [Click Here.](#)

(Currency available: AUD, NZD, CAD, CNY, USD, JPY, GBP, EUR and All Currencies Summary)



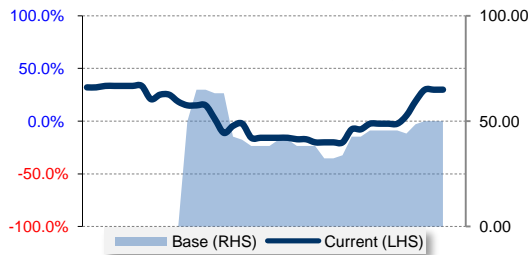


CANADA ECONOMY

In a glance.

20-Nov-2013 (Wednesday)

Last Updated: 09:02AM (GMT+0800)

**Figure 1: Fundamental Strength Index for last 40 days.****CANADA** (40 Days Fundamental Strength)

* HOW TO USE THESE? - see footnote on Fundamental Strengths.

BASE SUMMARY:

INFLATION INDICATORS :	11.8	/ 23.5
GROWTH INDICATORS :	14.7	/ 47.1
EMPLOYMENT INDICATORS :	11.8	/ 11.8
HOUSING INDICATORS :	5.9	/ 11.8
BUSINESS SURVEY :	5.9	/ 5.9
CONSUMER SURVEY :	11.8	/ 11.8
<hr/>		
BASE STRENGTH :	BEARISH	50.00 / 100
SHORT-TERM STRENGTH :	NEUTRAL	29.73%

CANADIAN DOLLAR (C\$) IN GRADUAL RECOVERY, UPSIDE TO BE LIMITED.

Canada Fundamentals Moderate (50.00/100); Recent momentum MILD at 29.73%.

(Fig2.2) Core Inflation (* BOC Concerned Data) seemed to have bottomed.(Fig2.3) Raw Material Price in sustained recovery trend.(Fig2.5) GDP posting recovery in past 2 months.(Fig2.6) Trade balance still weak.(Fig3.2) Domestic Retail sales stale, entering weakness.(Fig3.4) Manufacturing Sales seeing recovery, grew stronger on Sept at 0.60%(Fig3.5) Wholesale sales remained weak.(Fig3.6) Demand of Canadian financial assets also weakening.(Fig4.1) Labour market stable, jobless rate declining.(Fig4.2) Job gains stable, strong.(Fig4.3) Housing price weakened.(Fig4.5) IVY PMI still on general decline, recent spike need more data to validate bottom.

Conclusion: Canadian economy going recovering gradually, but still weak. Domestically, activities remained stale, though growth seemed to be recovering, **September Manufacturing Sales seen recovery at 0.60%, overall trend grew stronger.** Job market stable and strong, house price recently weakened. Business sentiments recently optimistic.

Table 1: Pending Fundamental Events for Canada & Past 15 economic data release.

UPCOMING FUNDAMENTAL EVENTS						
DATE	TIME	DETAILS	FORECAST	PREVIOUS	IMPACT	
20-Nov Wednesday	9:30pm	Wholesale Sales m/m	0.40%	0.50%	!!	
22-Nov Friday	9:30pm	Core CPI m/m	0.00%	0.20%	!!!	
22-Nov Friday	9:30pm	Core Retail Sales m/m	0.40%	0.40%	!!!	
22-Nov Friday	9:30pm	CPI m/m	0.20%	0.20%	!!	
22-Nov Friday	9:30pm	Retail Sales m/m	0.50%	0.20%	!!	
PAST ECONOMIC EVENTS:						
DATE	TIME	DETAILS	ACTUAL	FORECAST	PREVIOUS	
18-Nov Monday	8:30pm	Foreign Securities Purchases	8.36	6.71	2.08	↑
15-Nov Friday	8:30pm	Manufacturing Sales m/m	0.60%	0.50%	0.00%	↑
14-Nov Thursday	8:30pm	Trade Balance	-40.00%	-1.20	-1.10	→
14-Nov Thursday	8:30pm	NHPI m/m	0.00%	0.20%	0.10%	↓
07-Nov Thursday	8:15pm	Housing Starts	198.00	192.00	196.00	→
07-Nov Thursday	8:30pm	Employment Change	13.20	12.70	11.90	↑
07-Nov Thursday	8:30pm	Unemployment Rate	6.90%	7.00%	6.90%	↑
06-Nov Wednesday	8:30pm	Building Permits m/m	1.70%	7.80%	-20.00%	→
06-Nov Wednesday	10:00pm	Ivey PMI	62.80	54.70	51.90	↑
31-Oct Thursday	8:30pm	GDP m/m	0.30%	0.20%	0.60%	↑
29-Oct Tuesday	8:30pm	RMPI m/m	-1.50%	-0.40%	0.90%	↓
29-Oct Tuesday	8:30pm	IPPI m/m	-0.30%	0.20%	0.30%	→
22-Oct Tuesday	8:30pm	Core Retail Sales m/m	0.40%	0.20%	0.80%	→
22-Oct Tuesday	8:30pm	Retail Sales m/m	0.20%	0.30%	0.50%	↓
21-Oct Monday	8:30pm	Wholesale Sales m/m	0.50%	0.60%	1.70%	→

Quantified Fundamental Strengths are consolidated and Paired (i.e: CCY/CCY) to generate Auto-Suggested Trades in **Summary Report**.

Auto-suggested trades are automatically paired on the basis of Strongest Currency Fundamental against Weakest Currency Fundamentals.

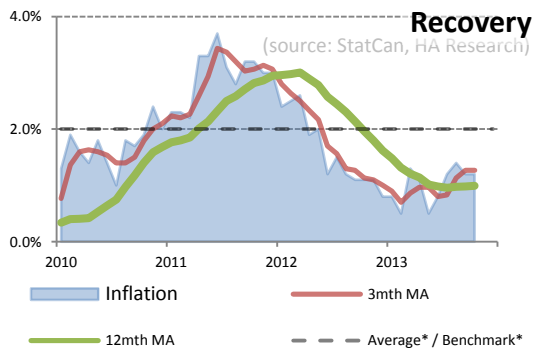
For disclaimer & more information on the calculation methodology, please refer to the back cover of this document.



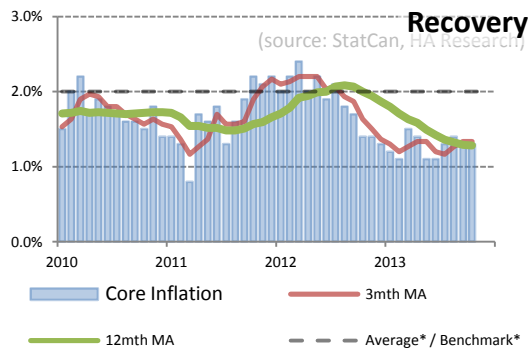
INFLATION INDICATORS



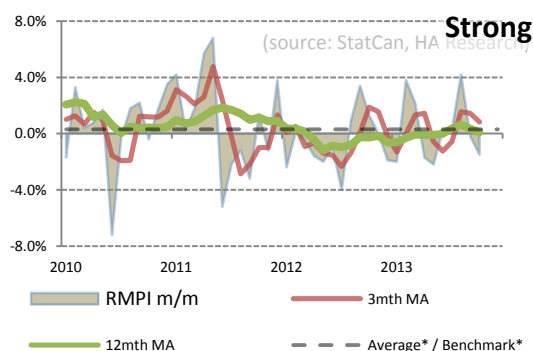
(Fig2.1) Canadian Inflation seemed to have bottomed.



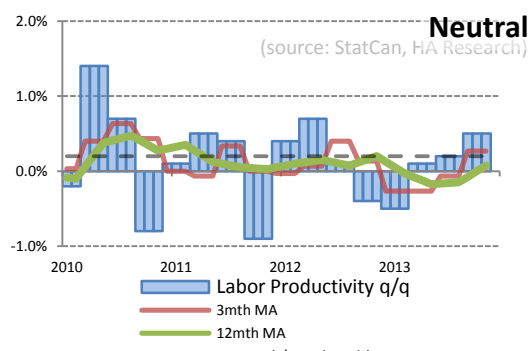
(Fig2.2) Core Inflation (* BOC Concerned Data) seemed to have bottomed.



(Fig2.3) Raw Material Price in sustained recovery trend.

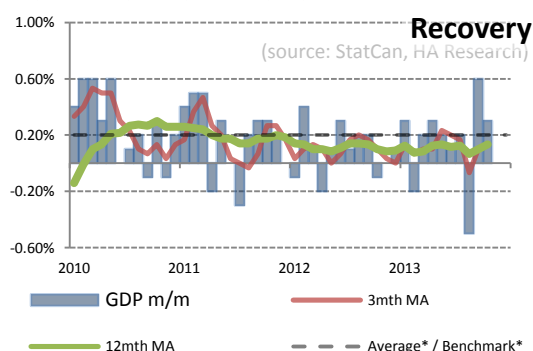


(Fig2.4) Canadian Labour Productivity.

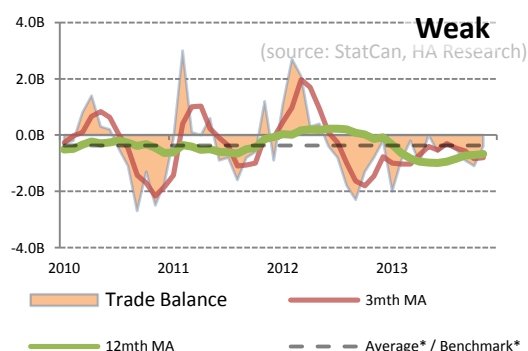


GROWTH INDICATORS

(Fig2.5) GDP posting recovery in past 2 months.



(Fig2.6) Trade balance still weak.

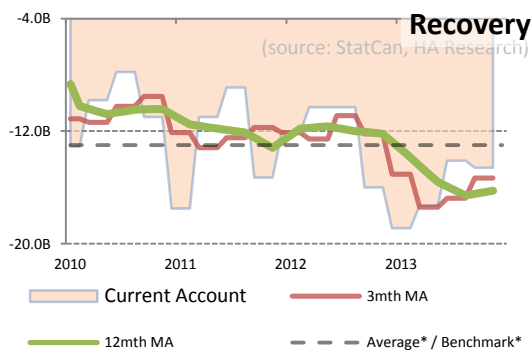


Average* / Benchmark* is a derivation of the following considerations: (1) moving averages across data used in the chart period; (2) Mandated target of Central Bank; (3) Market consensus benchmark; (4) Combination of either.

Figure/Chart annotations All figures/charts provided in this report are annotated in Figure(Page).(Chart #) format. Example Figure2.1 represents: Figure in (Page 2).(Chart 1 in page 2).

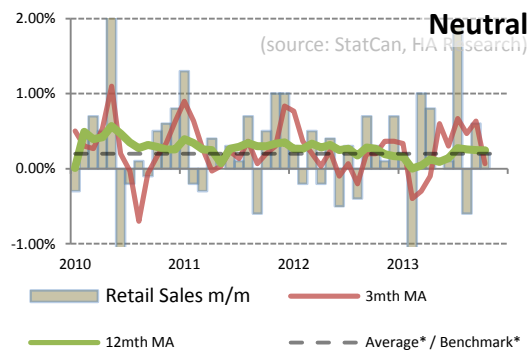


GROWTH INDICATORS (continued)

**(Fig3.1) National accounts in recovery, but weak.**

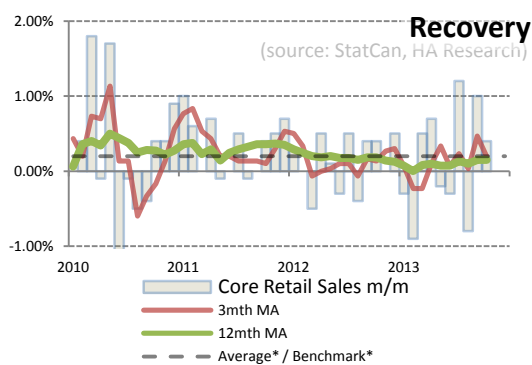
November:	-14.6B	Previous	-14.6B
-----------	---------------	----------	--------

Current Account Difference in \$ btw trade balance, services, investment income, and current transfers during prev quarter;

(Fig3.2) Domestic Retail sales stale, entering weakness.

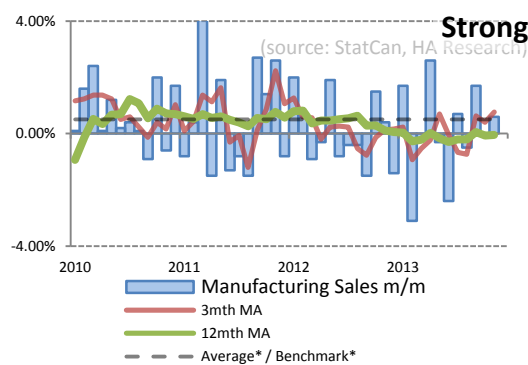
November:	Pending	Previous	0.20%
-----------	----------------	----------	-------

Retail Sales Change in the total value of sales at the retail level;

(Fig3.3) Core retail sales stale.

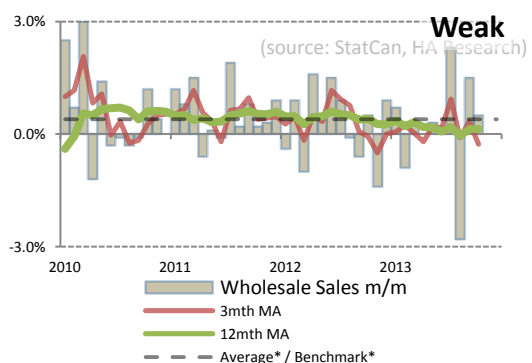
November:	Pending	Previous	0.40%
-----------	----------------	----------	-------

Core Retail Sales Change in the total value of sales at the retail level, excluding automobiles;

(Fig3.4) Manufacturing Sales seeing recovery, grew stronger on Sept at 0.60%

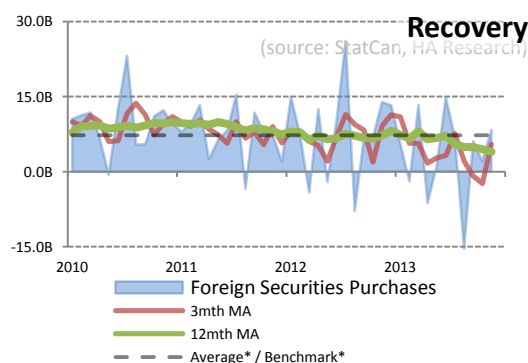
November:	0.60%	Previous	0.00%
-----------	--------------	----------	-------

Manufacturing Sales Change in the total value of sales made by manufacturers;

(Fig3.5) Wholesale sales remained weak.

November:	Pending	Previous	0.50%
-----------	----------------	----------	-------

Wholesale Sales Change in the total value of sales at the wholesale level; retailer orders more if sales expected to increase.

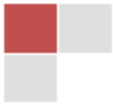
(Fig3.6) Demand of Canadian financial assets also weakening.

November:	8.4B	Previous	2.1B
-----------	-------------	----------	------

FS Purchase Total value of domestic stocks, bonds, and money-market assets purchased by foreigners during the reported month;

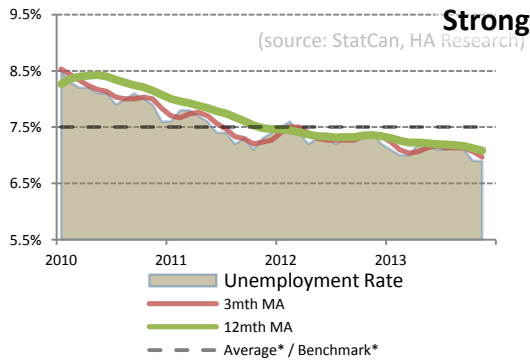
Average* / Benchmark* is a derivation of the following considerations: (1) moving averages across data used in the chart period; (2) Mandated target of Central Bank; (3) Market consensus benchmark; (4) Combination of either.

Figure/Chart annotations All figures/charts provided in this report are annotated in Figure(Page).(Chart #) format. Example Figure2.1 represents: Figure in (Page 2).(Chart 1 in page 2).



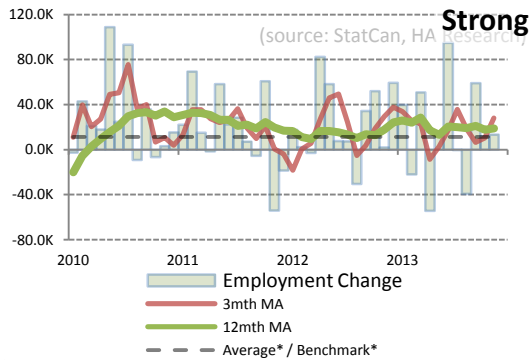
EMPLOYMENT INDICATORS

(Fig4.1) Labour market stable, jobless rate declining.



Jobless Rate % of the total work force that is unemployed and actively seeking employment during the previous month;

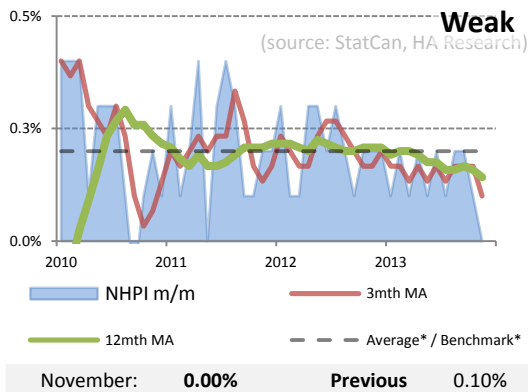
(Fig4.2) Job gains stable, strong.



Employment Change Change in the number of employed people during the previous month;

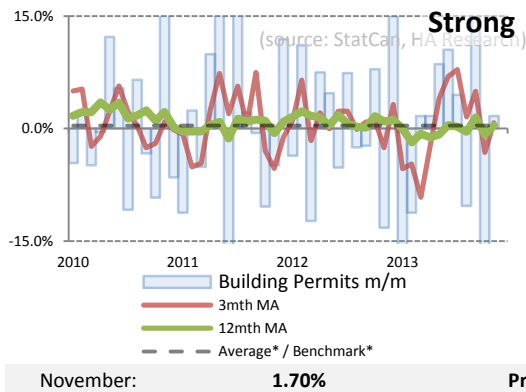
HOUSING INDICATORS

(Fig4.3) Housing price weakened.



New House Price Index Change in the selling price of new homes;

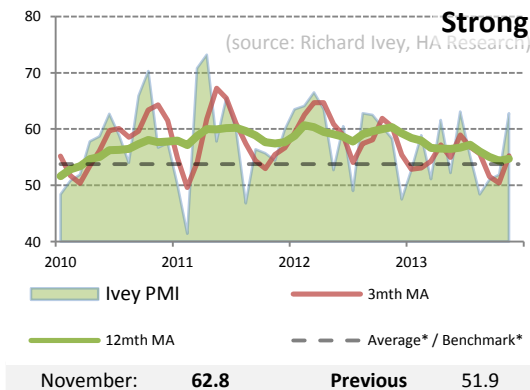
(Fig4.4) Building Permits for new building strong.



Building Permits Change in the total value of new building permits issued;

BUSINESS SURVEY

(Fig4.5) IVY PMI still on general decline, recent spike need more data to validate bottom.



Ivey PMI Survey of 175 purchasing managers to rate business conditions, job, production, orders, prices, inventories;

Average* / Benchmark* is a derivation of the following considerations: (1) moving averages across data used in the chart period; (2) Mandated target of Central Bank; (3) Market consensus benchmark; (4) Combination of either.

Figure/Chart annotations All figures/charts provided in this report are annotated in Figure(Page).(Chart #) format. Example Figure2.1 represents: Figure in (Page 2).(Chart 1 in page 2).



About the Reports.

Fundamental Analysis, though not the only direct determinant of Forex Spot Trading, is still significant and cannot be ignored undeniably. The author believes quantifying fundamentals strength of currency into 1 single index score helps in maintaining the overview of the currency, and therefore enhancing traders' overall trading system consisting of other tools, such as Technical Analysis, Price action or events driven risk movements...etc.

The reports are updated and published on a daily basis, on 8 currencies namely: AUD, NZD, CAD, CNY, EUR, GBP & USD. From which, each individual Quantified Currency Strengths are consolidated into the Summary Report. Further on the basis of pairing Strongest Fundamentals of Currency against Weakest Fundamentals of Currency, auto-suggested trades are then generated based on these allocated fundamental strengths of currency.

DISCLAIMER

THE INFORMATION, SOURCE AND DATA CONTAINED IN THIS DOCUMENT HAS NOT BEEN EXTERNALLY VERIFIED AND NO REPRESENTATION OR WARRANTY EXPRESSED OR IMPLIED IS MADE AS TO, AND NO RELIANCE SHOULD BE PLACED ON, THE FAIRNESS, ACCURACY, COMPLETENESS OR CORRECTNESS OF THIS INFORMATION OR OPINIONS CONTAINED HEREIN.

THIS DOCUMENT DOES NOT CONSTITUTE AN OFFER NOR SHALL IT FORM THE BASIS OF OR BE RELIED UPON IN CONNECTION WITH ANY CONTRACT, TRADE OR COMMITMENT WHATSOEVER. REFERENCE TO DATA IN THIS DOCUMENT ARE PROVIDED "AS IS" WITHOUT WARRANTY OF ANY KIND, EITHER EXPRESS OR IMPLIED. IN NO EVENT SHALL THE AUTHOR (Henry KH ANG) BE LIABLE FOR ANY SPECIAL, INCIDENTAL, INDIRECT OR CONSEQUENTIAL DAMAGES OF ANY KIND, OR ANY DAMAGE WHATSOEVER, INCLUDING, WITHOUT LIMITATION, THOSE RESULTING FROM THE USE OF DATA IN THIS DOCUMENT.

THE INFORMATION PRESENTED IN THIS DOCUMENT IS PUBLISHED SEMI-AUTOMATICALLY AND ITS ACCURACY OR TIMELINESS CANNOT BE GUARANTEED. USER OF THIS DOCUMENTS SHOULD NOT DEPEND ON THIS DOCUMENTS FOR ANY TRADING ADVISE / SIGNAL / DECISION.

CHART & GRAPHICS

THE CHARTS AND GRAPHICS PRESENTED IN THIS DOCUMENT MIGHT BE BEST-FITTED TO SHOWCASE IT'S RECENCY. FOR FULL DATA ACCURACY OR GRAPHICS-SENSITIVE DECISION PERTAINING TO THE RELEVANT CHART, INVESTORS ARE ADVISED TO REFER TO THE OFFICIAL SOURCE OF THE DATA. THE INFORMATION CONTAINED HEREIN DOES NOT SUGGEST OR IMPLY, AND SHOULD NOT BE CONSTRUCTED, IN ANY MANNER, AS A DIRECT OR INDIRECT TRADING SIGNAL OR TRADE CALL. PAST PERFORMANCE DOES NOT INDICATE FUTURE PERFORMANCES.

REFERENCE TO DATA IN THIS DOCUMENT ARE PROVIDED "AS IS" WITHOUT WARRANTY OF ANY KIND, EITHER EXPRESS OR IMPLIED. IN NO EVENT SHALL THE AUTHOR (Henry KH ANG) BE LIABLE FOR ANY SPECIAL, INCIDENTAL, INDIRECT OR CONSEQUENTIAL DAMAGES OF ANY KIND, OR ANY DAMAGE WHATSOEVER, INCLUDING, WITHOUT LIMITATION, THOSE RESULTING FROM THE USE OF DATA IN THIS DOCUMENT.

CALCULATION METHODOLOGY

BASE FUNDAMENTAL STRENGTH, BENCHMARK, SHORT-TERM STRENGTH INDEX (40 DAYS FUNDAMENTAL STRENGTH), CURRENCY DIFFERENTIALS (BASE, CURRENT) AND DERIVATION OF ITS SCORING IS FROM A COMPUTER-GENERATED CALCULATION MODEL. IT TAKES ALLOCATED FUNDAMENTAL DATA AND ITS RELATIVE STRENGTH, AVERAGES AS BASIS. STRENGTH OF FUNDAMENTAL DATA (PAST AND CURRENT) ARE STATISTICALLY ALLOCATED (PRE-DETERMINED BASIS) TO ARRIVE IN THE FORMULATED SCORING.

THE AUTHOR (Henry KH ANG) MAKE NO WARRANTY, EITHER EXPRESSED OR IMPLIED, INCLUDING BUT NOT LIMITED TO, WARRANTIES OF CORRECTNESS AND FITNESS FOR A PARTICULAR PURPOSE IN ALL CALCULATION AND DERIVATION OF SCORING IN THIS DOCUMENT. IN NO EVENT WILL THE AUTHOR (Henry KH ANG) BE LIABLE FOR ANY INDIRECT, SPECIAL, CONSEQUENTIAL, OR OTHER DAMAGES HOWEVER CAUSED.

SOURCES

ALL DATA SOURCES ARE REFERENCE IN THE CHART AND GRAPHICS PRESENTED IN THIS DOCUMENT. THE SOURCES ARE NON-COPYRIGHTED DATA COLLECTIONS. FOR MORE INFORMATION ON THE DATA, USERS ARE ADVISED TO VISIT THE INDIVIDUAL STATISTICAL AGENCIES.